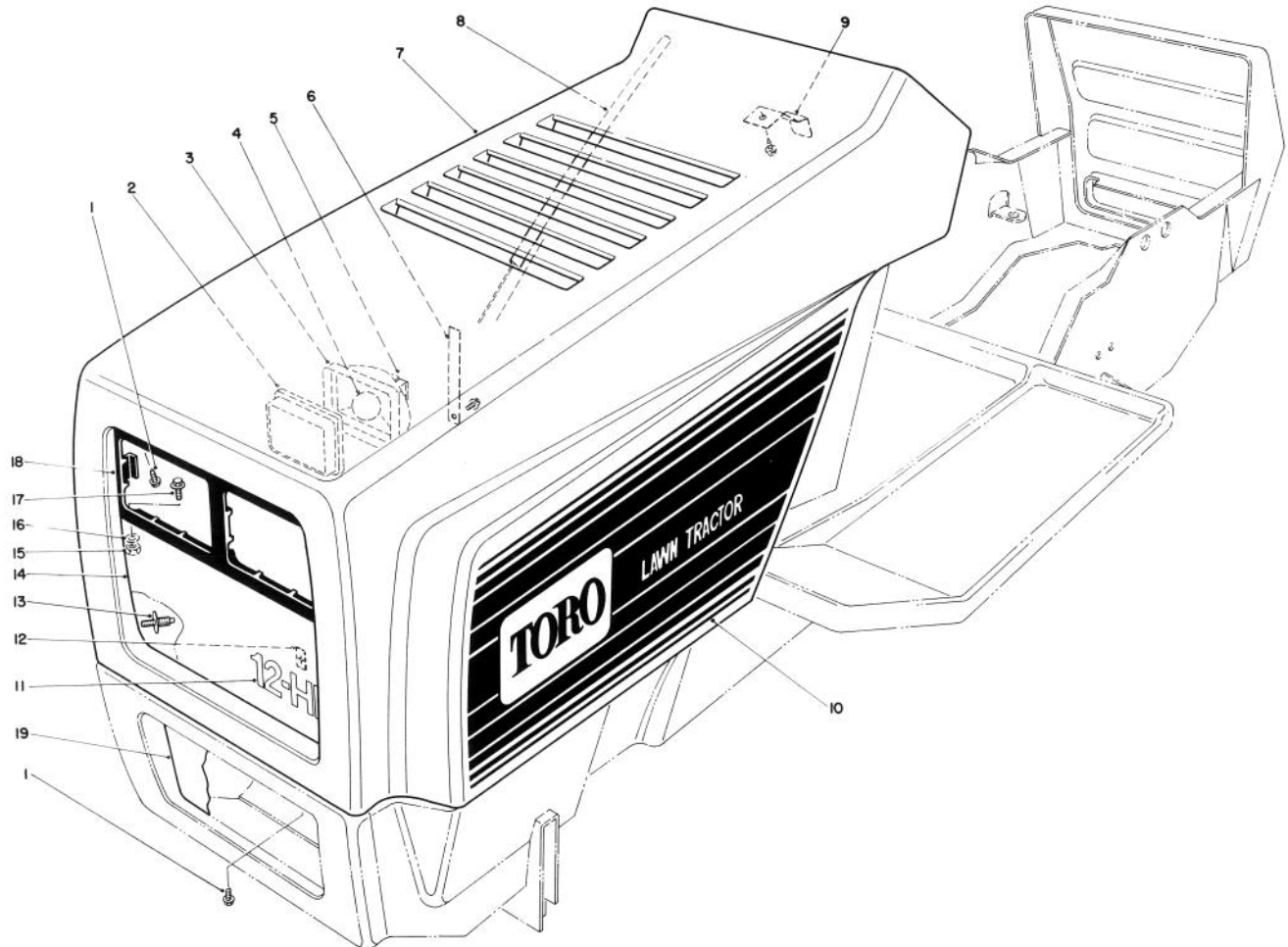




MODEL NO. 57400 — 8000001 & UP  
 MODEL NO. 57410 — 8000001 & UP  
 MODEL NO. 57420 — 8000001 & UP

## PARTS CATALOG

### 12 H.P. ELECTRIC START LAWN TRACTOR

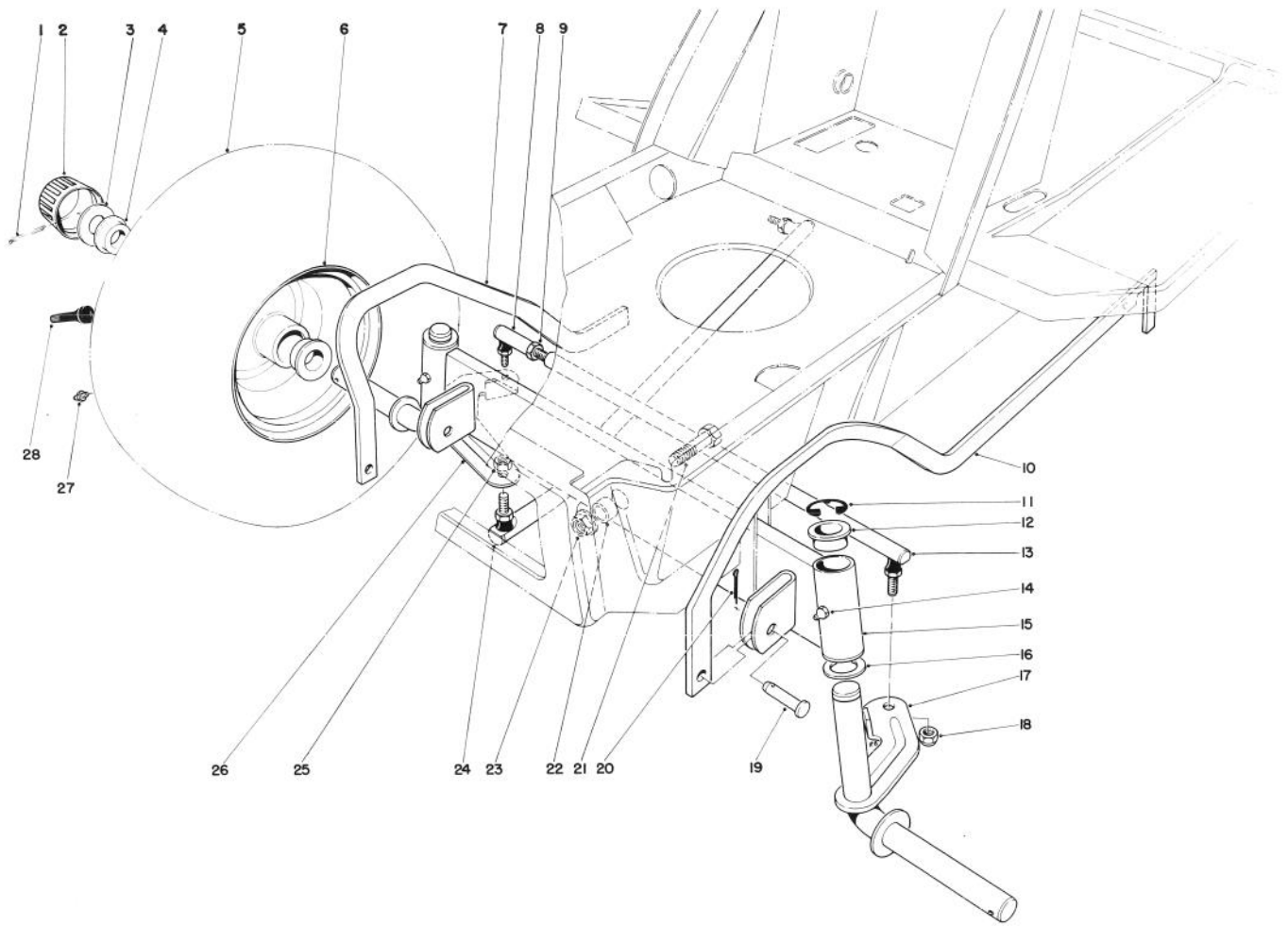


### HOOD ASSEMBLY

Ref. No.	Part No.	Description	No. Used
1	32104-76	Screw — Self Tapping	10
2		Lens	2
3		Reflector	2
4		Bulb	2
5		Socket Assembly	2
6	63-5770	Strap — Headlight	1
7	13-0489	Hood (Incl. Ref. #13)	1
8	28-3810	Seal — Rubber Extrusion	2
9	27-9130	Latch — Spring	1
10	63-5720	Decal — Hood L.H.	1
*	63-5730	Decal — Hood R.H.	1

Ref. No.	Part No.	Description	No. Used
11	63-5580	Plate — Name, Grille	1
12	3290-299	Nut — Tinneman	2
13	27-9120	Stud — Hinge Plate	4
14	36-2090	Grille — Headlight	1
15	32153-1	Nut — Lock	2
16	3256-21	Washer — Plain	2
17	3290-144	Screw — Machine Hex Hd.	2
18	63-5760	Panel — Headlight	1
19	28-0010	Grille — Lower	1
*	63-5590	Headlight Assy. (Incl. Ref. #2-5)	2

\* Not Illustrated

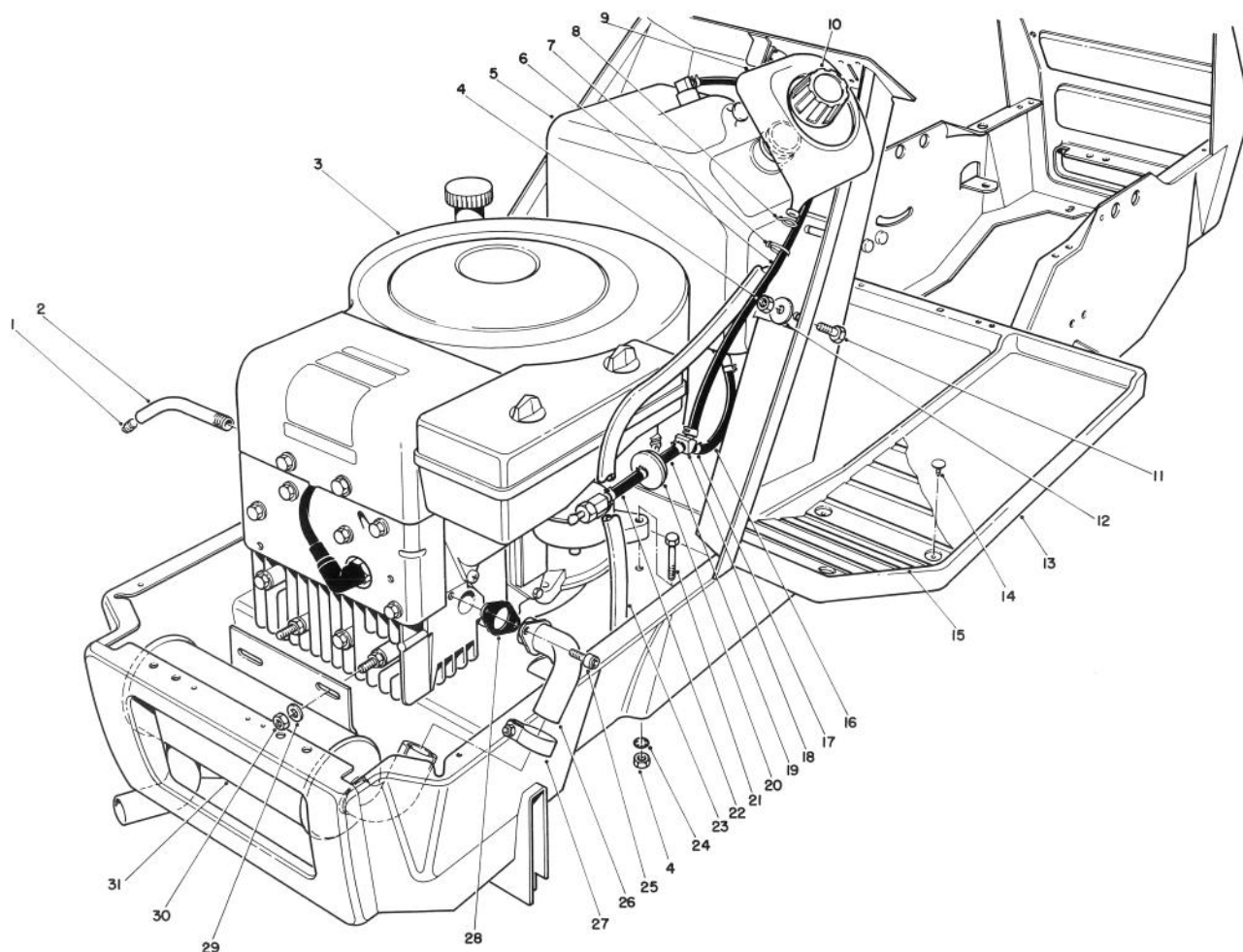


## FRONT AXLE ASSEMBLY

Ref. No.	Part No.	Description	No. Used
1	3272-12	Cotter Pin	2
2	61-9780	Hub Cap	2
3	28-2480	Washer	2
4	251-210	Ball Bearing	4
5	231-94	Tire	2
6	242-60	Rim	2
7	28-0200	Parallel Link R.H.	1
8	2411-32	Ball Joint	1
9	3220-2	Nut — Jam	1
10	28-0210	Parallel Link L.H.	1
11	32151-48	E-Ring	2
12	27-9080	Flange Bearing	4
13	47-5160	Tie Rod Steering (Incl. Ref. #8 & 9)	1
14	302-49	Grease Fitting	2

Ref. No.	Part No.	Description	No. Used
15	36-1500	Front Axle (Incl. Ref. #12)	1
16	3-6498	Thrust Washer	2
17	36-1560	Spindle L.H.	1
18	3296-20	Locknut	2
19	283-2	Clevis Pin	2
20	3272-6	Cotter Pin	2
21	325-6	Capscrew	1
22	28-0380	Spacer Front Axle	1
23	32128-23	Flange Nut	1
24	39-1910	Steering Arm	1
25	3296-5	Locknut	1
26	36-1550	Spindle R.H.	1
27	302-5	Grease Fitting	2
28	232-27	Valve Stem w/Cap	2
*	232-38	Inner Tube (Optional)	2

\* Not Illustrated



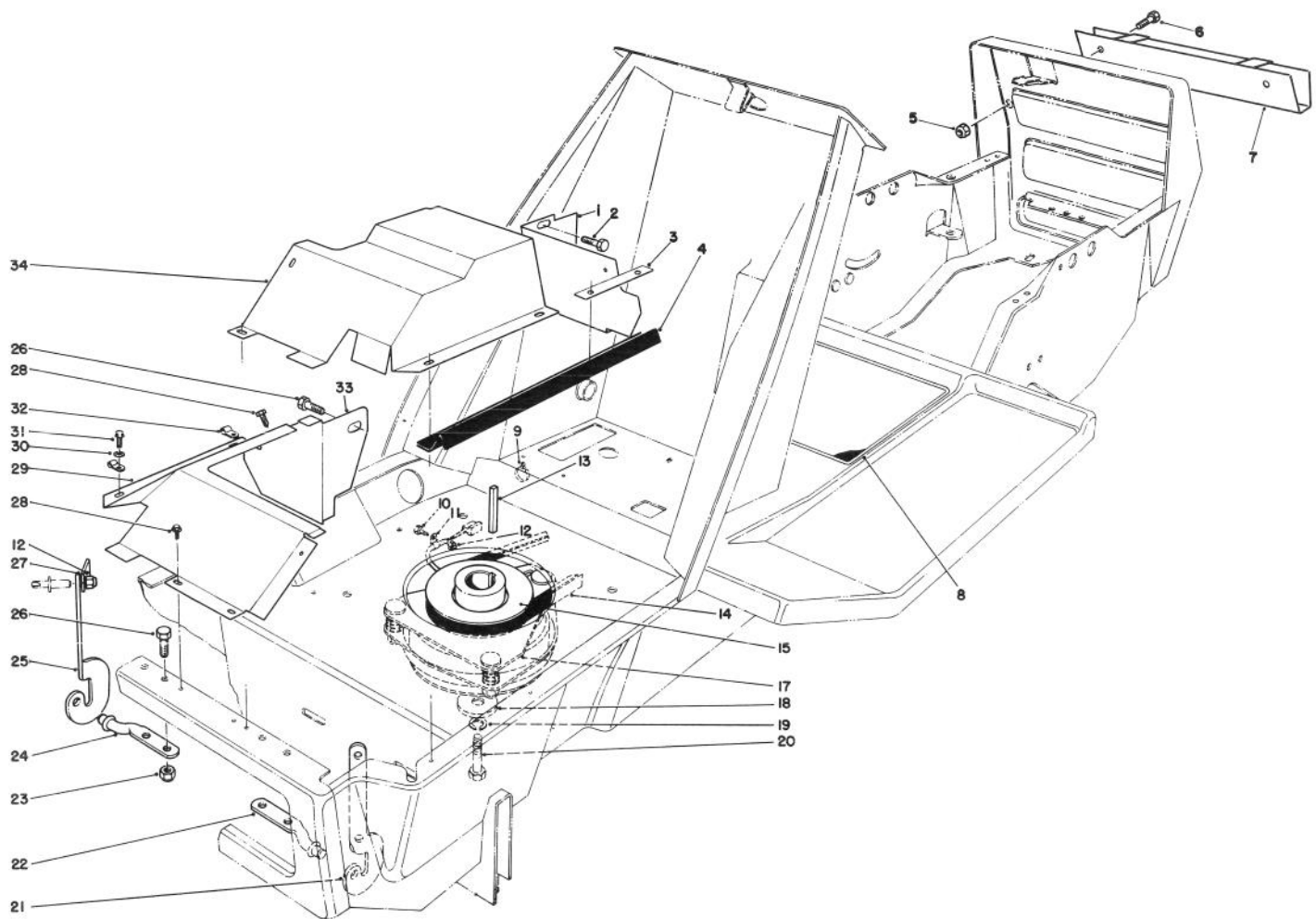
## ENGINE ASSEMBLY

Ref. No.	Part No.	Description	No. Used
1	281-1	Plug — Pipe	1
2	28-8650	Tube — Oil Drain	1
3		Engine	1
4	3296-29	Nut — Lock	8
5	13-0479	Gas Tank Assembly (Incl. Ref. #9, 10)	1
6	47-2981	Hose — Return, Gas	1
7	3290-381	Tie — Cable	1
8	2412-62	Clamp — Hose	1
9		Funnel — Overflow	1
10	55-3570	Gas Cap Assy.	1
11	322-4	Screw — Cap, Hex Hd.	4
12	5-1350	Washer	4
13	66-9210	Frame	1
14	3290-479	Fastener — Panel	12
15	63-5680	Foot Tread L.H.	1
*	63-5690	Foot Tread R.H.	1
16	47-2980	Hose — Gas	1
17	2412-98	Clamp — Hose	6

Ref. No.	Part No.	Description	No. Used
18	353-778	Fitting — Barbed Y	1
19	47-2960	Hose — Gas	1
20†		Filter — Fuel	1
21	322-7	Screw — Cap, Hex Hd.	4
22†		Hose — Gas	1
23	39-4030	Hose — Funnel	1
24	3254-2	Washer — Lock	4
25	3274-53	Screw — Cap, Hex Socket Hd.	2
26	63-5640	Pipe — Exhaust	1
27	23-7760	Clamp — Pipe, Exhaust	1
28†		Gasket — Exhaust	1
29	3256-23	Washer — Plain	2
30	32152-1	Nut — Lock	2
31	63-5650	Muffler	1
*	3290-378	Tie — Cable	2
*	63-5660	Muffler — Spark Arrester (Optional)	1
*	13-0429	Loose Parts	1

\* Not Illustrated

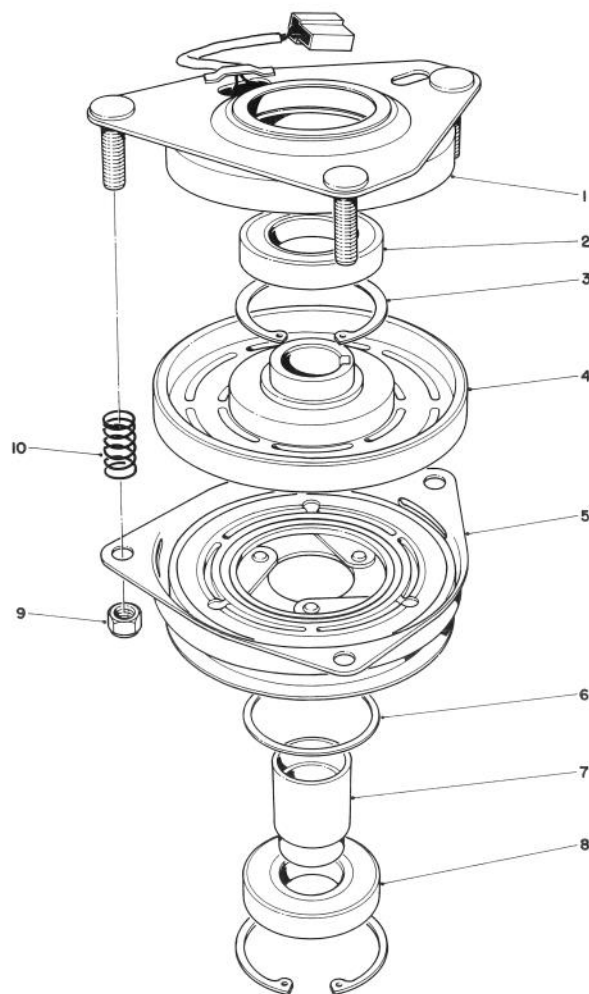
† Obtain from local Briggs & Stratton Dealer.



## CLUTCH & PULLEY ASSEMBLY

Ref. No.	Part No.	Description	No. Used
1	63-5450	Support — Exhaust Shield	1
2	321-3	Capscrew	1
3	63-5930	Strap — Hood Seal	2
4	63-5940	Seal — Lower Hood	2
5	3296-29	Locknut	2
6	322-3	Capscrew	2
7	61-9730	Adapter — Channel	1
8	54-9230	Decal — Operation	1
9	3290-410	Push Mount Tie	1
10	321-4	Capscrew	1
11	2412-66	Clamp	1
12	3296-42	Locknut	5
13	5-1336	Square Key	1
14	28-2650	V-Belt — Traction	1
15	44-5940	Pulley — Ground Drive	1
17	44-0770	Clutch Assembly — Deck	1
18	44-8160	Washer	1

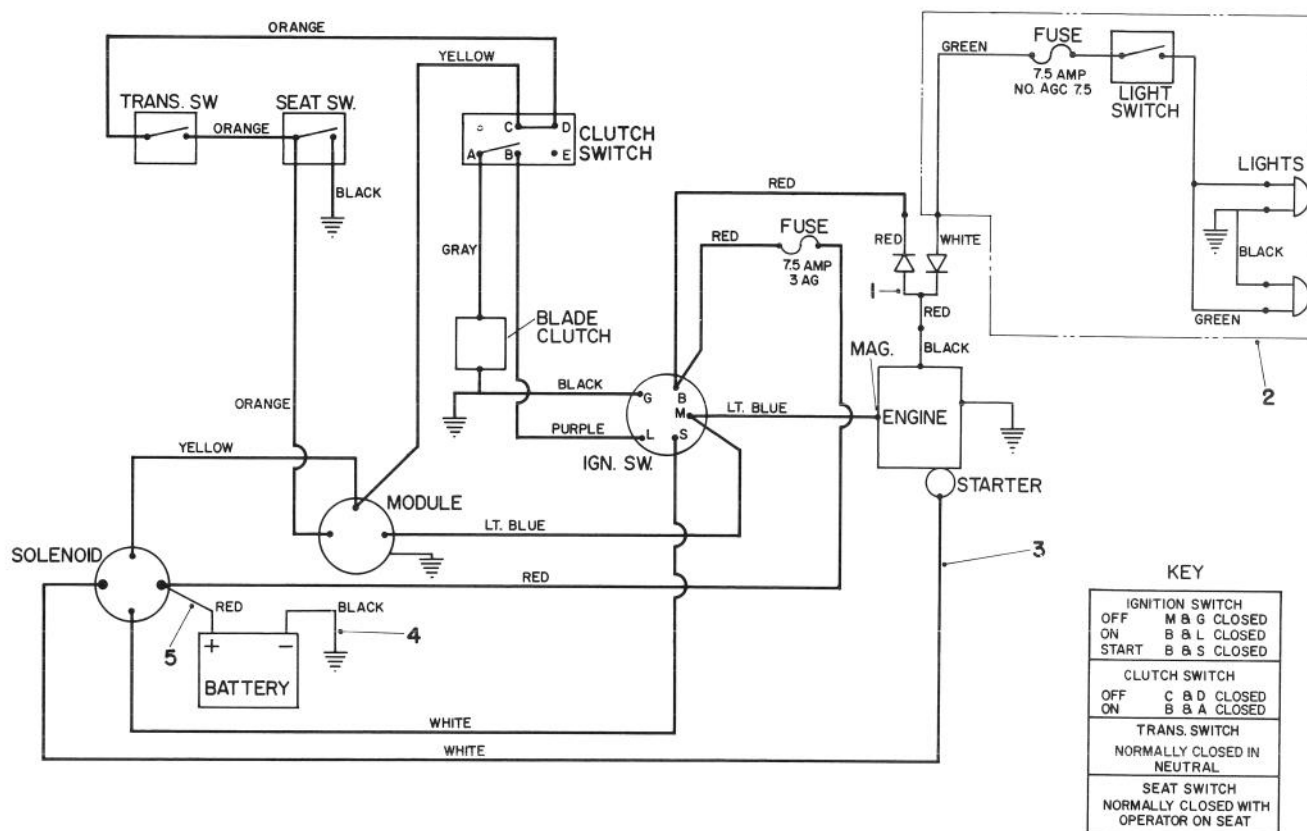
Ref. No.	Part No.	Description	No. Used
19	3253-22	Lockwasher	1
20	3212-24	Capscrew	1
21	28-0120	Bracket — Hinge L.H.	1
22	28-0110	Hinge Pin — Hood L.H.	1
23	32152-1	Locknut	4
24	28-0100	Hinge Pin — Hood R.H.	1
25	28-0130	Bracket — Hinge R.H.	1
26	322-2	Capscrew	5
27	37-0170	Bracket — Screen Support	2
28	32104-76	Screw — Self Tapping	10
29	63-5470	Heat Shield	1
30	3256-14	Washer — Flat	2
31	33-2270	Screw — Self Tapping	2
32	2412-51	Clamp	2
33	63-5460	Support — Heat Shield	1
34	63-5480	Heat Shield	1



## CLUTCH ASSEMBLY NO. 44-0770

Ref. No.	Part No.	Description	No. Used
1	44-8350	Field Assembly (Incl. Ref. #2 & 3)	1
2	251-292	Bearing — Field	1
3	44-8310	Retaining Ring	2
4	44-8360	Field Coil, Rotor & Bearing Assembly (Incl. Ref. #1)	1

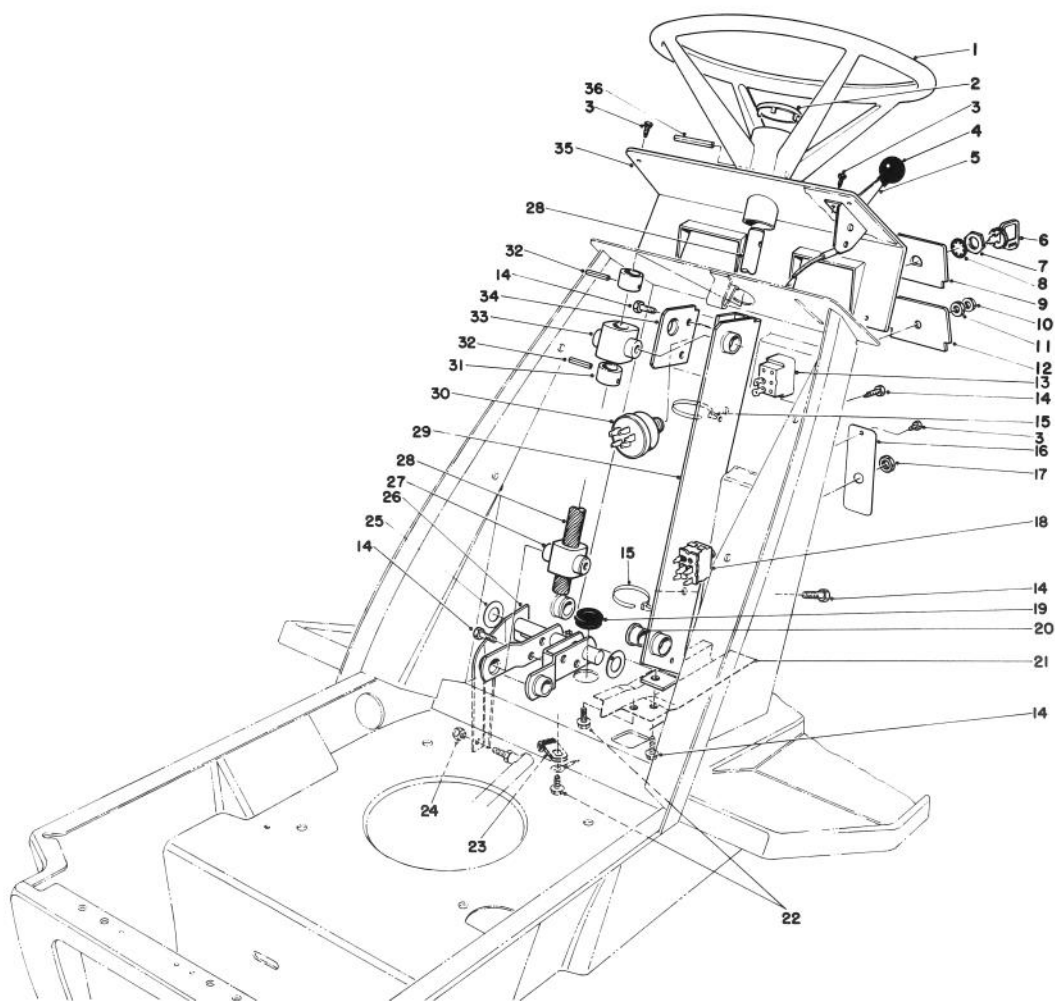
Ref. No.	Part No.	Description	No. Used
5	44-8370	Armature & Pulley Assembly (Incl. Ref. #3, 6, 7 & 8)	1
6	44-8330	Spacer — Pulley Bearing	1
7	44-8340	Bearing Collar	1
8	251-291	Bearing — Pulley	1
9	3296-6	Locknut	3
10	44-8320	Spring	3



## ELECTRICAL DIAGRAM

Ref. No.	Part No.	Description	No. Used
1	44-0750	Wire Harness — Diode	1
2	63-5790	Wire Harness — Lights	1
3	67-5790	Wire Harness	1

Ref. No.	Part No.	Description	No. Used
4	44-8110	Wire Assembly (Battery to Ground)	1
5	28-3890	Wire Assembly (Battery to Solenoid)	1

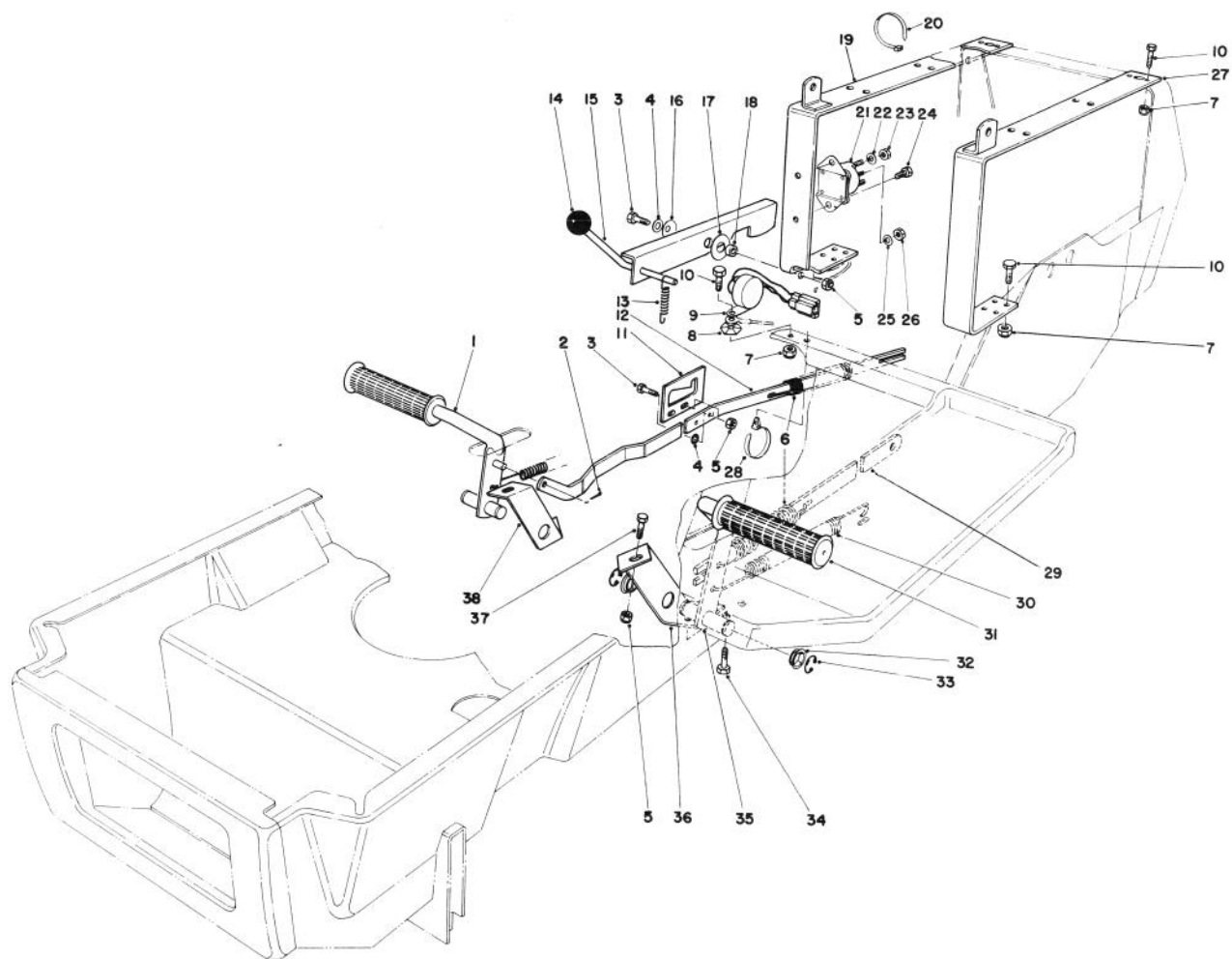


## STEERING WHEEL & DASH ASSEMBLY

Ref. No.	Part No.	Description	No. Used
1	49-3240	Steering Wheel Assembly (Incl. Ref. #2)	1
2	47-2070	Insert — Steering Wheel	1
3	32104-76	Screw — Self Tapping	8
4	233-25	Knob	1
5	38-0990	Throttle Control (Incl. Ref. #4)	1
6	63-8360	Key	2
7	218-461	Nut	1
8	3254-5	Lockwasher	1
9	28-2690	Insert — Dash Panel (Ignition)	1
10	218-497	Beveled Facenut	1
11	218-498	Locknut	1
12	28-2510	Insert — Dash Panel	1
13	28-4110	Light Switch (Incl. Ref. #10 & 11)	1
14	32144-11	Self Tapping Screw	7
15	3290-378	Cable Tie (Incl. w/Wire Harness)	3
16	44-5710	Plate — Clutch Switch	1
17	218-500	Nut	1

Ref. No.	Part No.	Description	No. Used
18	37-2610	Switch — Clutch (Incl. Ref. #17)	1
19	237-100	Grommet (Incl. w/Wire Harness)	1
20	27-9080	Flange Bearing	2
21	36-1570	Shield Wire Harness	1
22	12-3270	Screw — Special	2
23	18-2970	Clamp	1
24	3296-5	Locknut	1
25	11-6240	Washer	2
26	36-3470	Steering Link	1
27	37-0140	Follower — Steering Shaft	1
28	38-5310	Shaft — Steering	1
29	36-2040	Bracket Steering	1
30	23-0660	Ignition Switch (Incl. Ref. #6-8)	1
31	28-3940	Collar — Steering Shaft	2
32	32121-31	Roll Pin	2
33	37-0150	Bearing — Steering Shaft	1
34	28-0390	Bearing Support — Steering	1
35	28-2460	Panel — Dash	1
36	32121-78	Roll Pin	1



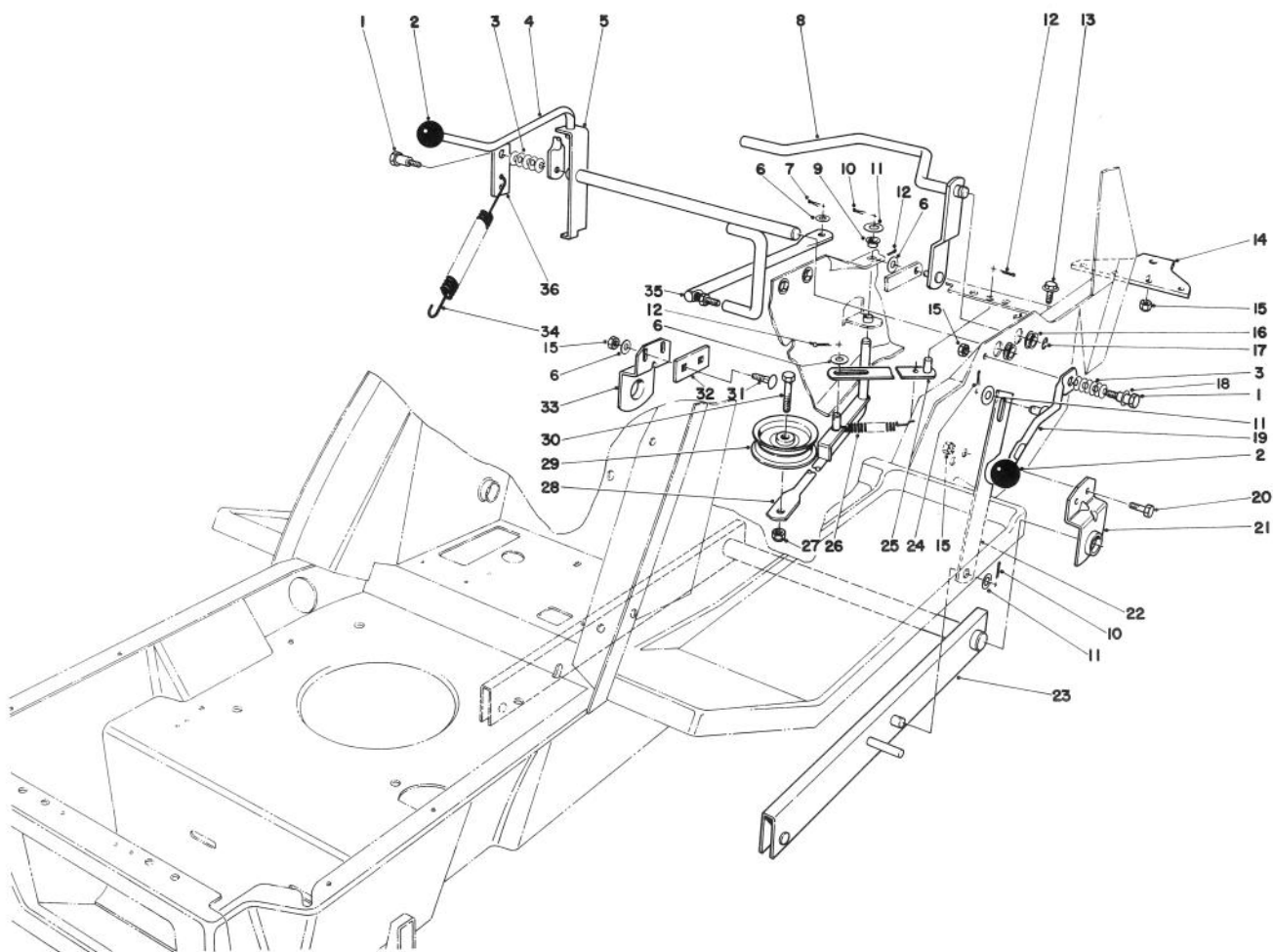


## BRAKE & CLUTCH PEDAL ASSEMBLY

Ref. No.	Part No.	Description	No. Used
1	28-2530	Brake Pedal	1
2	3272-10	Cotter Pin	1
3	322-4	Capscrew	3
4	3256-23	Washer	3
5	3296-29	Locknut	5
6	27-8950	Spring — Extension	2
7	3296-42	Locknut	9
8	3290-257	Pyramidal Washer	1
9	28-7890	Module — Interlock	1
10	321-4	Capscrew	9
11	28-9370	Latch Plate — Brake Rod	1
12	28-9350	Link — Brake Rod	1
13	8-9900	Spring — Control Rod	1
14	233-42	Knob	1
15	28-2570	Parking Brake Lever	1
16	3290-413	Belleville Washer	1
17	28-2450	Washer	1
18	28-2440	Spacer	1
19	38-0940	Strap — Rear Body R.H.	1

Ref. No.	Part No.	Description	No. Used
20	3290-378	Cable Tie	1
21	28-4210	Solenoid	1
22	3253-4	Lockwasher	2
23	3218-13	Nut	2
24	12-3270	Screw — Special	2
25	3253-17	Lockwasher	2
26	3219-14	Nut	2
27	38-0950	Strap — Rear Body L.H.	1
28	3290-410	Pushmount Tie	1
29	28-0430	Link Clutch Rod	1
30	27-8890	Spring — Return	2
31	28-2470	Pad — Foot	2
32	256-258	Nyliner	4
33	32120-19	E-Ring	4
34	32144-11	Self Tapping Screw	4
35	28-2520	Clutch Pedal	1
36	28-0420	Support Pedal	1
37	322-3	Capscrew	2
38	28-0410	Support Pedal R.H.	1

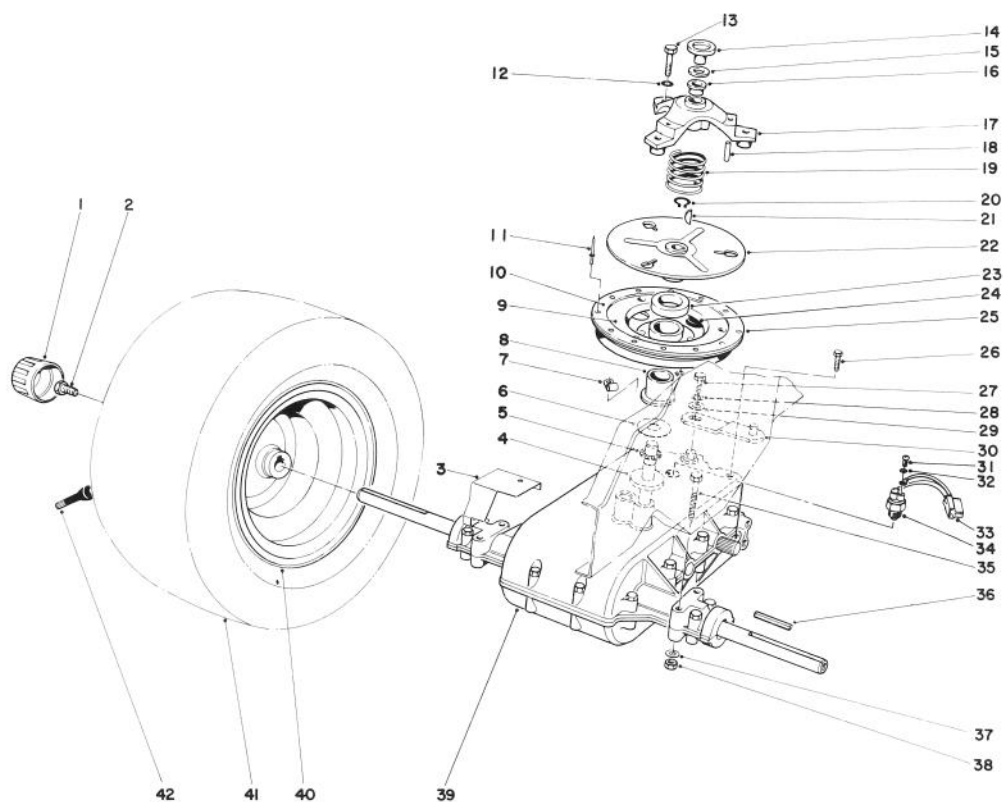




## SHIFT & CLUTCH ASSEMBLY

Ref. No.	Part No.	Description	No. Used
1	28-0540	Shoulder Bolt	2
2	233-48	Knob	2
3	3290-413	Belleville Washer	11
4	28-2190	Shift Lever	1
5	28-2590	Shift Lever	1
6	3256-23	Washer	5
7	3272-6	Cotter Pin	1
8	27-9090	Clutch Actuator	1
9	256-257	Flanged Nyliner	2
10	3272-11	Cotter Pin	2
11	3256-26	Washer	3
12	3272-10	Cotter Pin	3
13	3234-5	Hex Flange Capscrew	4
14	28-2250	Plate — Hitch	1
15	3296-29	Locknut	9
16	256-258	Nyliner	4
17	32120-19	E-Ring	2
18	3256-25	Washer	1
19	28-2180	Height-of-Cut Handle	1
20	322-3	Capscrew	2

Ref. No.	Part No.	Description	No. Used
21	28-4050	Retainer — Pivot Bar L.H.	1
22	28-0400	Strap Height-of-Cut (Model 57400 & 57420)	1
22	57-4730	Strap Height-of-Cut (Model 57410)	1
23	27-9180	Pivot Bar	1
24	3272-7	Cotter Pin	1
25	28-2270	Spring Retainer	1
26	28-2340	Spring — Deck Tension	1
27	32152-2	Locknut	1
28	28-0500	Idler Arm	1
29	36-1020	Idler Pulley	1
30	323-10	Capscrew	1
31	3230-2	Carriage Bolt	2
32	38-6610	Spacer	1
33	28-4060	Retainer — Pivot Bar R.H.	1
34	27-8960	Spring — Deck Engagement	1
35	28-2210	Shift Arm	1
36	28-9400	Bracket — Counter Balance Spring	1

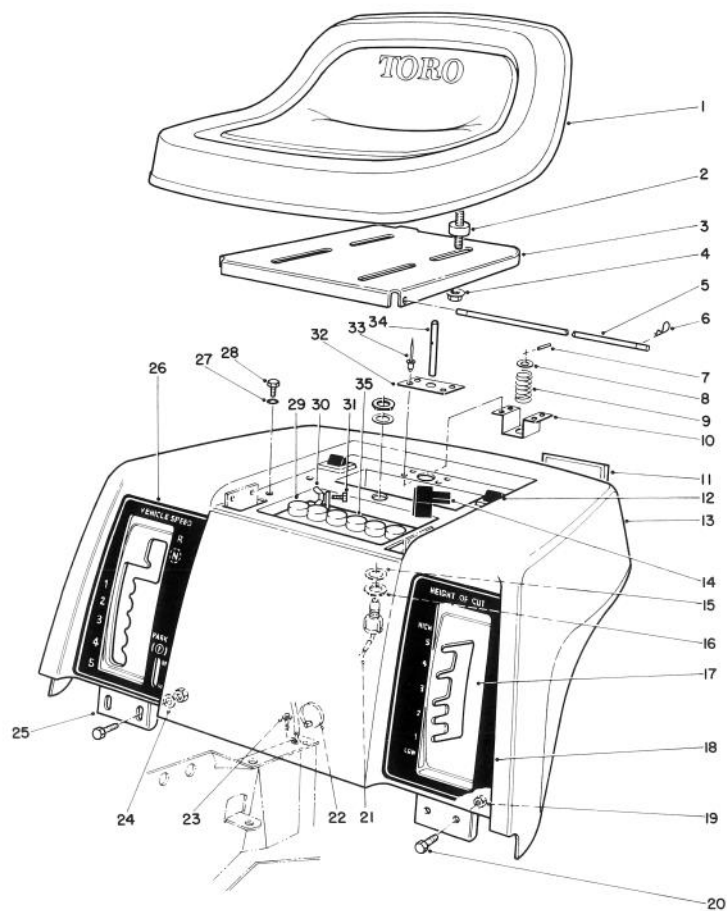


## TRANSAXLE & CLUTCH ASSEMBLY

Ref. No.	Part No.	Description	No. Used
1	61-9780	Hub Cap	2
2	36-4030	Hex Hd. Capscrew	2
3	29-6940	Shield — Grass	1
4	39-4770	Spacer	1
5	252-58	Bearing — Thrust	1
6	27-8820	Washer — Thrust	1
7	18-2970	Clamp (Incl. with Main Wire Harness)	1
8		Bushing	1
9	27-8800	Pad — Clutch	1
10	40-4630	Ring — Retainer	1
11	60-9220	Rivet	12
12	3254-8	Lockwasher	3
13	321-5	Hex Hd. Capscrew	3
14	36-2130	Cap — Clutch	1
15	252-94	Race — Thrust	1
16	256-259	Bushing	1
17	28-2560	Clutch Cover Assembly (Incl. Ref. #16 & 18)	1
18	252-92	Needle — Roller	3
19	36-2220	Spring — Compression	1
20	32120-64	Ring — Retaining	1
21	3257-30	Key	1
22	27-9030	Plate — Clutch	1

Ref. No.	Part No.	Description	No. Used
23	28-4220	Washer — Felt	1
24	2410-40	Plug	3
25	11-0119	Sheave Assembly (Incl. Ref. #8-11)	1
26	32144-11	Self Tapping Screw	2
27	329-2	Hex Hd. Capscrew	1
28	3253-3	Lockwasher	1
29	3256-22	Washer	1
30	28-2380	Bracket — Shift	1
31	3250-28	Screw — Rd. Head	2
32	3254-10	Lockwasher	2
33	52-1970	Wire Harness — Transaxle Switch	1
34	49-8300	Switch — Neutral	1
35	322-12	Hex Hd. Capscrew	4
36	6-8590	Key — Hi Pro	2
37	3256-23	Washer	4
38	3296-29	Locknut	4
39	52-1750	Transaxle	1
40	47-5130	Rim	2
41	231-106	Tire	2
42	232-27	Valve Stem & Cap	2
*	231-91	Inner Tube (Optional)	2

\* Not Illustrated

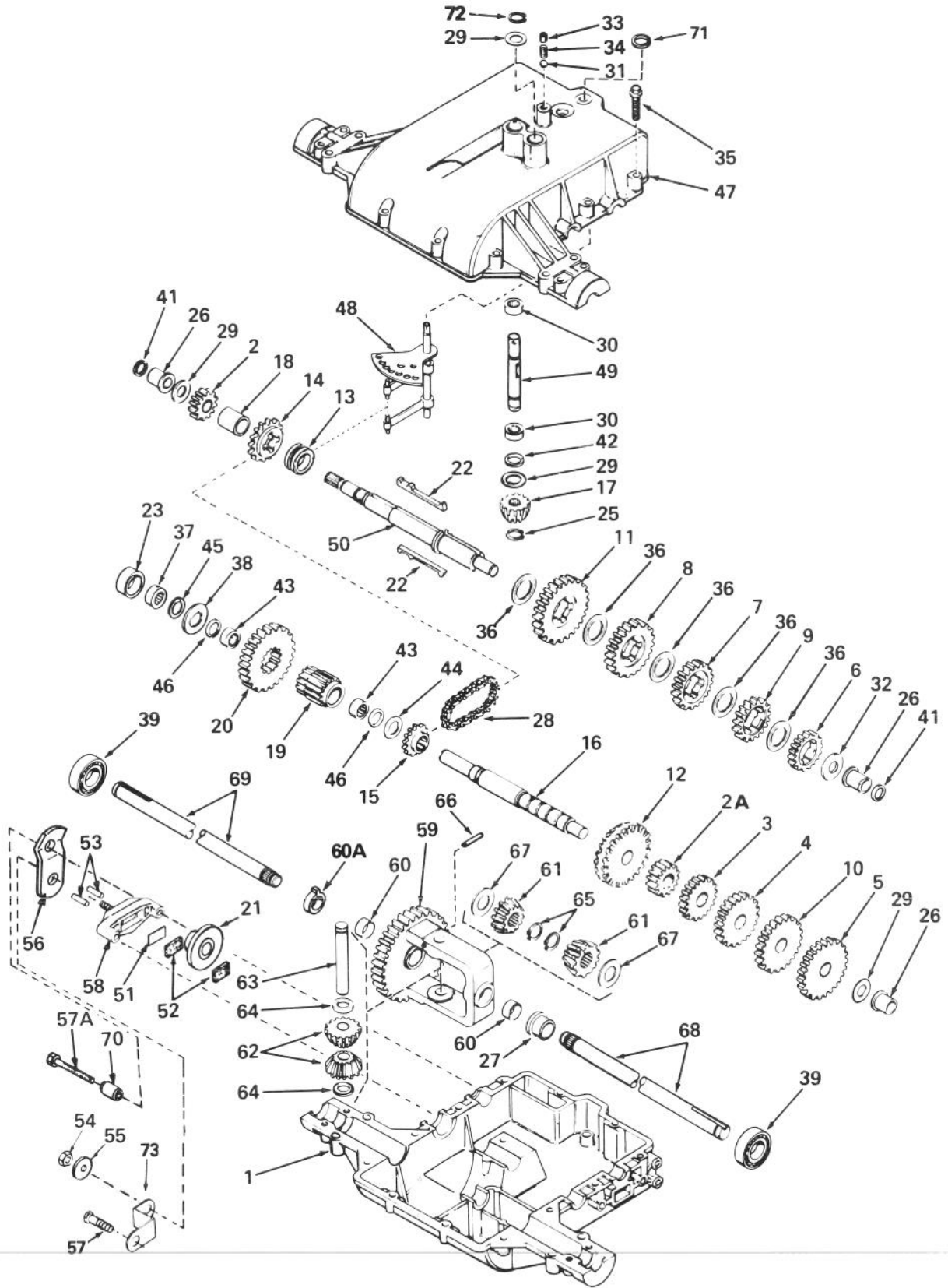


## REAR BODY & SEAT ASSEMBLY

Ref. No.	Part No.	Description	No. Used
1	38-0840	Seat	1
2	62-5480	Isolator — Seat	4
3	36-1490	Support — Seat	1
4	32128-20	Locknut — Hex, Flange	4
5	28-2400	Rod — Pivot, Seat	1
6	3290-307	Pin — Hair, Cotter	2
7	32121-50	Pin — Roll	1
8	3256-4	Washer — Plain	1
9	66-7090	Spring — Compression	1
10	66-7070	Bracket — Spring	1
11	218-491	Reflector	2
12	28-9440	Bumper — Seat	2
13	13-0499	Body — Rear Assy. (Incl. Ref. #18 & 26)	1
14	28-8080	Boot — Battery	1
15	3256-69	Washer — Plain	2
16	218-461	Nut — Hex	2
17	44-5730	Quadrant — Height of Cut	1

Ref. No.	Part No.	Description	No. Used
18	63-5710	Decal — Height of Cut	1
19	3296-29	Locknut	4
20	322-3	Screw — Cap, Hex Hd.	4
21	56-7640	Switch — Seat (Incl. Ref. #16)	1
22	3290-378	Tie — Cable	2
23	32104-76	Screw — Self Tapping	1
24	3256-23	Washer — Plain	2
25	28-0370	Plate — Detent	1
26	63-5700	Decal — Transmission	1
27	5-1350	Washer	4
28	32144-11	Screw — Hex Hd. Self-Tapping	4
29	49-7030	Battery	1
30	32103-22	Nut — Wing	2
31	321-3	Screw — Cap, Hex Hd.	2
32	66-7080	Plate — Retainer	1
33	3290-282	Rivet — Pop	4
34	66-7060	Rod — Plunger	1
35	218-577	Cap — Battery	6

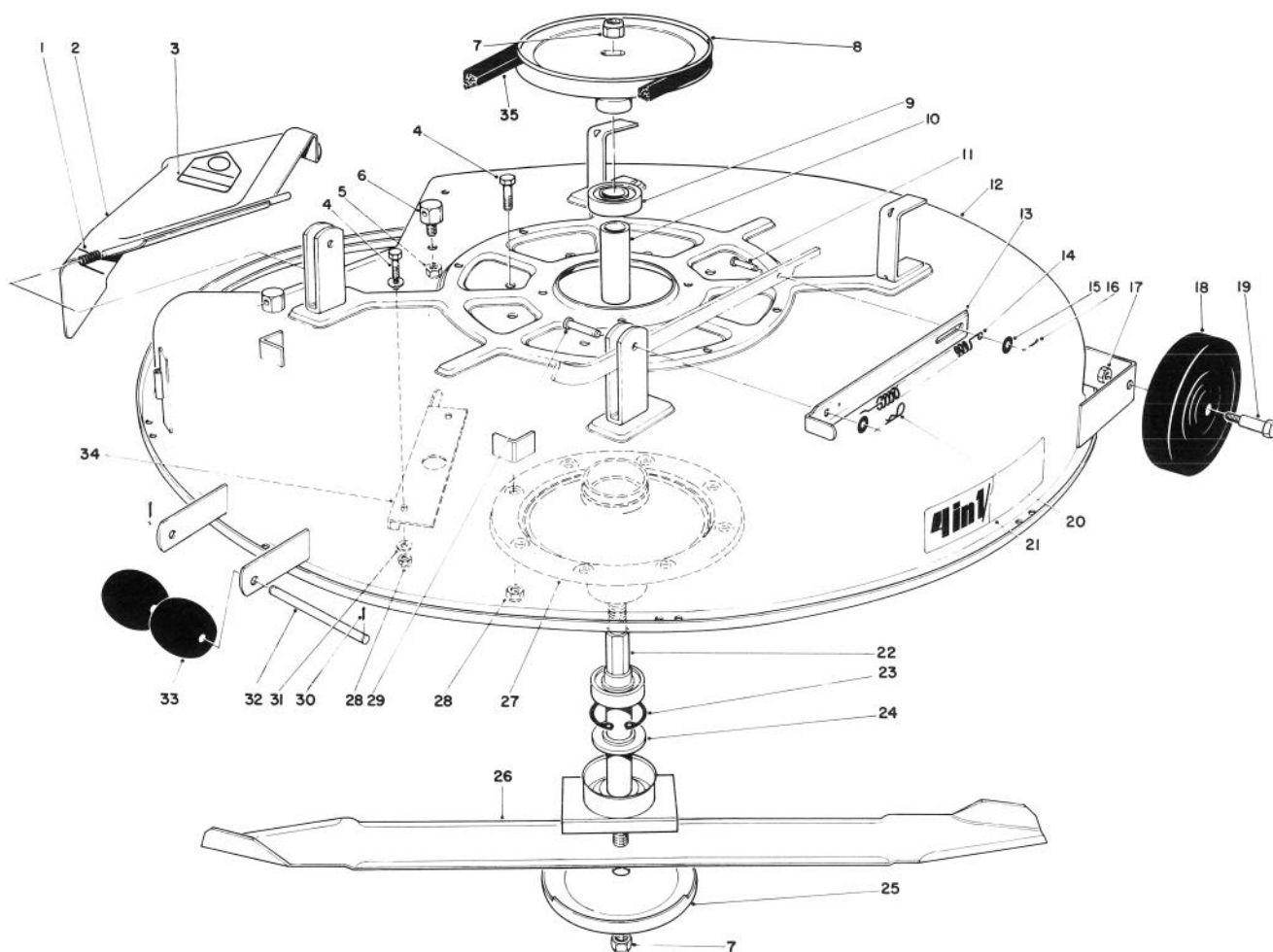
# PEERLESS TRANSAXLE MODEL NO. 801F



# PEERLESS TRANSAXLE MODEL NO. 801F

Ref. No.	Part No.	Description	No. Used
1	770071A	Case — Transaxle	1
2	778136	Gear — Spur (15 teeth)	1
2A	778145	Gear — Spur (12 teeth)	1
3	778126A	Gear — Spur (20 teeth)	1
4	778127A	Gear — Spur (25 teeth)	1
5	778129A	Gear — Spur (30 teeth)	1
6	778121A	Gear — Spur (20 teeth)	1
7	778123A	Gear — Spur (25 teeth)	1
8	778124A	Gear — Spur (30 teeth)	1
9	778122A	Gear — Spur (22 teeth)	1
10	778128A	Gear — Spur (28 teeth)	1
11	778146A	Gear — Spur (37 teeth)	1
12	778137A	Gear — Bevel (42 teeth)	1
13	784266	Collar — Shift	1
14	786083	Sprocket (18 teeth)	1
15	786082	Sprocket (9 teeth)	1
16	776181	Shaft — Counter	1
17	778113A	Bevel Pinion — Input	1
18	786074	Spacer	1
19	778138	Pinion — Output	1
20	778139	Gear — Output	1
21	790003	Disk — Brake	1
22	792089A	Key	1
23	786075	Spacer	1
25	788040	Ring — Retaining	1
26	780105A	Bushing — Flanged	1
27	780118A	Bushing — Flanged	1
28	786081	Chain — Roller (No. 41 chain, 24 links)	2
29	780072	Washer — Thrust	1
30	780086	Bearing — Needle	1
31	792077	Ball — Steel	1
32	780109	Washer — Thrust	1
33	792078	Screw — Set	1
34	792079	Spring	1
35	792073	Screw — Flanged Hex Hd. Thread Forming	2
36	780108	Washer — Thrust	1
37	780111	Bearing — Needle	1
38	780113	Washer — Flat	1

Ref. No.	Part No.	Description	No. Used
39	780119	Bearing — Ball	1
41	788051	Seal — Square Cut	1
42	792001	“O” Ring	1
43	780112	Bearing — Needle	1
44	780114	Washer — Flat	1
45	788052	Seal — Square Cut	1
46	788053	Seal — Square Cut	1
47	772078A	Cover — Transaxle	1
48	784290	Rod & Fork Assy. — Shift	1
49	776182A	Shaft — Input	1
50	776183A	Shaft — Brake	1
51	790007	Plate — Brake Pad	1
52	790006	Pad — Brake	1
53	786026	Pin — Dowel	1
54	792075	Locknut	1
55	792076	Washer — Flat	1
56	790022	Lever — Brake	1
57	792073	Screw — Flanged Hex Hd. Thread Forming	2
57A	792085	Screw — Flanged Hex Hd. Thread Forming	2
58	790020	Holder — Brake Pad	1
59	778053A	Gear Assy. — Differential (Incl. 2 of Ref. #60)	1
60	780064	Bushing	1
60A	780120	Bushing	1
61	778221	Gear — Bevel	1
62	778068	Pinion — Bevel	1
63	786034	Pin — Drive	1
64	780065	Washer — Thrust	1
65	792018	Ring — Retaining	1
66	792040	Pin — Roll	1
67	780001	Washer — Thrust	1
68	774718	Axle (14-7/8" long)	1
69	774717	Axle (13" long)	1
70	786067	Spacer	1
71	788069	Seal — Square Cut	1
72	792035	Ring — Retaining	1
73	786109	Bracket — Brake Lever	1

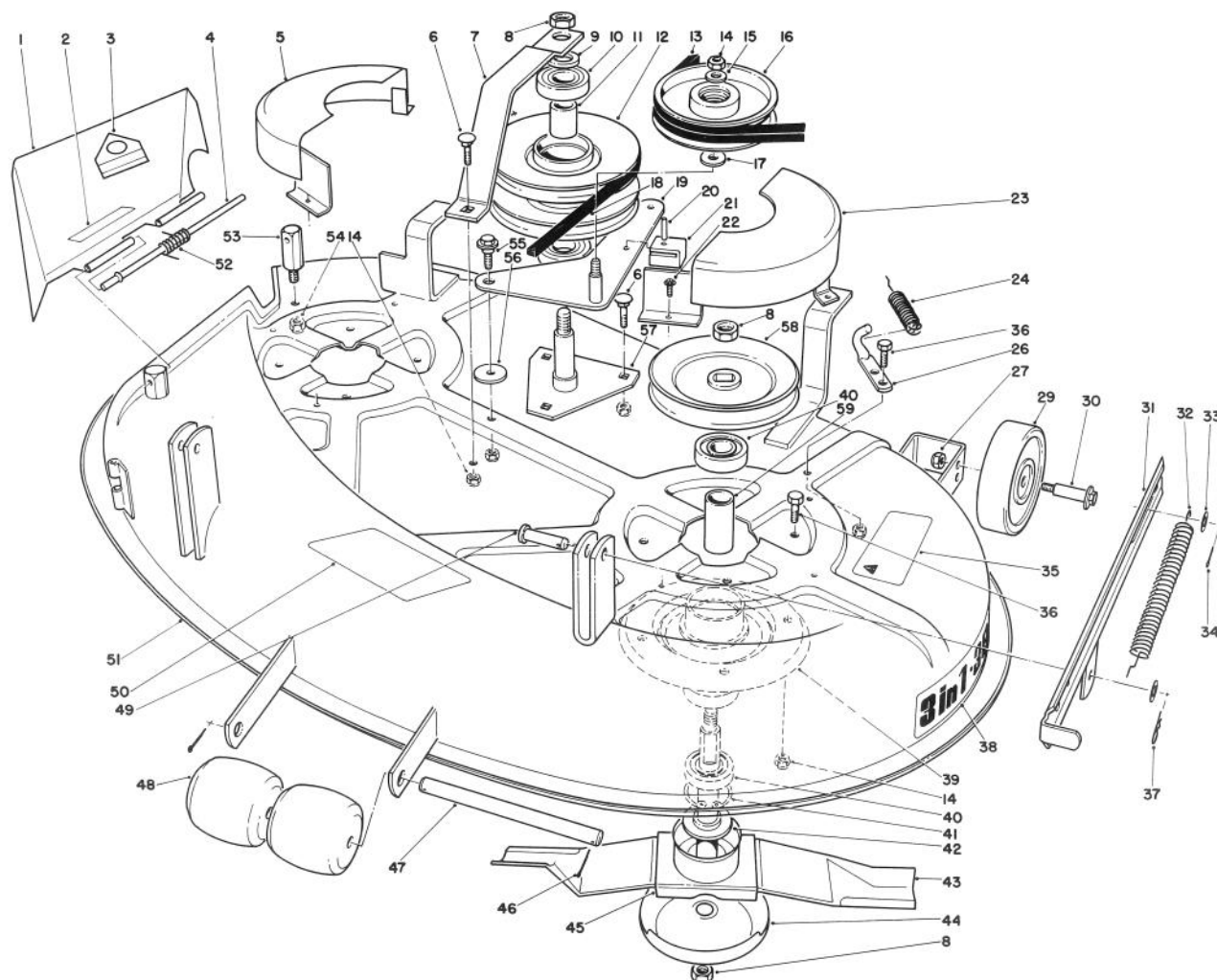


## 32" CUTTING DECK MODEL 59130

Ref. No.	Part No.	Description	No. Used
1	28-8010	Spring	1
2	44-5930	Deflector Assembly (Incl. Ref. #3)	1
3	54-9220	Decal — Deflector	1
4	322-4	Capscrew	10
5	32153-2	Locknut	1
6	28-7350	Pivot Post — Deflector	1
7	17-0980	Locknut	2
8	28-8000	Pulley — Blade Drive	1
9	251-297	Bearing	2
10	47-0100	Spacer — Bearing	1
11	283-2	Clevis Pin	2
12	47-4910	Cutter Deck	1
13	39-5370	Strap — Deck Spring	2
14	28-2340	Spring — Deck Tension	2
15	3256-24	Washer	4
16	3272-6	Cotter Pin	2
17	3296-39	Locknut	2

Ref. No.	Part No.	Description	No. Used
18	61-9760	Wheel	2
19	56-6590	Wheel Bolt	2
20	3290-250	Hair Pin Cotter	2
21	47-7240	Decal — Deck	1
22	47-0090	Spindle Shaft	1
23	32120-11	Ring — Retaining	1
24	47-0110	Spacer — Spindle	1
25	7-3522	Anti-Scalp Cup	1
26	33-4750	Blade	1
27	47-0120	Spindle Body	1
28	3296-29	Locknut	10
29	283-15	Clevis Pin	2
30	3272-11	Cotter Pin	2
31	3256-23	Washer	4
32	7-0277	Shaft — Roller	1
33	29-4820	Roller	2
34	44-5720	Baffle — Deck	1
35	28-5250	Belt — Deck Drive	1





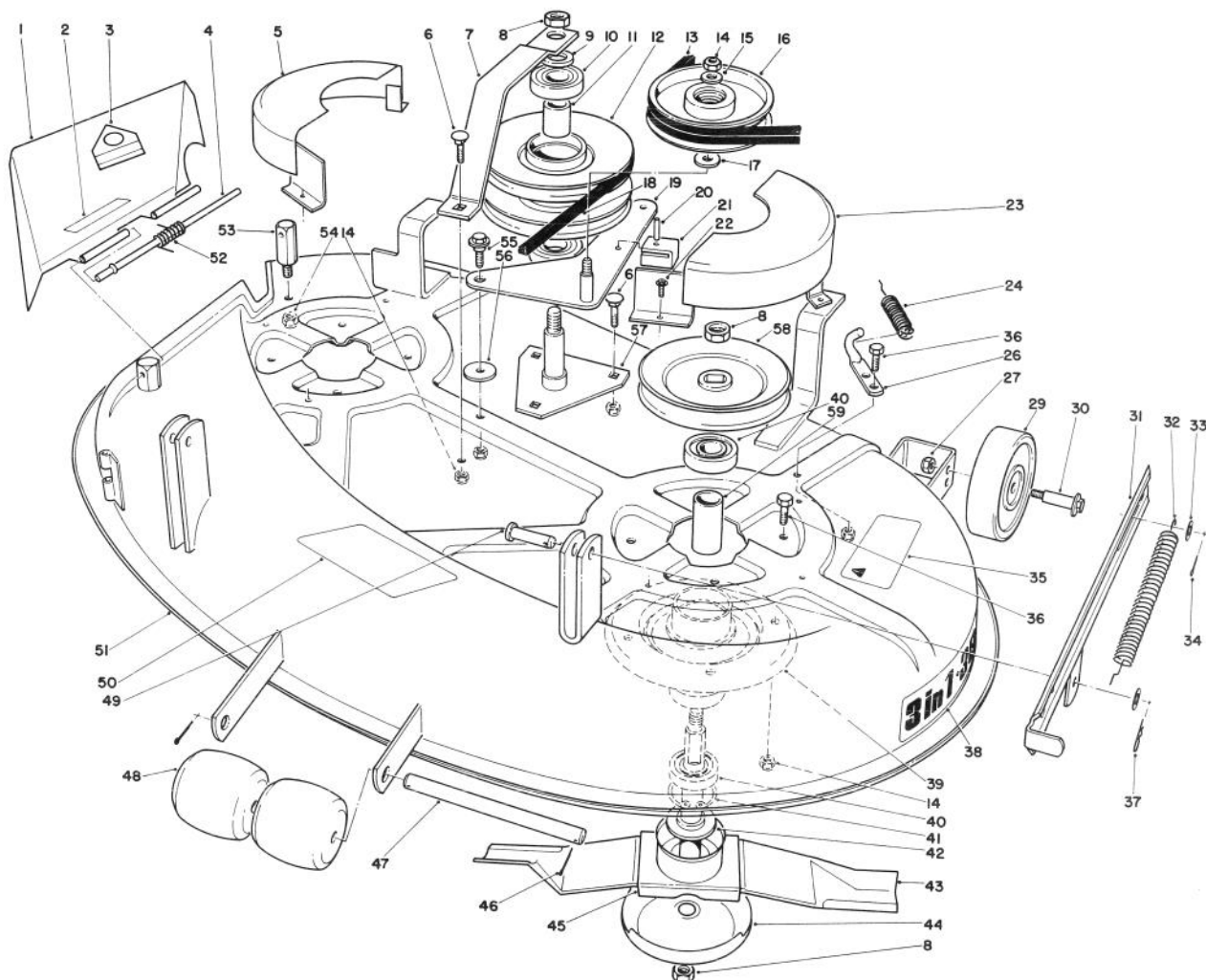
## 38" CUTTING DECK MODEL NO. 59147

Ref. No.	Part No.	Description	No. Used
1	57-4760	Deflector Assembly (Incl. Ref. #2-3)	1
2	36-3400	Decal — Warning	1
3	54-9220	Decal — Deflector Danger	1
4	57-4380	Rod — Deflector Hinge	1
5	57-4590	Cover — Belt R.H.	1
6	3230-1	Bolt Carriage	4
7	57-4650	Support — Pulley	1
8	17-0980	Nut — Lock	5
9	3256-27	Washer	1
10	251-297	Bearing	2
11	57-4430	Spacer — Tubular	1
12	57-4450	Pulley Assembly (Incl. Ref. #10-11)	1
13	57-4740	V-Belt (Deck)	1
14	3296-29	Nut — Lock	15
15	3256-2	Washer	1
16	36-3220	Pulley — Idler	1
17	3256-4	Washer	1
18	57-4750	V-Belt (Eng - Deck)	1
19	57-4500	Bracket — Idler	1
20	32121-99	Pin — Roll	1

Ref. No.	Part No.	Description	No. Used
21	57-4680	Guide — Idler Bracket	1
22	32104-76	Screw — Hex Hd.	6
23	57-4600	Cover — Belt L.H.	1
24	28-2340	Spring — Extension	1
26	57-4510	Rod — Spring	1
27	3296-39	Nut — Hex	2
29	61-9760	Wheel	2
30	56-6590	Bolt — Wheel	2
31	57-4550	Strap — Deck Spring (L.H.)	1
*	39-5370	Strap — Deck Spring (R.H.)	1
32	28-2340	Spring — Deck Tension	2
33	3256-24	Washer — Flat	4
34	3272-6	Pin — Cotter	2
35	26-7970	Decal — Caution	1
36	322-3	Screw — Cap Hex Hd.	9
37	3290-250	Pin — Hair	2
38	57-4860	Decal — Deck	1
39	60-9670	Spindle	2
40	251-297	Bearing	4
41	32120-11	Ring — Retaining	2
42	47-0110	Spacer — Spindle	2
43	57-4700	Blade	2

\* Not Illustrated



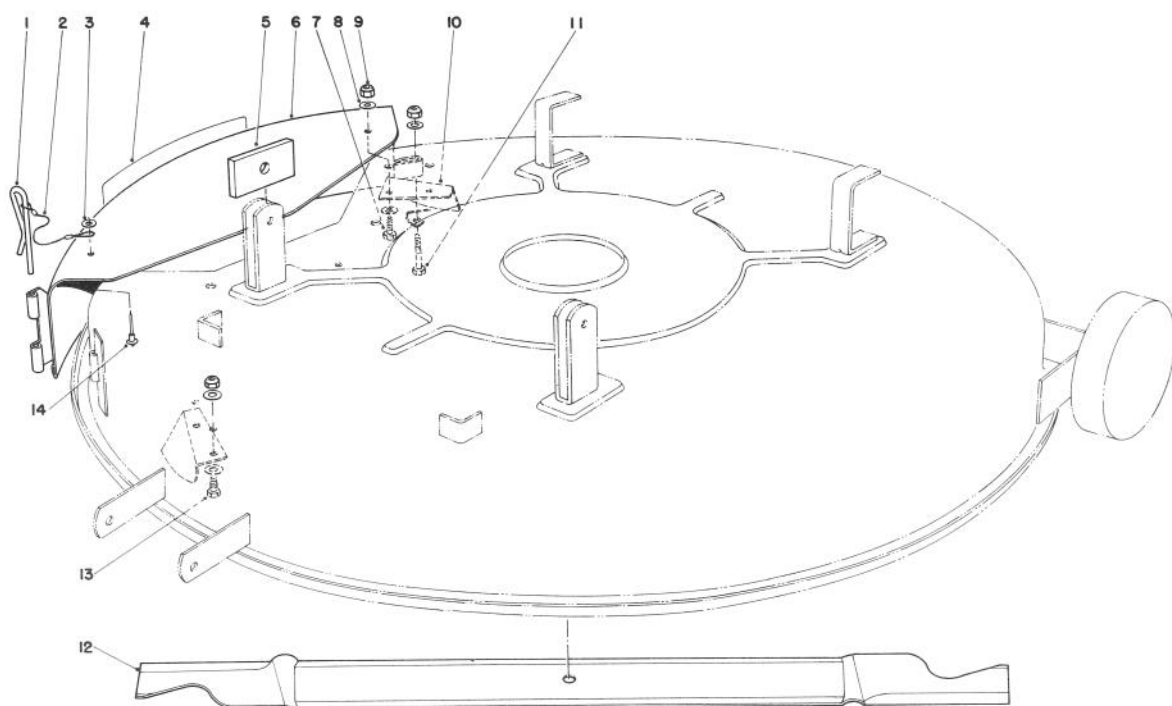


### 38" CUTTING DECK MODEL NO. 59147 (Continued)

Ref. No.	Part No.	Description	No. Used
44	7-3522	Cup — Anti Scalp	2
45	47-0091	Shaft — Spindle	2
46	3272-11	Pin — Cotter	2
47	7-0277	Shaft — Roller	1
48	29-4820	Roller	2
49	283-15	Pin — Clevis	2
50	57-4790	Decal — Belt Routing	1
51	57-4400	Deck — 38"	1
52	57-6950	Spring — Torsion	1

Ref. No.	Part No.	Description	No. Used
53	57-4360	Pivot Post — Rear	1
54	3296-44	Nut — Lock	1
55	19-1470	Bolt — Shoulder	1
56	5-4460	Washer — Pivot	1
57	57-4350	Jackshaft	1
58	55-7690	Pulley — Spindle	2
59	54-0210	Spacer — Bearing	2
*	12-3219	Loose Parts	1

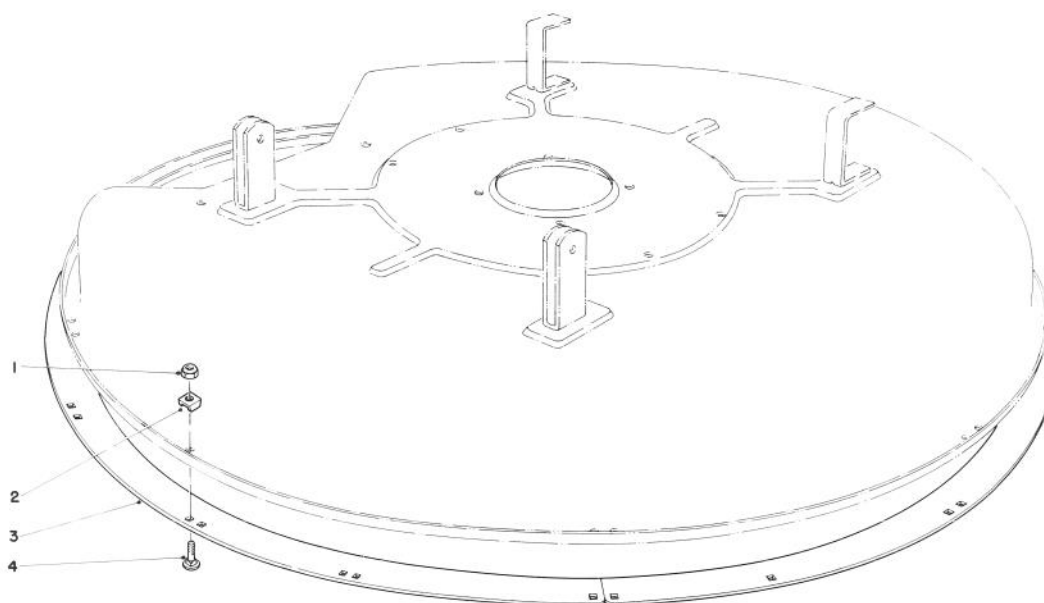
\* Not Illustrated



## MULCHER KIT MODEL 59155 (Optional)

Ref. No.	Part No.	Description	No. Used
1	28-8130	Pin — Chute Locking	1
2	28-8070	Lanyard	1
3	3256-49	Washer	1
4	44-5910	Decal — Mulcher Cover	1
5	44-5820	Spacer — Deck Angle	2
6	44-5700	Cover — Mulcher Assembly (Incl. Ref. #1-4 & 14)	1
7	322-5	Capscrew — Hex. Head	1

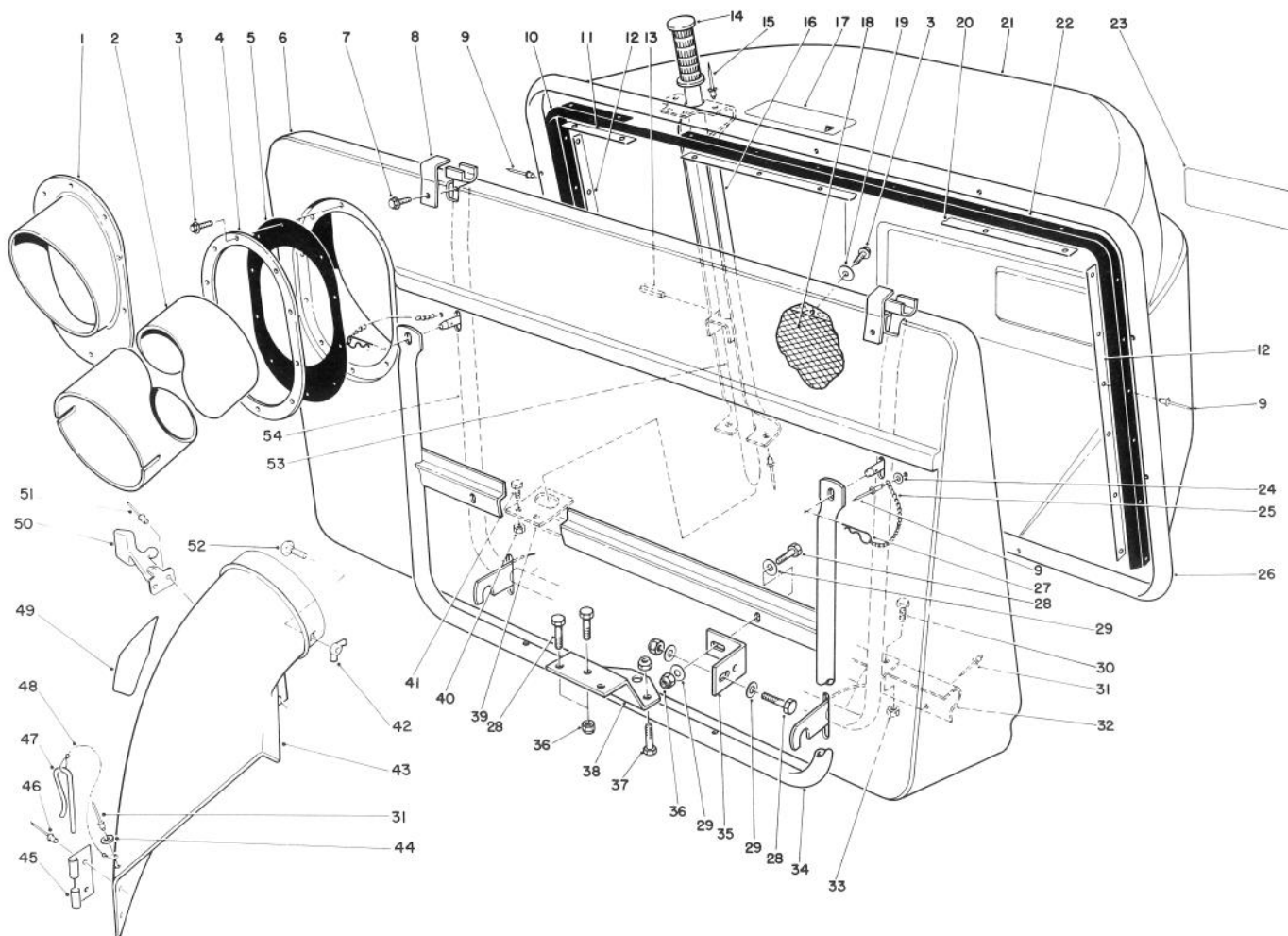
Ref. No.	Part No.	Description	No. Used
8	3256-23	Washer	9
9	3296-29	Locknut	5
10	44-5810	Kicker	2
11	322-10	Capscrew — Hex. Head	1
12	39-3480	Blade — Mulcher	1
13	322-3	Capscrew — Hex. Head	3
14	3290-282	Rivet — Pop	1



## WET GRASS BAGGING KIT NO. 38-5730 (Optional)

Ref. No.	Part No.	Description	No. Used
1	3296-29	Locknut	12
2	56-7880	Spacer — Deck Ring	12

Ref. No.	Part No.	Description	No. Used
3	38-6030	Ring — Deck	4
4	3230-2	Carriage Bolt	12

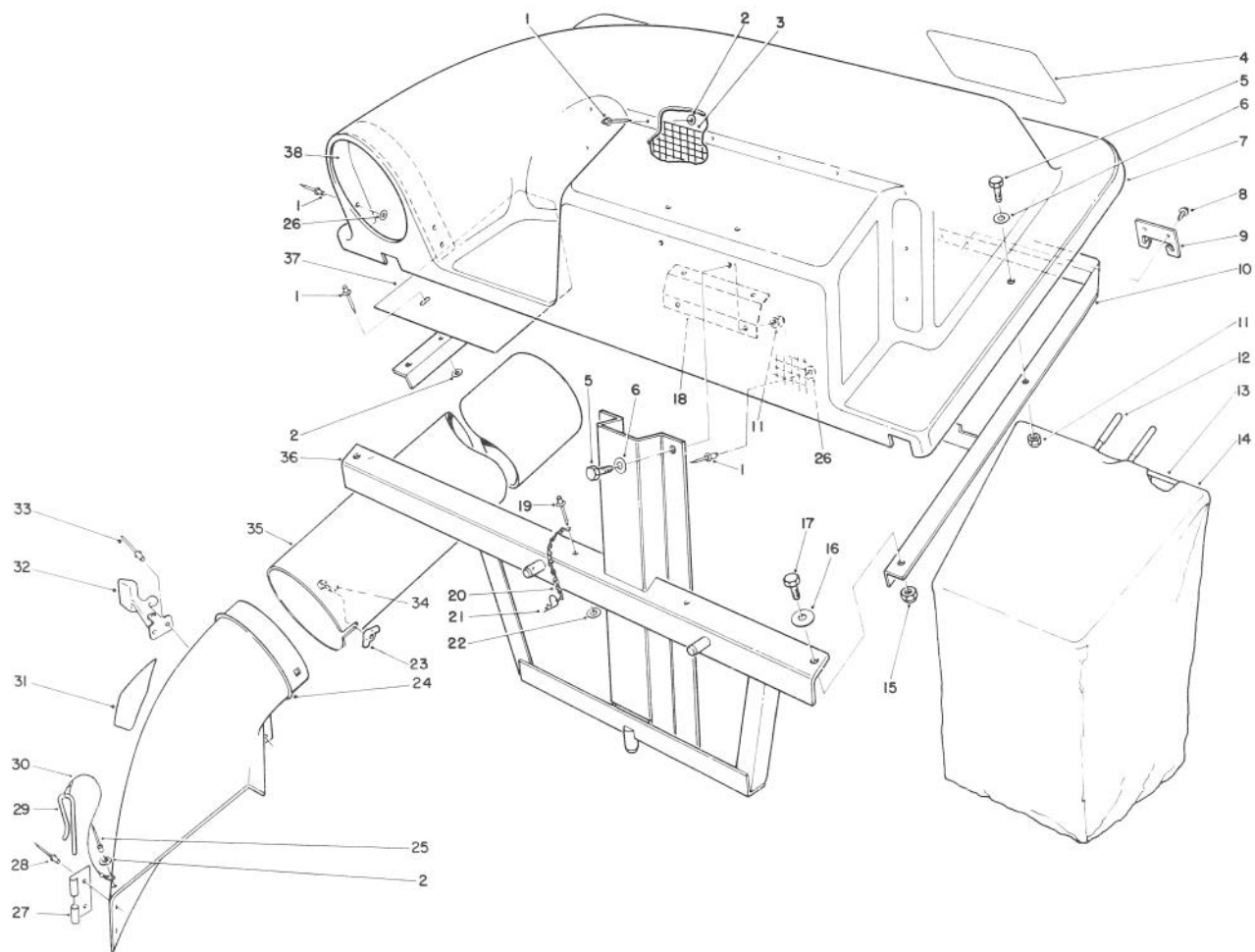


## EASY-EMPTY GRASS CATCHER MODEL 59111 (Optional)

Ref. No.	Part No.	Description	No. Used
1	62-4240	Adapter — Duct	1
2	47-7210	Duct	1
3	32104-76	Screw — Self Tapping	18
4	28-7760	Ring — Retainer	1
5	28-7770	Ring — Retainer Rubber	1
6	28-7810	Bag — Front	1
7	32104-60	Screw — Hex Hd. Self Tapping	2
8	28-7700	Retainer Pivot Bracket	2
9	3290-415	Domed Head Rivet	22
10	36-2520	Seal — Bag R.H.	1
11	29-5540	Retainer — External Top	1
12	29-5550	Retainer — External Bag	2
13	32121-79	Pin — Roll	1
14	233-40	Grip — Handle	1
15	3269-4	Rivet — Domed Head	16
16	38-2920	Channel — Dump Handle	1
17	55-7270	Decal — Warning	1
18	28-7840	Screen — Bag	1
19	3256-61	Washer — Fender	8
20	62-4230	Retainer	1
21	36-2120	Grass Basket — Rear	1
22	36-2530	Seal — Bag L.H.	1
23	25-2200	Decal	1
24	5-1254	Washer	2
25	2830-10	Chain	2
26	28-7670	Frame — Bag Support	1
27	3290-355	Hair Pin Cotter	2
28	322-4	Capscrew — Hex Hd.	7
29	3256-23	Washer — Plain	9

Ref. No.	Part No.	Description	No. Used
30	322-2	Capscrew — Hex Hd.	2
31	3290-282	Rivet	5
32	28-7830	Frame Support Bracket	1
33	32152-1	Nut — Lock	2
34	28-7780	Support — Bag	1
35	56-7190	Bracket — Mounting Grass Catcher	2
36	3296-29	Nut — Lock	9
37	322-7	Capscrew — Hex Hd.	4
38	51-2970	Bracket — Mounting Grass Catcher	1
39	28-7820	Hanger — Frame Tower	1
40	32152-4	Nut — Lock	2
41	321-3	Capscrew — Hex Hd.	2
42	32103-14	Wing — Nut	2
43	62-7800	Chute Assembly (Incl. Ref. #31 & 44-51)	1
44	3256-49	Washer	1
45	28-8050	Bracket — Chute Mounting	1
46	3290-412	Rivet	2
47	28-8130	Pin — Chute Locking	1
48	28-8070	Lanyard	1
49	54-9220	Decal — Danger	1
50	57-4670	Latch — Flexible	1
51	3269-13	Rivet	2
52	3229-1	Carriage Bolt	2
53	29-5470	Handle — Dump	1
54	28-7710	Bag — Frame	1
*	12-7029	Loose Parts	1

\* Not Illustrated

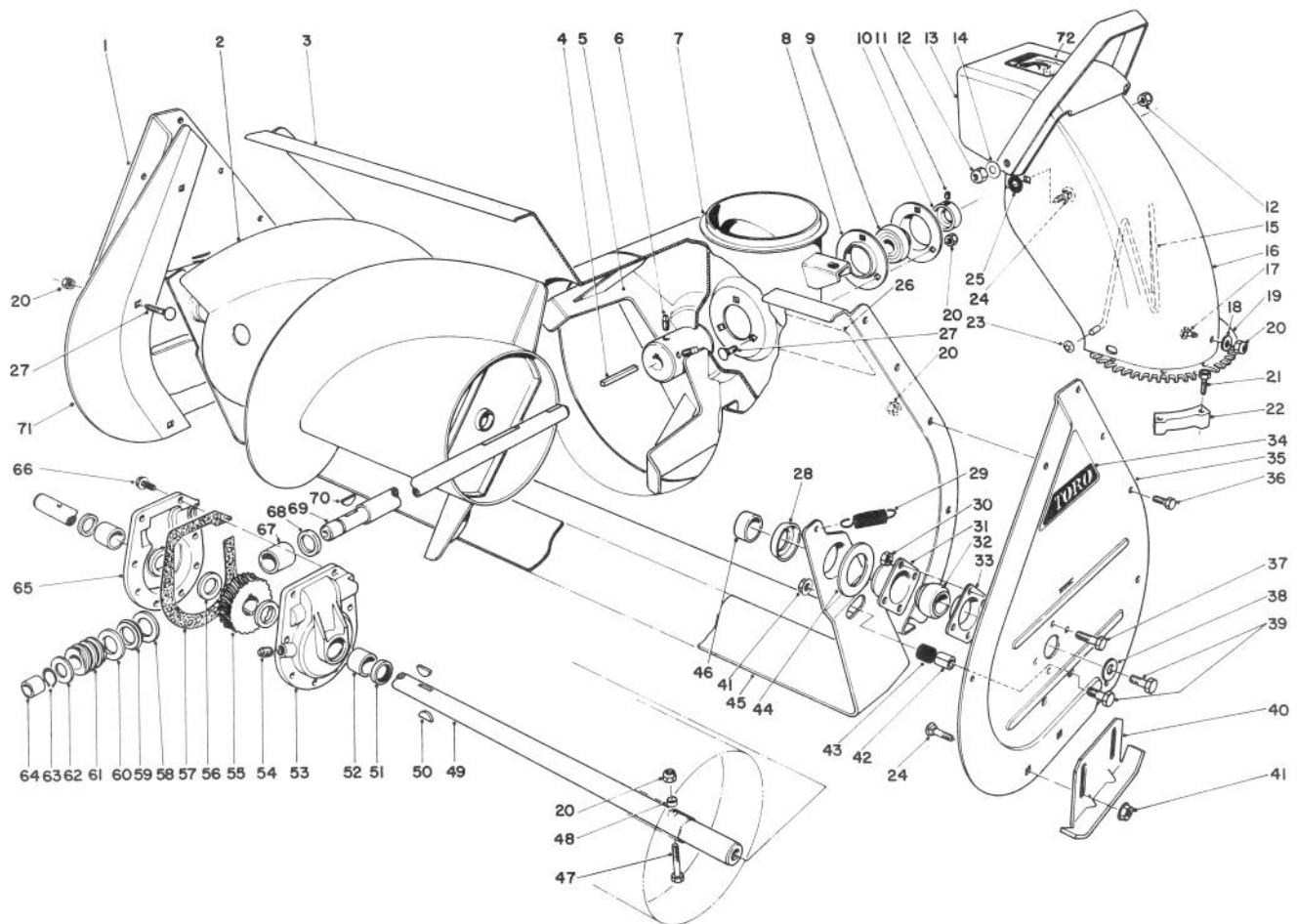


## TWIN BAGGER GRASS CATCHER MODEL NO. 59184 (Optional)

Ref. No.	Part No.	Description	No. Used
1	3269-4	Rivet — Pop	22
2	3256-49	Washer — Plain	13
3	61-9890	Screen	1
4	62-3640	Decal	1
5	322-5	Screw — Cap Hex Hd.	8
6	3256-23	Washer — Plain	8
7	61-9790	Cover	1
8	32144-4	Screw — Hex Hd.	4
9	61-9860	Bracket — Bag Frame	2
10	61-9810	Cover — Frame W.A.	1
11	3296-29	Nut — Lock	8
12	47-2550	Grip — Bag Handle	4
13	47-2620	Frame — Bag	2
14	47-2570	Bag — Twin Bagger	2
15	3296-44	Nut — Lock	2
16	3256-24	Washer — Plain	2
17	323-6	Screw — Cap Hex. Hd.	2
18	61-9880	Plate — Back Up	1
19	3290-415	Rivet — Pop	2
20	2830-10	Chain	2

Ref. No.	Part No.	Description	No. Used
21	3290-355	Hairpin — Cotter	2
22	3269-10	Washer	2
23	32103-14	Nut — Wing	2
24	62-7800	Chute Assembly (Incl. Ref. #2, 25 & 27-33)	1
25	3290-282	Rivet — Pop	1
26	3256-14	Washer — Plain	10
27	28-8050	Bracket — Chute Mounting	1
28	3290-412	Rivet — Pop	2
29	28-8130	Pin — Chute Locking	1
30	28-8070	Lanyard	1
31	54-9220	Decal — Danger	1
32	57-4670	Latch — Flexible	1
33	3269-13	Rivet	2
34	3229-1	Carriage Bolt	2
35	47-7210	Duct	1
36	61-9900	Mounting Frame W.A.	1
37	61-9870	Baffle	1
38	62-6890	Support Inlet	1
*	12-7049	Loose Parts	1

\* Not Illustrated



## AUGER ASSEMBLY

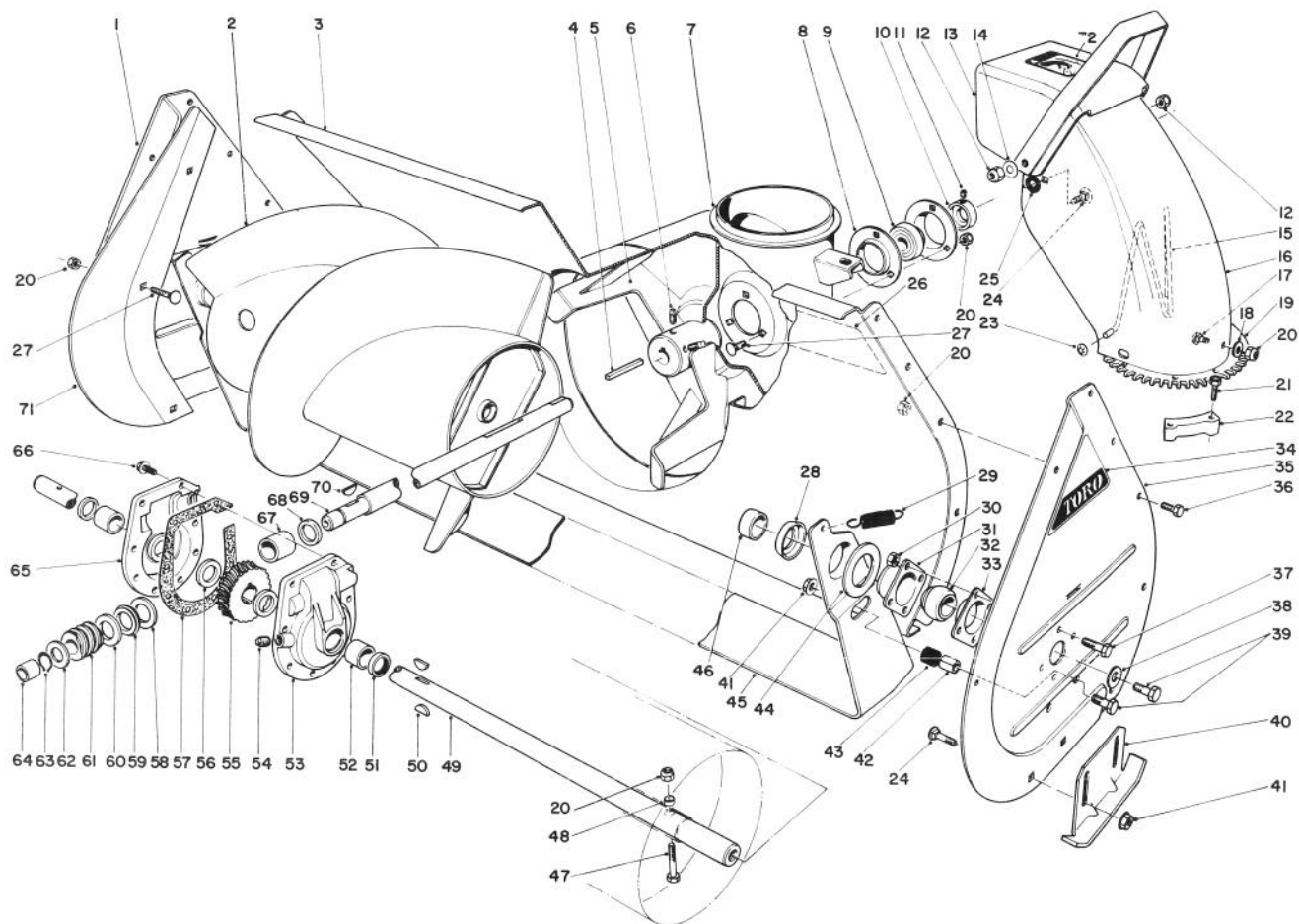
### 36" SNOWTHROWER ATTACHMENT MODEL NO. 59160 (Optional)

Ref. No.	Part No.	Description	No. Used
1	39-6120	Sideplate Auger — R.H.	1
2	26-6180	Auger — R.H.	1
*	26-6190	Auger — L.H.	1
3	49-6960	Auger Housing	1
4	6-8590	Key — Impeller	1
5	19-8890	Impeller	1
6	3242-4	Set Screw	2
7	25-5170	Chute Ring	1
8	251-229	Bearing Flange	2
9	251-224	Bearing — Impeller (Incl. Ref. 10 & 11)	1
10	251-231	Locking Collar	1
11	3246-3	Set Screw	2
12	32152-2	Conelock Nut	2
13	11-7120	Deflector	1
14	3290-340	Belleville Washer	2
15	12-2040	Chute Wire	1
16	25-5440	Upper Chute	1
17	3230-18	Carriage Bolt	3
18	3256-23	Flat Washer	3
19	25-5290	Swivel Plate	1
20	3296-29	Locknut	24
21	27-0220	Screw — Special	6

Ref. No.	Part No.	Description	No. Used
22	25-5450	Swivel Block	3
23	3290-326	Push Nut	2
24	3231-27	Carriage Bolt	6
25	20-4320	Rubber Washer	2
26	29-6350	Decal — Auger Warning	1
27	3230-1	Carriage Bolt	9
28	26-6400	Positioner — Scraper Blade	2
29	5-7290	Spring — Scraper	2
30	32152-4	Locknut	8
31	20-0990	Flange — Bearing Front	2
32	20-0980	Bearing	2
33	20-1000	Flange — Bearing Rear	2
34	17-6500	Decal — Auger Sideplate	2
35	39-6130	Sideplate Auger — L.H.	1
36	322-2	Capscrew	10
37	321-3	Capscrew	8
38	3-0750	Flat Washer	2
39	323-6	Capscrew	4
40	20-2840	Auger Skid	2
41	32128-21	Flange Locknut	6
42	25-5140	Standoff — Scraper Stop	2
43	25-5150	Bumper — Scraper Stop	2
44	20-0300	Spacer — Scraper Blade	2

\* Not Illustrated





## AUGER ASSEMBLY (Continued)

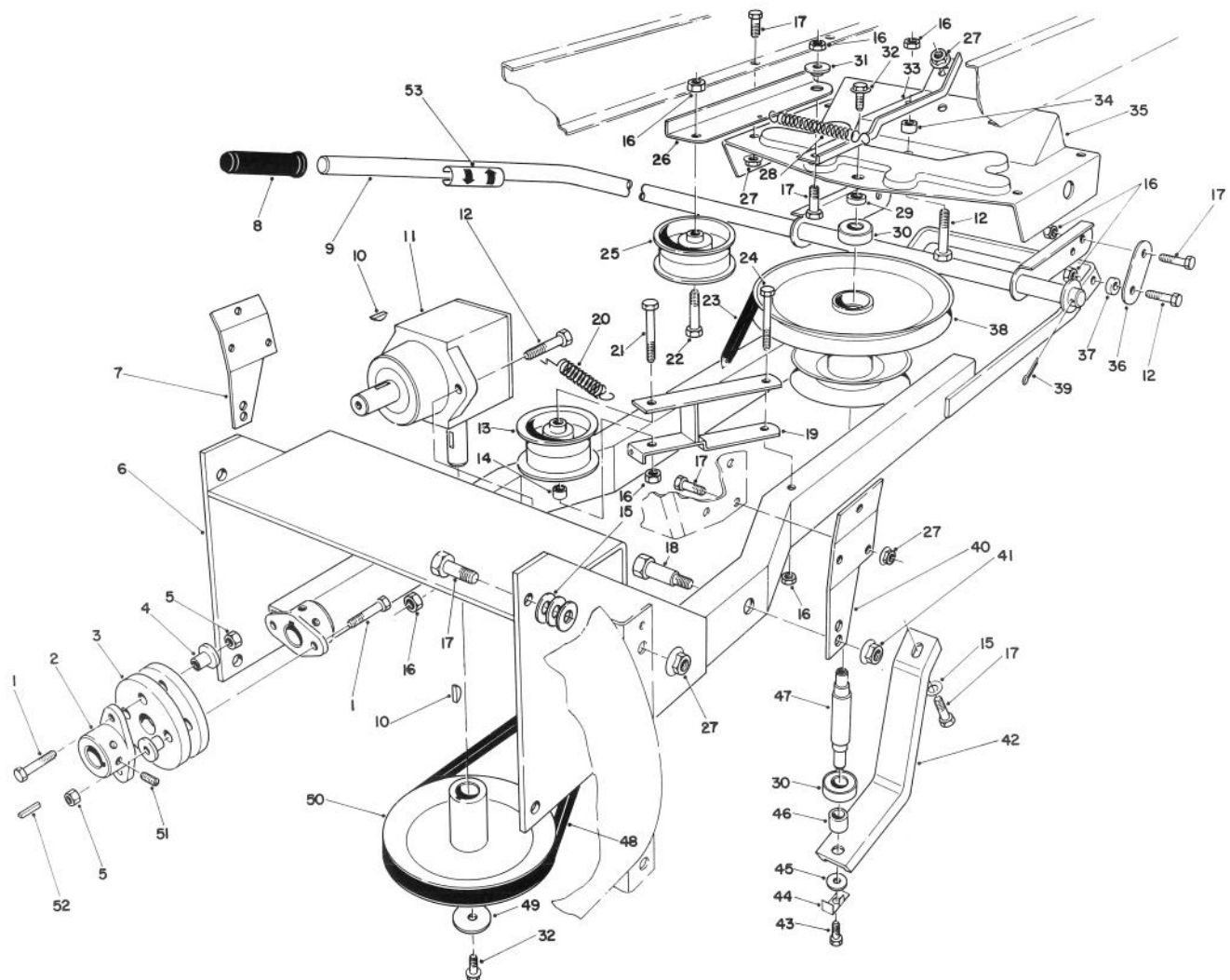
### 36" SNOWTHROWER ATTACHMENT MODEL NO. 59160 (Optional)

Ref. No.	Part No.	Description	No. Used
45	19-9160	Scraper Blade	1
46	26-6390	Spacer — Auger	2
47	17-7030	Bolt — Auger	2
48	25-5090	Spacer — Auger Hub	2
49	11-7010	Auger Shaft	1
50	3257-33	Woodruff Key	2
51	7-0045	Oil Seal	2
52	256-237	Bushing	2
53	37-8860	Gear Case Bushing Assy.—L.H. (Incl. Ref. #51, 52)	1
54	281-1	Pipe Plug	1
55	5-7180	Worm Gear	1
56	252-71	Thrust Bearing	2
57	51-0460	Gasket	1
58	252-78	Thrust Washer	1
59	252-76	Thrust Bearing	1

Ref. No.	Part No.	Description	No. Used
60	252-77	Thrust Washer	1
61	5-7170	Worm	1
62	3-8664	Thrust Washer	1
63	32120-72	Retaining Ring	1
64	256-32	Bushing	1
65	37-8850	Gear Case Bushing Assy.—R.H. (Incl. Ref. #51, 52)	1
66	32144-41	Thread Forming Screw	8
67	20-3210	Bushing	1
68	237-87	Seal	1
69	19-8540	Shaft — Impeller	1
70	3257-23	Woodruff Key	1
71	49-6620	Auger Housing Extension R.H.	1
*	49-6630	Auger Housing Extension L.H.	1
72	53-7660	Decal — Discharge	1
*	25-5280	Gear Case Assembly Complete	1

\* Not Illustrated



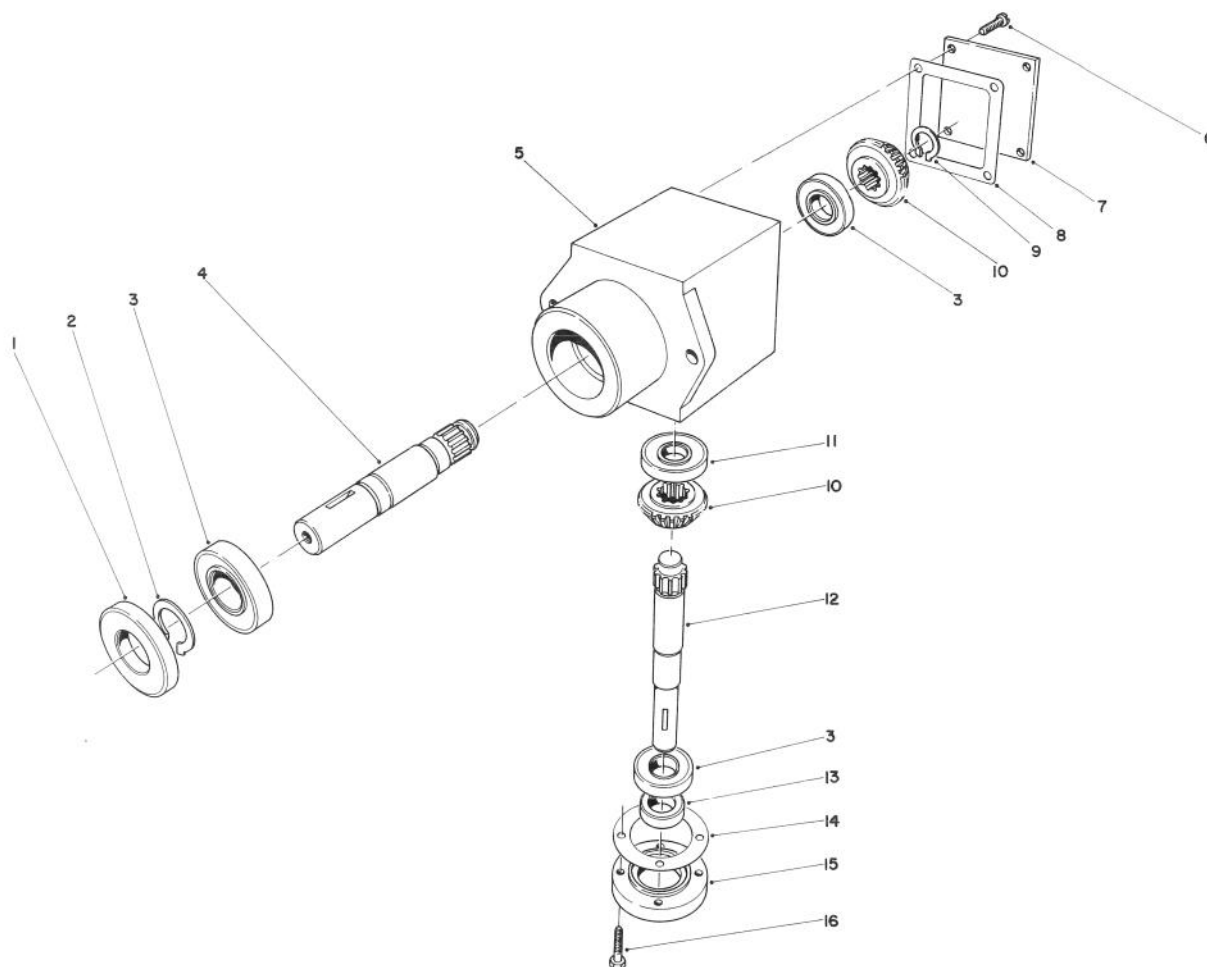


## FRAME & PULLEY ASSEMBLY

### 36" SNOWTHROWER ATTACHMENT MODEL NO. 59160 (Optional)

Ref. No.	Part No.	Description	No. Used
1	322-7	Capscrew	4
2	49-6710	Hub — Coupling	2
3	49-6880	Rubber Coupling	2
4	49-6890	Spacer — Rubber Coupling	4
5	3296-29	Locknut	4
6	49-6520	Carrier Frame	1
7	49-6590	Bracket Front Mount — R.H.	1
8	235-26	Handle Grip	1
9	49-6540	Handle — Lift	1
10	3257-5	Woodruff Key	2
11	49-6490	Gear Case Assembly	1
12	323-7	Capscrew	5
13	49-6980	Idler Pulley	1
14	20-7530	Spacer	1
15	3256-3	Flatwasher	13
16	3296-39	Locknut	10
17	323-6	Capscrew	18
18	49-6850	Shoulder Bolt	2
19	49-6910	Idler Arm — Front	1
20	49-6930	Spring — Extension	1
21	323-14	Capscrew	1
22	323-9	Capscrew	1
23	49-6940	V-Belt	1
24	323-15	Capscrew	1
25	49-6970	Idler Pulley	1
26	49-6610	Idler Arm — Rear	1
27	3290-357	Flange Locknut	15

Ref. No.	Part No.	Description	No. Used
28	49-6920	Spring — Extension	1
29	49-6680	Spacer — Upper	1
30	38-7820	Bearing	2
31	49-4040	Spacer — Idler Arm	1
32	3234-5	Flange Head Capscrew	2
33	49-6800	Support — Frame	1
34	36-5640	Spacer	1
35	49-6770	Frame — Rear	1
36	49-6550	Lift Linkage — Lower	2
37	23-5250	Spacer	2
38	49-6650	Spindle Housing Assembly	1
39	3272-17	Cotter Pin	1
40	49-6600	Bracket Front Mount — L.H.	1
41	32128-24	Flange Locknut	2
42	49-6790	Support — Shaft	1
43	322-3	Capscrew	1
44	49-6860	Locking Tab	1
45	3256-56	Flat Washer	1
46	49-6570	Spacer — Lower	1
47	49-6560	Shaft — Spindle	1
48	49-6950	V-Belt	1
49	2-1590	Flat Washer	1
50	49-6660	Pulley	1
51	3246-3	Set Screw	4
52	3-6857	Key	1
53	51-2660	Decal — Lift Control	1



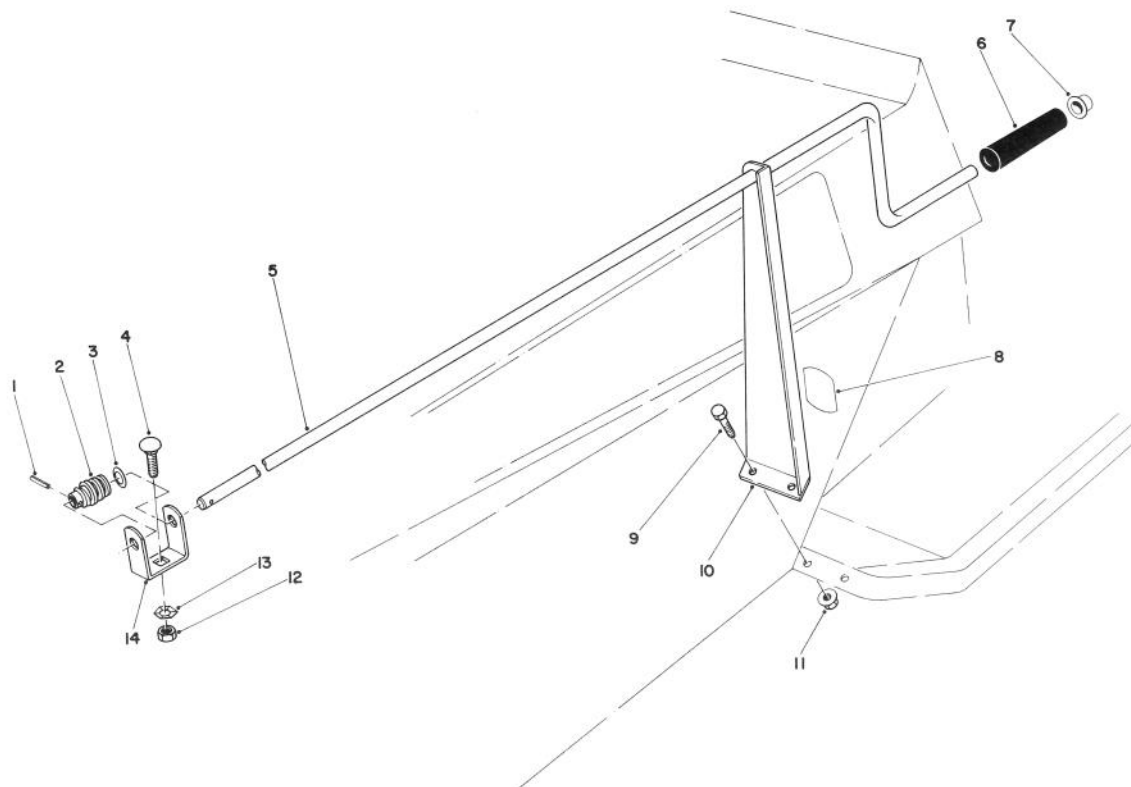
## GEAR CASE ASSEMBLY

### 36" SNOWTHROWER ATTACHMENT MODEL NO. 59160 (Optional)

Ref. No.	Part No.	Description	No. Used
1	788029	Seal	1
2	788019	Retaining Ring	1
3	780034	Bearing	3
4	776113	Shaft — Output	1
5	770026A	Gear Case	1
6	792025	Pan Head Screw	4
7	772035	Cover	1
8	788028	Gasket	1
9	788018	Retaining Ring	1

Ref. No.	Part No.	Description	No. Used
10	778046	Bevel Gear	2
11	780024	Bearing	1
12	776227	Shaft — Input	1
13	788031	Oil Seal	1
14	788030	Gasket	1
15	786029	Bearing Cap Assembly (Incl. Ref. #13 & 16)	1
16	792026	Capscrew	4
*	794340	Gear Case Assembly Complete	1

\* Not Illustrated

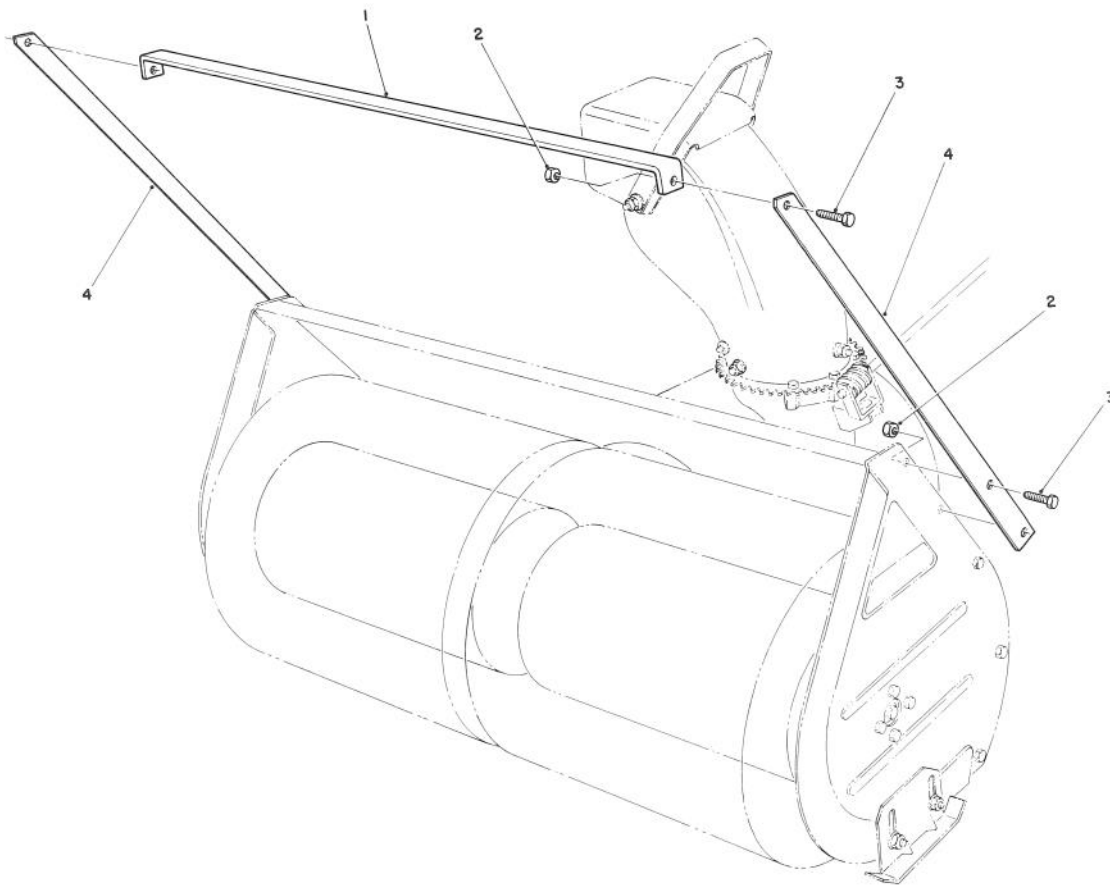


## CHUTE CONTROL ASSEMBLY

### 36" SNOWTHROWER ATTACHMENT MODEL NO. 59160 (Optional)

Ref. No.	Part No.	Description	No. Used
1	32121-50	Roll Pin	1
2	8-8600	Worm Gear	1
3	3290-212	Washer — Spring	1
4	3230-2	Carriage Bolt	1
5	51-2650	Rod — Chute Control	1
6	40-8230	Grip — Chute Control	1
7	3290-320	Push-On Speed Nut	1

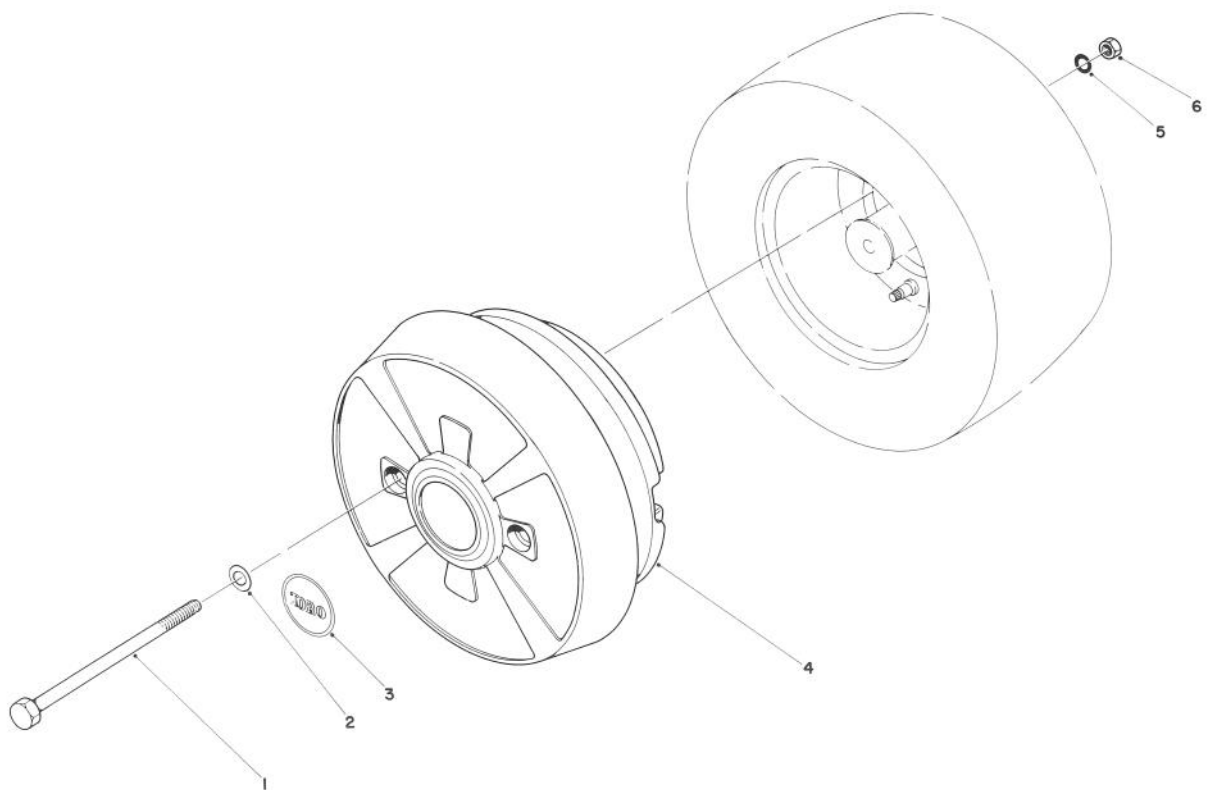
Ref. No.	Part No.	Description	No. Used
8	29-6370	Decal — Chute Direction	1
9	322-3	Capscrew	2
10	49-6730	Bracket — Chute Control	1
11	32128-20	Flange Locknut	2
12	3296-29	Locknut	1
13	3290-238	Pyramidal Washer	1
14	49-6720	Bracket — Worm	1



### DRIFT BREAKER ASSEMBLY NO. 20-0650 (Optional)

Ref. No.	Part No.	Description	No. Used
1	20-0680	Drift Breaker — Top	1
2	32152-1	Locknut	6

Ref. No.	Part No.	Description	No. Used
3	322-4	Capscrew	6
4	20-0660	Drift Breaker — Side	2



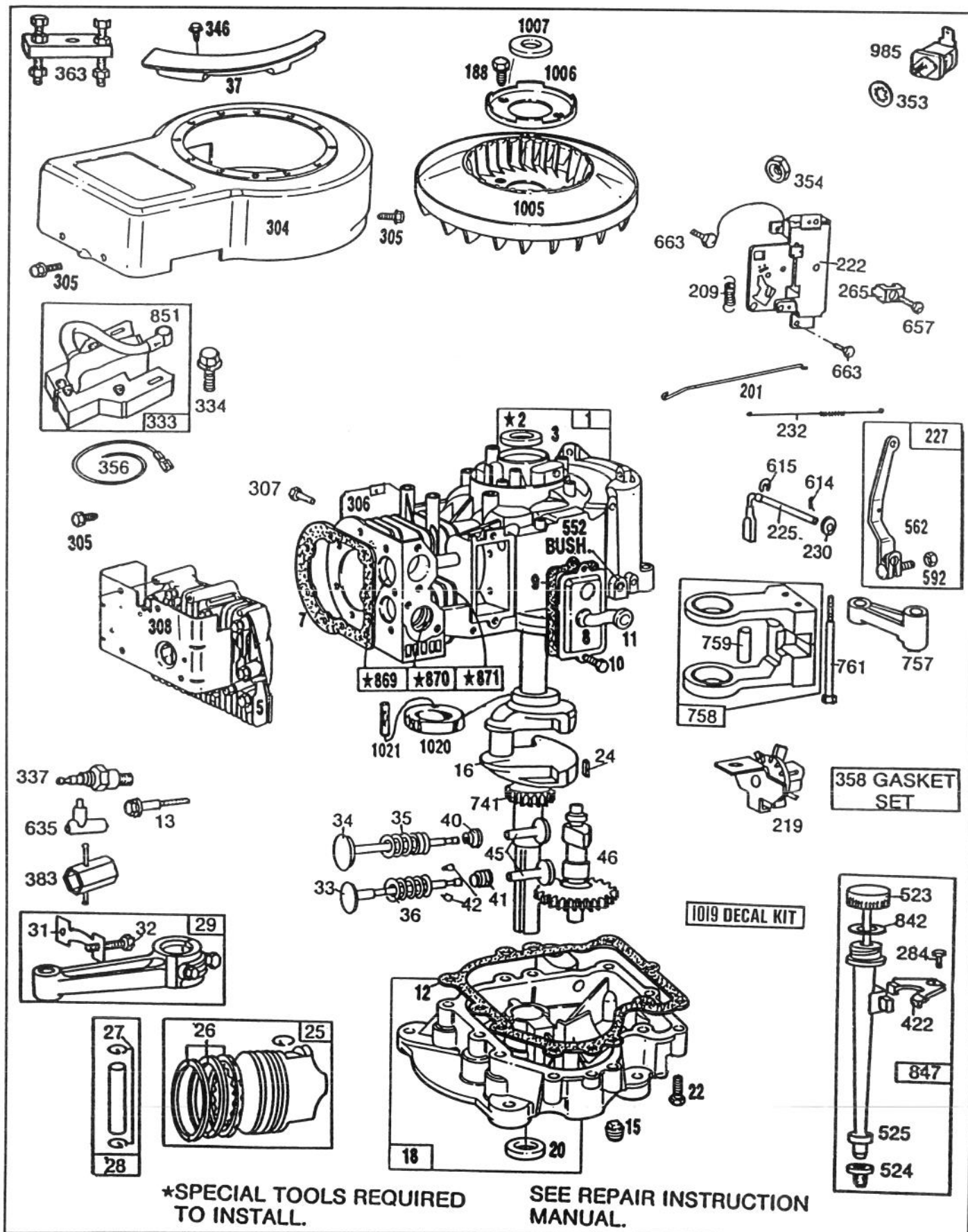
## WHEEL WEIGHT KIT MODEL NO. 59159 (Optional)

Ref. No.	Part No.	Description	No. Used
1	323-30	Capscrew	4
2	3256-24	Flatwasher	4
3	33-8340	Decal — Toro	2
4	49-4050	Wheel Weight	2

Ref. No.	Part No.	Description	No. Used
5	3253-5	Lockwasher	4
6	3217-7	Hex Nut	4
*	47-7220	Tire Chains (Optional)	2

\* Not Illustrated

# ENGINE BRIGGS & STRATTON MODEL 281707-0165-01



# ENGINE BRIGGS & STRATTON MODEL 281707-0165-01

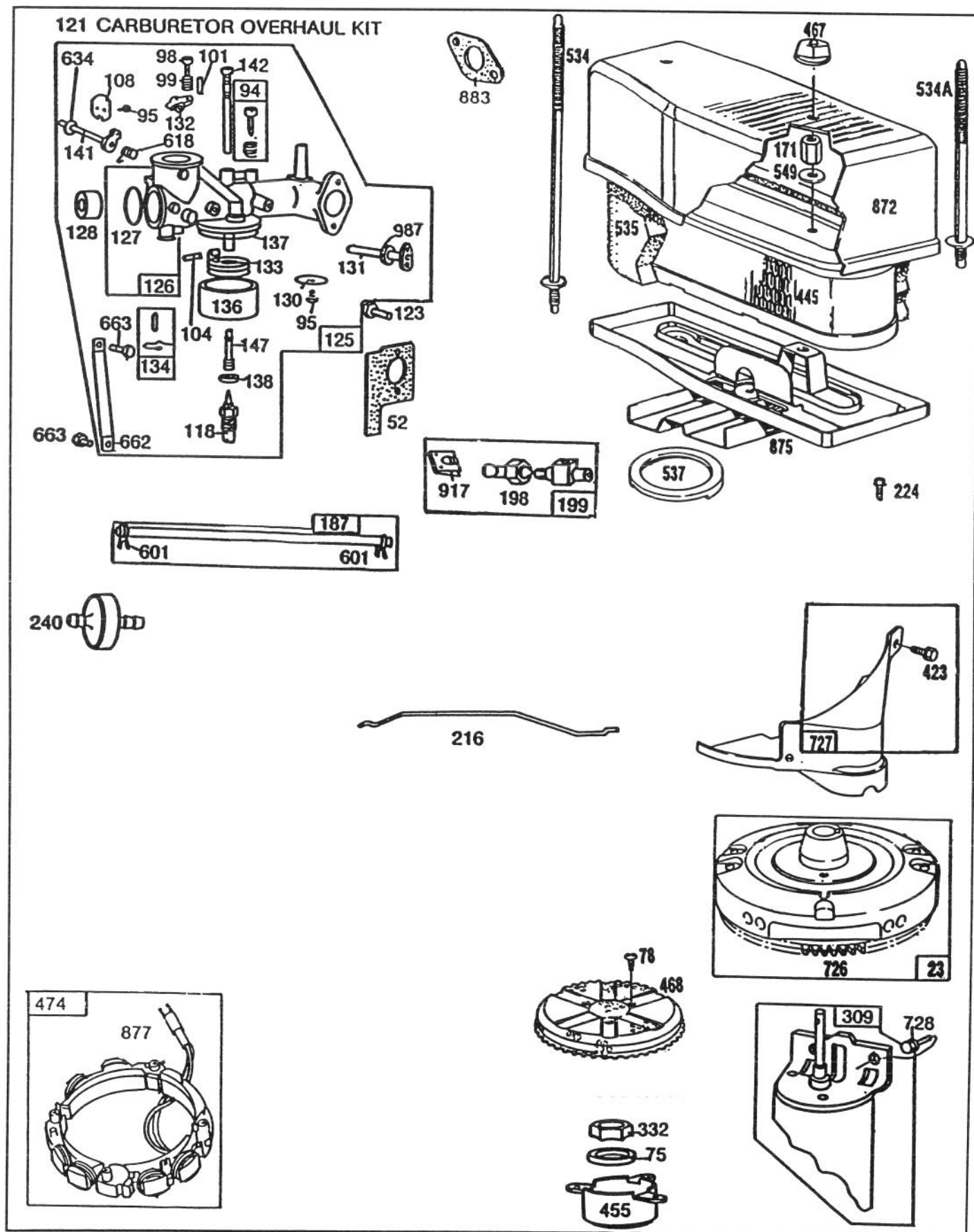
Ref. No.	Part No.	Description	No. Used
1	490450	Cylinder Assembly	1
2	399265	Bearing — Cylinder	1
3	391086	Seal — Oil	1
5	491491	Head — Cylinder	1
7	*271866	Gasket — Cylinder Head	1
8	391406	Breather Assembly	1
9	*27803	Gasket — Valve Cover	1
10	93394	Screw — Sem	1
11	280100	Tube — Breather	1
12	*271916	Gasket — Crankcase Cover 1/64" thick	1
	*271996	Gasket — Crankcase Cover .005" thick	1
	*271997	Gasket — Crankcase Cover .009" thick	1
13	93723	Screw — Cylinder Head (3" long) <b>Note:</b> 93781 Stud — Cylinder Head 22963 Washer	1
15	91084	Plug — Oil Drain	1
16	490466	Crankshaft <b>Note:</b> Order Part Number 94196 for Timing Gear Key	1
18	490452	Base — Engine	1
20	291675	Seal — Oil	1
22	94305	Screw — Base Mounting Sem	1
24	222698	Key — Flywheel	1
25	394661	Piston Assembly — Standard	1
	394662	Piston Assembly — .010" O.S.	1
	394663	Piston Assembly — .020" O.S.	1
	394664	Piston Assembly — .030" O.S.	1
		<b>PISTON RING SET</b> <b>Note:</b> For Chrome Ring Set— Std. Size—Order No. 392331	
26	394665	Ring Set — Piston, Std.	1
	391781	Ring Set — Piston, .010" O.S.	1
	391782	Ring Set — Piston, .020" O.S.	1
	391783	Ring Set — Piston, .030" O.S.	1
27	260924	Lock — Piston Pin	1
28	299691	Pin Assembly — Piston, Std.	1
	391286	Pin Assy. — Piston, .005" O.S.	1
29	490348	Rod Assy. — Connecting <b>Note:</b> For Connecting Rod with .020" undersize Crankpin Bore — Order No. 490469	1
31	222299	Lock — Conn. Rod Screw	1
32	92909	Screw — Conn. Rod	1
33	262246	Valve — Exhaust	1
34	262247	Valve — Intake	1
35	65906	Spring — Intake Valve	1
36	26828	Spring — Exhaust Valve	1
37	223752	Guard — Flywheel	1
40	221596	Retainer — Intake Valve	1
41	292260	Rotocoil — Exhaust Valve	1
42	93630	Retainer — Exhaust Valve Rotocoil	2
45	262248	Tappet — Valve	1
46	212897	Gear — Cam	1
188	93535	Screw — Sem	1
201	262348	Link — Governor	1
209	260695	Spring — Governor	1

Ref. No.	Part No.	Description	No. Used
219	490815	Oil Slinger — Gov. Gear and Bracket Assembly	1
222	390784	Plate — Gov. Control	1
225	231058	Crank — Governor	1
227	490927	Lever Assy. — Governor	1
230	222450	Washer — Gov. Crank	1
232	260584	Spring — Governor Link	1
265	221535	Clamp — Casing	1
284	93804	Screw — Clamp Mtg.	1
304	490689	Housing — Blower	1
305	93158	Screw — Blower Housing Mounting Sem	1
306	223715	Shield — Cylinder	1
307	93163	Screw — Cylinder Shield Mounting Sem	1
308	491490	Cover — Cylinder Head	1
333	398811	Armature — Magneto	1
334	93381	Screw — Armature Mounting Sem	1
337	293918	Plug — Spark (Resistor Type)	1
346	93705	Screw — Hex Head	1
353	92791	Washer — Lock, Shakeproof	1
354	90576	Nut — Hex	1
356	398808	Wire — Ground	1
358	490525	Gasket Set	1
363	19203	Puller — Flywheel	1
383	89838	Wrench — Spark Plug	1
422	223721	Clamp — Oil Filler Tube	1
523	490327	Cap and Dipstick — Oil Filler	1
524	68838	Seal — Filler Tube	1
525	280741	Tube — Oil Filler	1
552	231055	Bushing — Gov. Crank	1
562	92613	Bolt — Governor Lever	1
592	231082	Nut — Hex, 10-24	1
614	93306	Cotter — Hair Pin	1
615	93307	Retainer — E-Ring	1
635	66538	Elbow — Spark Plug	1
657	93496	Screw — Sem	1
663	93572	Screw	1
741	262135	Gear — Timing	1
757	212359	Link — Counterweight	1
758	399891	Counterweight Assembly	1
759	298909	Pin — Counterweight	1
761	93875	Screw — Counterweight	1
842	270920	Seal — Oil Filler Cap	1
847	490474	Fill Group — Oil	1
851	221798	Terminal — Ignition Cable	1
869	261463	Seat — Intake Valve (Standard)	1
870	210940	Seat — Exhaust Valve (Standard)	1
871	261961	Guide — Exhaust Valve <b>Note:</b> 231218 Guide — Intake Valve (Brass) See Repair Manual	1
985	398525	Insulator Assembly	1
1005	280687	Fan — Flywheel	1
1006	223726	Retainer — Fan	1
1007	231531	Spacer — Clutch	1
1019	491255	Decal (Label) Kit	1
1020	262243	Eccentric	1
1021	94160	Pin — Eccentric	1

\* Included in Gasket Set — Part No. 490525.



# ENGINE BRIGGS & STRATTON MODEL 281707-0165-01 (Continued)



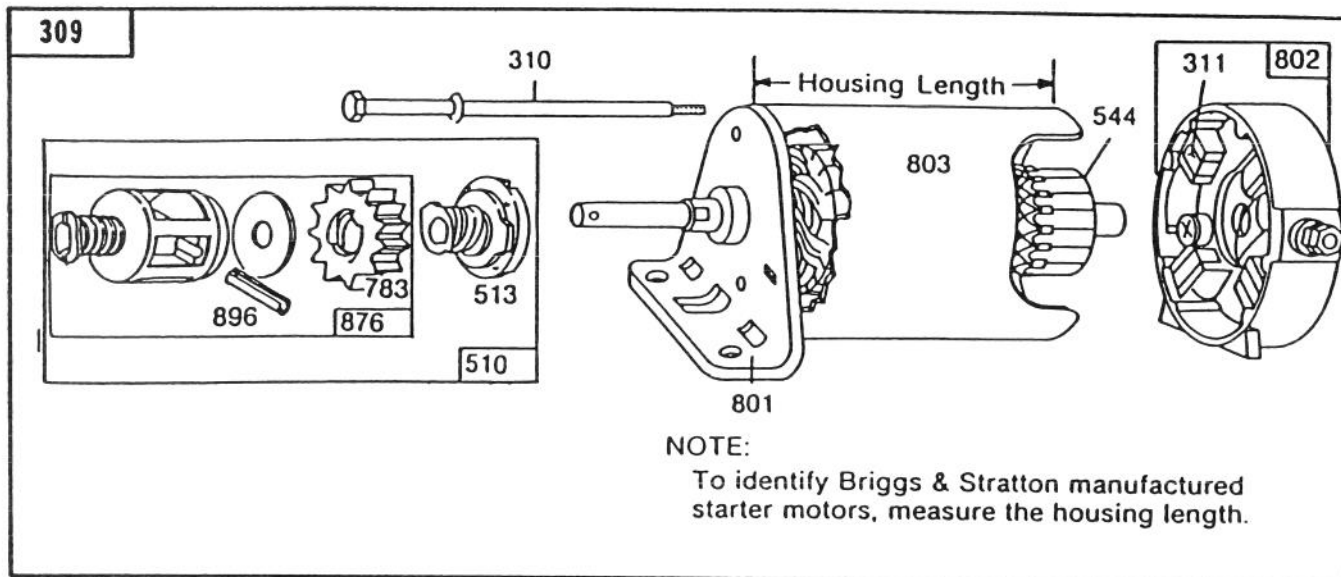
# ENGINE BRIGGS & STRATTON MODEL 281707-0165-01 (Continued)

Ref. No.	Part No.	Description	No. Used
23	399917	Flywheel & Ring Gear Assy. — Magneto	1
52	*270872	Gasket Carburetor Mtg.	1
75	224061	Washer — Spring	1
78	93805	Screw — Sem	1
94	†292681	Valve Assy. — Carburetor Idle	1
95	93499	Screw — Throttle & Choke Valve Mounting Sem	1
98	91920	Screw — Machine, Fill. Hd.	1
99	26157	Spring — Throttle Adjustment	1
101	93043	Pin — Throttle Stop	1
104	†230896	Pin — Float Hinge	1
108	222010	Valve Choke	1
118	†396568	Valve Needle	1
121	394698	Carburetor Overhaul Kit	1
123	93357	Screw — Carburetor Mtg.	1
125	491031	Carburetor Assembly	1
126	490473	Body Assy. — Carburetor	1
127	221997	Plug — Welch	1
128	211960	Venturi — Carburetor	1
130	222433	Valve — Throttle	1
131	491006	Shaft and Lever — Throttle	1
132	211712	Stop — Throttle	1
133	299707	Float — Carburetor	1
134	†394681	Valve — Fuel Inlet	1
136	221995	Bowl — Float	1
137	†270511	Gasket — Float Bowl	1
138	†222014	Washer — Float Bowl	1
141	390684	Shaft and Lever — Choke	1
142	†299740	Nozzle — Carburetor	1
147	†231323	Screw — Nozzle	1
171	231532	Nut — Air Cleaner Mtg.	1
187	393815	Line — Fuel	1
198	293934	Valve — Fuel Shut-Off	1
199	399949	Connector — Fuel Pipe	1

Ref. No.	Part No.	Description	No. Used
216	261610	Link — Choke	1
224	94018	Screw — Sem	1
240	298090	Filter — Fuel	1
309		Motor Starting (12 Volt) See Page 32 for Replacement Parts for Starting Motors	1
332	92284	Nut — Hex	1
423	93984	Screw — Sem	1
445	491519	Cartridge — Air Cleaner	1
455	222561	Cup — Screen Mounting	1
467	212706	Knob — Air Cleaner	1
468	223713	Screen — Flush Rotating	1
474	392595	Stator — Alternator	1
534	94248	Stud — Air Cleaner	1
534A	94246	Stud — Air Cleaner	1
535	271962	Element — Air Cleaner	1
537	270853	Gasket — Air Cleaner	1
549	94249	Washer — Air Cleaner	1
601	93053	Clamp — Fuel Pipe	1
618	261116	Spring — Choke Return	1
634	270382	Washer — Choke Shaft	1
662	222311	Bracket — Carburetor	1
663	93572	Screw	1
726	392134	Gear Ring (Incl. Mtg. Parts)	1
727	490324	Cover — Starter (Includes Mounting Screws)	1
728	93535	Screw — Sem	1
872	223700	Cover — Air Cleaner	1
875	490332	Body — Air Cleaner	1
877	393537	Connector Assembly	1
883	270917	Gasket — Exhaust Pipe	1
917	223271	Valve Handle — Fuel Shut-Off	1
987	398970	Seal — Throttle Shaft	1

\* Included in Gasket Set Part No. 490525.

† Included in Carburetor Overhaul Kit — Part No. 394698.



## ENGINE BRIGGS & STRATTON MODEL 281707-0165-01 (Continued)

Ref. No.	Part No.	Description	No. Used
309	490420	Motor & Drive Assembly	1
310	94004	Thru Bolt Assembly	2
311	395538	Brush Assembly	1
510	490421	Drive Assy. (Incl. Ref. #513)	1
513	398003	Clutch Assembly	1
544	391160	Armature Assembly	1
783	280104	Gear	1

Ref. No.	Part No.	Description	No. Used
801	394857	End Cap Assembly Drive	1
802	395537	End Cap Assy. Commutator (Incl. Ref. #311)	1
803	394544	Housing Assembly	1
876	490467	Retainer Kit	1
896	94288	Roll Pin	1