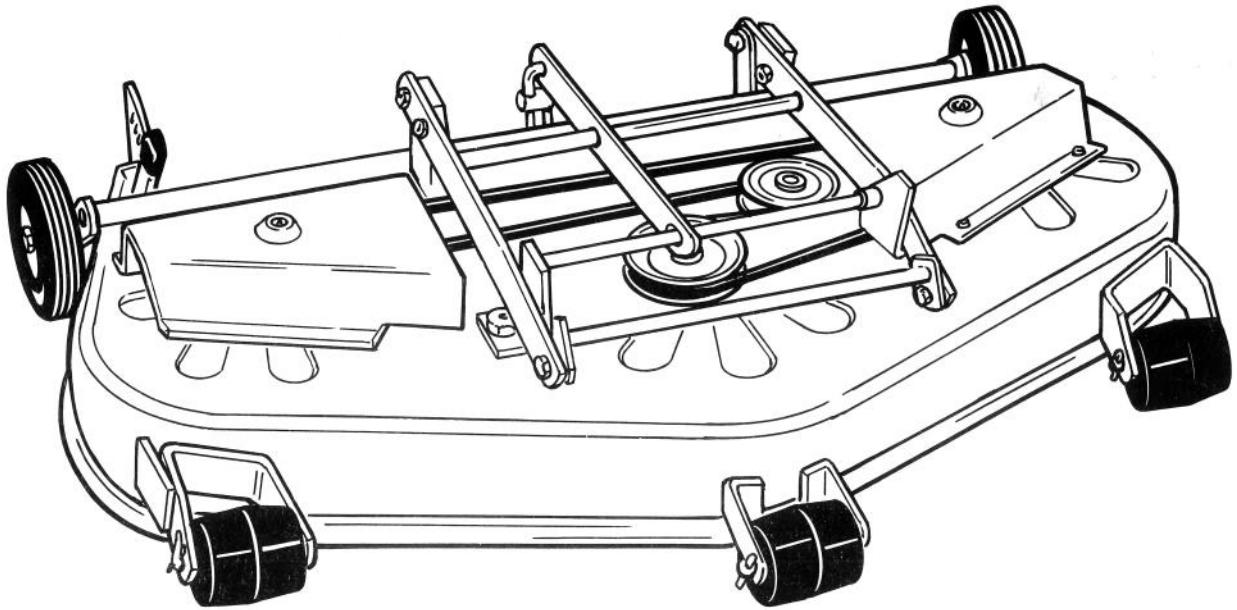
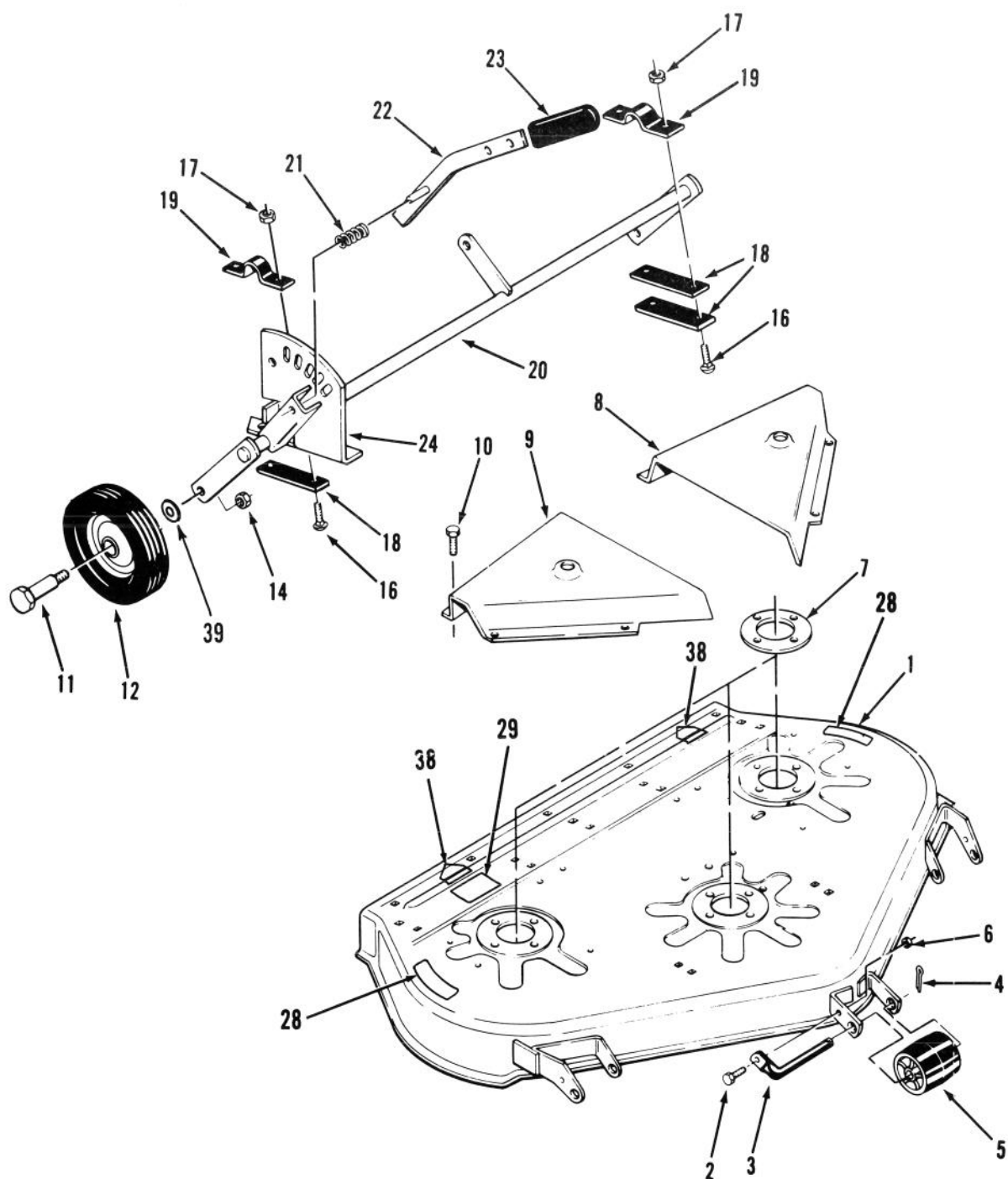


**TORO®**MODEL NO. D542MR01-2000001  
& UP**PARTS  
CATALOG****WHEEL HORSE®**  
42" (107 cm) Rear Discharge Mower

# DECK ASSEMBLY

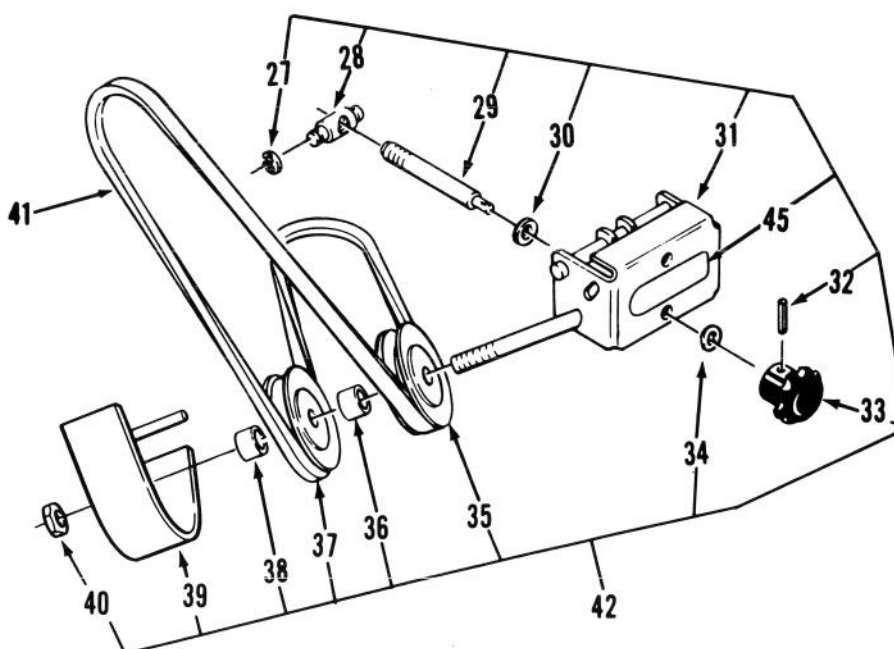
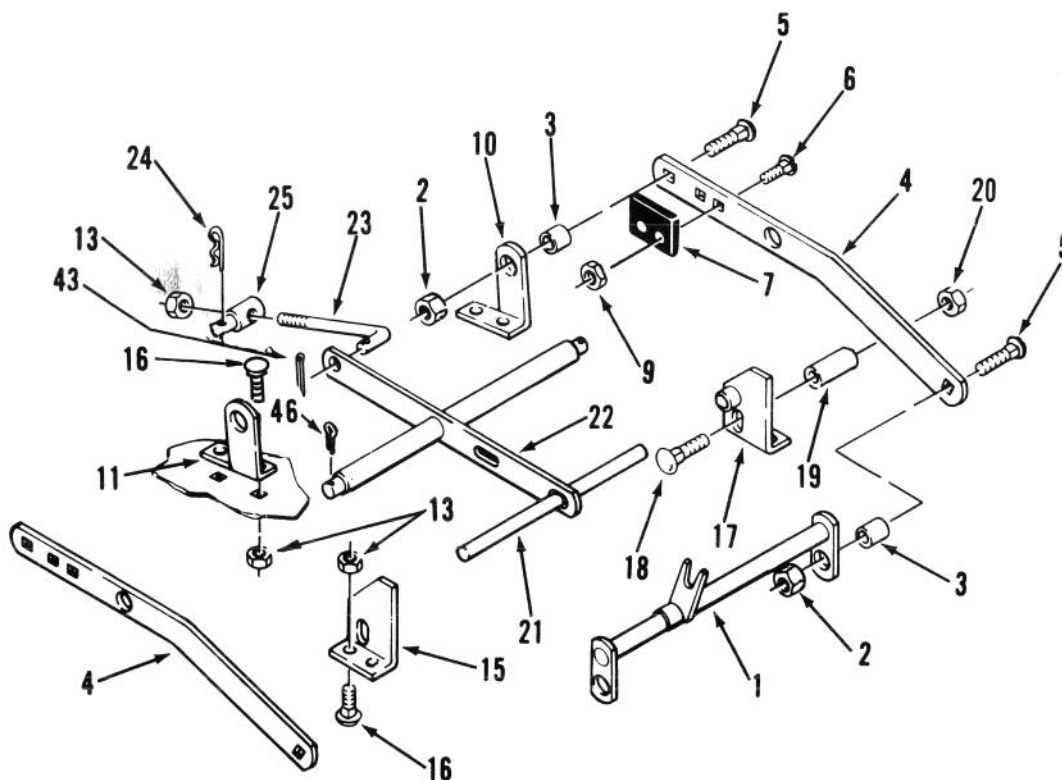


# DECK ASSEMBLY

Ref. No.	Part No.	Description	No. Used
1	116965	Deck - Mower	1
2	321-4	Screw - Cap Hex. Hd.	3
3	110847	Shaft - Roller	3
4	3272-21	Pin - Cotter	3
5	109376	Roller	3
6	3296-42	Nut - Lock	3
7	106117	Plate - Spindle	3
8	106638	Cover - Belt, LH	1
9	106409	Cover - Belt, RH	1
10	926671	S.T. Bolt	8
11	5188	Bolt - Shoulder	2
12	109375	Wheel	2
14	3217-7	Nut - Jam	4
16	3231-25	Bolt - Carriage	4

Ref. No.	Part No.	Description	No. Used
17	3296-39	Nut - Lock	4
18	110840	Strap	3
19	110841	Clamp	2
20	115053	Support - Gage Wheel	1
21	101853	Spring	1
22	115213	Lever	1
23	103712	Grip	1
24	106392	Quadrant	1
28	76-4070	Decal - Danger	2
29	106748	Decal - Height Adj. & Belt Routing Diagram	1
38	43-8480	Decal - Danger	2
39	920242	Washer	2

# BRACKETS AND IDLER SUPPORT ASSEMBLY

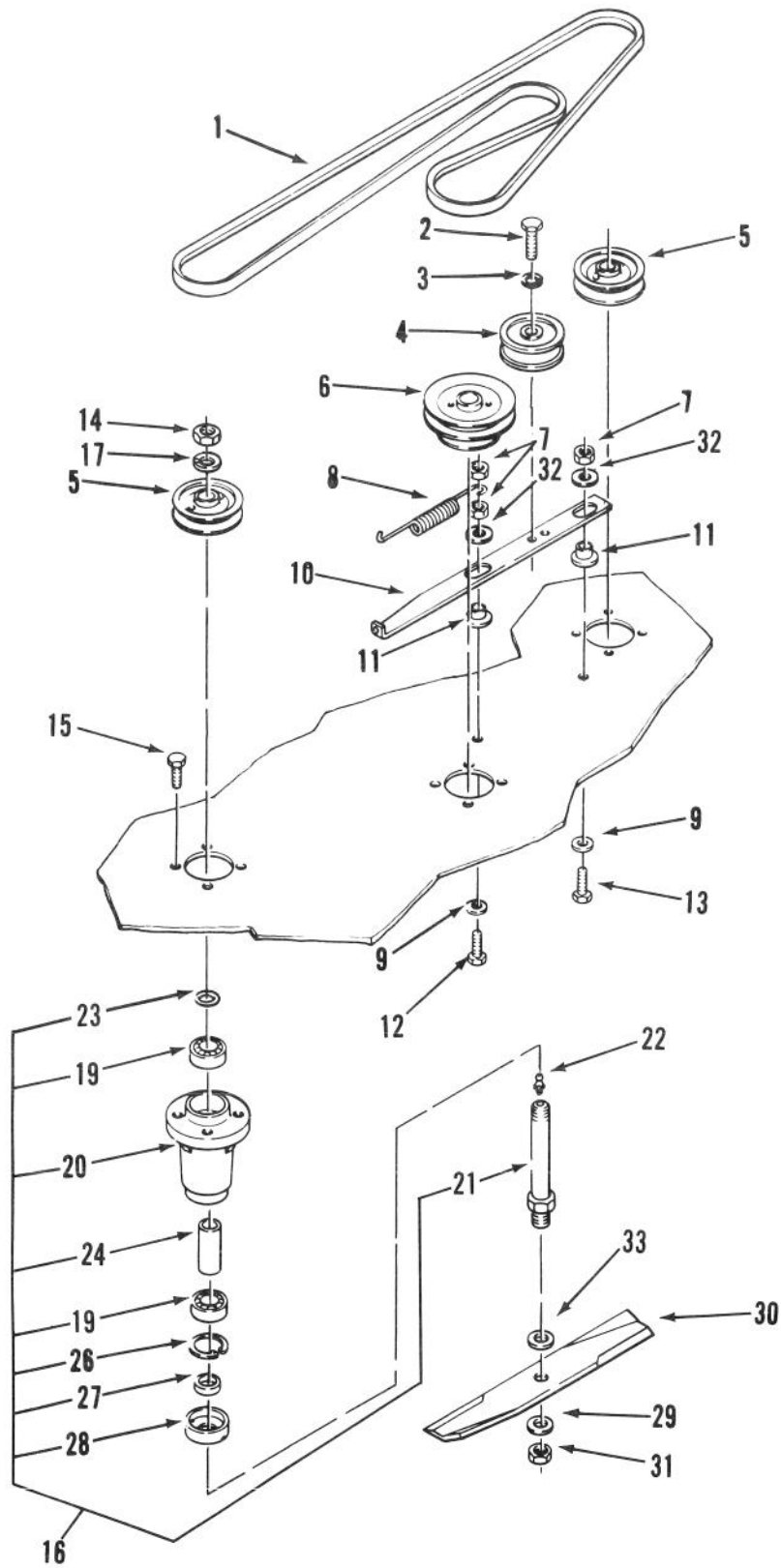


# BRACKETS AND IDLER SUPPORT ASSEMBLY

Ref. No.	Part No.	Description	No. Used
1	101758	Hitch	1
2	102809	Nut - Flange	4
3	111044	Spacer	4
4	101777	Bar - Draft	2
5	3231-25	Carriage Bolt	4
6	3230-3	Carriage Bolt	4
7	102322	Bumper - Rubber	2
9	3296-29	Nut - Lock	4
10	107511	Bracket - Rear, LH	1
11	107512	Bracket - Rear, RH	1
13	3296-39	Nut - Lock	9
15	102566	Bracket - Front, RH	1
16	3231-2	Carriage - Bolt	8
17	102567	Bracket - Front, LH	1
18	3232-3	Carriage Bolt	2
19	979360	Spacer - Transport Stop	2
20	915664	Nut	2
21	102570	Shaft - Front	1
22	110268	Leveler	1
23	101828	Rod - Adjusting, Leveler	1
24	933504	Pin - Cotter, Hair	2

Ref. No.	Part No.	Description	No. Used
25	6739	Trunnion	1
27	105797	E-Ring	2
28	101708	Trunnion - Double	1
29	101842	Rod - Adjustment	1
30	3256-24	Washer - Flat	1
31	101728	Support - Idler, Front	1
32	933156	Pin - Spirol	1
33	101851	Knob - Adjustment	1
34	108571	Washer - Spring	1
35	104974	Pulley - 'V' - Idler	1
36	101734	Spacer - Inner	1
37	104975	Pulley - Idler, Flat	1
38	101757	Spacer - Outer	1
39	102582	Cover - Belt	1
40	915007	Nut - Lock	1
41	108834	Belt - Drive	1
42	101657	Assembly - Idler, Front (Incl. Ref. #27 - 40 & 45)	1
43	3272-6	Pin - Cotter	1
45	115197	Decal - Attach-a-Matic	1
46	3272-12	Pin - Cotter	2

# PULLEYS AND BELT ASSEMBLY



# PULLEYS AND BELT ASSEMBLY

Ref. No.	Part No.	Description	No. Used
1	106125	Spindle - Belt	1
2	323-7	Screw - Cap Hex. Hd.	1
3	3253-21	Washer - Lock	1
4	112425	Pulley - Idler, Flat	1
5	109967	Pulley - Left or Right	2
6	110148	Pulley - Center	1
7	3296-39	Nut - Lock	3
8	100071	Spring	1
9	2844	Washer - Special	2
10	106120	Bar - Support, Idler	1
11	107674	Spacer - Bushing	2
12	323-9	Screw - Cap Hex. Hd.	1
13	323-7	Screw - Cap Hex. Hd.	1
14	3220-6	Nut - Jam	3
15	323-4	Screw - Cap Hex. Hd.	12
16	822327	Assembly - Spindle	3

Ref. No.	Part No.	Description	No. Used
17	3253-8	Washer - Lock	3
19	109966	Bearing - Ball	6
20	114568	Housing - Spindle	3
21	112674	Shaft - Spindle	3
22	302-5	Fitting - Grease	3
23	971015	O-Ring	3
24	116085	Spacer	3
26	32120-42	Snap Ring - Internal	3
27	106068	Spacer - Blade	3
28	106067	Cup - Spindle	3
29	3256-28	Washer - Special	3
30	106108	Blade - Mower	1
31	3220-7	Nut - Jam	3
32	107675	Washer - Special	2
33	920257	Washer - Special	3
*	114647	Wrench - Spindle	1

\*Not Illustrated

## MAINTENANCE RECORD

[illegible]