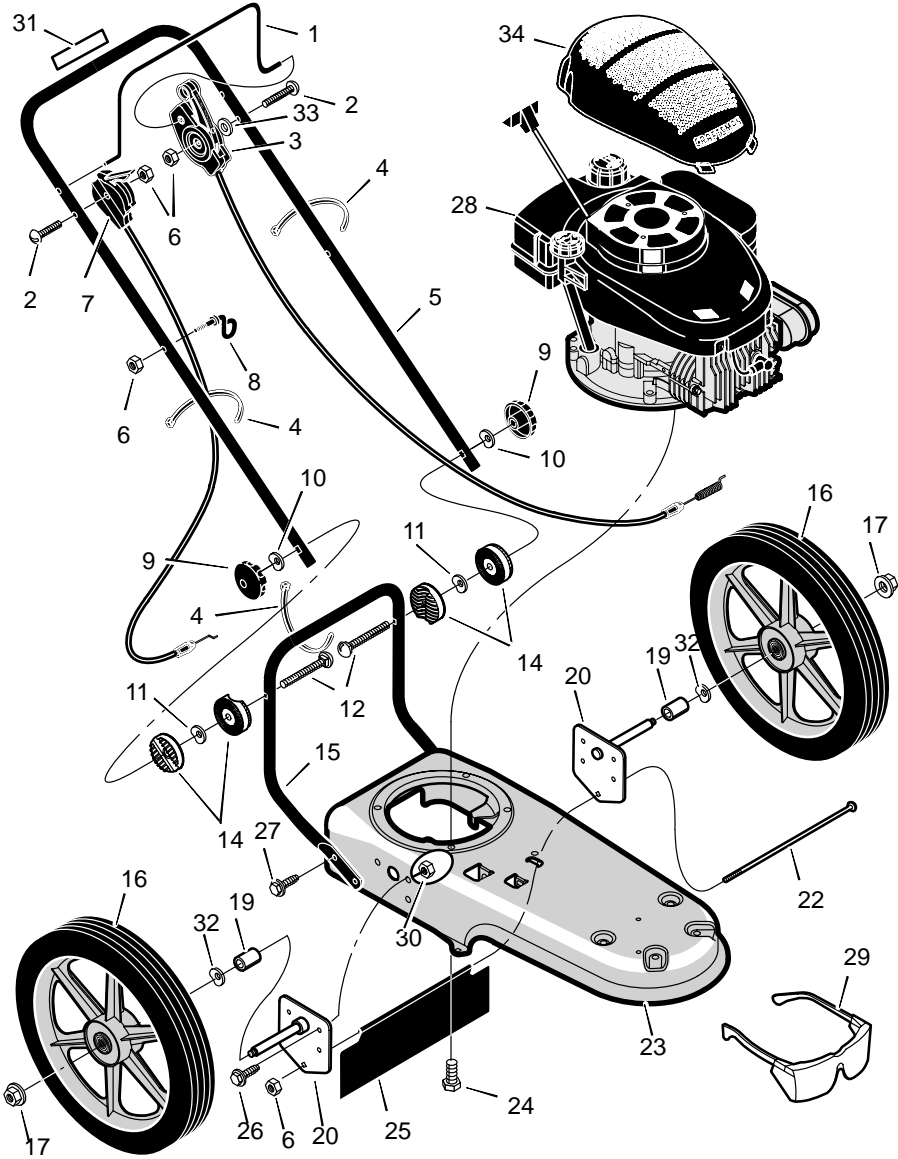


# **POWERTRIM**

---

**Code 407S**

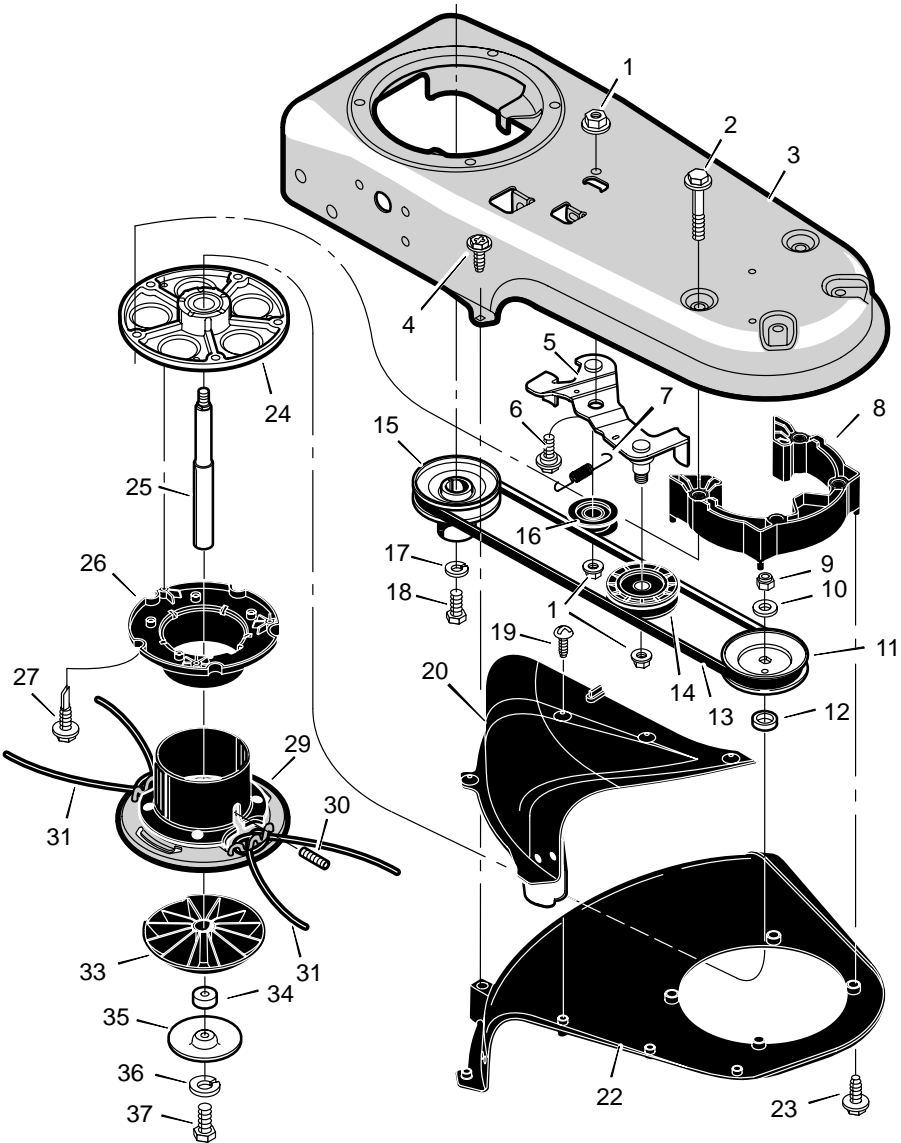
## **OWNER'S HANDBOOK**



## Code 407S

## REPAIR PARTS

Key No.	Description	Part No.
1	Lever, Stop	MU740198-848
2	Bolt	MU323035
3	Cable, Control Latching	MU740193
4	Tie, Cable	MU712267
5	Handlebar	MU740196
6	Nut	MU710203
7	Control, Throttle	MU740194
8	Guide, Rope	MU672510
9	Knob, Handlebar	MU740202
10	Washer	MU783000
11	Washer, Spring	MU711936
12	Bolt	MU711937
14	Pivot, Handlebar	MU740158
15	Handlebar, Lower	MU740195
16	Wheel & Tire	MU740185
17	Nut, Axle	MU15x84
18	Washer	MU20x3
19	Spacer	MU740190
20	Assembly, Axle & Bracket	MU740188
22	Bolt, Carriage	MU711935
23	Deck	MU740150-848
24	Bolt	MU710265
25	Shield, Trailing	MU740192
26	Bolt	MU48901
27	Screw	MU26x274
28	Engine	-----
29	Protection, Eye	MU711890
30	Nut	MU15x88
31	Decal, Engine Stop	MU712409
32	Washer, Spring	MU20x3
33	Spacer, PM .26x.5x.2	MU672292
34	Shroud, Engine (Optional)	MU1601001
--	Decal, Powertrim (not shown)	MU713004
--	Decal, Hayter (not shown)	MU712416
--	Decal, Warning (not shown)	MU713006
--	Instruction Book & Parts List	MUF-030203L



## Code 407S

## REPAIR PARTS

Key No.	Description	Part No.
1	Nut	MU15x84
2	Bolt	MU711978
3	Deck	MU740150-848
4	Screw	MU710272
5	Idler Assembly	MU740232
6	Bolt	MU710200
7	Spring	MU712403
8	Spacer	MU740292
9	Nut	MU712148
10	Washer	MU710083
11	Pulley, Cutting Head	MU740171
12	Spacer	MU740173
13	Belt	MU711933
14	Pulley, Idler	MU740244
15	Pulley, Engine	MU740179
16	Pulley, Idler	MU740183
17	Lockwasher	MU712147
18	Bolt	MU712146
19	Screw	MU26X235
20	Guard Assembly	MU770070
22	Guard	MU740206
23	Screw	MU26x294
24	Jackshaft Housing Assembly	MU01001049
25	Jackshaft	MU740169
26	Wrap, Upper Head	MU740163
27	Screw	MU712126
29	Assembly, Cutting Disc	MU740175-848
30	Screw, Set	MU712127
31	Line, Cutting	MU740164
33	Guide, Height	MU740157
34	Spacer	MU740210
35	Shield, Abrasion	MU740209
36	Lockwasher	MU120380
37	Bolt	MU180022

# NOTES

# NOTES

## How To Order Replacement Parts

Use only manufacturer's authorised or approved replacement parts. The letter placed on the end of the part number denotes the type of finish for the part, C for chrome, Z for zinc, a PA for purchased assembly. It is important that you include this when ordering a part. Do not use attachments or accessories not specifically recommended for this unit. In order to obtain proper replacement parts you must supply the model number of your machine (see serial number).

Replacement parts, except for the engine, transmission, transaxle or differential, are available from your local **Hayter** authorised dealer, the store where the mower was purchased or a service shop recommended by the store.

If you are unable to obtain parts or service in the manner outlined above, then contact:

**HAYTER LIMITED,**  
Service Department,  
Spellbrook,  
Bishop's Stortford,  
Hertfordshire. CM23 4BU

When ordering the following information is required:

- (1) The Model Number
- (2) Serial Number
- (3) Part Number
- (4) Quantity