



# HAYTER

FROM MACHINE NUMBER 256 744  
CODES  
284 - Hayterette Professional with Cutterblades.  
285 - Hayterette Professional with Cutterbar.  
254 - Hayterette Professional 2/Stroke Suzuki with  
Cutterbar.

**Instruction and Spare Parts Book**

TECHNICAL  
FILE  
DOCUMENT

# **HAYTER HAYTERETTE PROFESSIONAL MODEL**

**BRIGGS & STRATTON FOUR-STROKE ENGINE**

---

**HAYTERS LTD**

**BISHOP'S STORTFORD · HERTS · ENGLAND · CM23 4BU**

## INTRODUCTION

The Hayterette is robustly constructed and designed to give an efficient, economical performance, combined with ease of operation. The correct operation and attention to routine maintenance as recommended will ensure long and efficient service from the machine. It is important that the machine is not abused or neglected.

The machine is carefully checked at our works prior to despatch and every effort is made by Hayters to see that the machine arrives in perfect condition. Your dealer will ensure this on delivery. It is recommended that you permit the dealer to go through the operating instructions with you.

Due to the possible settling in of new components, it is essential that after a short period of use all securing nuts, particularly blade securing nuts, be checked and tightened if necessary.

## GUARANTEE

The machine is guaranteed against faulty workmanship or materials for a period of 12 months from the date of purchase. In the case of components not manufactured by Hayters Ltd., no guarantee is given but a purchaser shall be entitled to the benefit of any guarantee given by the manufacturers of such components. Any claim under guarantee should be referred to the Hayter Agent through whom the machine was originally supplied, quoting the machine Serial Number which is located on the top of the mainframe at the rear of the machine.

The guarantee becomes void if any parts not made or supplied by Hayters are fitted to the machine. In the case of machines being used for hiring out purposes no guarantee of any kind is given or is to be implied.

## ASSEMBLY INSTRUCTIONS

Pivot the upper handlebar, until it is in line with the lower handlebar, and securely tighten the handlebar clamp plate nut ensuring that the inner and outer clamp plates are properly seated on the handlebar tube.

## OPERATING INSTRUCTIONS

See the engine manufacturers' handbook and carefully carry out the recommendations for starting the engine, ensuring that the engine sump is filled with one of the recommended grades of lubricating oils. It is most important that oil other than those grades recommended should not be used in this engine. See recommended lubrication chart affixed to front of engine.

When starting the engine the throttle control lever should be set in the 'CHOKE' position.

The engine is governed to run at the maximum speed of 3,000 r.p.m. and this speed is obtained by setting the throttle control lever in the 'FAST' position.

Engine speed must be measured against the crop condition, for example, when cutting well-maintained lawn areas, the engine may be run at a lower speed by means of the throttle control, but where long or neglected areas are to be cut and maximum power is required the throttle control must be in the 'FAST' position.

Should any adjustments be made to the engine it is essential that the maximum governed speed of 3,000 r.p.m. is strictly adhered to.

## Cutting height adjustment

The cutting height range is from  $\frac{1}{2}$ " to  $2\frac{3}{4}$ " with six settings each of which gives approximately  $\frac{3}{8}$ " adjustment.

To increase the height of cut the height adjusting lever must be moved towards the rear of the machine until the desired cutting height is obtained.

## HINTS ON OPERATION

When cutting very thick or long grass for the first time it is advisable to make two cuts – initially with the cutting height set at the maximum of  $2\frac{3}{4}$ " and secondly at the required height.

If a heavy or immovable obstruction is encountered, the attention of the user is immediately drawn to the fact by the frictional noise which is set up, in which case the machine should be drawn backwards without raising the front. The engine should then be stopped and plug lead disconnected. Examine the bottom plate to ensure that all cutter blades are properly seated and undamaged. The Hayterette is designed to cut almost to ground level on reasonably flat surfaces, but where stony or bumpy conditions are encountered it is strongly recommended that the cutting height is adjusted to avoid the danger of stones being ejected from the machine.

## MAINTENANCE

### Lubrication

Apart from the engine the only lubrication required is a small amount of oil to the hinge points of the cutter-blades, to the linkage points of the height adjusting connecting rods, and to the outer casing of the throttle control cable; it is recommended that a light application of oil is made to the outer casing along its entire length, it will then seep through the casing to the throttle control cable. Any surplus oil should then be wiped clean. Use a good quality light oil.

### Wheels

Remove hub cap, fill with light grease and replace, thus



forcing grease into bearing.

### Cleaning

For cleaning purposes the machine may be turned on its side, but only with the silencer uppermost, and it is advisable to do this when the petrol tank is nearly empty otherwise spillage will occur. Always disconnect the spark plug lead before turning the machine on its side.

### Engine

See engine manufacturer's handbook and carefully carry out the recommended instructions, paying particular attention to the lubricating instructions. Cover up the machine when not in use.

Use of an upper cylinder lubricant is recommended where the machine is infrequently used and also towards the end of the season before Winter storage. When storing the machine, disconnect spark plug lead, and remove the spark plug. Insert a small quantity of oil into the cylinder and turn the engine a few times to distribute the oil. Replace the spark plug, ensuring that the piston is at the top of its compression stroke and that both the inlet and exhaust valves are closed.

### Front wheel bearing adjustment

Should the wheels become slack on the bearings they may be adjusted by removing the hub cap and carefully turn the nut in a clockwise direction until the slackness is taken up. It is important to avoid over-tightening of the nut which would result in premature bearing failure.

### Securing nuts and bolts

It is essential that all securing nuts and bolts are examined periodically and tightened if necessary.

### Cutterblades

Hayter balanced 'C' type cranked blades are fitted to this machine and are designed to swing on the shoulder of the hinge bolt when encountering a fixed object, being held out by centrifugal force when in operation. Keep blades sharp and ensure that they are correctly secured.

It is essential to inspect the cutting mechanism regularly, especially when operating over rough or stony ground, and should a blade be broken or missing it should be replaced immediately. Should replacements not be readily at hand, the corresponding part diagonally opposite should be removed to maintain the perfect balance of the bottom plate.

When changing blades, ensure that they are fitted exactly as shown in Fig. 1.

The hinge bolt must be securely fixed to the bottom

plate; make sure the nut is securely tightened. The blade should then be free to swing on the shoulder of the hinge bolt. Under no circumstances should the machine be operated with any of the blade bolts loose. Access to the blade securing nuts is obtained by lifting the rear flap.

Disconnect the plug lead before fitting cutterblades or checking the cutting mechanism.

### SAFETY PRECAUTIONS (As recommended in B.S.5107:1974)

- Warning: Blades continue to rotate after machine is switched off.
- Know your controls. Read the owner's manual carefully. Learn how to stop the engine quickly in any emergency.
- Make sure the lawn is clear of sticks, stones, bones, wire and debris. They could be thrown by the blade.
- Stop the engine and disconnect spark plug wire before checking or working on the mower.
- Damaged blades and worn bolts are major hazards. Before using, always visually inspect to see that blades, blade bolts and cutter assembly are not worn or damaged. Replace worn or damaged blades together with their fixings in sets to preserve balance. Use only Hayter balanced 'C' blades and Hayter blade fixing bolts, nuts and washers.
- Always be sure the mower is in safe operating condition. Check all nuts, bolts and screws often. Use only replacement parts made and guaranteed by Hayters Ltd.
- Add fuel BEFORE starting the engine. Avoid spilling petrol and do not fill the tank while the engine is running or while you are smoking.
- Do not mow whilst people, especially children, or pets are in the mowing area.
- Never use the mower unless the rear flap is fitted. Do not lift flap whilst mower is operating.
- Do not mow barefoot or in open sandals.
- Start the engine carefully with feet well away from the blades.
- Do not operate the engine in a confined space where exhaust fumes (carbon monoxide) can collect.
- Stop the engine whenever you leave the mower.
- Stop the engine before pushing the mower across gravel drives, walks or roads.
- Do not allow children or people unfamiliar with these instructions to use the mower.
- On slopes or wet grass, be extra careful of your footing.
- Never cut grass by pulling the mower towards you.
- Do not overspeed the engine or alter governor settings. Excessive speed is dangerous and shortens mower life.
- Store fuel in a cool place in a container specifically designed for the purpose. In general, plastic containers are unsuitable.
- Never pick up or carry a mower when it is operating.

The Hayterette is perfectly safe if used correctly. Failure to observe these simple precautions may result in serious injury.

CODE 284

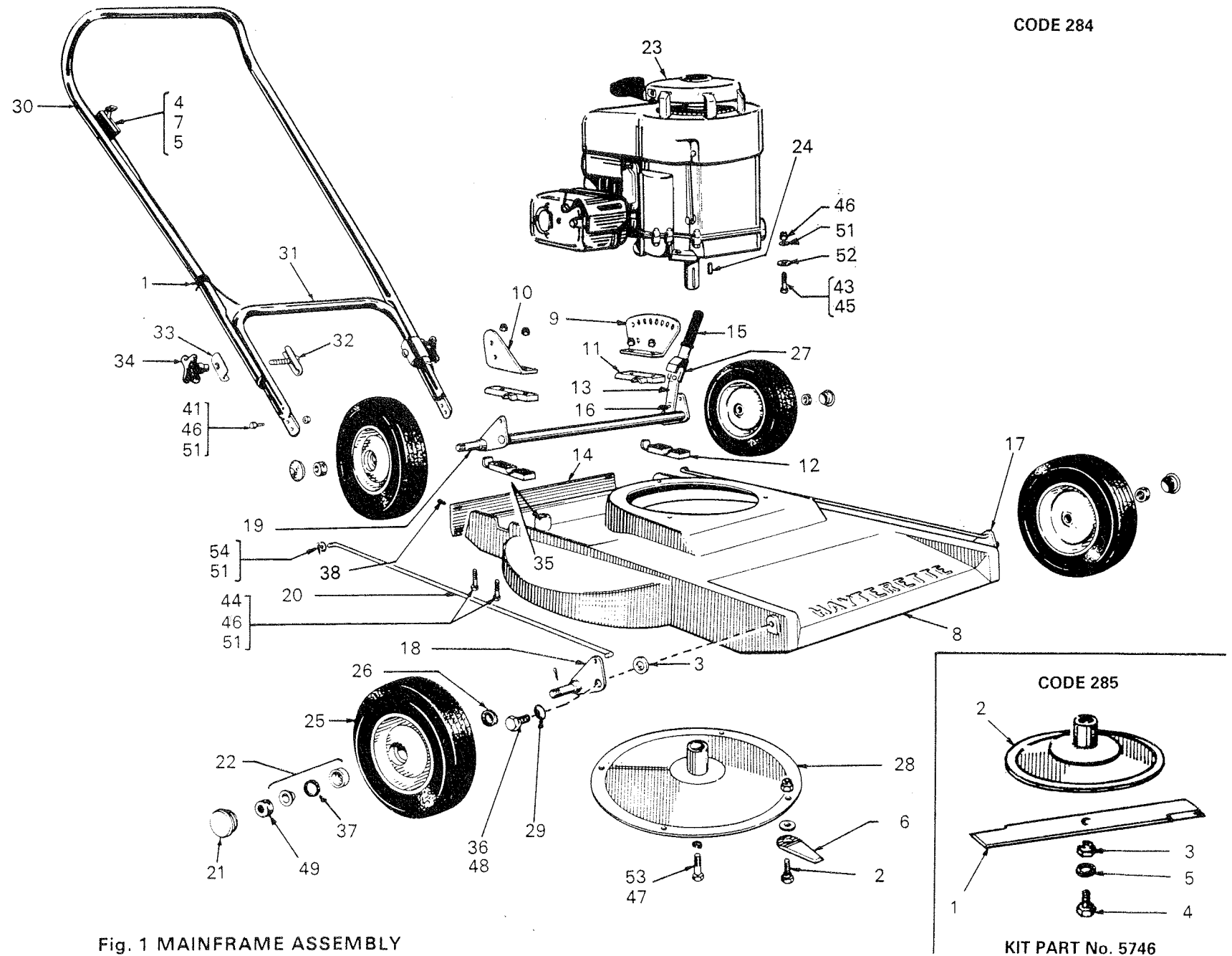


Fig. 1 MAINFRAME ASSEMBLY

**SPARE PARTS LIST**

(Subject to revision without notice)

**FROM MACHINE NUMBER 256 744**

All spares must be ordered through an authorised Hayter Agent.

When ordering spares please quote the SERIAL NUMBER of your machine and the PART NUMBER, not the ITEM NUMBER, of the required part.

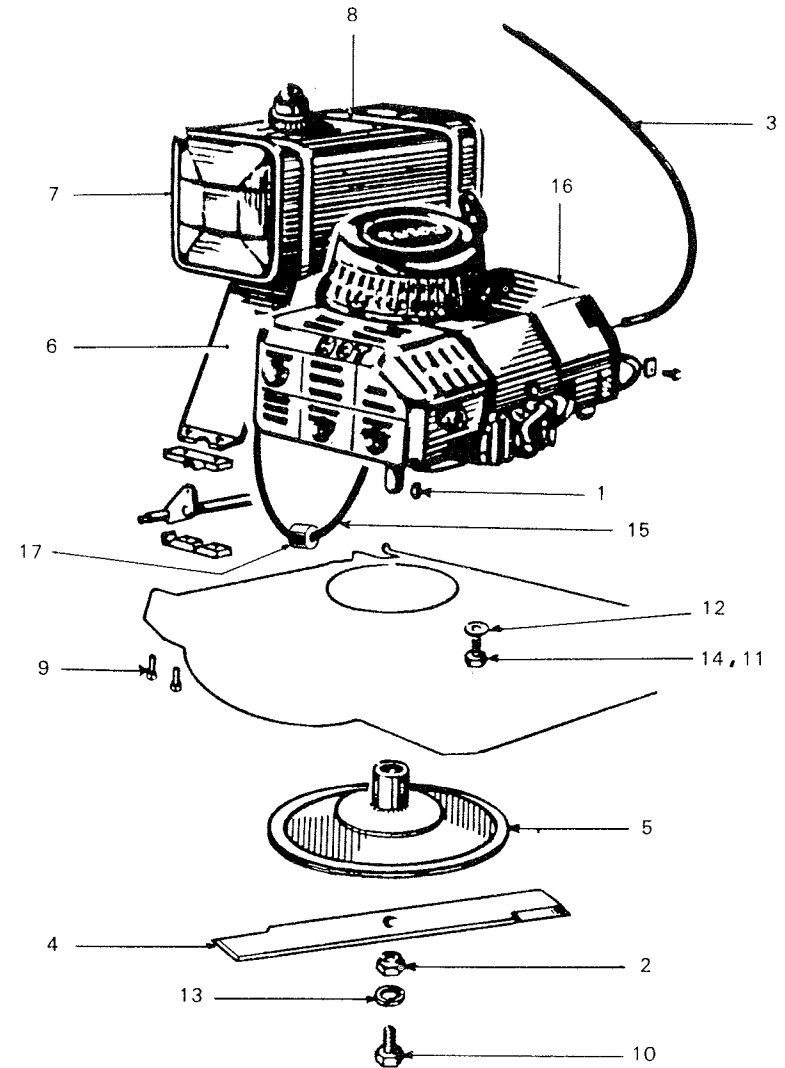
**HAYTERETTE PROFESSIONAL WITH CUTTERBAR  
(CODE 285) Kit Part No. 5746**

Item No.	Part No.	No. Off	DESCRIPTION
1	5637	1	18" Cutterbar
2	4510	1	Friction Disc Assy.
3	4014	1	Distance Piece
4	09116	1	3/8" UNF x 1 1/4" Set Screw
5	09273	1	3/8" Spring Washer S/C

Item No.	Part No.	No. Off	DESCRIPTION	Item No.	Part No.	No. Off	DESCRIPTION
			<b>MAINFRAME ASSEMBLY</b>	30	5649	1	Handlebar Upper
1	363	1	Cable clip	31	4916	1	Handlebar Lower
2	590	1	Blade Bolt , Nut & Washers Set (4)	32	5662	2	Inner Clamp Plate
3	02394	2	Washer	33	5651	2	Outer Clamp Plate
4	6253	1	Throttle Control and Cable	34	226013	2	Clamp Nut
5	5631	1	Mounting Block	35	5186	1	Blanking Plug
6	2779	1	Cutterblade 'C' Type Set (4)	36	6341	2	Axle Plate Securing Bolt
7	09358	2	Self Threading Screw				
8	3607	1	Mainframe Casting	37	5206	A/R	Caged Ball Race
9	3617	1	Quadrant and Handlebar Bracket	38	6289	2	Stop
10	3618	1	Handle Bracket	39			
11	3619	2	Upper Bearing Block	40			
12	3620	2	Lower Bearing Block	41	09070	6	3/4" x 5/16" UNF. Setscrew
13	6311	1	Spring Handle	42			
14	3623	1	Rear Flap	43	09080	4	1 1/2" x 5/16" UNF. Bolt
15	4097	1	Handle Grip	44	09086	4	1 3/4" x 5/16" UNF. Bolt
16	09272	2	Rivet	45	09083	1	1 5/8" x 5/16" UNF. Bolt (Full Dog Point)
17	6358	1	Front Axle Plate with Nut N/S				
18	6359	1	Front Axle Plate with Nut O/S	46	09209	10	5/16" UNF. Nyloc Nut
19	6357	1	Rear Axle Assembly	47	09114	1	1" x 3/8" UNF. Setscrew
20	4210	2	Connecting Rods	48	09216	2	3/8" UNF. Nyloc Nut
21	4932	4	Hub Cap	49	09232	4	1/2" UNF. Nylon Nut Thin
22	4933	8	Cone Cup and Race	50			
23	284002	1	Briggs & Stratton Engine Spec. No. 132922	51	09266	10	5/16" x 5/8" O/D Washer
				52	09267	6	5/16" x Large O/D Washer
24	04522	1	Key	53	09273	1	3/8" S/C Spring Washer
25	4928	4	Wheel with Bearing Assembly	54	09303	4	1/2" x 3/32" Split Pin
26	4931	4	Back Cover				
27	4884	1	Spring Handle Retaining Clip				<b>TOOLS</b>
28	4905	1	Bottom Plate		367	1	Spanner 1/2" x 9/16" A/F D.E.
29	4912	2	Disc Spring		4034	1	Plug and Blade Spanner

**CODE 254 HAYTERETTE PROFESSIONAL  
WITH 2-STROKE SUZUKI ENGINE  
AND CUTTERBAR**

Item No.	Part No.	No. Off	DESCRIPTION
1	1662	1	Woodruff Key
2	4014	1	Distance Piece
3	5607	1	Throttle Control
4	5637	1	18" Cutterbar
5	6164	1	Friction Disc. Assy.
6	6260	2	Fuel Tank Bracket
7	6261	1	Fuel Tank Assy.
8	6265	2	Fuel Tank Strap
9	9088	4	5/16" UNF x 2" Bolt
10	9116	1	3/8" UNF. x 1 1/4" Aetscrew
11	9210	3	3/8" UNC. Plain Nut
12	9271	4	3/8" x 3/4" Plain Washer
13	9273	1	3/8" Spring Washer S/C
14	103653	3	3/8" UNC. x 1" Setscrew
15	200321	1	Fuel Pipe
16	254002	1	Engine Suzuki – M120 x 3.7 HP 2-Stroke
17	200319	1	Fuel Line Filter



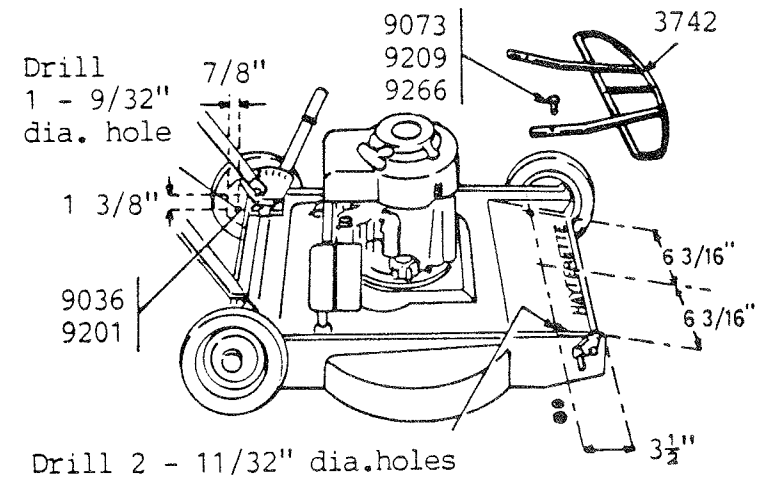
## THE AGRICULTURAL (FIELD MACHINERY) REGULATIONS 1962

Under the above regulations all Hayter Mowers purchased for use in Agriculture from the 1st July, 1964, must be fitted with guards to comply with the Act.

Machines in use prior to 1st July, 1964, must have been fitted with guards by the 1st January, 1967.

One set of guards for the Hayter 18in. Hayterette comprises:

- 1 - 3742 - Front Guard Rail
- 2 - 9073 - 1" x 5/16" UNF Setscrew
- 2 - 9209 - 5/16" UNF Nyloc Nut
- 2 - 9266 - 5/16" x 5/8" O/D Washer
- 1 - 9036 - 1/2" x 1/4" UNF Setscrew
- 1 - 9201 - 1/4" UNF Locknut



Details of the drilling required to  
the mainframe casting for fitting the  
front guard and rear flap stop

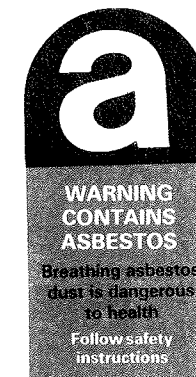
## WARNING NOTICE

(Issued in accordance with Asbestos Products (Safety) Regulations 1986)  
Certain components on this Mower, such as brake and clutch linings and  
some gaskets and joints, may contain a small quantity of asbestos.

When repairing and replacing these items care should be taken to:-

- 1) Carry out the repairs in a well ventilated area.
- 2) Remove dust by dampening down using a recommended liquid or water.
- 3) Dampen dust and place it in a properly closed receptacle.
- 4) Dispose of the receptacle safely.

If you are uncertain seek advice from your dealer.



PART NUMBER, 5948