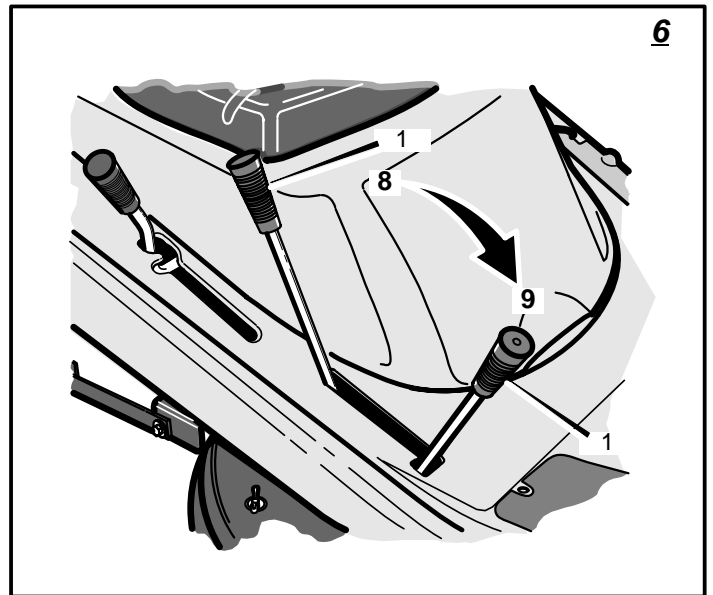
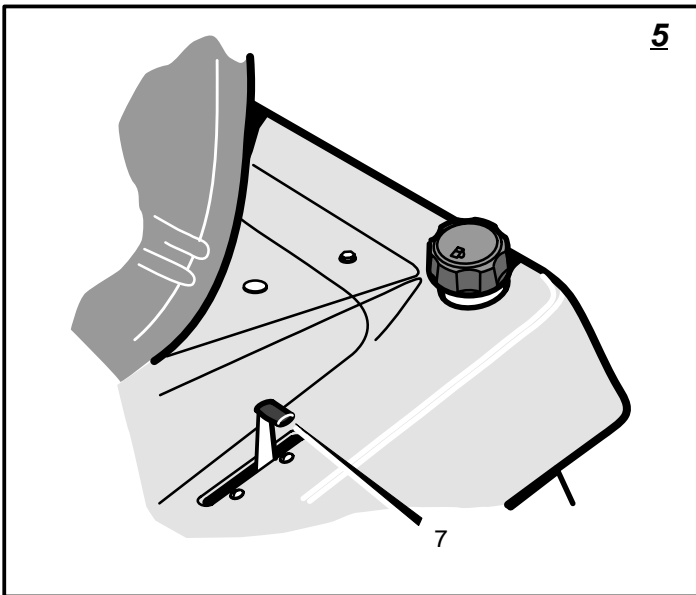
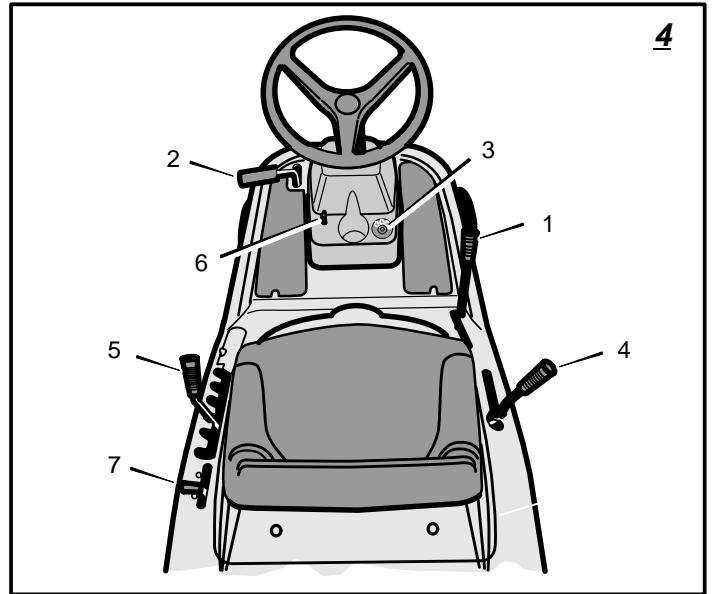
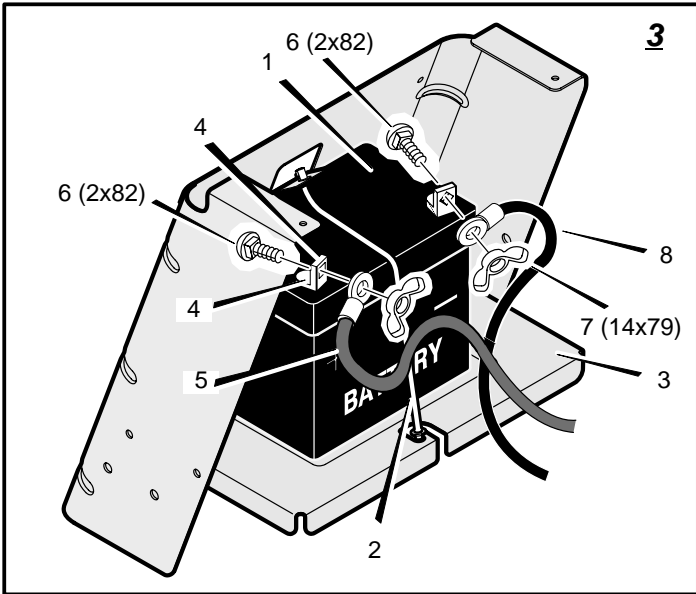
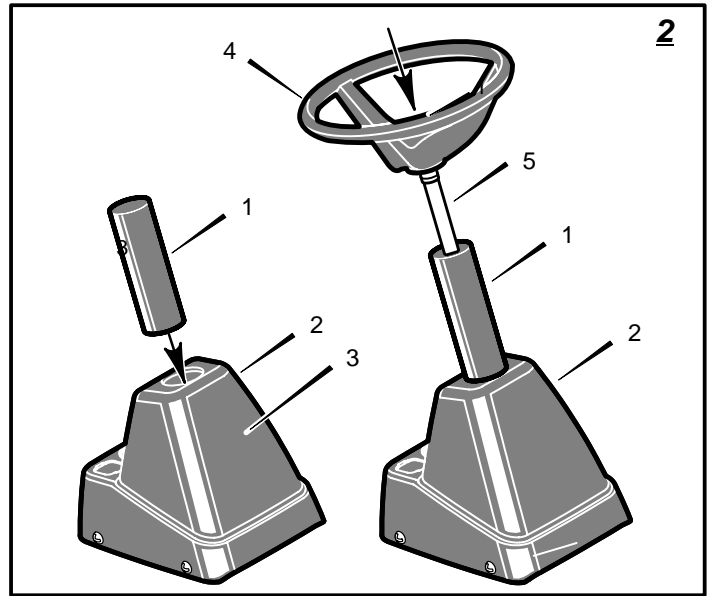
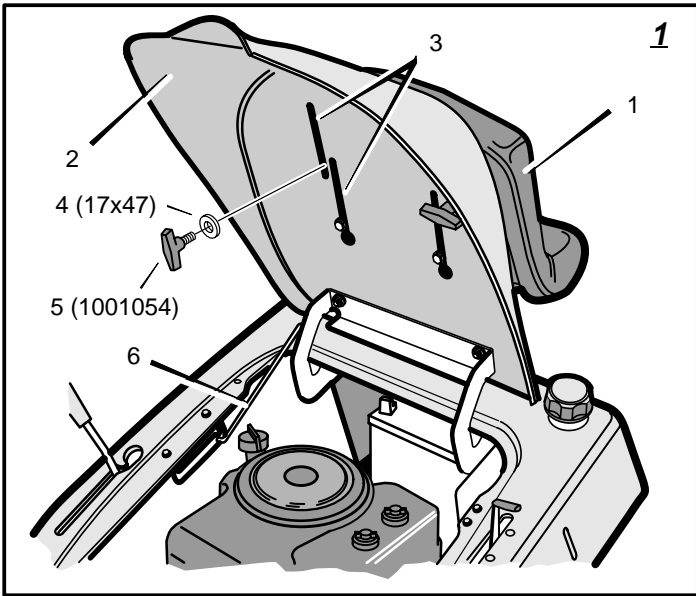
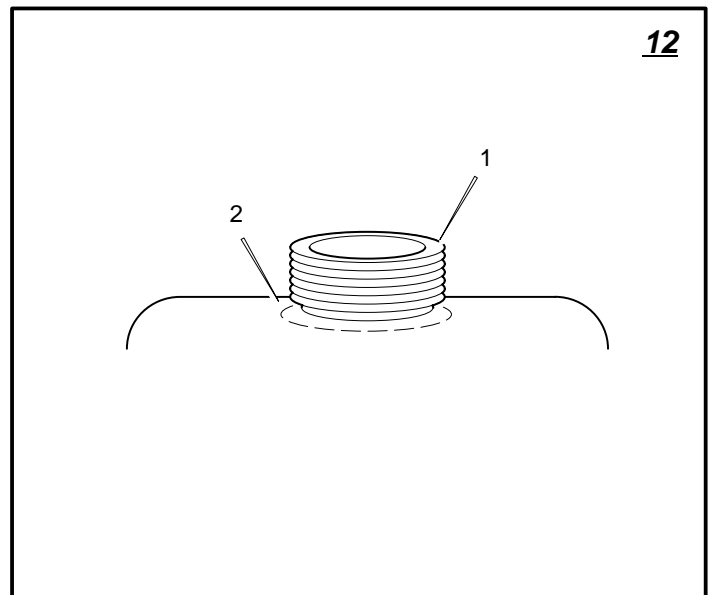
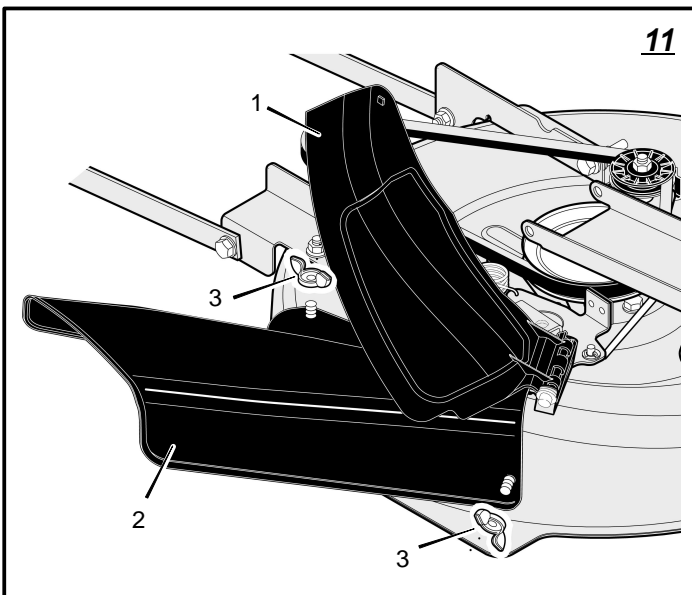
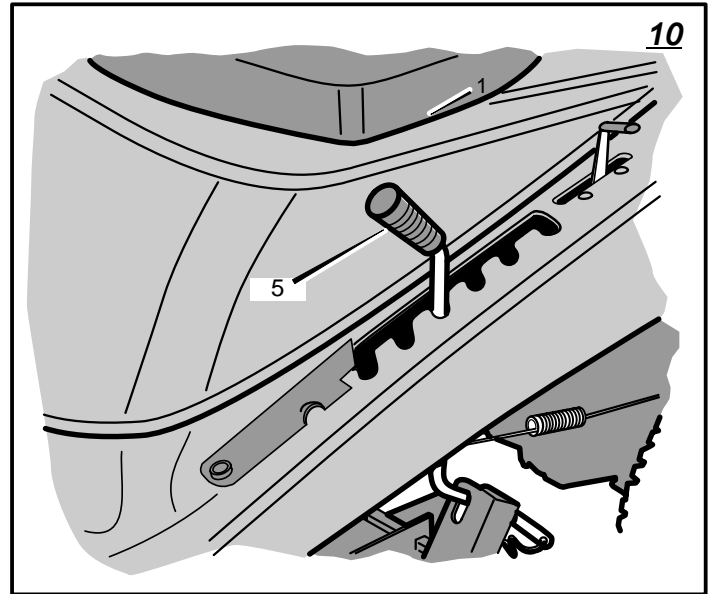
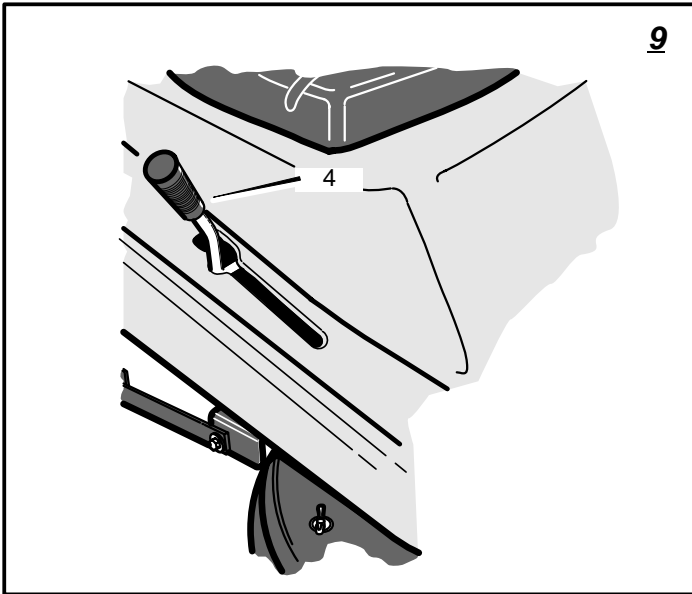
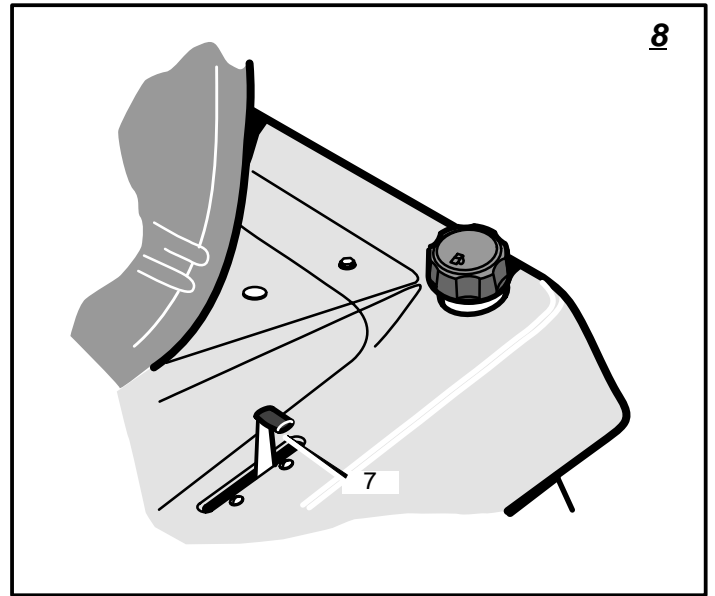
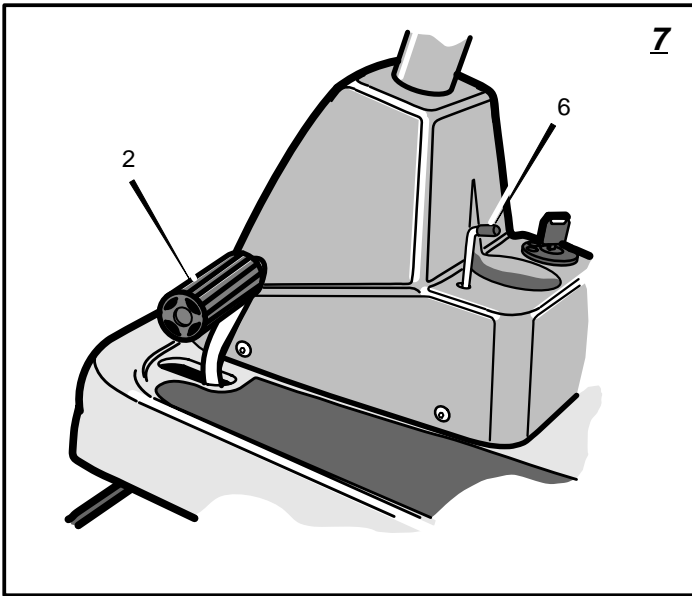


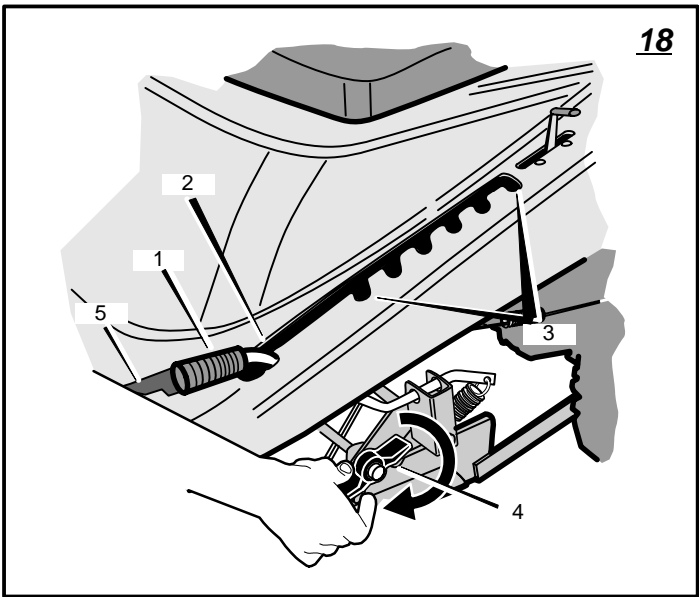
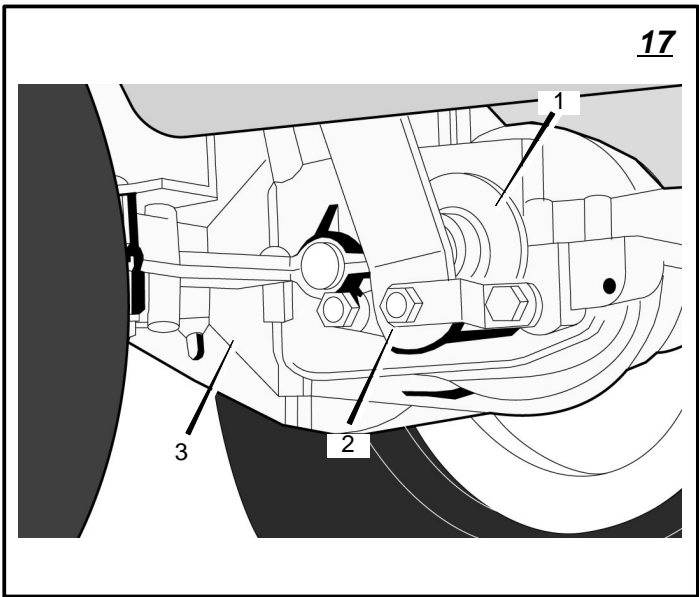
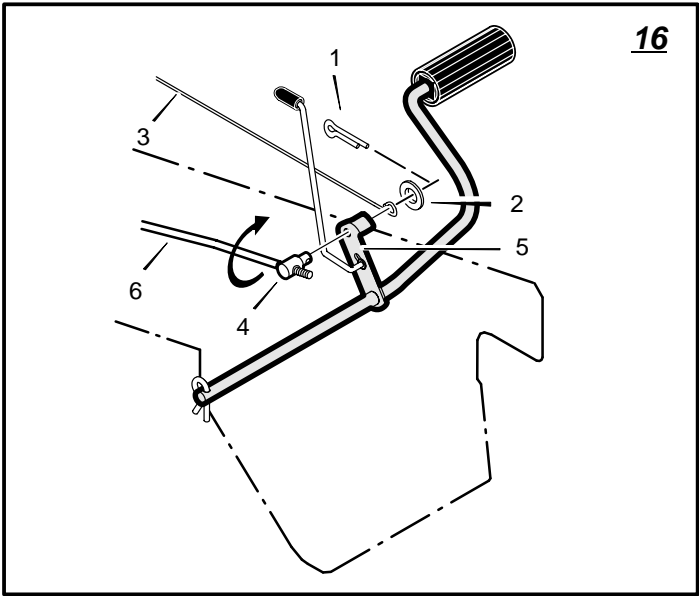
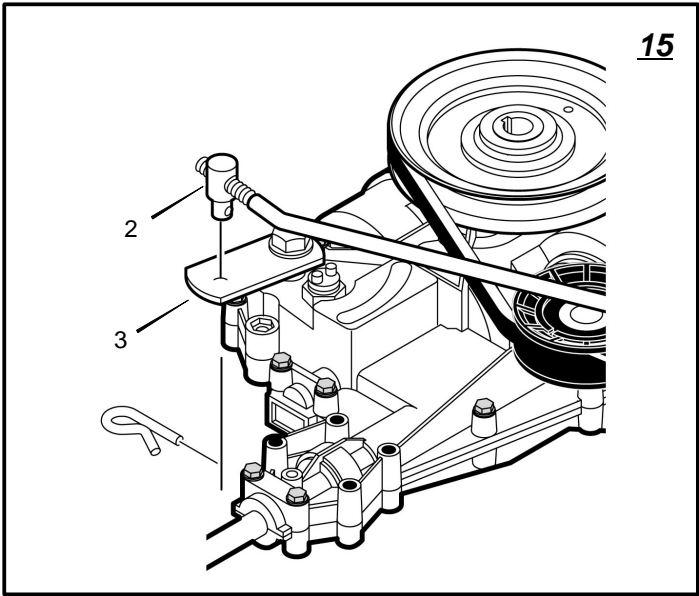
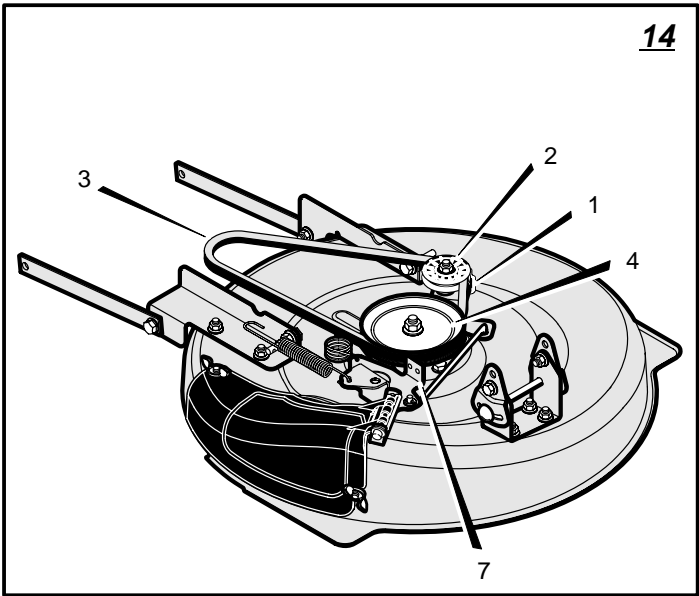
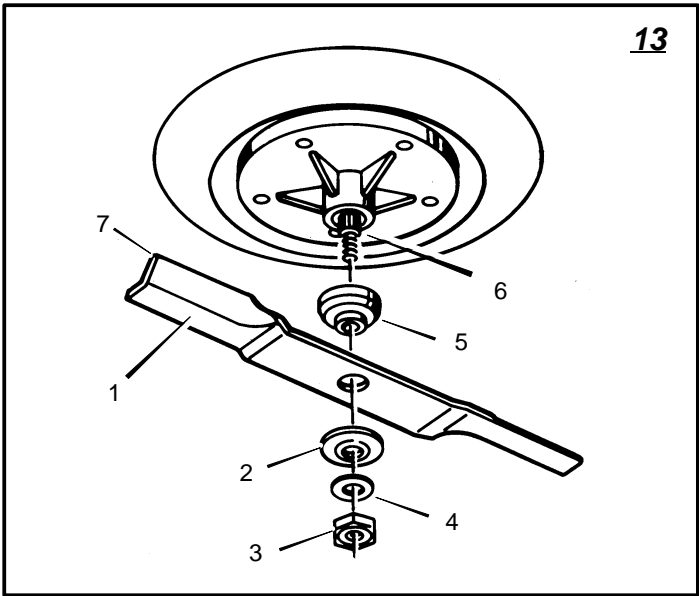
M10/30

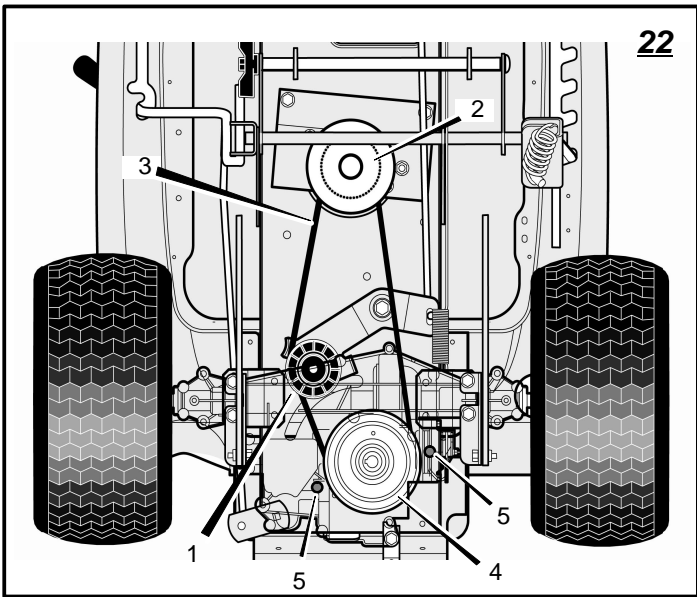
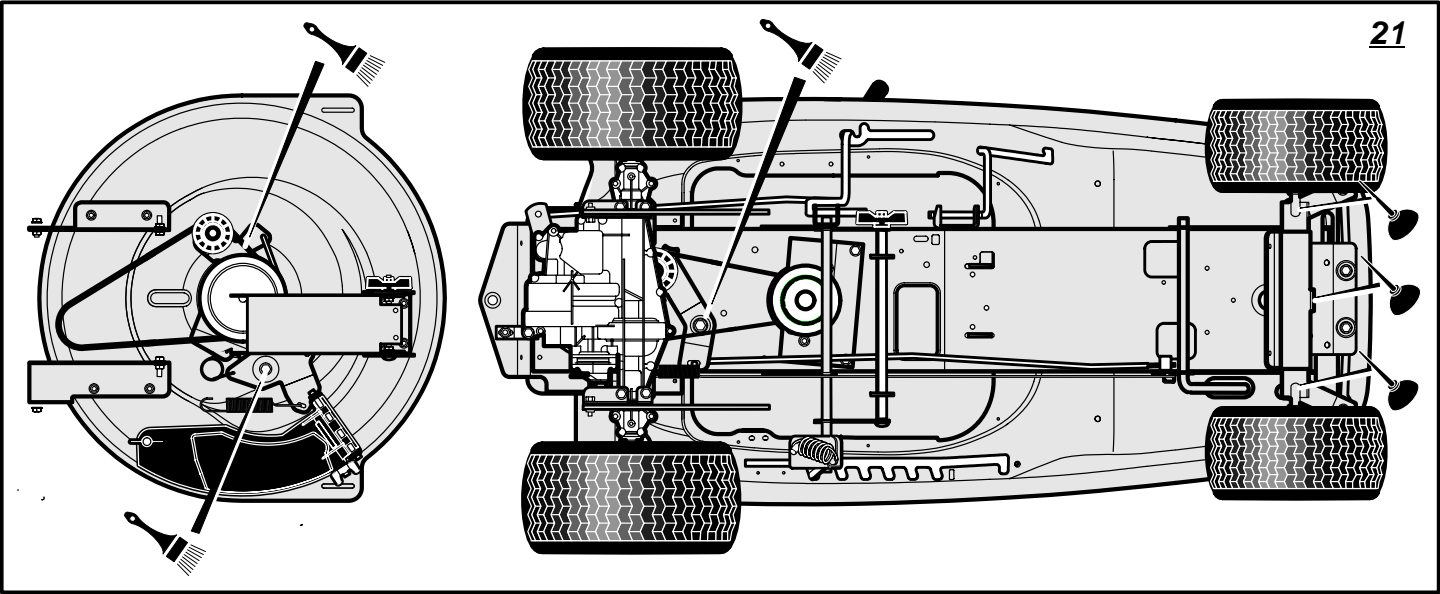
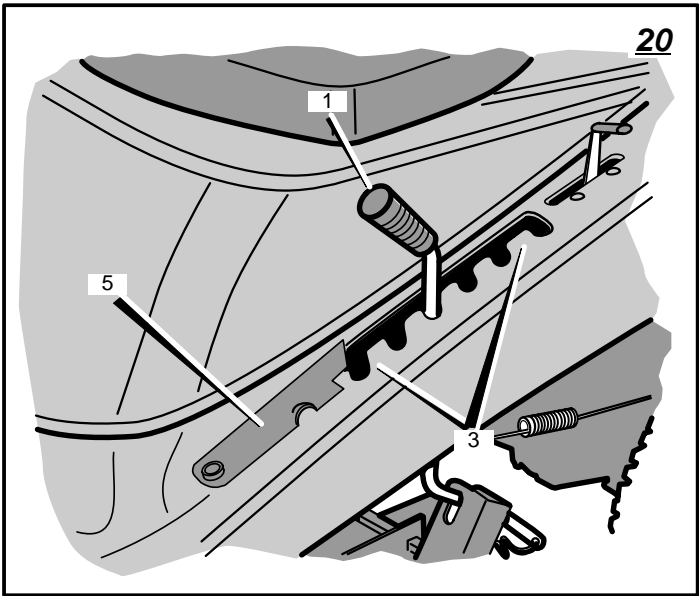
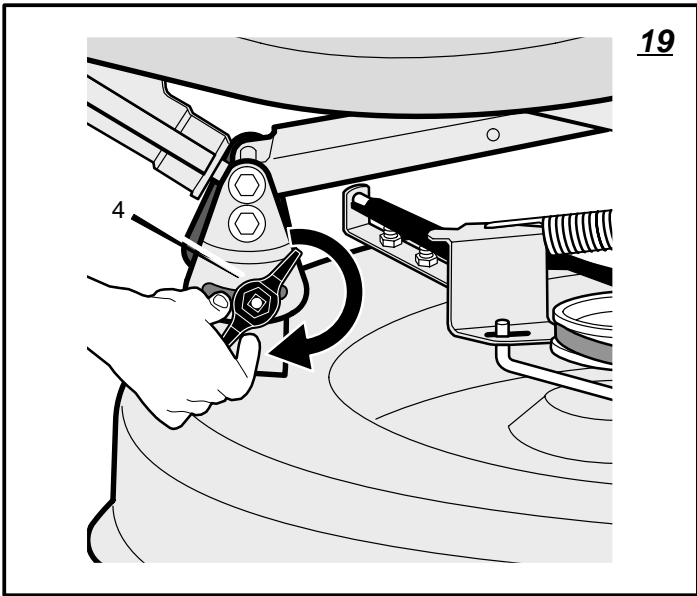
HERITAGE TRACTOR
CODE133T

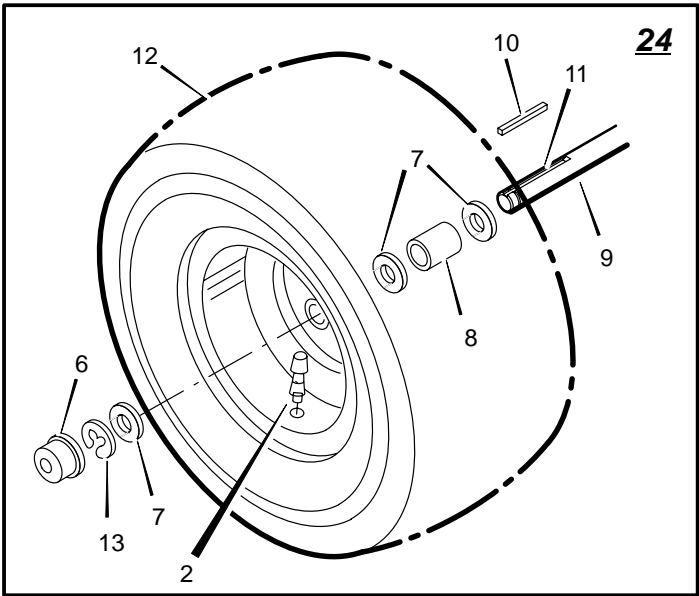
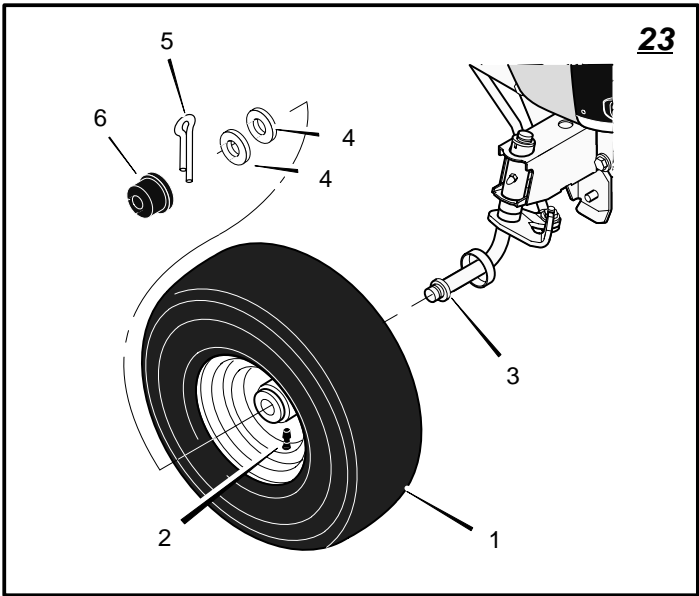
INSTRUCTION BOOK

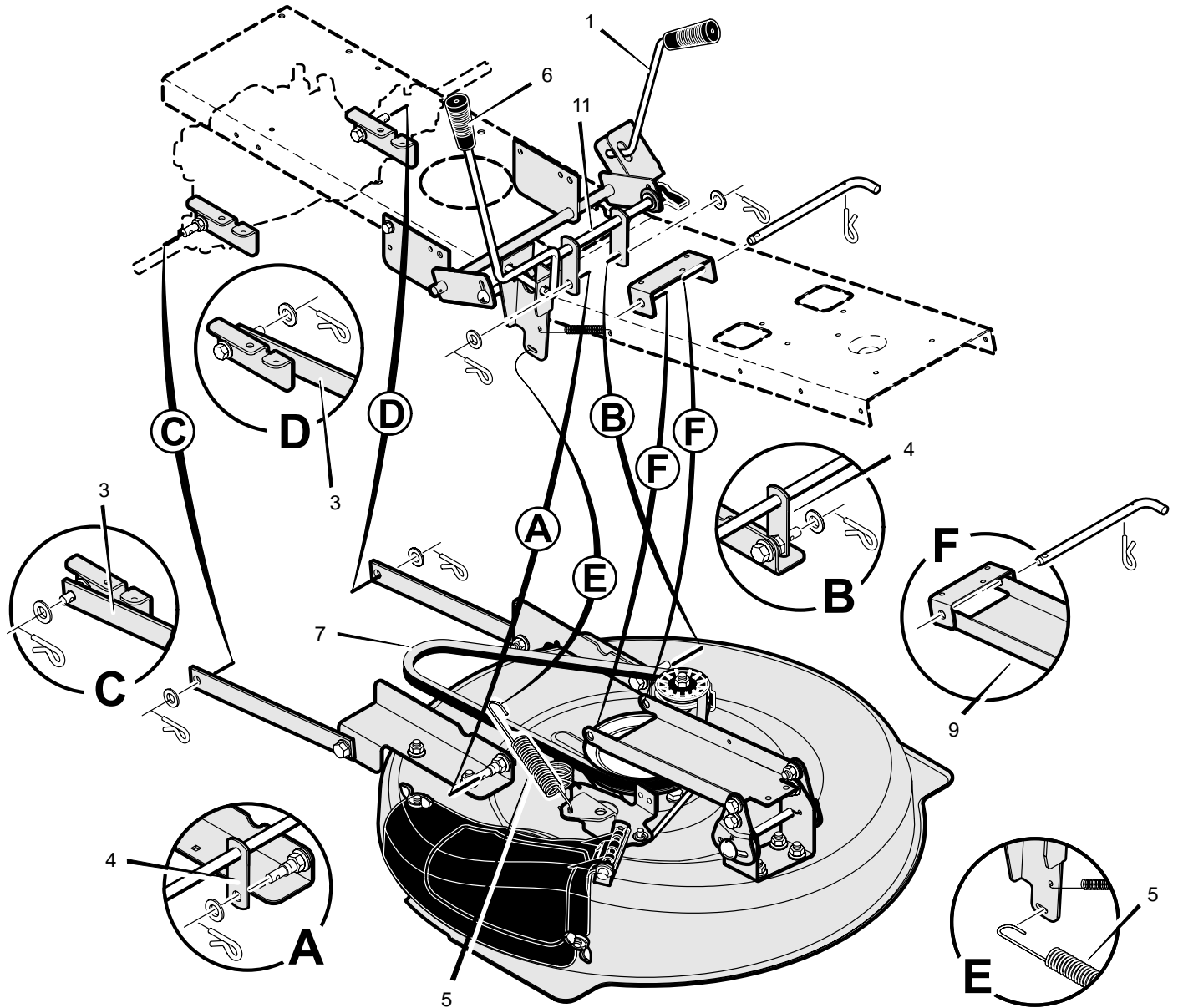
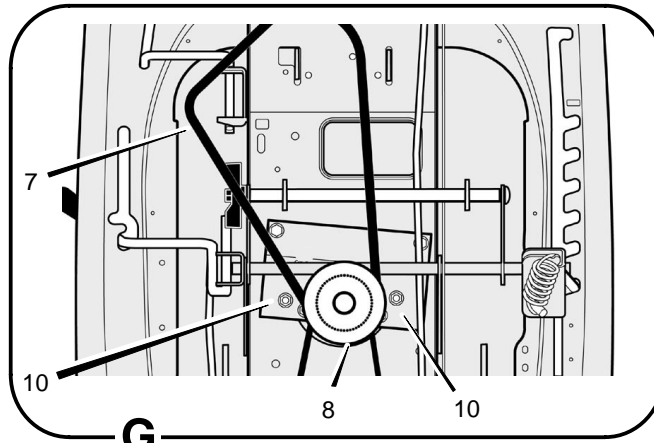


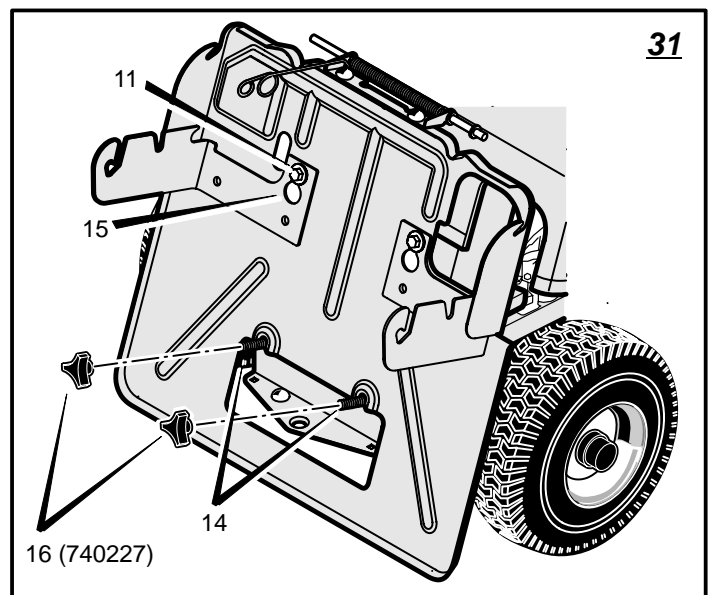
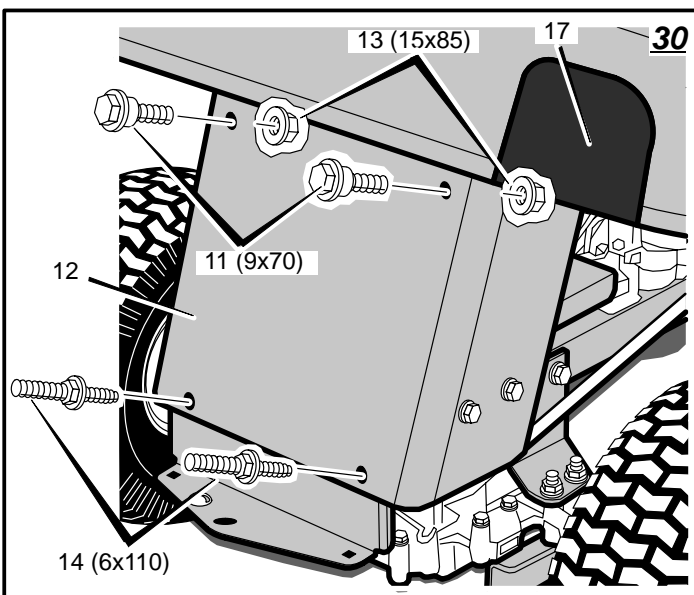
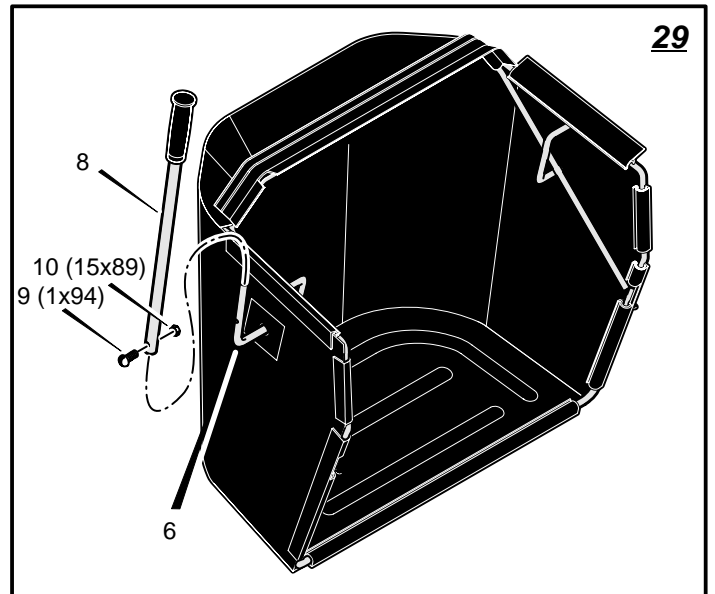
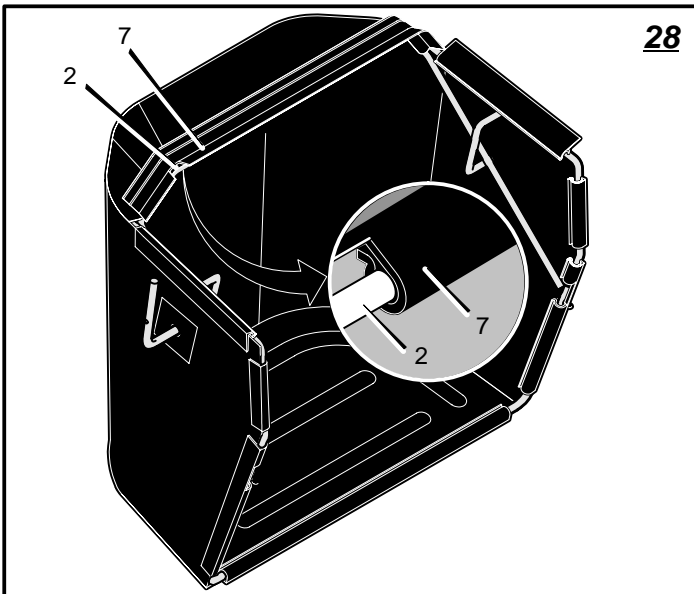
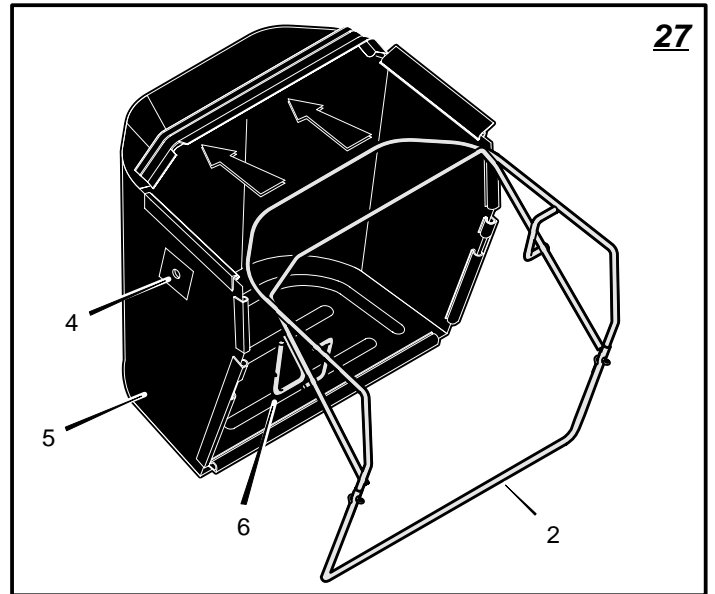
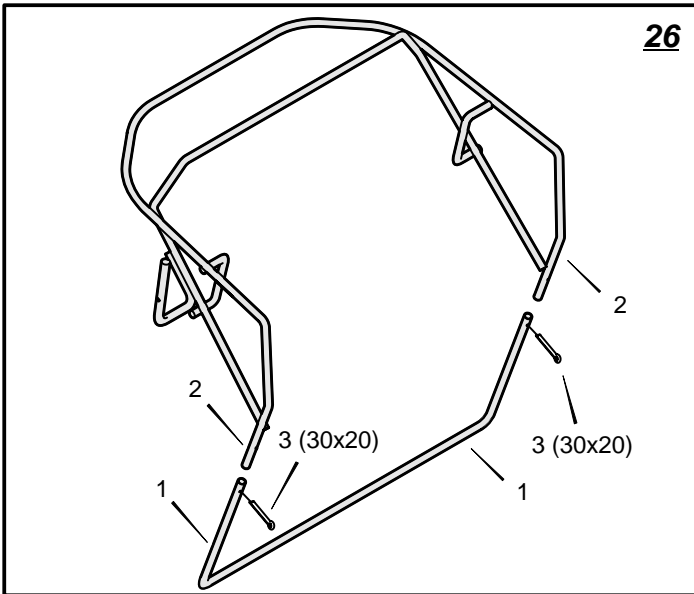


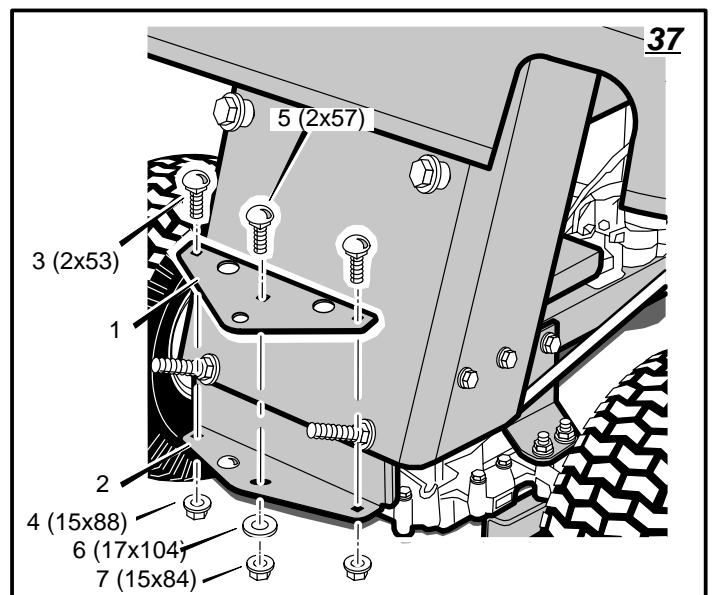
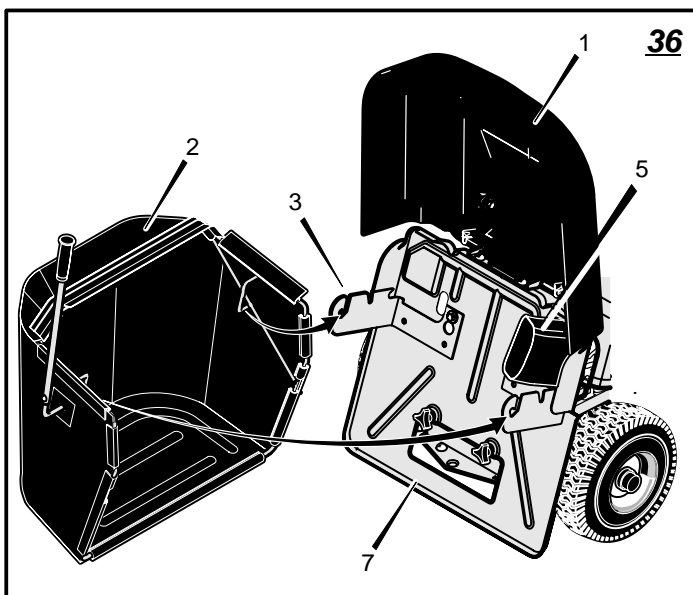
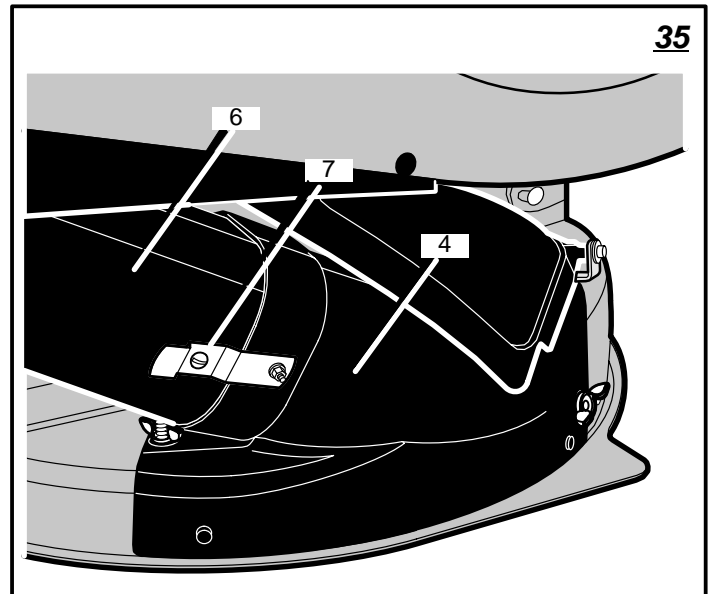
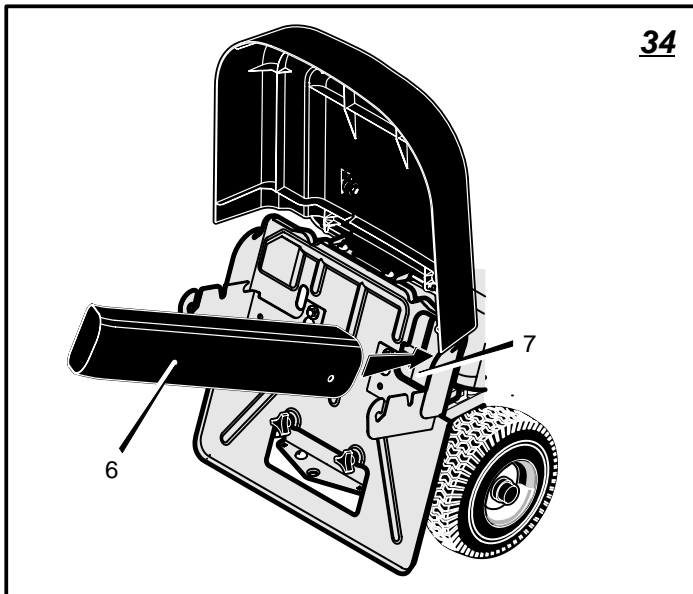
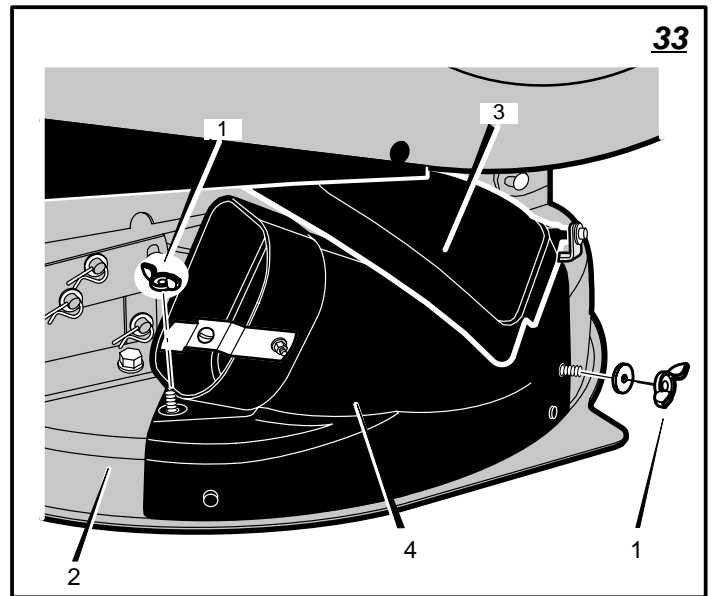
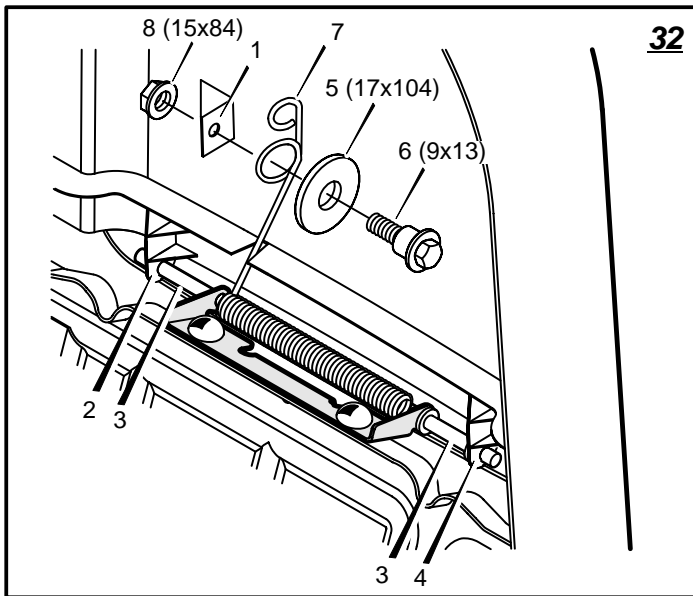


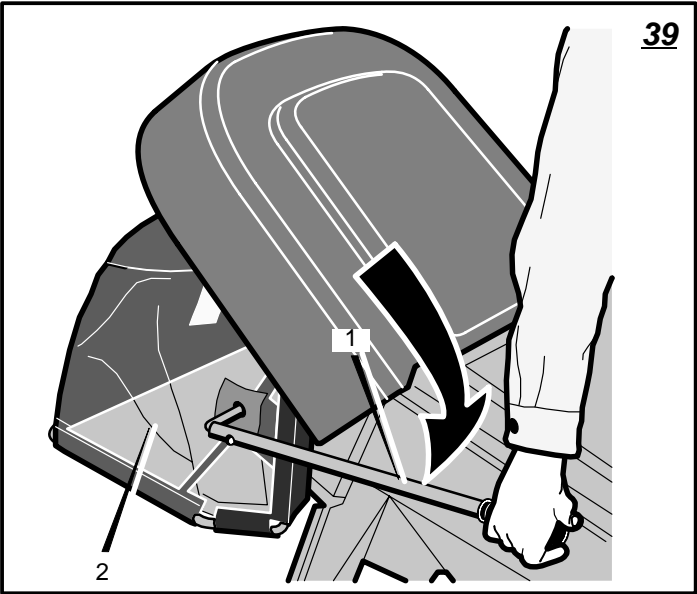
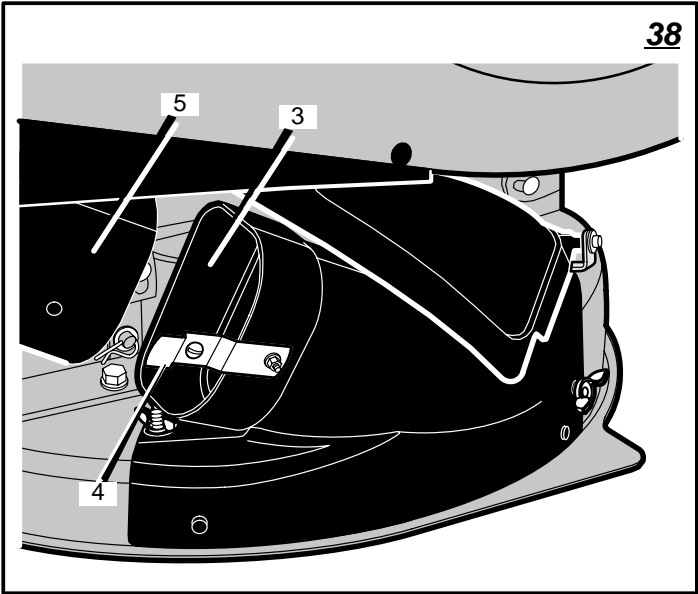


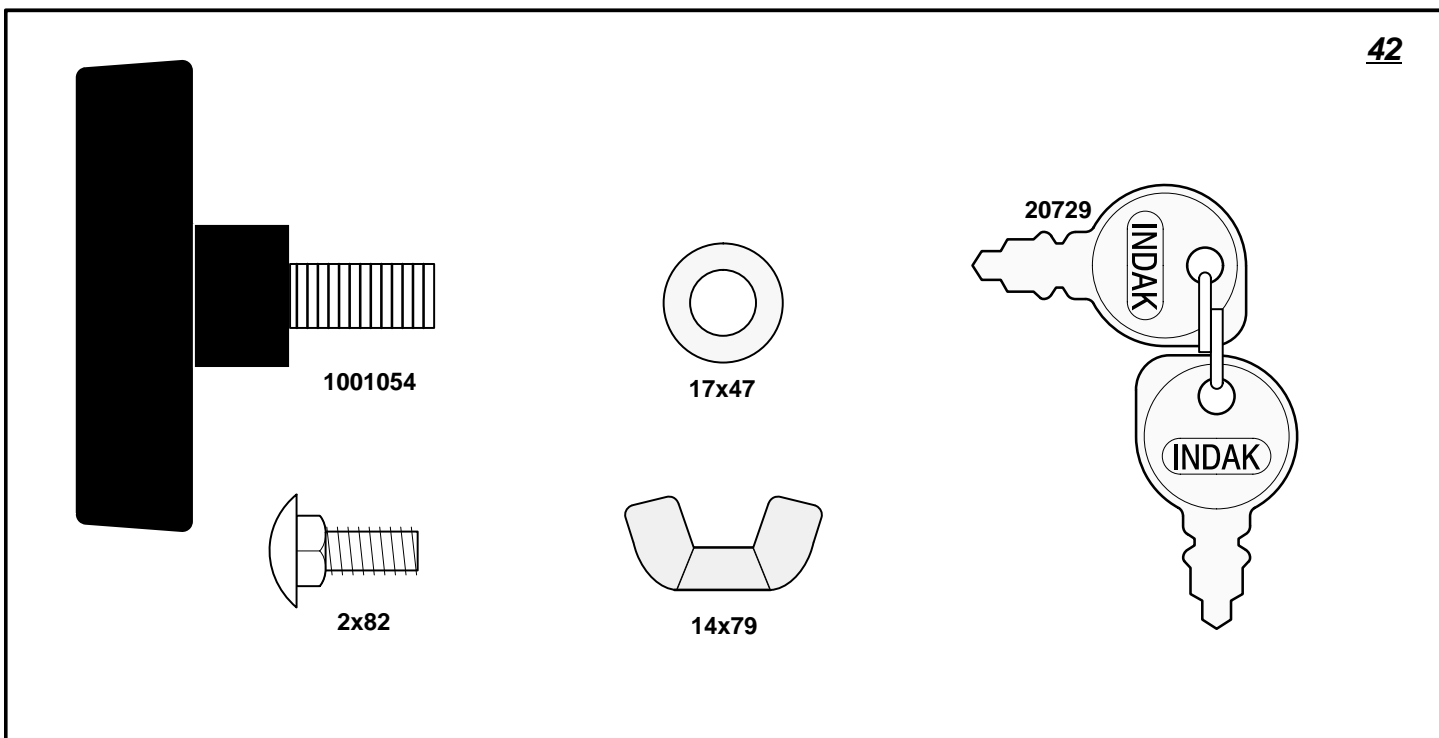
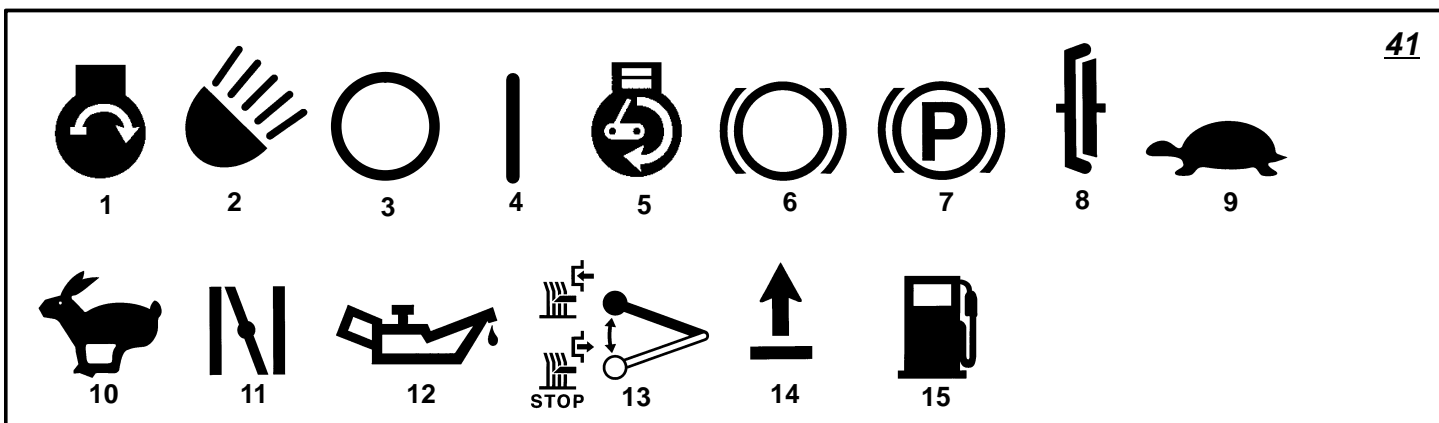
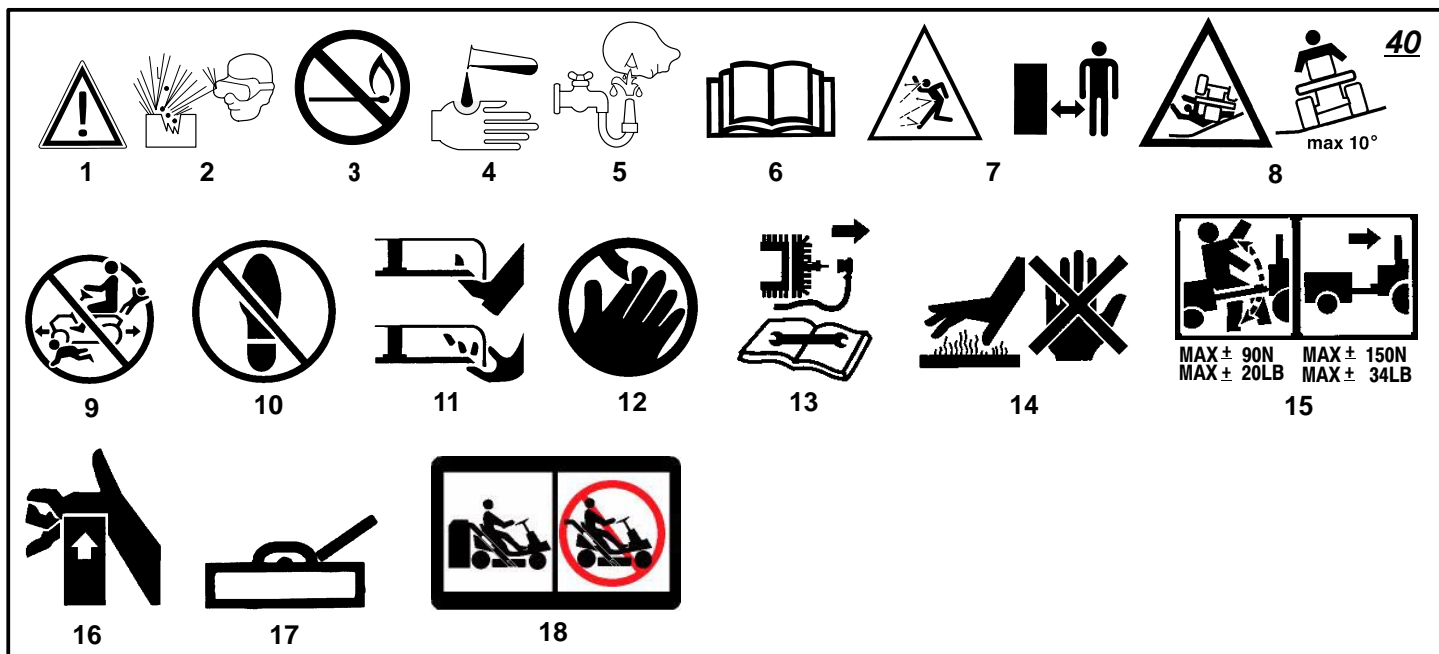


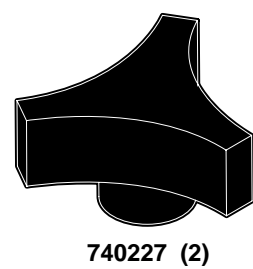
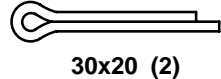
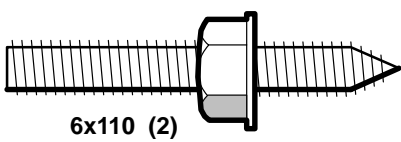
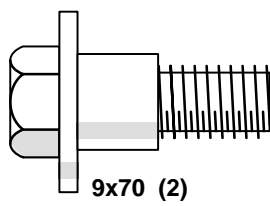
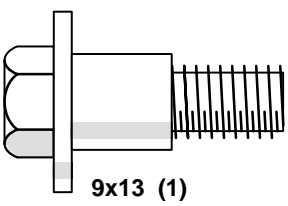
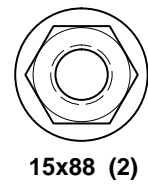
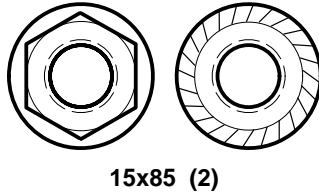
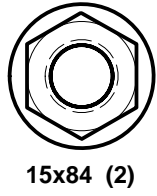
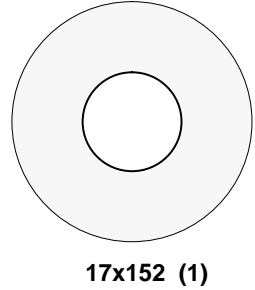
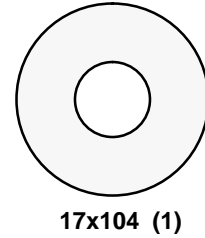
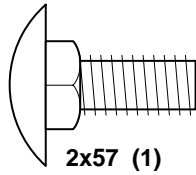
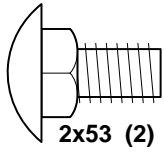
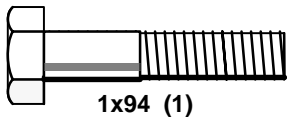












LIMITED WARRANTY

Hayter Limited warrants to the original user / purchaser that this unit shall be free from defects in material and workmanship under normal use and service for a period of **three years** from the date of purchase. The manufacturer of the engine furnish their own warranty and services are provided through their authorised network (Refer to "Engine Warranty Statement"). To qualify for the full benefit of the warranty, the warranty registration card must be returned within 60 days of purchase. Subject to the conditions and exclusions noted in this limited warranty, we shall at our option, repair or replace any warranted part during the applicable period. If you are in doubt or experience any difficulty, please consult a **Hayter** Authorised Service Dealer for clarification.

To qualify for the extended warranty (second and third year) of the three year limited warranty, the machine must have annual services carried out by an Authorised Hayter Service Dealer. These chargeable services should be carried out within 12 and 24 months of the date of purchase.

Excluded from the extended warranty period are those items which are subject to normal wear and tear e.g. tyres, wheels, cutterblades, cables, batteries and other consumable wearing parts.

All consumer machines which are fitted with a **genuine** Hayter friction disc as original equipment, before use, are covered by a **Lifetime Warranty** against the engine crankshaft bending. **Note:** friction washers, blade brake units and other such devices are not applicable. Only machines fitted with a **genuine** Hayter friction disc, which are used in accordance with the recommended operating and maintenance procedures, are covered.

This warranty does not apply to any unit that has been tampered with, altered, misused, abused or used for hire, and will become invalid if non genuine Hayter parts are fitted. This warranty does not cover minor mechanical adjustments unless they are due to defective materials or workmanship. Consult the Owner's Handbook or a Hayter Authorised Service Dealer for assistance when making these adjustments.

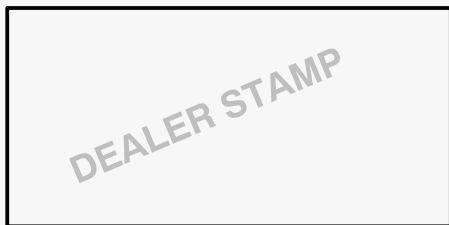
A warranty period of 90 days applies to machines used for commercial purposes.

To make a warranty claim, return the unit to a **Hayter** authorised dealer along with proof of purchase stating the machine serial number and date of purchase. The service receipt(s) or this Owner's Handbook with the 1st/2nd year service boxes fully completed, must be produced as proof of entitlement to the extended warranty period. Subject to the conditions and exclusions in this limited warranty, the authorised dealer will, at our option, repair or replace any warranted part within the duration of the warranty period.

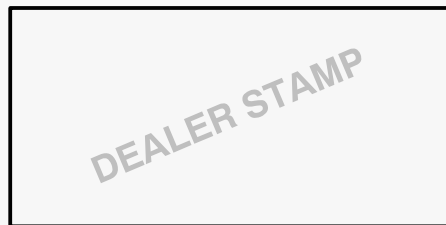
This limited warranty gives you specific legal rights and is in addition to any statutory rights to which you may be entitled and your statutory rights are not affected by this warranty. If you need additional information concerning this written warranty, or assistance in obtaining services, please write to:

HAYTER LIMITED, Service Department, Spellbrook, Bishop's Stortford, Hertfordshire CM23 4BU.

1st
Year
Service
Record



2nd
Year
Service
Record



Date
Signed

Date
Signed

CONTENTS

LIMITED WARRANTY	13
INTERNATIONAL PICTORIALS	14
OWNER'S INFORMATION	15
SAFE OPERATION PRACTICES	15
ASSEMBLY	16
GRASS BAGGER	16
OPERATION	18
MAINTENANCE CHART	21
MAINTENANCE	21
MAINTENANCE	21
TROUBLE SHOOTING CHART	25

INTERNATIONAL PICTORIALS

IMPORTANT: The following pictorials are located on your unit or on literature supplied with the product. Before you operate the unit, learn and understand the purpose for each pictorial.

NOTE: Illustrations and pictorials begin on page 2.

Safety Warning Pictorials (Figure 40)

- 1 WARNING
- 2 Shield Eyes. Explosive Gases Can Cause Blindness Or Injury.
- 3 No Sparks, Flames or Smoking.
- 4 Sulphuric Acid Can Cause Blindness Or Severe Burns
- 5 Flush Eyes Immediately With Water. Get Medical Help Fast.
- 6 IMPORTANT: Read Owner's Manual Before Operating This Machine.
- 7 WARNING: Thrown Objects. Keep

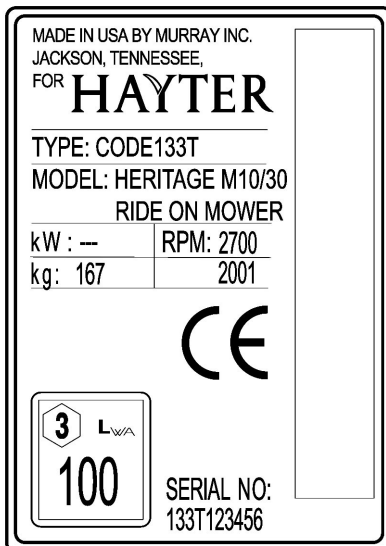
Bystanders Away. Read User Instructions Before Operating This Machine.

- 8 WARNING: Do Not Use This Machine On Slopes Greater Than 10 Degrees.
- 9 DANGER: Keep People, Especially Children, Away From Unit.
- 10 DANGER: No Step.
- 11 DANGER: Keep Feet And Hands Away From Rotating Blade.
- 12 DANGER: Keep Hands Away From Rotating Blade.
- 13 DANGER: Disconnect Spark Plug Wire Before Servicing Unit.
- 14 WARNING: Hot Surface.
- 15 WARNING: Use Caution When Connecting Or Disconnecting Accessories.
- 16 WARNING: Crushed Fingers.
- 17 IMPORTANT: Follow Instructions In Owner's Manual To Level The Deck.

- 18 WARNING: Operate only with fully assembled grass bag.

Control And Operating Pictorials (Figure 41)

- 1 Engine Start
- 2 Lights
- 3 Engine Run
- 4 Engine Stop
- 5 Engine Run
- 6 Brake
- 7 Parking Brake
- 8 Clutch
- 9 Slow
- 10 Fast
- 11 Choke
- 12 Oil
- 13 Blade Rotation Control
- 14 Raise
- 15 Fuel



Declared vibration emission values in accordance with Directive 89/392/EEC.

Vibration Emission according to BS EN 1032: Seat < 0,5 m/s²,

Right Running Board < 0,5 m/s², Left Running Board < 0,5 m/s²

Vibration Emission according to BS EN 1033: Steering Wheel 5,73 m/s²

Values determined with operator in operating position when the machine was operated stationary on a grass covered surface at 2700 min⁻¹.

Declared airborne noise emissions in accordance with Directive 84/538/EEC.

Sound Power Level 100 dB(A)

Sound Pressure Levels

at operator ears 86,3 dB(A) left; 86,4 dB(A) right.

Values determined at ear according to the specifications of 81/1051/EEC.

OWNER'S INFORMATION

Know your product: If you understand the unit and how the unit operates, you will get the best performance. As you read this manual, compare the illustrations to the unit. Learn the location and the function of the controls. To help prevent an accident, follow the operating instructions and the safety rules. Keep this manual for future reference.



WARNING: Look for this symbol to indicate important safety precautions. This symbol indicates: "Attention! Become Alert! Your Safety Is At Risk."

Responsibility Of The Owner



WARNING: This cutting machine is capable of amputating hands and feet and throwing objects. Failure to observe the following safety instructions could result in serious injury or death to the operator or bystanders.

The responsibility of the owner is to follow the instructions below.

SAFE OPERATION PRACTICES

For Ride-On (Riding) Rotary Mower Machines

Training

1. Read the instructions carefully. Be familiar with the controls and the proper use of the equipment.
2. Never allow children or people unfamiliar with these instructions to use the mower. Local regulations may restrict the age of the operator.
3. Never mow while people, especially children, or pets are nearby.
4. Keep in mind that the operator or user is responsible for accidents or hazards occurring to other people or their property.
5. Do not carry passengers.
6. All drivers should seek and obtain professional and practical instruction. Such instruction should emphasize:
 - a. the need for care and concentration when working with ride-on machines;
 - b. control of a ride-on machine sliding on a slope will not be regained by the application of the brake. The main reasons for loss of control are:
 - insufficient wheel grip;
 - being driven too fast;
 - inadequate braking
 - the type of machine is unsuitable for its task;
 - lack of awareness of the effect of ground conditions, especially slopes;
 - incorrect hitching and load distribution.

Preparation

1. While mowing, always wear substantial footwear and long trousers. Do not operate the equipment when barefoot or wearing open sandals.

2. Thoroughly inspect the area where the equipment is to be used and remove all objects which may be thrown by the machine.
3. **WARNING – Petrol is highly flammable.**
 - a. Store fuel in containers specifically designed for this purpose.
 - b. Refuel outdoors only and do not smoke while refuelling.
 - c. Add fuel before starting the engine. Never remove the cap of the fuel tank or add petrol while the engine is running or when the engine is hot.
 - d. If petrol is spilled, do not attempt to start the engine but move the machine away from the area of spillage and avoid creating any source of ignition until petrol vapours have dissipated.
 - e. Replace all fuel tanks and container caps securely.
4. Replace faulty silencers.
5. Before using, always visually inspect to see that the blades, blade bolts and cutter assembly are not worn or damaged. Replace worn or damaged blades and bolts in sets to preserve balance.
6. On multi-blade machines, take care as rotating one blade can cause other blades to rotate.

Operation

1. Do not operate the engine in a confined space where dangerous carbon monoxide fumes can collect.
2. Mow only in daylight or in good artificial light.
3. Before attempting to start the engine, disengage all blade attachment clutches and shift into neutral.
4. Do not use on slopes of more than 10 degrees.
5. Remember there is no such thing as a "safe" slope. Travel on grass slopes requires particular care. To guard against overturning:
 - a. do not stop or start suddenly when going up or downhill;
 - b. engage clutch slowly, always keep machine in gear, especially when travelling downhill;
 - c. machine speeds should be kept low on slopes and during tight turns;
 - d. stay alert for humps and hollows and other hidden hazards;
 - e. never mow across the face of the slope, unless the mower is designed for this purpose.
6. Use care when pulling loads or using heavy equipment.
 - a. Use only approved drawbar hitch points.
 - b. Limit loads to those you can safely control.
 - c. Do not turn sharply. Use care when reversing.
 - d. Use counterweight(s) or wheel weights when suggested in the Instruction Book.
7. Watch out for traffic when crossing or near roadways.
8. Stop the blades rotating before crossing surfaces other than grass.
9. When using any attachments, never direct discharge of material toward bystanders

- nor allow anyone near the machine while in operation.
10. Never operate the mower with defective guards or shields, or without safety protective devices in place.
11. Do not change the engine governor settings or overspeed the engine. Operating an engine at excessive speed may increase the hazard of personal injury.
12. Before leaving the operator's position
 - a. disengage the power take-off and lower the attachments;
 - b. change into neutral and set the parking brake;
 - c. stop the engine and remove the key.
13. Disengage drive to attachments, stop the engine, and disconnect the spark plug lead(s) or remove the ignition key
 - a. before cleaning blockages or unclogging chute;
 - b. before checking, cleaning or working on the mower;
 - c. after striking a foreign object. Inspect the mower for damage and make repairs before restarting and operating the equipment;
 - d. if the machine starts to vibrate abnormally (check immediately).
14. Disengage drive to attachments when transporting or not in use.
15. Stop the engine and disengage drive to attachment
 - a. before refuelling;
 - b. before removing the grass catcher;
 - c. before making height adjustment unless adjustment can be made from the operator's position.
16. Reduce the throttle setting during engine run-out and, if the engine is provided with a shut-off valve, turn the fuel off at the conclusion of mowing.
17. Before and when backing, look **behind and down** for small children.
18. Use extra care when approaching blind corners, shrubs, trees or other objects that may obscure vision.

Maintenance and Storage

1. On multi-blade machines, take care as rotating one blade can cause other blades to rotate.
2. When machine is to be parked, stored or left unattended, lower the cutting means unless a positive mechanical lock is used.
3. Keep all nuts, bolts, and screws tight to be sure the equipment is in safe working condition.
4. Never store the equipment with petrol in the tank inside a building where fumes may reach an open flame or spark.
5. Allow the engine to cool before storing in any enclosure.
6. To reduce the fire hazard, keep the engine, silencer, battery compartment and petrol storage area free of grass, leaves, or excessive grease.
7. Check the grass catcher frequently for wear or deterioration.
8. Replace worn or damaged parts for safety.
9. If the fuel tank has to be drained, this should be done outdoors.

ASSEMBLY

All fasteners are in the parts bag. Do not discard any parts or material until the unit is assembled.



WARNING: Before doing any assembly or maintenance to the mower, remove the spark plug lead.

NOTE: In this instruction book, left and right describe the location of a part with the operator on the seat.

NOTE: Illustrations and pictorials begin on page 2.

NOTE: To assemble the following loose parts, use the fasteners shown at full size in Figure 42.

How To Install The Seat (Figure 1)

1. Carefully remove the plastic bag from the seat (1).
2. Raise the seat support (2) and secure in the UP position with the seat support rod (6).
3. Align the holes in the seat (1) to the holes in the seat support (2). Fasten the seat (1) to the seat support (2) with the fasteners (4) and (5).
4. Check the operating position of the seat (1). If the seat (1) needs to be adjusted, loosen the two wing bolts (5). Slide the seat (1) forward or backward along the seat adjusting holes (3). Tighten the wing bolts (5).

How To Assemble The Steering Wheel (Figure 2)

1. Make sure the front wheels point forward.
2. Slide the tube (1) into the console (2). Make sure the end of the tube (1) fits over the steering bushing (3).
3. Slide the steering wheel (4) and steering post (5) into the tube (1) and console (2). Push on the steering wheel (4). The steering post (5) will lock onto the pinion gear. Pull on the steering wheel (4). Make sure that the steering post (5) is locked in place.

Maintenance Free Battery (Figure 3)

IMPORTANT: Before you attach the battery cables to the battery, check the battery date. The battery date tells if the battery must be charged.

1. Raise the seat support and secure in the UP position with the seat support rod.
2. Check the top of the battery (1) for the location of the battery date.
3. If the battery (1) is put into service before the battery date, the battery cables can be attached without charging the battery (1). See "How To Install The Battery Cables".
4. If the battery (1) is put into service after the battery date, the battery (1) must be charged. See "How To Charge The Maintenance Free Battery".

F-010604J

How To Charge The Battery (Figure 3)



WARNING: When you charge the battery, do not smoke. Keep the battery away from any sparks. The fumes from the battery acid can cause an explosion.

1. To disconnect the battery retainer (2) from the battery tray (3), push in on the lower end of the battery retainer (2).
2. Remove the battery (1) from the right side of the unit.
3. Remove the protective caps from the battery terminals.
4. Use a 12 volt battery charger to charge the battery (1). Charge at a rate of 6 amperes for one hour. If you do not have a battery charger, have an authorised Hayter dealer charge the battery.
5. Install the battery (1) and secure with the battery retainer (2). Make sure the positive (+) terminal (4) is on the right side.

How To Install The Battery Cables (Figure 3)



WARNING: To prevent sparks, fasten the red cable to the positive (+) terminal before you connect the black cable.

1. Remove the protective caps from the battery terminals.
2. Fasten the red cable (5) to the positive (+) terminal (4) with the fasteners (6) and (7).
3. Fasten the black cable 8 to the negative (-) terminal with the fasteners (6) and (7).

Check The Tyres

Check the air pressure in the tyres. Tyres with too much air pressure will cause the unit to ride rough. Also, the wrong air pressure will keep the mower housing from cutting level. The correct air pressure is: Front Tyres 1.5 BAR (22 PSI), Rear Tyres 1 BAR (14 PSI). The tyres were over inflated for shipment.

Check The Level Of The Mower Housing

Make sure the level of cut is still correct. After you mow a short distance, look at the area that was cut. If the mower housing does not cut level, see the instructions on "How To Level The Mower Housing" in the Maintenance section of this instruction book.

How To Prepare The Engine

NOTE: The engine was shipped from the factory filled with oil. Check the level of the oil. Add oil as needed.

See the engine manufacturer's instructions for the type of petrol and oil to use. Before you use the unit, read the information on safety, operation, maintenance, and storage.



WARNING: Follow the engine manufacturer's instructions for the type of petrol and oil to use. Always use a safety petrol container. Do not smoke when adding petrol to the engine. When inside an enclosure, do not fill with petrol. Before you add petrol, stop the engine. Let the engine cool for several minutes.

Important! Before You Start Mowing

- ☐ Check the engine oil.
- ☐ Fill the fuel tank with petrol.
- ☐ Check the level of the mower housing.
- ☐ Check the air pressure of the tyres.
- ☐ Attach the battery cables.

GRASS BAGGER

All fasteners are in the parts bag. Do not discard any parts or material until the unit is assembled.



WARNING: Before doing any assembly or maintenance to the mower, remove the spark plug lead.

NOTE: In this instruction book, left and right describe the location of a part with the operator on the seat.

NOTE: Illustrations and pictorials begin on page 2.

NOTE: To assemble the following loose parts, use the fasteners shown at full size in Figure 43.

How To Assemble The Grass Bag

1. (Figure 26) Slide the bottom tube (1) onto the wire frame (2) and attach with cotter pins (3).
2. Align holes in tube (1) with holes in wire frame (2) and secure with cotter pins (3). Make sure to bend BOTH legs of the cotter pins (3) apart.
3. (Figure 27) First, put the cut-out (4), located on the right side of the grass bag (5), around the handle support (6).
4. Then, slide the grass bag (5) over the wire frame (2).
5. (Figure 28) Attach the clips (7) to the wire frame (2).
6. (Figure 29) Mount the handle (8) on the handle support (6) and secure with bolt (9) and nut (10).

How To Attach The Bag Mounting Plate

1. (Figure 30) Attach two shoulder bolts (11) to the rear plate (12) and secure with nuts (13).
2. Remove the two screws located at the bottom of the rear plate (12). Replace the screws with two double end studs (14). Make sure to assemble the short end of the studs (14) to the rear plate (12).
3. Remove the plastic cover (17) from the rear plate (12).
4. (Figure 31) Align the slots in the bag mounting plate (15) with the shoulder bolts (11). Push the bag mounting plate (15) down onto the shoulder bolts (11).

5. Fasten the bottom of the **bag mounting plate (15)** to the **studs (14)** with the **knobs (16)**.

How To Assemble The Bag Cover (Figure 32)

1. To attach the **cover (1)**, slide the left **pivot hole (2)** onto the left end of the **hinge rod (3)**. Slide the **cover (1)** to the right.
2. Slide the right **pivot hole (4)** onto the right end of the **hinge rod (3)**. Side the **cover (1)** to the left until it stops.
3. Put the large **washer (5)** onto the **shoulder bolt (6)**. Slide the **shoulder bolt (6)** through the large loop in the **torsion spring (7)**. Then, slide the **shoulder bolt (6)** through the mounting hole in the **cover (1)**. Secure with the **nut (8)**.



WARNING: The torsion spring (7) is spring loaded to keep the cover (1) closed. Use caution when attaching the the torsion spring (7).

How To Assemble The Extension And Connecting Tubes

1. (Figure 33) Remove the wingnuts (1) from the **mower housing (2)**.
2. Raise the **mulch cover (3)**. Mount the **extension tube (4)** onto the **mower housing (2)**. Secure the **extension tube (4)** with **wingnuts (1)**.
3. (Figure 34) Slide the straight end of the **connecting tube (6)** through the cut-out in the **bag mounting plate (7)**. Make sure the warning symbol on the **connecting tube (6)** is facing outward and can be seen.
4. (Figure 35) Slide the end of the **connecting tube (6)** into the **extension tube (4)**. Mount the **retaining clip (7)** into the hole in the **connecting tube (6)**.

How To Mount The Grass Bag (Figure 36)

1. Lift and hold the **cover (1)** in the UP position.

2. Mount the **grass bag assembly (2)** into the slots of the **support brackets (3)**.
3. Make sure the **grass bag assembly (2)** is aligned properly and is free to rotate.
4. Lower the **cover (1)**.

How To Assemble The Hitch Extension Plate (Figure 37)

1. Assemble the rear of the **hitch extension plate (1)** to the top of the **hitch plate (2)** with two **bolts (3)** and two **nuts (4)**. Make sure to mount the **nuts (4)** under the **hitch plate (2)**.
2. Fasten the front of the **hitch extension plate (1)** with **bolt (5)**, **washer (6)** and **nut (7)**.

Final Assembly

1. Check all fasteners. Make sure all fasteners are properly installed and are tight.
2. Check installation. Make sure all parts are correctly installed.



WARNING: Make sure that the grass bagger is properly assembled and correctly installed. The Grass Bagger must only be used when fully assembled and correctly installed.

OPERATION

NOTE: Illustrations and pictorials begin on page 2.

Location Of Controls (Figure 4)

Blade Rotation Control (1): Use the blade rotation control to start and stop the rotation of the blade.

Clutch / Brake Pedal (2): The pedal has two functions. The first function is a clutch. The second function is a brake.

Ignition Switch (3): Use the ignition switch to start and stop the engine.

Shift Lever (4): Use the shift lever to change the speed of the unit.

Lift Lever (5): Use the lift lever to change the height of cut.

Parking Brake Lever (6): Use the parking brake lever to engage the brake when you leave the unit.

Throttle Control Lever (7): Use the throttle control lever to increase or decrease the speed of the engine.

Attachments

This unit can use many different attachments. This unit can pull attachments like a lawn sweeper, a lawn aerator, or a hopper spreader. This unit can not use attachments that engage the ground like a plough, a disk harrow, or a cultivator.

For trailer and pull-behind attachments, the maximum weight is 90 kg (200 lbs.).

How To Use The Throttle Control (Figure 4 and Figure 5)

Use the **throttle/choke control (7)** to increase or decrease the speed of the engine.

1. Move the **throttle/choke control (7)** completely forward to the **CHOKE** position to start a cold engine.
1. The **FAST** position is marked with a detent. For normal operation and when using a grass bagger, move the throttle control to the **FAST** position. For maximum charging of the battery and for a cooler running engine, operate the engine in the **FAST** position.
2. The engine governor is set at the factory for maximum performance. Do not adjust the governor to increase the speed of the engine.

How To Use The Blade Rotation Control (Figure 4 and Figure 6)

Use the **blade rotation control (1)** to engage the blade(s).

1. Before you start the engine, make sure the **blade rotation control (1)** is in the **DISENGAGE** position (8).
2. To rotate the blade, move the **blade rotation control (1)** forward to lock the blade in the **ENGAGE** position (9).
3. To stop the blade, move the **blade rotation control (1)** to the **DISENGAGE** position (8). Before you leave the operator's position, make sure the blade(s) has stopped rotating.

F-010604J

4. Before you ride the unit across a sidewalk or a road, move the **blade rotation control (1)** to the **DISENGAGE** position.



WARNING: Always keep your hands and feet away from the blade, deflector opening, and the mower housing when the engine runs.

How To Use The Shift Lever

To change the forward speed or the direction of the unit, follow the steps below.

CAUTION: Before you move the shift lever, completely push the clutch/brake pedal (2) forward to stop the unit. If the unit is not stopped, the gearbox can be damaged.

1. (Figure 7) Completely push the **clutch/brake pedal (2)** forward to stop the unit. Keep your foot on the pedal.
2. (Figure 8) Move the **throttle control lever (7)** to the **SLOW** position.
3. (Figure 9) To go forward, move the **shift lever (4)** to a forward speed setting. To go backward, move the **shift lever (4)** to reverse.
4. (Figure 7) Slowly release the **clutch/brake pedal (2)**. Do not keep your foot on the pedal.
5. (Figure 8) Move the **throttle control (7)** to the **FAST** position.

How To Use The Parking Brake (Figure 7)

1. Completely push the **clutch/brake pedal (2)** forward.
2. Lift the **parking brake lever (6)**.
3. Remove your foot from the **clutch/brake pedal (2)** and then release the **parking brake lever (6)**. Make sure the parking brake will hold the unit.
4. To release the **parking brake (6)**, completely push the **clutch/brake pedal (2)** forward. The parking brake will automatically release.



WARNING: Before you leave the operator's position, move the shift lever to the **neutral (N)** position. Set the **parking brake**. Move the **blade rotation control** to the **DISENGAGE** position. Stop the engine and remove the ignition key.

How To Change The Cutting Height (Figure 10)

To change the cutting height, raise or lower the **lift lever (5)** as follows.

1. Move the **lift lever (5)** forward to lower the mower housing and back to raise the mower housing.
2. When you ride on a sidewalk or road, move the **lift lever (5)** to the highest position and move the **blade rotation control** to the **DISENGAGE** position.

How To Stop The Unit (Figure 4)

1. Completely push the **clutch/brake pedal (2)** forward to stop the unit. Keep your foot on the pedal.
2. Move the **blade rotation control (1)** to the **DISENGAGE** position.

3. Move the **shift lever (4)** to the **NEUTRAL** position.

4. Set the **parking brake (6)**.



WARNING: Make sure the parking brake will hold the unit.

5. Move the **throttle control (7)** to the **SLOW** position.
6. To stop the engine, turn the **ignition key (3)** to the **OFF** position. Remove the key.

How To Transport The Unit

To transport the unit, follow the steps below.

1. Move the blade rotation control to the **DISENGAGE** position.
2. Raise the lift lever to the highest position.
3. Move the throttle control to a position between **SLOW** and **FAST**.
4. To go faster, move the shift lever to a faster speed.

How To Install The Side Discharge Attachment (Figure 11)



WARNING: To prevent the engine from starting, disconnect the spark plug lead. Make sure the attachment clutchblade rotation control is in the **DISENGAGE** position.

The **mulcher cover (1)** lets you mulch the grass for a clean, fine cut. To discharge the grass out the side, install the **side discharge attachment (2)** as follows.

1. Remove the two **wingnuts (3)** that secure the **mulcher cover (1)**.
2. Lift the **mulcher cover (1)**. Mount the **side discharge attachment (2)** onto the same bolts that secured the **mulcher cover (1)**.
3. Secure the **side discharge attachment (2)** with the **wingnuts (3)**.
4. To mulch, remove the **side discharge attachment (2)** and mount the **mulcher cover (1)** to the mower housing with the **wingnuts (3)**.

How To Operate With The Mower Housing



WARNING: Do not remove the mulch cover, it is a safety device. The deflector forces the discharged material toward the ground. Always keep the deflector in the down position. If the deflector is damaged, replace the deflector with an original equipment part from an authorised Hayter dealer.

IMPORTANT: When you operate with the mower housing, always operate with the throttle control in the **FAST** position.

1. Start the engine.
2. Move the lift lever to a height of cut position. In high or thick grass, cut the grass in the highest position first and then lower the mower housing to a lower position.
3. Move the throttle control to the **SLOW** position.
4. Slowly move the blade rotation control to the **ENGAGE** position.

5. Push the clutch/brake pedal completely forward.
6. Move the shift lever to one of the speed settings.

NOTE: When you mow in heavy grass or mow with a bagger, put the shift lever in the slowest speed.

7. Slowly release the clutch/brake pedal.
8. Move the throttle control to the FAST position. If you need to go faster or slower, stop the unit and move the shift lever to another speed setting.
9. Make sure the level of cut is still correct. After you mow a short distance, look at the area that was cut. If the mower housing does not cut level, see the instructions on "How To Level The Mower Housing" in the Maintenance section.



WARNING: For better control of the unit, select a safe speed.

How To Operate On Hills



WARNING: Do not ride up or down slopes that are too steep to back straight up. Never ride the unit across a slope.

1. Before you ride up or down a hill, move the shift lever to the slowest speed.
2. Do not stop or change speed settings on a hill. If you must stop, quickly push the clutch/brake pedal forward and set the parking brake.
3. To start again, make sure the shift lever is in the slowest speed. Move the throttle control to the SLOW position. Slowly release the pedal.
4. If you must stop or start on a hill, always have enough space for the unit to roll when you release the brake and engage the clutch.
5. Be very careful when you change directions on a hill. When on a slope or in a turn on a hill, move the throttle control to the SLOW position to help prevent an accident.

Before Starting The Engine

Check the oil

NOTE: The engine was shipped from the factory filled with oil. Check the level of the oil and add oil if needed. See the engine manufacturer's instructions for the type of petrol and oil to use.

1. Make sure the unit is level.

NOTE: Do not check the level of the oil while the engine runs.

2. Check the oil. Follow the procedure in the engine manufacturer's instructions.
3. If necessary, add oil until the oil reaches the FULL mark on the dipstick. The quantity of oil needed from ADD to FULL is shown on the dipstick. Do not add too much oil.

F-010604J

Add Petrol



WARNING: Always use a safety petrol container. Do not smoke when adding petrol to the fuel tank. Do not add petrol when you are inside an enclosure. Before you add petrol, stop the engine and let the engine cool for several minutes.

(Figure 12) Fill the fuel tank (1) to the FULL (2) position with regular unleaded petrol. Make sure the petrol is fresh and clean. Leaded petrol will increase deposits and shorten the life of the valves.

How To Start The Engine



WARNING: The electrical system has an operator presence system that includes a sensor switch for the seat. These components tell the electrical system if the operator is sitting on the seat. This system will stop the engine when the operator leaves the seat if the blade rotation control is engaged or if the transmission is engaged. For your protection, always make sure this system operates correctly.

NOTE: The engine will not start unless you depress the clutch/brake pedal or engage the parking brake and move the blade rotation control to the DISENGAGE position.

1. Push the clutch/brake pedal completely forward. Keep your foot on the pedal.
2. Move the shift lever to the neutral (N) position.
3. Make sure the blade rotation control is in the DISENGAGE position.
4. Move the throttle control completely forward to the CHOKE or FAST position. Some models have a separate choke knob. Pull the choke knob to the full CHOKE position.
5. Turn the ignition key to the START position.

NOTE: If the engine does not start after four or five tries, move the throttle control to the FAST position. Again try to start the engine. If the engine will not start, see the TROUBLE SHOOTING CHART.

6. Slowly move the throttle control to the SLOW position.
7. To start a hot engine, move the throttle control to a position between FAST and SLOW.

How To Use The Grass Bagger



WARNING: Do not ride up or down slopes that are too steep to back straight up. Never ride the unit across a slope.

Operation

To operate with the grass bagger, follow the steps below.

1. Start the engine.
2. (Figure 5) Move the throttle control to FAST position.
3. To fill the grass bag, always operate with the shift lever in the slowest speed.

4. If the height of the grass is more than 3 1/2 inches (9cm), cut the grass with the mower housing in the highest position. Then, lower the mower housing and cut the grass again. You can also cut at 1/2 to 2/3 of the full cutting width of the mower housing.

How To Clear The Connector Tube And The Extension Tube

If the connector tube or the extension tube becomes filled with grass, clear as follows.

1. (Figure 6) Move the blade rotation control attachment clutch (1) to the DISENGAGE position (8).
2. Put the transmission in (N) neutral.
3. (Figure 7) Engage the parking brake (6).
4. Stop the engine.
5. (Figure 38) Disconnect the retaining clip (4) from the connecting tube (5).
6. Slide the connecting tube (5) toward the rear. To remove grass or debris, shake the connecting tube (5).
7. If necessary, remove any grass or debris from the extension tube (3).
8. To connect, slide the connecting tube (5) into the extension tube (3). Secure the connecting tube (5) with the retaining clip (4).

How To Empty The Grass Bagger

1. (Figure 6) Move the blade rotation control attachment clutch (1) to the DISENGAGE position (8).
2. Move the shift lever to the neutral (N) position.
3. (Figure 7) Engage the parking brake (6).
4. (Figure 39) While sitting in the seat, hold the handle (1) with your right hand. Pull the handle (1) forward to dump the grass bag (2).

How To Change The Mode Of Cut

To change from bagging grass to mulching or to side discharge operation, all of the components of the grass bagger do not have to be removed.

1. Remove the connecting tube. See "How To Remove The Connecting Tube" in the Maintenance Section.
2. (Figure 33) Remove the wingnuts (1) that secure the extension tube (4) to the mower housing (2). Remove the extension tube (4).
3. Attach either the side discharge attachment or lower the mulch cover and secure with the two wingnuts.

Mowing And Bagging Tips

1. For a lawn to look better, check the cutting level of the mower housing. See "How To Level The Mower Housing" in the Maintenance section.
2. For the mower housing to cut level, make sure the tyres have the correct amount of air pressure.
3. Every time you use the unit, check the blade. If the blade is bent or damaged, immediately replace the blade. Also, make sure the nut for the blade is tight.
4. Keep the blade(s) sharpened. Worn blades will cause the ends of the grass to turn brown.

5. Do not cut or bag grass that is wet. Wet grass will not discharge correctly. Let the grass dry before cutting.
6. Use the left side of the mower housing to trim near an object.
7. Discharge the cut grass onto the mowed area. The result is a more even discharge of cut grass.
8. When you mow large areas, start by turning to the right so that the cut grass will discharge away from shrubs, fences, driveways, etc. After one or two rounds, mow in the opposite direction making left turns until finished.
9. If the grass is very high, cut two times to decrease the load on the engine. First cut with the mower housing in the highest position and then lower the mower housing for the second cut.
10. For better engine performance and an even discharge of the cut grass, always operate the engine with the throttle in FAST position.

11. When you use a bagger, operate the engine with the throttle in FAST position and the shift lever in first or second gear.
12. For better cutting performance and a quality cut, mow with the shift lever in one of the slower speeds.
13. After each use, clean the bottom and top of the mower housing for better performance. Also, a clean mower housing will help prevent a fire.

Mulching Tips

When you use a mulcher attachment, the grass is cut into very small pieces. These small pieces will quickly break down. Because the nutrients are returned to the soil, the lawn will need less fertilizer. To correctly mulch the grass, follow the steps below.

1. Set the throttle in the FAST position. Operate the mower at a slower ground speed. If ground speed is too fast, the grass will not have an even cut.

2. Keep a sharp edge on the blade. A blade that is not sharp will cause the ends of the grass to become brown.
3. Make sure the grass is dry. Wet grass is difficult to cut.
4. Set the height of the mower housing so that only the top third of the grass is cut. If the grass is too high, set the height of the mower housing to the maximum height. Then, lower the mower housing for the second cut. Also, instead of using the full width of the mower housing, mulch at half the width.
5. Clean the bottom of the mower housing. Grass and other debris can keep the mower from working correctly.
6. If the grass grows fast, mulch more often.
7. If an area needs improvement, mulch a second time.

MAINTENANCE CHART

FREQUENCY	MAINTENANCE REQUIRED	COMMENTS
Daily or before each use	Maintenance engine.	Refer to the Engine Owner's Manual .
	Examine blade(s).	Check for cracks, wear, and excessive damage.
	Remove debris from unit and mowing area.	
	Examine all rotating and sliding parts.	
	Check tire inflation.	Refer to the Maintenance section.
	Verify that the mower housing is level.	Refer to the Maintenance section.
	Examine V-belts.	Check for cracks, wear, and excessive damage.
	Check brake operation.	Refer to the Operation and Maintenance sections.
After completion of first 5 hours	Change oil.	Refer to the Engine Owner's Manual .
After 25 hours	Maintenance engine.	Refer to the Engine Owner's Manual .
	Remove, examine, sharpen, and balance blade(s).	Refer to Maintenance section.
	Check adjustments: a. Blade Rotation Control b. Brake c. Clutch d. Steering	Refer to Maintenance section.
	Lubricate chassis and mower housing.	Refer to Where to Lubricate instructions.
	Check the muffler: a. Torque b. For wear or burn out c. Condition of spark arrestor, (if applicable).	Refer to Maintenance section.
Before storage of 30 days or more	Prepare engine for storage.	Refer to the Engine Owner's Manual .
	Drain fuel system.	Refer to warnings in the Owner's Manual .
	Add fuel stabilizer.	Refer to the Engine Owner's Manual .
	Prepare battery for storage: a. Remove from unit. b. Fully charge. c. Move to cool dry place.	

MAINTENANCE

NOTE: Illustrations and pictorials begin on page 2.

General Recommendations

- The owner's responsibility is to maintain this product. This will extend the life of the product and is also necessary to maintain warranty coverage.
- Check the spark plug, drive brake, lubricate the unit, and clean the air filter once a year.
- Check the fasteners. Make sure all fasteners are tight.
- Follow the Maintenance section to keep the unit in good operating condition.



WARNING: Before you make an inspection, adjustment, or repair to the unit, disconnect the spark plug lead. Remove the wire from the spark plug to prevent the engine from starting by accident.

NOTE: Torque is measured in foot pounds (metric Nm). This measurement describes how tight a nut or bolt must be. The torque is measured with a torque wrench.

F-010604J

Inspect Blade (Figure 13)



WARNING: Before you inspect or remove the blade, disconnect the spark plug lead. If the blade hits an object, stop the engine. Check the unit for damage. The blade has sharp edges. When you hold the blade, use gloves or cloth material to protect your hands.

If you keep the **blade (1)** sharp and inspect the blade for damage, the blade will cut better and be more safe to operate. Frequently check the blade for excessive wear, cracks, or other damage. Frequently check the **nut (3)** that holds the **blade (1)**. Keep the **nut (3)** tight. If the blade hits an object, stop the engine. Disconnect the spark plug lead. See if the blade is bent or damaged. Check the **blade adapter (5)** for damage. Before you operate the unit, replace damaged parts with original equipment parts. See the authorized Hayter dealer in your area. Every three years, have an authorized service person inspect the blade or replace the old blade with an original equipment part.

How To Remove And Install The Blade (Figure 13)

- Remove the mower housing. See the instructions on "How To Remove The Mower Housing".
- Use a piece of wood to keep the blade from rotating.
- Remove the **nut (3)** that holds the **blade (1)**.

- Check the **blade (1)** and the **blade adapter (5)** according to the instructions for "Inspect Blade". Replace a badly worn or damaged **blade** with an original equipment blade. See an authorized Hayter dealer in your area.
- Clean the top and bottom of the mower housing. Remove all the grass and debris.
- Mount the **blade (1)** and **blade adapter (5)** on the **mandrel (6)**.
- Mount the **blade (1)** so that the **hi-lift edges (7)** are up. If the **blade** is upside down, the **blade** will not cut correctly and can cause an accident.
- Fasten the **blade (1)** with the original washers and **nut (3)**. Make sure the outside rim of the **Belleville washer (2)** is against the **blade (1)**.
- WARNING:** Always keep the **nut (3)** tight that holds the **blade (1)**. A loose nut or blade can cause an accident.
- Tighten the **nut (3)** that holds the **blade (1)** to a torque of 30 foot pounds (41,5 Nm).
- Install the mower housing. See "How To Remove The Mower Housing".


How To Check The Blade Rotation Control



WARNING: To prevent an injury, the blade rotation control must operate correctly.

In normal usage, the blade rotation control will not require an adjustment. However, if the cut-

ting performance decreases or the quality of cut is poor, make the following changes.

1. When you mow, make sure the throttle control is in the FAST position.
 2. **(Figure 6)** Move the blade rotation control (1) to the **DISENGAGE position (8)**.
 3. Stop the engine. Disconnect the spark plug lead.
 4. Check the blade(s). Keep a sharp edge on the blade(s). A blade that is not sharp will cause the tips of the grass to become brown.
 5. If the quality of cut has not improved, replace the mower drive belt. See "How To Replace The Mower Drive Belt". If the replacing the belt does not correct the problem, take the unit to an authorised Hayter dealer.
 6. Move the **blade rotation control (1)** to the **DISENGAGE position (8)**. Stop the engine. Disconnect the spark plug lead.
 7. **(Figure 14)** Check the operation of the blade brake. Rotate the pulley with your hand. Make sure that the **brake pad (7)** is pressed tightly against the pulley.
-  **WARNING: If the brake pad (7) does not press tightly against the pulley, take the unit to an authorised Hayter dealer.**
8. **(Figure 6)** Move the **blade rotation control (1)** to the **ENGAGE position (9)**.
 9. **(Figure 14)** Check the pads for the **blade brake (7)**. If the pads are excessively worn or damaged, replace the brake pad assemblies. Correct replacement parts and assistance are available from an authorised Hayter dealer.
 10. Attach the spark plug lead. Mow for a short distance and again check the operation of the blade rotation control.
 11. When you move the blade rotation control to the DISENGAGE position, all movement will stop within five seconds. If there is movement of the belt or the blades continue to rotate, engage and disengage the blade rotation control five times to remove any excess rubber from a new mower drive belt. If you need assistance, take the unit to an authorised Hayter dealer.


How To Adjust The Shift Lever (Figure 15)

If the NEUTRAL position on the shift lever does not match neutral on the gearbox, adjust the shift lever as follows.

1. Stop the engine.
2. Disconnect the **adjuster nut (2)** from the **shifter yoke (3)**.
3. Make sure the shift lever is in the NEUTRAL position.
4. Push the unit forward. Make sure the gearbox is in neutral.
5. To align the **adjuster nut (2)** with the hole in the **shifter yoke (3)**, turn the **adjuster nut (2)**.
6. Connect the **adjuster nut (2)** to the **shifter yoke (3)**.
7. Make sure the NEUTRAL position on the shift lever matches neutral on the gearbox.

How To Check And Adjust The Clutch (Figure 16)

If the motion drive belt is loose, the clutch will slip when; going up a hill, pulling a heavy load, or the unit will not move forward. Adjust the clutch as follows.


 **WARNING: Before you make an inspection, adjustment, or repair to the unit, disconnect the spark plug lead to prevent the engine from starting by accident.**

1. Check the routing of the motion drive belt. Make sure the belt is installed correctly and is inside all the belt guides.
2. Remove the **cotter pin (1)**, **washer (2)**, and **brake spring (3)** from the **adjustable nut (4)**.
3. Disconnect the **adjustable nut (4)** from the **brake lever assembly (5)**.
4. Align the hole in the **brake lever (5)** with the rear of the slot in the **frame**.
5. Push the **clutch rod (6)** toward the rear. Turn the **adjustable nut (4)** until the nut will fit through the hole in the **brake lever (5)**.
6. Assemble the **adjustable nut (4)** to the **brake lever (5)** and to the **brake spring (3)**. Fasten with the **washer (2)** and **cotter pin (1)**.
7. If the belt still slips after the clutch has been adjusted, then the motion drive belt is worn or damaged and must be replaced. See "How To Replace The Motion Drive Belt".

How To Check And Adjust The Drive Brake (Figure 17)


Completely push the clutch/brake pedal forward. Set the parking brake. Move the shift lever to the neutral (N) position and push the unit. If the rear wheels rotate, adjust or replace the brake pads. Adjust the **drive brake (1)** as follows.


1. The location of the **drive brake (1)** is on the left side of the **gearbox (3)**.
2. Make sure the parking brake is set and the shift lever is in neutral (N). Turn the **hex nut (2)** in a clockwise direction until the rear wheels do not turn when the unit is pushed forward.
3. Release the parking brake and push the unit. If the unit does not roll, turn the **hex nut (2)** in a counter-clockwise direction until the unit rolls.
4. Set the parking brake. Push the unit. If the rear wheels do not turn, the **drive brake (1)** is correctly adjusted. Release the parking brake.

 **WARNING: If you cannot correctly adjust the drive brake, replace the brake pads. Correct replacement parts and assistance are available from an authorised Hayter dealer.**

How To Remove The Battery (Figure 3)


To charge or clean the **battery (1)**, remove the **battery (1)** from the unit as follows.

 **WARNING: To prevent sparks, disconnect the black battery cable (8) from the negative (-) terminal before you disconnect the red cable (5).**


 **WARNING: The battery contains sulphuric acid which is harmful to the skin, eyes and clothing. If the acid gets on the body or clothing, wash with water.**

1. Disconnect the **black cable (8)** from the negative (-) terminal.
2. Disconnect the **red cable (5)** from the **positive (+) terminal (4)**.
3. To disconnect the **battery retainer (2)** from the **battery tray (3)**, push in on the lower end of the **battery retainer (2)**.
4. Remove the **battery (1)** from the right side of the unit.

How To Charge The Battery (Figure 3)

 **WARNING: When you charge the battery, do not smoke. Keep the battery away from any sparks. The fumes from the battery acid can cause an explosion.**


1. Before you charge the **battery (1)**, remove the **battery (1)** from the unit.
2. To charge the **battery (1)**, use a 12 volt battery charger. Charge at a rate of 6 amperes for 1 hour.
3. Install the **battery (1)**.

 **WARNING: To prevent sparks, fasten the red cable to the positive (+) terminal before you connect the black cable.**

4. Fasten the **red cable (5)** to the **positive (+) terminal (4)** with the fasteners as shown.
5. Fasten the **black cable (8)** to the negative (-) terminal with the fasteners as shown.
6. Connect the **battery retainer (2)** to the **battery tray (3)**.

How To Level The Mower Housing

If the mower housing is level, the blade will cut easier and the lawn will look better.

 **WARNING: Before you make an inspection, adjustment, or repair to the unit, disconnect the spark plug lead to prevent the engine from starting by accident**

1. Make sure the unit is on a hard flat surface.
2. Check the air pressure in the tyres. If the air pressure is incorrect, the mower housing will not cut level. Make sure the tyres are inflated to: Front Tyres 1,5 BAR (22 PSI), Rear Tyres 1 BAR (14 PSI).
3. Open the **cover (5)**.
4. **(Figure 18)** Move the **lift lever (1)** to the **LEVEL ADJUSTMENT position (2)**.
5. **(Figure 18 and 19)** Loosen the front and rear **adjuster knobs (4)**. Make sure both sides of the mower housing are setting on a flat surface. Also, make sure the lift links and adjuster plates are loose and can easily move up or down.
6. Tighten the front and rear **adjuster knobs (4)**. Make sure the **adjuster knobs (4)** are tight. If necessary, use a wrench to tighten the **adjuster knobs (4)**. For plastic **adjuster knobs (4)**, tighten to a torque of 7 foot pounds (9,5 N-m). For metal **adjuster knobs (4)**, tighten to a torque of 10 foot pounds (13,5 N-m).

7. (Figure 20) Raise the lift lever (1) from the LEVEL ADJUSTMENT position (2) to a CUTTING HEIGHT position (3).
8. Close the cover (5).
9. Mow for a short distance. If the height of cut is not level, repeat the above steps.

CAUTION: Do not operate with the mower housing in the LEVEL ADJUSTMENT position (2). If you operate in the LEVEL ADJUSTMENT position (2), the mower housing and blade will be damaged.

Where To Lubricate (Figure 21)



Models with grease fittings:
Lubricate with grease gun.
Apply grease with a brush to the areas shown.
Lubricate the areas shown with engine oil.

NOTE: Apply grease to the steering gear assembly.

CAUTION: If the unit is operated in dry areas that have sand, use a dry graphite spray to lubricate the unit.

Check The Tyres

Check the air pressure in the tyres. Tyres with too much air pressure will cause the unit to ride rough. Also, the wrong air pressure will keep the mower housing from cutting level. The correct air pressure is: Front Tyres 1,5 BAR (22 PSI), Rear Tyres 1 BAR (14 PSI).

How To Replace The Motion Drive Belt (Figure 22)

1. Remove the mower housing. See the instructions on "How To Remove The Mower Housing".
2. Completely push the pedal forward and engage the parking brake.
3. Remove the idler pulley (1).
4. Loosen the belt guides (5) next to the drive pulley (4).
5. Remove the motion drive belt (3) from the drive pulley (4).
6. Remove the motion drive belt (1) from the stack pulley (2).
7. A correct replacement part or assistance is available from an authorised Hayter dealer in your area.
8. To install the motion drive belt, reverse the above steps.
9. Check the routing of the motion drive belt (1). Make sure the motion drive belt is installed correctly on the idler pulley (2). Make sure the motion drive belt (1) is inside all the belt guides.
10. Before you use the unit, check the adjustment of the clutch. See the instructions "How To Check And Adjust The Clutch".
11. Install the mower housing. See the instructions "How To Install The Mower Housing".

How To Replace The Mower Drive Belt (Figure 14)

1. Remove the mower housing. See the instructions on "How To Remove The Mower Housing".
 2. Pull the belt retainer (1) away from the idler pulley (2) and remove the mower drive belt (3).
 3. Pull the brake pad (7) away from the jackshaft pulley (4) and remove the mower drive belt (3).
- NOTE:** Replace the mower drive belt (3) with an original equipment belt from an authorised Hayter dealer.
4. A correct replacement part or assistance is available from an authorised Hayter dealer in your area.
 5. To install the motion drive belt, reverse the above steps.
 6. Install the mower housing. See the instructions on "How To Install The Mower Housing".
 7. Before you mow, check the blade rotation control. See the instructions on "How To Adjust The Blade Rotation Control".

How To Remove The Mower Housing

1. (Figure 6) Move the blade rotation control (1) to the DISENGAGE position (8).
 2. (Figure 18) Move the lift lever (1) to the LEVEL ADJUSTMENT position (2).
- NOTE:** Make sure the lift lever (1) is locked in the LEVEL ADJUSTMENT position (2).
3. (Figure 25) Remove the hair pins and the washers from the rear suspension arms (3). See illustrations "C" and "D".
 4. Remove the hair pins and washers from the suspension links (4). See illustrations "A" and "B".
 5. Disconnect the extension spring (5) from the blade control rod (6). See illustration "E".
 6. Disconnect the front hanger (9) from the frame support. See illustration "F".
 7. Remove the mower drive belt (7) from the stack pulley (8). See illustration "G".
 8. Pull the mower housing away from the right side of the unit.
 9. To operate without the mower housing, move the lift lever to the TOP position.
 10. To install the mower housing, reverse the above steps.
 11. Make sure the mower drive belt (7) is inside all the belt guides (10) and is also below the spacer tube (11).

How To Install The Wheels

If the wheels must be removed for service, make sure they are installed as follows:

Front Wheel (Figure 23)

1. Make sure the valve stem (2) is to the outside. Slide the front wheel (1) onto the spindle (3).

2. Fasten the front wheel (1) with washers (4) and cotter pin (5). Bend the ends of the cotter pin (5) apart to keep the front wheel (1) on the spindle (3).
3. If your model has hub caps (6), install the hub caps (6). Make sure the washers (4) hold the hub caps (6) in place.

Rear Wheel (Figure 24)

1. Install the washers (7) and spacer (8) onto the axle (9).
2. Mount the square key (10) in the key slot (11).
3. Make sure the valve stem (2) is to the outside. Align the slot in the rear wheel (12) with the square key (10). Slide the rear wheel (12) on the axle (9).
4. Fasten the rear wheel (12) with washer (7) and e-ring (13).
5. If your model has hub caps (6), install the hub caps (6). Make sure the washer (7) holds the hub caps (6) in place.

How To Replace The Fuse

If the fuse is blown, the engine will not start. Remove the fuse and replace with a 15 amp automotive fuse.

Storage (over 30 days)

At the end of each year, prepare the unit for storage as follows.

1. Drain the fuel from the carburettor and the fuel tank. Change the engine oil. See the engine manufacturer's instructions.
2. Clean the entire unit.
3. Charge the battery.

How To Remove The Connector Tube

For good bagging performance, the connector tube must be clean and free from grass and debris. Remove and clean the connector tube as follows.

To Remove

1. (Figure 6) Move the blade rotation control attachment clutch (1) to the DISENGAGE position (8).
2. Move the shift lever to the neutral (N) position.
3. (Figure 7) Engage the parking brake (6).
4. Stop the engine.
5. Move the lift lever to the middle cutting position.
6. (Figure 36) Lift the cover (1) and remove the grass bag assembly (2).
7. (Figure 38) Disconnect the retaining clip (4) from the connecting tube (5).
8. (Figure 36) Pull the connecting tube (5) back through the hole in the bag mounting plate (7).
9. Clean the connector tube (5) with soap and water.

How To Remove The Grass Bagger

1. Remove the connecting tube. See "How To Remove The Connector Tube".
2. (Figure 31) Loosen the two knobs (16) at the bottom of the bag mounting plate (15).

3. Lift the **bag mounting plate (15)** off of the **shoulder bolts (11)**.
4. **(Figure 33)** Remove the **wingnuts (1)** that secure the **extension tube (4)** to the **mower housing (2)**. Remove the **extension tube (4)**.
5. Close the **mulch cover (3)** and secure with the **wingnuts (1)**.

How To Order Replacement Parts

The replacement parts are shown either on the back pages of this Instruction Book or in a separate Parts List Book.

Use only manufacturer's authorized or approved replacement parts.

In order to obtain proper replacement parts you must supply the model number of your mower (see nameplate).

If you are unable to obtain parts or service in the manner outlined above, then contact:

Hayter Ltd, Parts Department, Spellbrook Lane West, Spellbrook, Bishop's Stortford. Herts CM23 4BU. England

Replacement parts for the engine, transaxle, or transmission, are available from the manufacturer's authorized service centre found in the commercial pages of the telephone directory. Also, see the individual engine or transmission warranties to order replacement parts.

When ordering the following information is required:

- (1) The Model Number
- (2) Serial Number
- (3) Part Number
- (4) Quantity

TROUBLE SHOOTING CHART

PROBLEM: The engine will not start.

1. Follow the steps, "How To Start The Engine" in this book.
2. Electric-Start Models: Clean the battery terminals. Tighten the cables.
3. Check for a loose wire. Tighten the limit switches. (See the wiring diagram.)
4. Drain the fuel tank. Clean the fuel line. Replace the fuel filter.
5. Remove the spark plug(s). Move the throttle to the SLOW position. Turn the ignition key to the ON position. Try to start the engine several times. Install the spark plug.
6. Replace the spark plug.
7. Adjust the carburettor.

PROBLEM: The engine will not turn over.

1. Follow the steps, "How To Start The Engine" in this book.
2. Electric-Start Models: Charge the battery.
3. Replace the fuse.
4. Check the wiring harness for damage or a loose connection. Repair the damaged wire.
5. Electric-Start Models: replace the solenoid. Recoil-Start Models: replace the module.

PROBLEM: The engine is difficult to start.

1. Adjust the carburettor.
2. Replace the spark plug.
3. Replace the fuel filter.

PROBLEM: The engine does not run smooth or has a loss of power.

1. Check the oil.
2. Clean the air filter.
3. Clean the air screen.
4. Replace the spark plug.
5. The engine is working too hard. Use a lower gear.
6. Adjust the carburettor.
7. Replace the fuel filter.

PROBLEM: The engine does not run smooth at fast speed.

1. Replace the spark plug.
2. Adjust the throttle control.
3. Clean the air filter.
4. Replace the fuel filter.

PROBLEM: The engine stops when the blades are engaged.

1. Check the wiring harness for damage or a loose connection. Repair the damaged wire.
2. Grass bag must be installed (applies only to model with rear discharge grass bag).

PROBLEM: On slopes, the engine stops.

1. Mow up and down slopes. Never mow across a slope.

PROBLEM: The engine will not idle.

1. Replace the spark plug.
2. Clean the air filter.
3. Adjust the carburettor.
4. Adjust the throttle control.
5. Drain the fuel tank. Clean the fuel line. Replace the fuel filter.

PROBLEM: A hot engine causes a decrease in power.

1. Clean the air screen.
2. Check the oil.
3. Adjust the carburettor.
4. Replace the fuel filter.

PROBLEM: Excessive vibration.

1. Replace the blade.
2. Check for loose engine bolts.
3. Decrease the air pressure in the tyres.
4. Adjust the carburettor.
5. Check for a damaged belt or damaged pulley. Replace the damaged parts.

PROBLEM: The grass does not discharge correctly.

1. Stop the engine. Clean the mower housing.
2. Raise the height of cut.
3. Replace or sharpen the blade(s).
4. Move the shift lever to a slower speed.
5. Move the throttle control to the FAST position.
6. Replace the spring for the blade idler.
7. Clean the extension tube and the connector tube (applies only to model with rear discharge grass bag).

PROBLEM: The mower housing does not cut level.

1. Check the air pressure in the tyres.
2. Adjust the level of the mower housing.
3. Check the front axle. If the front axle does not freely pivot, loosen the axle bolt(s).

PROBLEM: The mower blades will not rotate.

1. Check the mower drive belt. Make sure the belt is installed correctly.
2. Replace the mower drive belt.

PROBLEM: The unit will not move when the clutch is engaged.

PROBLEM: The unit will not move when the brake is released and the speed control pedal is depressed.

1. Check the motion drive belt. Make sure the belt is installed correctly.
2. Adjust the clutch.
3. Replace the motion drive belt.
4. Release the Automatic Drive Disconnect under the seat.

PROBLEM: The unit moves slower or stops when the clutch is engaged.

PROBLEM: The unit moves slower or stops when the speed control pedal is depressed.

1. Adjust the clutch.
2. Replace the motion drive belt.

PROBLEM: When the clutch/brake pedal is released, belt noise can be heard.

PROBLEM: When the brake pedal is released, belt noise can be heard.

1. Temporary belt noise does not change the operation of the unit. If belt noise is continuous, check the routing of the belt. Make sure the belt is inside all belt guides.
2. If the noise is continuous, adjust the clutch.

PROBLEM: The rear wheels spin over uneven terrain.

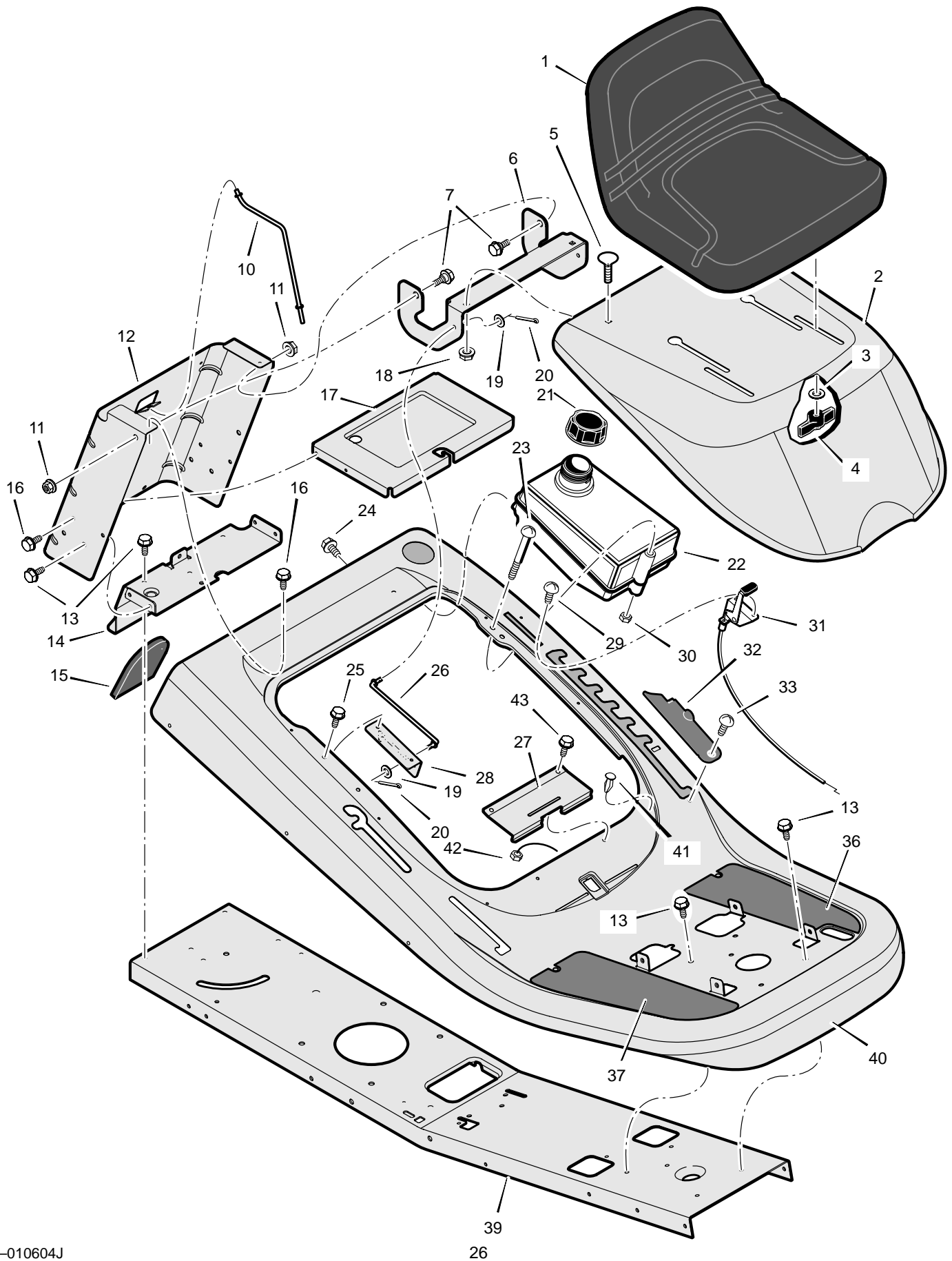
1. Check the front axle. If the front axle does not freely pivot, loosen the axle bolt(s).

PROBLEM: The transaxle is difficult to shift between gears with the engine running and the clutch depressed.

1. Check the clutch adjustment to make sure the belt stops when the clutch pedal is depressed with the transaxle in (N) neutral.
2. Check the belt guides around the transaxle drive pulley. Make sure the belt guides do not touch the pulley.

MODEL 309012x11A

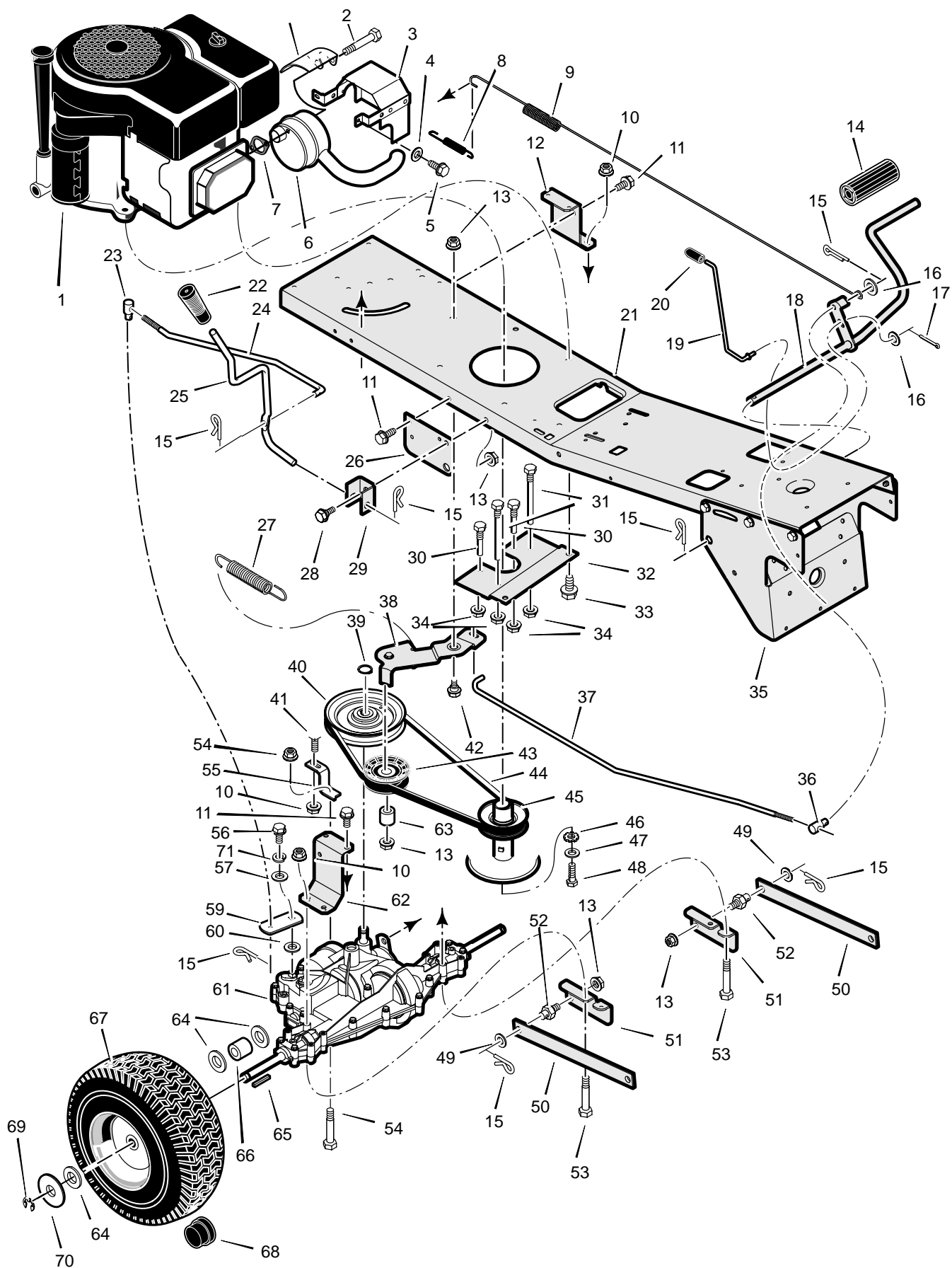
REPAIR PARTS CHASSIS & HOOD



MODEL 309012x11A

REPAIR PARTS CHASSIS & HOOD

Key No.	Description	Part No.	Key No.	Description	Part No.
1	Seat	690566	23	Screw	6x111
2	Hood	1401027-848	24	Screw	710246
3	Washer	17x47	25	Screw	710197
4	Bolt, Wing	1001054	26	Rod, Hood Prop	1401110
5	Bolt, Carriage	2x53	27	Spring, Seat Deck	1401041-853
6	Bracket, Hinge	1401036	28	Bracket, Prop Rod	1401056-853
7	Bolt, Shoulder	9x29	29	Screw	26x201
10	Rod, Battery	1401113	30	Nut, NY-Lock	15x116
11	Nut, Flange	15x84	31	Control, Throttle	1401169
12	Plate, Rear	1401025-853	32	Cover, Detent	1401084
13	Screw	26x249	33	Bolt, Shoulder	9x47
14	Plate, Hitch	1401050-853	36	Footmat, Left	1401229
15	Cover	1401086	37	Footmat, Right	1401228
16	Screw	26x263	39	Frame	1401029-853
17	Tray, Battery	1401076-853	40	Deck, Seat	1401026-848
18	Nut, Flange	15x79	41	Bumper	94744
19	Washer	17x47	42	Nut	782585
20	Pin, Cotter	30x20	43	Screw	25x2
21	Cap, Fuel Tank	92317	--	Book, Instruction	F-010604J
22	Tank, Fuel	1401071			



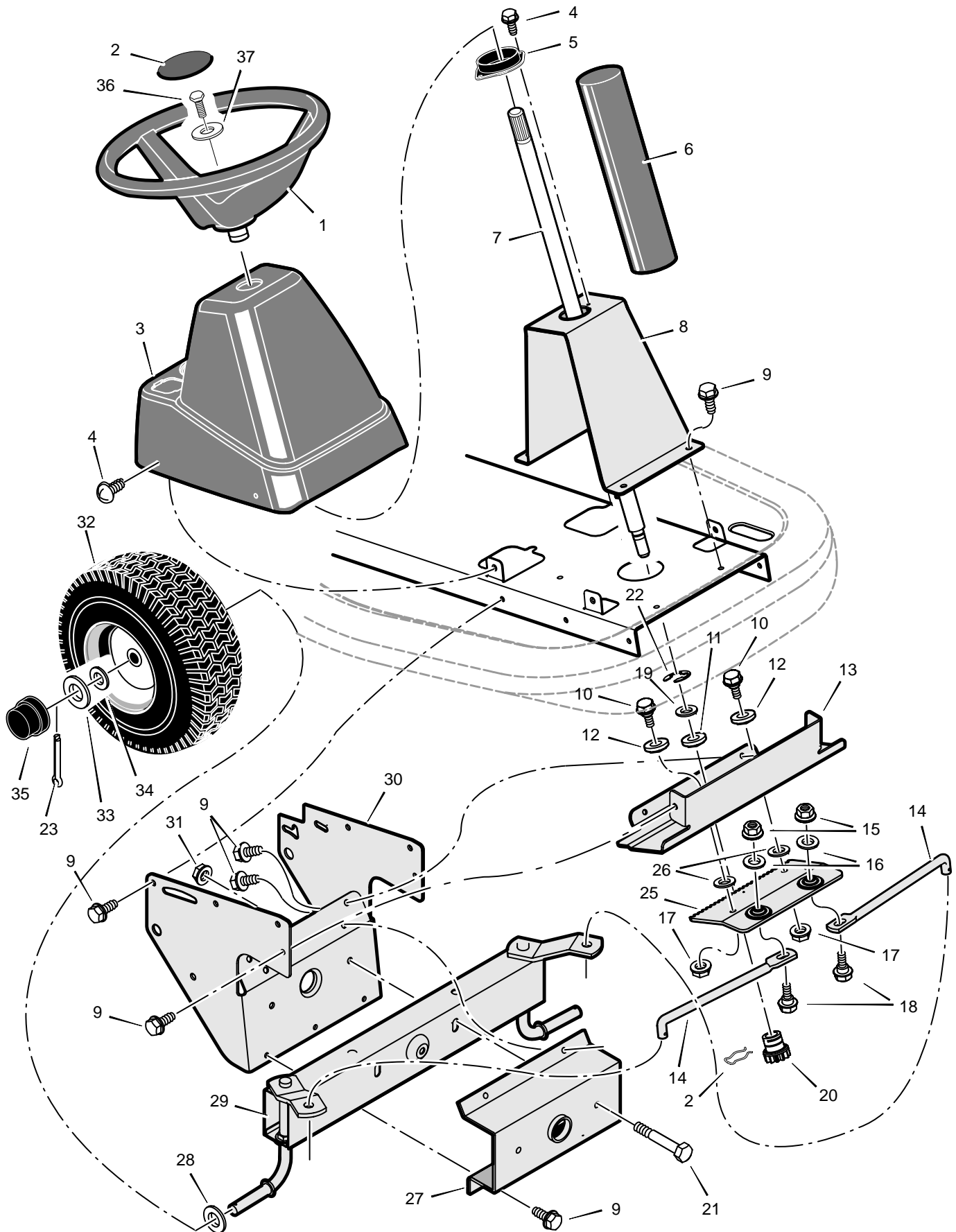
MODEL 309012x11A

REPAIR PARTS MOTION DRIVE

Key No.	Description	Part No.	Key No.	Description	Part No.
1	Engine, Briggs & Stratton	1401154	36	Nut, Adjusting	94815
2	Bolt, Hex – Muffler	1x118	37	Rod, Clutch	1401078
3	Shield Assembly, Heat	1401152	38	Clutch Arm Assembly	1401128
4	Lockwasher	18x32	39	Ring, Retainer	11x7
5	Screw	25x2	40	Pulley, Drive	1401077
6	Muffler	1401153	41	Bolt, Carriage	2x53
7	Gasket, Muffler	91309	42	Bolt, Shoulder	9x39
8	Spring, Extension	165x75	43	Pulley, Idler	690410
9	Spring, Extension	165x148	44	Belt, Motion Drive	37x110
10	Nut	15x88	45	Pulley, Split Stack	1401066
11	Screw	26x249	46	Washer, Star	19x35
12	Bracket, Transaxle –Left	1401042	47	Washer	17x170
13	Nut, Flange	15x84	48	Bolt, Hex	1x140
14	Cover, Pedal	21544	49	Washer	17x102
15	Pin, Cotter	30x20	50	Arm, Rear	1401031
16	Washer	17x53	51	Bracket, Rear Hanger	1401039
17	Pin, Cotter	30x20	52	Pin, Threaded Shoulder	94067
18	Pedal Assembly	1401127–853	53	Bolt, Hex	1x155
19	Rod, Parking Brake	1401112	54	Bolt	180087
20	Grip, Parking Brake Rod	91079	55	Bracket, Torque Reactor	1401051
21	Frame	1401029–853	56	Screw	1x145
22	Grip, Shift Lever	92697	57	Washer, Shift Yoke	710657
23	Nut, Adjusting	1401148	59	Yoke, Shift	1401093
24	Link, Shift	1401122	60	Washer	17x148
25	Lever, Shift	1401111	61	Transaxle, Peerless	1401091
26	Bracket, Lift Pivot	1401032	62	Bracket, Transaxle	1401042
27	Spring, Extension	165x147	63	Spacer	690369
28	Bolt, Shoulder	9x39	64	Washer	17x160
29	Bracket, Pivot	1401043	65	Key, Square	56534
30	Guide, Belt –Short	1401104	66	Spacer, Rear Wheel	1401103
31	Guide, Belt –Long	1401105	67	Wheel, Rear –15”	1401120
32	Plate, Belt Guide	1401057	68	Cap, Hub	94618
33	Bolt	25x7	69	E–Ring	11x3
34	Nut, Flange	15x79	70	Washer	17x195
35	Bracket, Support	1401059	71	Lockwasher, Split	18x32

* When you order a tire, make sure to give the brand name of the tire so that the tread pattern on the tire will match.

** For information on Replacement Parts see the Central Parts Distributor in your area.

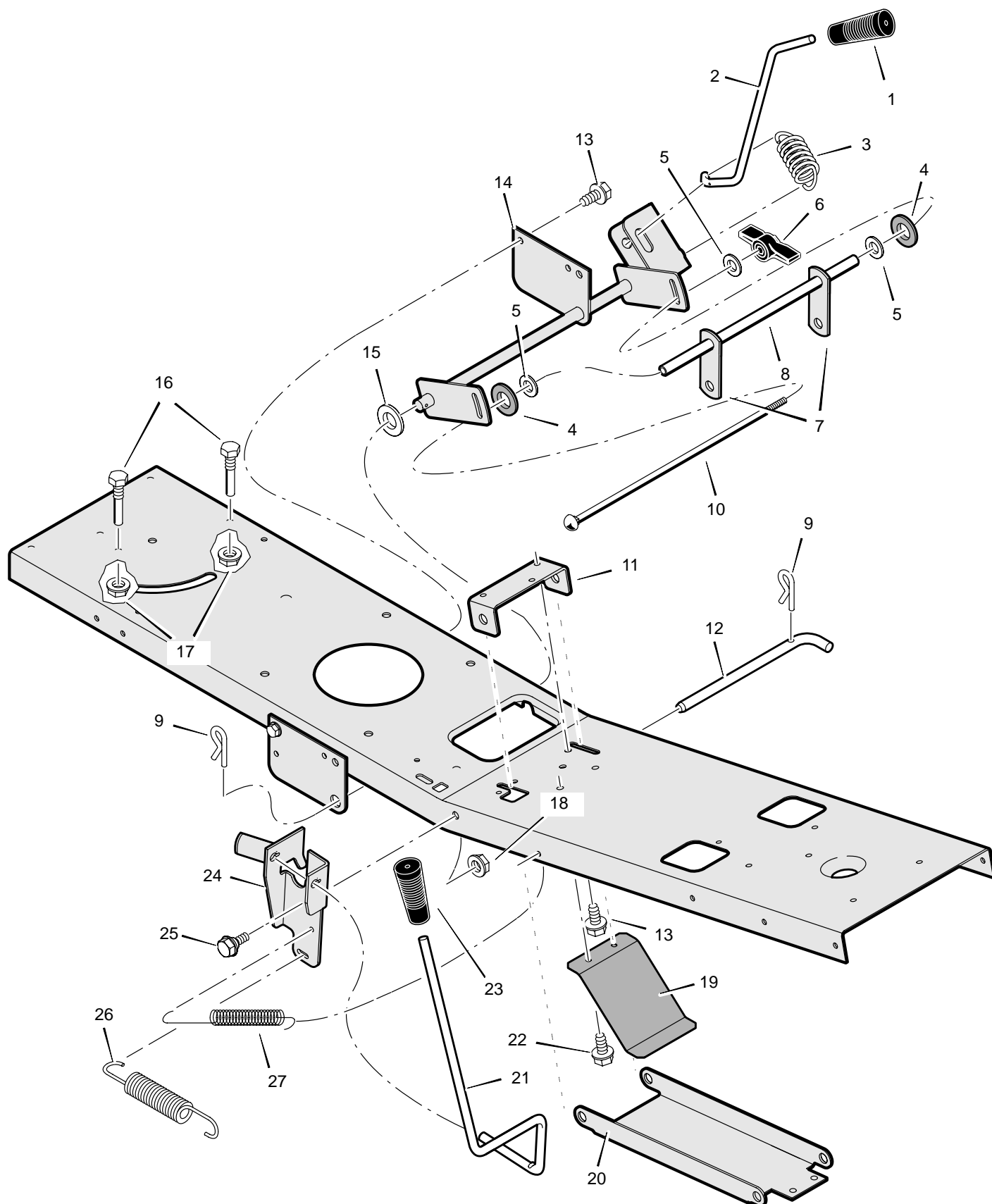


MODEL 309012x11A

REPAIR PARTS STEERING

Key No.	Description	Part No.	Key No.	Description	Part No.
1	Wheel, Steering	95185	19	Washer	17x118
2	Cap, Steering	711326	20	Gear, Pinion	1401099
3	Console, Low –Black	1401044	21	Bolt, Hex	1x146
--	Console, Low –Grey	1401045	22	E–Ring, Retainer	11x28
4	Screw	26x270	23	Pin, Cotter	137185
5	Bearing, Upper Steering	1401090	25	Rack, Steering	1401046
6	Tube, Steering	1401107	26	Washer	785373
7	Shaft, Steering	1401100	27	Bracket, Axle Front	1401060
8	Support, Steering	1401055	28	Washer	17x157
9	Screw	26x249	29	Axle & Spindle Assembly	1401126
10	Bolt, Shoulder	9x67	30	Bracket, Support	1401059
11	Bearing, Lower Steering	1401098	31	Nut, Flange	15x118
12	Roller	1401102	32	Wheel, Front	1401143
13	Plate, Gear Mounting	1401058	33	Washer	17x197
14	Link, Drag	1401123	34	Washer	17x157
15	Nut, Flange	15x84	35	Cap, Hub	94618
16	Washer	17x104	36	Bolt	711719
17	Nut, Flange	15x88	37	Washer	711720
18	Bolt, Hex	1x111			

* When you order a tire, make sure to give the brand name of the tire so that the tread pattern on the tire will match.



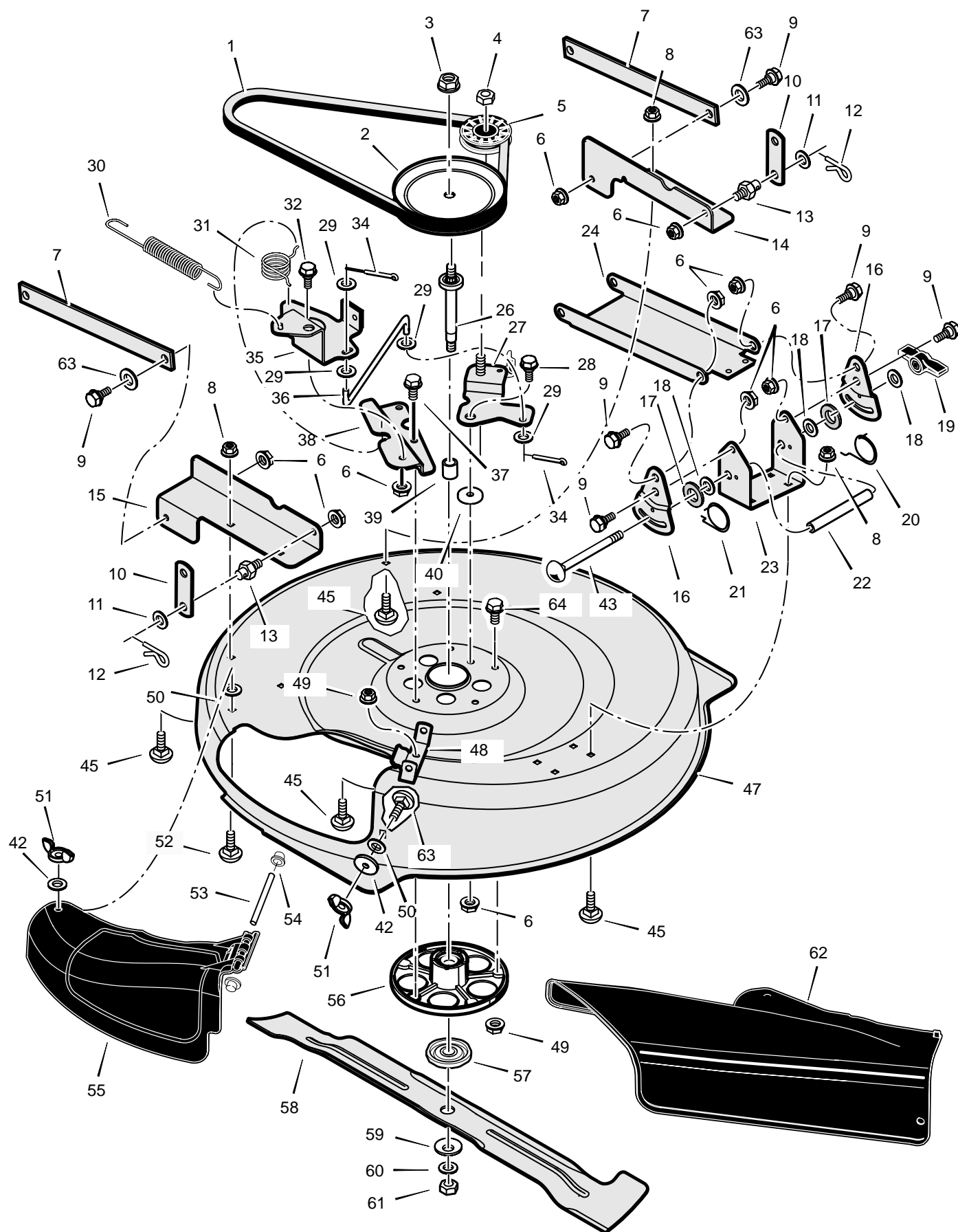
MODEL 309012x11A

REPAIR PARTS MOWER HOUSING SUSPENSION

Key No.	Description	Part No.	Key No.	Description	Part No.
1	Grip, Lift Lever	92697	15	Washer	17x165
2	Lever, Lift	1401117	16	Screw, Guide	93349
3	Spring, Extension	165x154	17	Nut, Flange	15x79
4	Pad, Friction	94137	18	Nut, Flange	15x84
5	Washer	17x45	19	Spring, Leaf	1401147
6	Wingnut	95004	20	Hanger, Front	1401040
7	Link, Lift	1401033	21	Lever, PTO	1401116
8	Tube, Spacer	1401096	22	Screw	26x263
9	Pin, Hair	31x4	23	Grip, PTO	94198
10	Bolt, Carriage	2x93	24	Bracket, PTO	1401199
11	Bracket, Front Hanger Pivot	1401030	25	Bolt, Shoulder	9x42
12	Pin, Front Hanger	1401118	26	Spring, Extension	165x149
13	Screw	26x249	27	Spring, Extension	165x92
14	Arm Assembly, Lifter	1401129			

MODEL 309012x11A

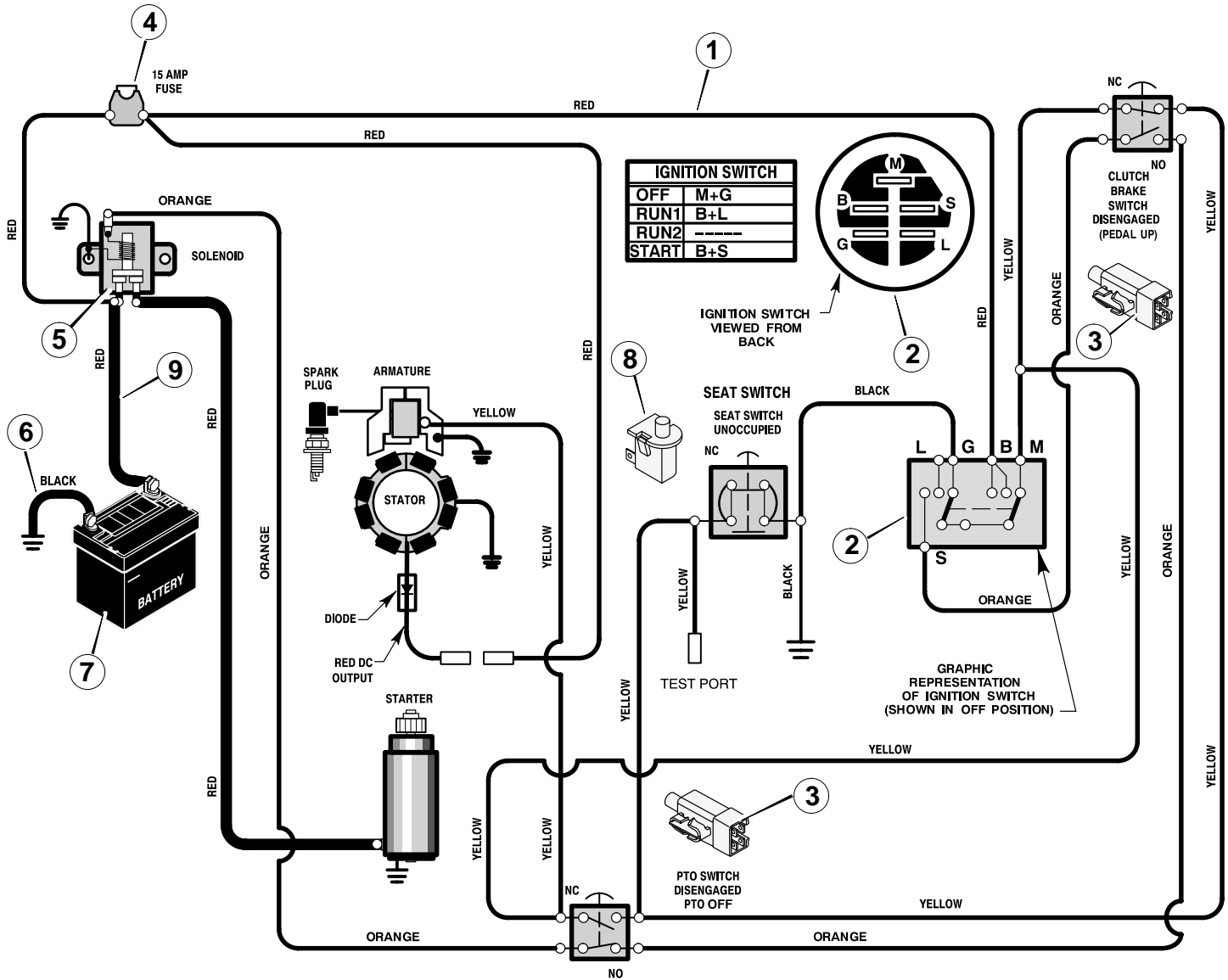
REPAIR PARTS MOWER HOUSING



MODEL 309012x11A

REPAIR PARTS MOWER HOUSING

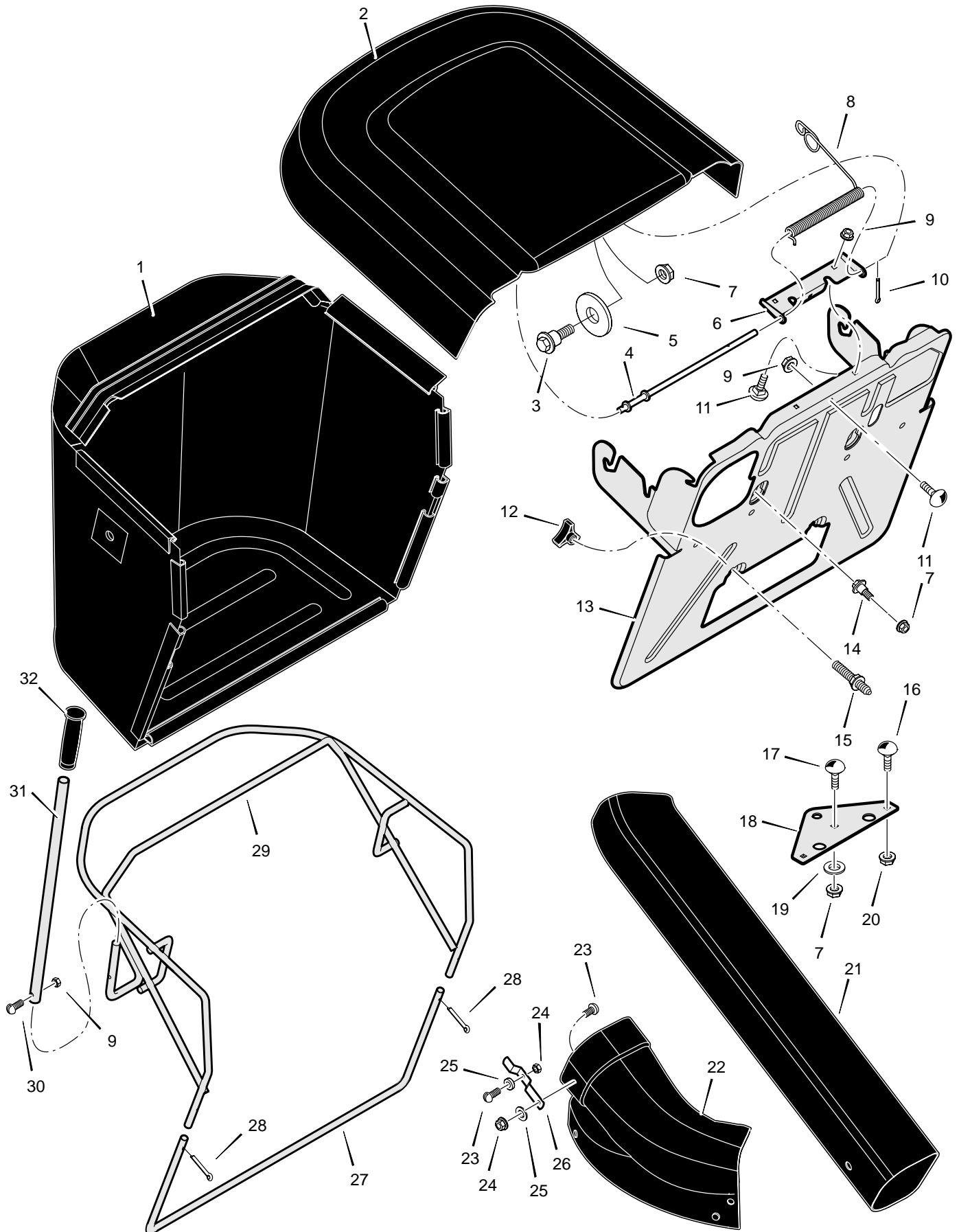
Key No.	Description	Part No.	Key No.	Description	Part No.
1	Belt, Blade Drive	37x111	32	Bolt, Shoulder	9x42
2	Pulley, Input	1401092	34	Pin, Cotter	30x20
3	Locknut	15x121	35	Arm Assembly, Brake	1401185
4	Nut, Flange	15x98	36	Link, Idler Arm	1401119
5	Pulley, Idler	690410	37	Bolt	25x7
6	Nut, Flange	15x84	38	Bracket, Brake Mounting	1401052
7	Arm, Rear	1401031	39	Spacer, Jackshaft	1401094
8	Nut, Flange	15x79	40	Washer	1401097
9	Bolt, Shoulder	9x58	42	Washer	19x45
10	Link, Lift	1401033	43	Bolt, Carriage	2x94
11	Washer	17x102	45	Bolt, Carriage	2x53
12	Pin, Hair	31x4	47	Housing, Blade	1401028
13	Pin, Threaded Shoulder	94067	48	Hinge, Mulching Cover	1401106
14	Bracket, Left Rear	1401047	49	Nut, Flange	15x88
15	Bracket, Right Rear	1401048	50	Nut, Speed	28x76
16	Plate, Adjustment	1401038	51	Wingnut	14x86
17	Pad, Friction	94137	52	Bolt, Carriage	2x74
18	Washer	17x45	53	Rod, Chute Deflector	91767
19	Wingnut	95004	54	Cap, Push	28x23
20	Spring, Left Torsion	166x43	55	Cover, Mulch	1401080
21	Spring, Right Torsion	166x42	56	Mandrel Housing	94305
22	Tube, Spacer	1401095	57	Adapter, Blade	92466
23	Bracket, Deck	1401037	58	Blade	1401079
24	Hanger, Front	1401040	59	Washer, Cup	17x166
26	Shaft, Splined	1401065	60	Washer	17x165
27	Arm, Idler	1401186	61	Nut, Blade Mount	15x100
28	Bolt, Shoulder	9x39	62	Deflector, Chute	1401081
29	Washer	17x47	63	Bolt, Carriage	2x74
30	Spring, Extension	165x149	64	Bolt	1x84
31	Spring, Torsion	166x46			



Key No.	Description	Part No.
1	Harness, Chassis Wire	250x103
2	Switch, Ignition	1401149
	Key, Ignition	327349
	Nut, Hex	
	Cap, Ignition	
3	Switch, Limit	94136
4	Fuse	54212
	Holder, Fuse	407078
5	Solenoid	94613
	Screw, Mounting	26x214
	Locknut	15x116
6	Cable, Battery Ground	24x37
	Screw, Ground Cable	
7	Battery	92739
	Bolt, Carriage	2x82
	Wingnut	14x79
8	Switch, Seat Sensor	94159
9	Cable, Red Batery	24x24
	Boot, Positive Terminal	690604

MODEL 309012x11A

REPAIR PARTS GRASS BAGGER



MODEL 309012x11A

REPAIR PARTS GRASS BAGGER

Key No.	Description	Part No.	Key No.	Description	Part No.
1	Bag, Cloth	1401173	17	Bolt, Carriage	2x57
2	Cover, Bag	1401188	18	Bracket, Hitch Extension	1401178–853
3	Bolt, Shoulder	9x13	19	Washer	17x104
4	Rod, Bag Lid	1401168	20	Nut	15x88
5	Washer	17x152	21	Tube, Connecting	1401089
6	Hinge, Bag Top	1401190–853	22	Tube, Extension	1401088
7	Nut	15x84	23	Bolt	6x91
8	Spring, Torsion	166x47	24	Wingnut	14x77
9	Nut	15x89	25	Washer	712440
10	Pin, Cotter	30x20	26	Spring, Leaf	1401175
11	Bolt, Carriage	2x82	27	Tube, Bag Frame	1401155–853
12	Knob	740227	28	Pin, Cotter	30x35
13	Assembly, Bag Plate & Hanger	1401182–853	29	Frame, Bag	1401167–853
14	Bolt, Shoulder	9x70	30	Bolt	1x94
15	Stud, Double End	6x110	31	Lever, Dump	1401141–853
16	Bolt, Carriage	2x53	32	Grip	1401176

(D) Übereinstimmungs–Bescheinigung

(GB) Certificate of conformity

(F) Certificat de conformité

(I) Certificato di conformità

(E) Certificado de conformidad

(NL) Conformiteitsverklaring

(P) Declaração de conformidade

(S) Konformitetsintyg

(N) Konformitetserklæring

(DK) Overensstemmelseserklæring

(SF) Vaatimustenmukaisuusilmoitus

Der Unterzeichnete / I the undersigned / Le soussigné / Il firmatario / El abajo
firmante / Ondergetekende / O abaixo assinado / Undertecknad /
Undertegnede / Undertegnet / Allekirjoittanut

MURRAY, INC.

bestätigt, daß der Rasenmäher / certify that the lawn mower / certifie que la
tondeuse à gazon / certifica che il tosaerba / certifica que la cortadora de
césped / bevestigt dat de grasmaaimachine / certifica que o cortador de grama
/ bekräftar härmed att gräsklipparen / attesterer at gressklipperen / bekraeftiger
hermed at denne græsslåmaskine / todistaa, että ruoholeikkuri

1. Bauart Category Categorie Categoria Categoría Categorie Categoria Kategori Kategori Kategori Kategoria	RASENTRAKTOR LAWNMOWER TONDEUSE A GAZON TORSERBA CORTADORA DE CESPED GRASMAAIMACHINE CORTADOR DE GRAMA GRÄSKLIPPARE GRESSKLIPPER GRÆSSLÅMASKINE RUOHONLEIKKURI
2. Fabrikmarke / Make / Marque / Marca / Marca / Merk / Marca /Fabriksmärke / Merke / Mærke / Merkki	MURRAY
3. Typ / Type / Type / Tipo / Tipo / Model / Tipo / Typ / Type / Type / Tyypä	10 HP / 30
4. Serienidentifizierung / Line Specification / Numéro de Série / Numero di serie / Número de serie / Seriennummer / Número de série / Seriennummer / Seriennummer / Seriennummer / Sarjanumero	309012x11A
5. Motor / Engine / Moteur / Motore / Motor / Motor / Motor / Motor / Motor / Motor / Moottori – Hersteller / Manufacturer / Fabricant / Produttore / Fabricante / Fabrikant / Fabricante / / Fabrikant / Fabrikant / Fabrikant / Valmistaja – Typ / Type / Type / Tipo / Tipo / Model / Tipo / Typ / Type / Type / Tyypä – Prüfdrehzahl u/min – Control of the speed's rotation rpm – Contrôle du régime de rotation t/mn – Controllo del regime di giri al minuto – Control de la velocidad de rotación rpm – Controle van de rotatie snelheid t/min. – Controle de velocidade de rotação rpm – Rotationhastighet varv per minut – Roteringshastighet rpm – Rotationshastighed rpm – Kiertonopeuden kontrolli kierrosta/min.	<u>BRIGGS & STRATTON</u> 28V707–1116–E1 2700

mit den Vorschriften der Richtlinie 84/538 EWG übereinstimmt / conforms to the specifications of Directive 84/538 EEG / est conforme aux spécifications de la directive CEE 84/538 / è conforme alle specifiche della direttiva CEE 84/538 / se conforma a las especificaciones de la directiva CEE 84/538 / in overeenstemming is met de specificaties van de Richtlijn 84/538 EEG / obedece as especificações da diretiva 84/538 C.E.E. / överensstämmer med specifikationerna i EWGs direktiv 84/538 / samsvarer med spesifikasjonene ifølge EF forskrift 84/538 / møder specifications direktivet 84/538 EØF / on direktiivin 84/538 EY spesifikaatioiden mukainen.

Garantierter Schalleistungspegel Guaranteed sound power level Niveau de puissance acoustique garanti Livello di potenza acustica garantito Nivel garantizado de potencia acústica Gewaarbordd niveau van geluidssterkte Nível de ruído motriz garantido Garanterad ljudstyrksnivå Garantert lydnivå Lydniveau garanti Taattu äänenvoiman taso	100 dB (A)
Art der Schneidevorrichtung Type of cutting device Genre du dispositif de coupe Tipo di dispositivo di taglio Tipo de dispositivo de corte Soort snijmiddel Tipo de dispositivo cortante Typ av skäranordning Type klipperedskap Bladtype Leikkurityypit	SICHELMESSER ROTATING BLADE LAME ROTATIVE LAMA ROTANTE CUCHILLA GIRATORIA ROTEREND BLAD LÂMINA ROTATIVA ROTERANDE BLAD ROTERENDE BLAD ROTERENDE BLADE PYÖRIVÄ TERÄ
Schnittbreite / Width of cut / Largeur de coupe / Ampiezza di taglio / Ancho de corte / Snijbreedte / Extensão do corte / Skärbredd / Snittbredde / Skærebredde / Leikkuujäljen leveys	76 cm
Umdrehungszahl der Schneidevorrichtung Speed of rotation of the cutting device Vitesse de rotation du dispositif de coupe Velocità di rotazione del dispositivo di taglio Velocidad de rotación del dispositivo de corte Rotatiesnelheid van het snijmiddel Velocidade de rotação do dispositivo cortado Skäranordningens rotationshastighet Rotasjonsfart klipperedskap Rotationshastighed Leikkurin pyörimisnopeus	1685 u/min. rpm t/mn g/min rpm t/min. rpm varv per minut rpm rpm kierrosta/min.
Geschehen zu / Done at / Fait á / Prodotto a / Hecho en / Opgemaakt te / Fabricado em / Intygad / Fullført / fremstillet i / Tehty	Brentwood, Tennessee U.S.A. 37027
am / on / le / ll / el / op / em / den / den / dato / a.p.	13.11.00



(Unterschrift / Signature / Signature / Firma / Handtekening / Firma / Underskrift / Underskrift / Underskrift / Allekirjoitus)

DIRECTOR - INTERNATIONAL SALES

(Amtsbezeichnung / Position / Fonction / Funzione / Puesto / Functie / Título / Yrke / Stilling / Stilling / Asema)

-
- (D) EG–Konformitätserklärung**
entsprechend der Richtlinie 98/37/EG
entsprechend der EG–Richtlinien 89/336
- (GB) EC Certificate of Conformity**
conforming to Directive 98/37/EC
conforming to EEC Directives 89/336
- (F) Déclaration de conformité pour la CEE**
conforme à la directive 98/37/CE
conforme aux directives CEE 89/336
- (I) Certificato di conformita' comunitario**
conforme alla Direttiva 98/37/CE
conforme alle Direttive CEE 89/336
- (E) Declaración de Conformidad**
según la directiva 98/37/CE
según las directivas de la CEE 89/336
- (NL) EG–Conformiteitsverklaring**
overeenkomstig de Richtlijn 98/37/EG
overeenkomstig de EG–Richtlijn 89/336
- (P) Declaração de conformidade**
conforme com a Diretiva 98/37/EC
conforme com as Diretivas da C.E.E. 89/336
- (S) EU–konformitetsintyg**
överensstämmande med föreskrift 98/37/EC
överensstämmande med EU–föreskrifter 89/336
- (N) EU–konformitetserklæring**
overholder direktiv 98/37/EC
overholder EU–direktiver 89/336
- (DK) EU–overensstemmelseserklæring**
overholder direktiv 98/37/EC
overholder EU–direktiver 89/336
- (SF) EY: n Vaatimustenmukaisuusilmoitus**
noudattaa direktiiviä 98/37/EY
noudattaa EY–direktiivin 89/336
-

Wir
(Name des Anbieters)

Nosotros
(nombre del fabricante)

Vi
(Tilbyerens navn)

We
(Name of supplier)

Wij
(naam van de leverancier)

Vi
(Udbyderens navn)

Nous
(Nom du vendeur)

Nós
(nome do fornecedor)

Me
(Tuotteen toimittaja)

Noi
(Nome del fornitore)

Vi
(anbudsgivarens namn)

MURRAY, INC.

(vollständige Anschrift der Firma – bei in der Gemeinschaft niedergelassenen Bevollmächtigten ebenfalls Angabe der Firma und Anschrift des Herstellers)
 (full address of company – where this concerns authorized agents within the Common Market, also state the company name and manufacturer)
 (Adresse complète de la firme – en cas de mandataires établis dans la CEE, prière d'indiquer également la raison sociale et l'adresse du fabricant)
 (indirizzo completo della Società operante nell'ambito del mercato comune, indicazione della Società e indirizzo del Costruttore)
 (dirección completa de la empresa, al tratarse del representante legal dentro de la comunidad, indíquese igualmente el nombre del fabricante)
 (volledig adres van de firma – bij een in de gemeenschap toegelaten gemachtigde eveneens de firma en het adres van de fabricant aangeven)
 (direcção completa de empresa – no caso de representantes estabelecidos na comunidade indicar também o nome da empresa e a direcção do fabricante)
 (fullständig företagsadress – vid befullmäktigade samarbetspartner med säte inom EU uppges även tillverkarens företagsnamn och adress)
 (Firmaets fullstendige adresse – såfremt representant finnes etableret i EU skal fabrikantens firmanavn og adresse oplyses)
 (fuldstændig firmaadresse – såfremt repræsentant findes etableret i EF skal fabrikantens firmanavn og adresse ligeledes oplyses)
 (Yhtiön täydellinen osoite – jos tämä koskee valtuutettua agenttia yhteisön alueella, ilmoita myös yhtiön nimi ja valmistaja)

erklären in alleiniger Verantwortung, daß das Produkt
 declare in sole responsibility, that the product
 déclarons sous notre seule responsabilité que le produit
 dichiariamo sotto la nostra piena responsabilità che il prodotto
 declaramos bajo responsabilidad propia que el producto
 verklaren enig in verantwoording, dat het produkt
 declaramos com responsabilidade própria que o produto
 intygar med ensamansvar att nedanstående produkt
 erklærer som eneansvarlig at produktet
 erklærer som eneansvarlig, at produktet
 ilmoitamme yksin vastaavamme, että tuote

309012x11A

(Fabrikat, Typ) (Make, model) (Marque, modèle) (Marca, tipo)
 (Marca, modelo) (Fabricant, type) (Marca, modelo) (Fabrikat, typ)
 (Fabrikat, type) (Mærke, type) (Merkki, malli)

auf das sich diese Erklärung bezieht, den einschlägigen grundlegenden Sicherheits– und Gesundheitsanforderungen der Richtlinie 98/37/EC, (falls zutreffend) sowie den Anforderungen der anderen einschlägigen EG–Richtlinien entspricht
 to which this certificate applies, conforms to the basic health and safety requirements of Directive 98/37/EC, (if applicable) and to the other relevant EEC Directives
 faisant l'objet de la déclaration est conforme aux prescriptions fondamentales en matière de sécurité et de santé stipulées dans la Directive 98/37/CE, (le cas échéant) ainsi qu'aux prescriptions des autres Directives de la CEE établies dans ce domaine
 cui la presente dichiarazione si riferisce, è conforme ai requisiti di Direttiva 98/37/CE in materia di sicurezza e sanità, (nel caso specifico) nonché a quelli di altre direttive CE pertinenti
 al cual se refiere la presente declaración corresponde a las exigencias básicas de la directiva 98/37/CE, referentes a la seguridad y a la sanidad, (en caso dado), así como a las exigencias de las demás normativas de la CEE
 waarop deze verklaring betrekking heeft, overeenkomt met de basiseisen van de richtlijn 98/37/EG m.b.t. veiligheid en gezondheid, (indien van toepassing) alsook met de eisen van de andere EG–richtlijnen terzake geldig
 a que se refere esta declaração corresponde às exigências fundamentais respectivas à segurança e à saúde da Diretiva 98/37/CE (quando aplicável), assim como às exigências das outras diretivas relevantes da C.E.E.
 för vilket detta intyg gäller, uppfyller de grundläggande säkerhets– och hälsoskyddskraven enligt föreskrift 98/37/EC, (om tillämplig) samt uppfyller kraven enligt andra relevanta EU–föreskrifter
 som denne erklæring vedrører, oppfylder de grunnleggende sikkerhets– og sunnhetskrav i direktivet 98/37/EC, (hvis relevant) samt kravene i andre relevante EU–direktiver
 som denne erklæring vedrører, overholder de grundlæggende sikkerheds– og sunnhedskrav i direktiv 98/37/CE samt (hvis relevant), samt kravene i andre relevante EU–direktiver
 johon tämä ilmoitus liittyy, vastaa direktiivissä 98/37/EY mainittuja perusturvallisuus– ja terveystaatumuksia (soveltuvin osin) sekä muita siihen kuuluvia EY direktiivejä

89/336 EEC

(Titel und/oder Nummer sowie Ausgabedatum der anderen EG–Richtlinien)
 (Title and/or number and date of issue of the other EEC Directives)
 (Titre et/ou numéro et date de publication des autres directives de la CEE)
 (Titolo e/o numero, data di promulgazione delle altre direttive CEE)
 (Título y/o número así como fecha de publicación de las demás normativas de la CEE)
 (Titel en/of nummer alsook datum van uitgave van de andere EG–richtlijnen)
 (Título a/ou número assim como data de publicação das outras normas da C.E.E.)
 (Titel och/eller nummer samt publikationsdatum för övriga EU–normer)
 (Titel og/eller nummer og udgave datum på de andre vedkommende EF–retningslinjerne)
 (Titel og/eller nummer samt udgivelsesdato på de andre EF–direktiver)
 (Otsikko ja/tai numero ja päiväys muista EY direktiiveistä)
 (falls zutreffend) (if applicable) (le cas échéant) (nel caso specifico) (en caso dado) (indien van toepassing) (em caso afirmativo)
 (om tillämpligt) (dersom dette tiltreffer) (hvis relevant) (soveltuvin oin)

Zur sachgerechten Umsetzung der in den EG-Richtlinien genannten Sicherheits- und Gesundheitsanforderungen wurde(n) folgende Norm(en) und/oder technische Spezifikation(en) herangezogen: BS EN 386:1997, BS EN 1033:1996 und/oder BS EN 1032:1997

To effect correct application of the safety and health requirements stated in the EEC Directions, the following standards and/or technical specifications were consulted: BS EN 386:1997, BS EN 1033:1996 and/or BS EN 1032:1997

Pour mettre en pratique dans les règles de l'art les prescriptions en matière de sécurité et de santé stipulées dans les Directives de la CEE, il a été tenu compte de la/des norme(s) et/ou de la/des spécification(s) technique(s) suivante(s): BS EN 386:1997, BS EN 1033:1996 et/ou BS EN 1032:1997

Per un'appropriato riscontro nell'ambito della normativa CEE delle norme di sicurezza e sanitarie sopra citate, è (sono) stata(e) consultata(e) la(e) seguente(i) norma(e) e/o specifica(che) tecnica(che): BS EN 386:1997, BS EN 1033:1996 e/o BS EN 1032:1997

Con el fin de realizar de forma adecuada las exigencias referentes a la seguridad y a la sanidad mencionadas en las normativas de la CEE (fué(ron) consultada(s) la(s) siguiente(s) normativa(s) y especificación(es) técnica(s): BS EN 386:1997, BS EN 1033:1996 y/o BS EN 1032:1997

Om de veiligheids- en gezondheidseisen, die in de EG-richtlijnen vermeld zijn, in juiste vorm om te zetten, is/zijn van volgende norm(en) en/of technische specificatie(s) gebruik gemaakt: BS EN 386:1997, BS EN 1033:1996 en/of BS EN 1032:1997

Com o fim de realizar de forma apropriada as exigencias referentes à segurança e à saúde mencionadas nas normas da C.E.E. consultou-se a(s) seguinte(s) norma(s) e/ou especificação(ões) técnica(s): BS EN 386:1997, BS EN 1033:1996 e/ou BS EN 1032:1997

Följande norm(er) och/eller teknisk(a) specifikation(er) har legat till grund för ett fackmässigt införande av de i EU-normerna angivna säkerhets- och hälsoskyddsföreskrifterna: BS EN 386:1997, BS EN 1033:1996 och/eller BS EN 1032:1997

Følgende normer og/eller tekniske spesifikasjoner er lagt til grunn for gjennomførelse av EU-retningslinjenes nevnte sikkerhets- og sunnhetskrav: BS EN 386:1997, BS EN 1033:1996 og/eller BS EN 1032:1997

Til gennemførelse af de i EF-direktivet nævnte sikkerheds- og sundhedskrav er følgende standard(er) og/eller tekniske specifikation(er) anvendt: BS EN 386:1997, BS EN 1033:1996 og/eller BS EN 1032:1997

EY direktiivissä mainittujen turvallisuus- ja terveysvaatimusten oikean käytön varmistamiseksi on seuraavia standardeja ja/tai teknisiä erittelyjä käytetty: BS EN 386:1997, BS EN 1033:1996 ja/tai BS EN 1032:1997

98/37/EC

89/336 EEC

(Titel und/oder Nummer sowie Ausgabedatum der Norm(en) und/oder der technischen Spezifikation(en))

(Title and/or number and date of issue of standards and/or specifications)

(Titre et/ou numéro et date de publication de la/des norme(s) et/ou de la/des spécification(s) technique(s))

(Titolo e/o numero, data di promulgazione della(e) norma(e) e/o specifica(che) tecnica(che))

(Título y/o número así como fecha de publicación de la(s) normativa(s) y/o de la(s) especificación(es) técnica(s))

(Titel en/of nummer alsook datum van uitgave van de norm(en) en/of van de technische specificatie(s))

(Título a/ou número assim como data de publicação da(s) norma(s) e/ou especificação(ões) técnica(s))

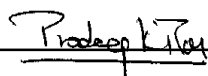
(Titel och/eller nummer samt publikationsdatum för norm(er) och/eller teknisk(a) specifikation(er))

(Titel og/eller nummer, samt utgivelsesdato på standarden(e) og/eller den (de) tekniske spesifikasjone (er))

(Titel og/eller nummer samt udgivelsesdato på standarden(erne) og/eller den(de) tekniske specifikation(er))

(Otsikko ja/tai numero ja päiväys käytetyistä standardeista ja/tai teknisistä erittelyistä)

Brentwood, TN USA 13.11.00



Director, International Sales

(Ort und Datum der Ausstellung)

(Place and date of issue)

(Lieu et date)

(Luogo e data del rilascio)

(Lugar y fecha de expedición)

(Plaats en datum van de verklaring)

(Lugar e data de emissão)

(Utfärdat ort/datum)

(Sted og datum)

(Sted og dato)

(Ilmoitus annettu paikka ja päiväys)

F-010604J

(Name, Funktion und Unterschrift des Befugten)

(Name and job function of authorized person)

(Nom, fonction et signature de la personne autorisée)

(Nome, qualifica e firma dell'incaricato)

(Nombre, función y firma del encargado)

(Naam, functie en handtekening van bevoegd persoon)

(Nome, cargo e assinatura do responsável)

(Namn, befattning och underskrift av behörig medarbetare)

(Bemyndigtes navn, funksjon og underskrift)

(Bemyndigedes navn, funktion og underskrift)

(Valtuutetun henkilön nimi ja tehtävä)