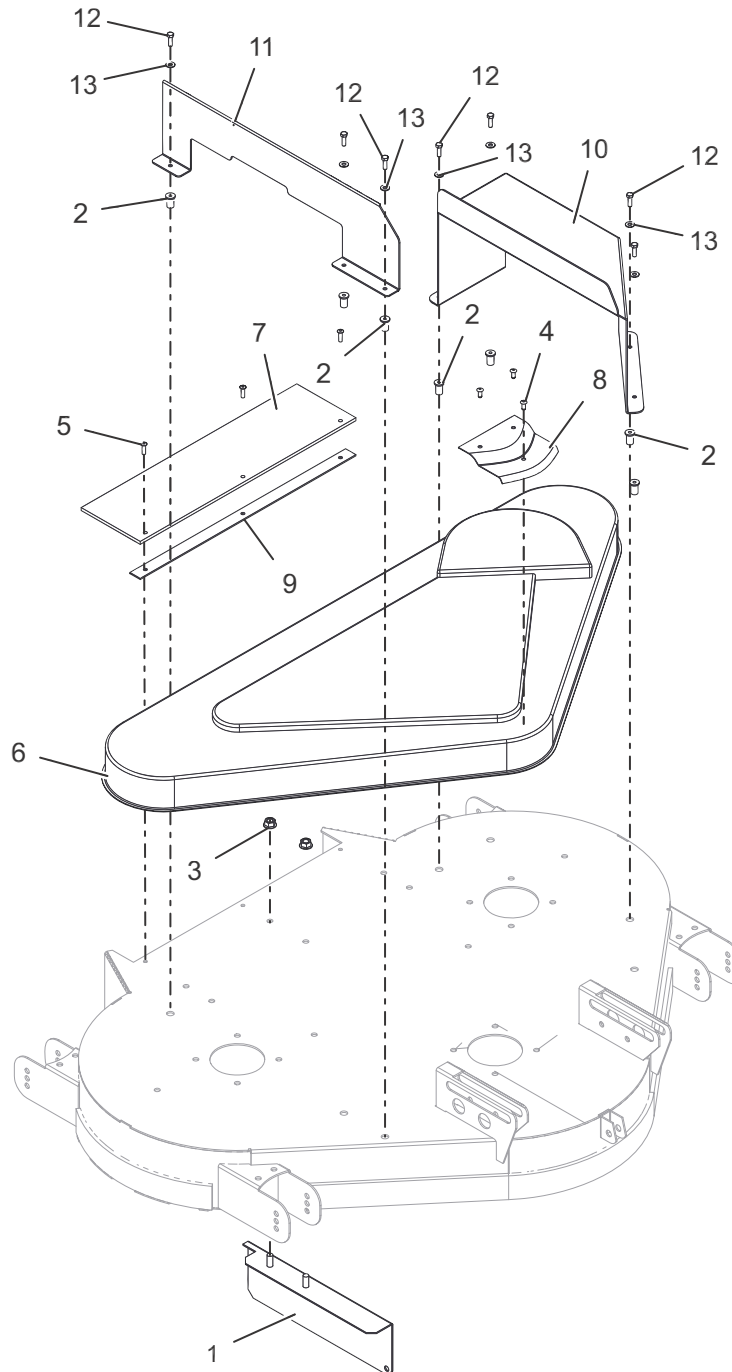


DECK – COVERS AND GUARDS

Model E36

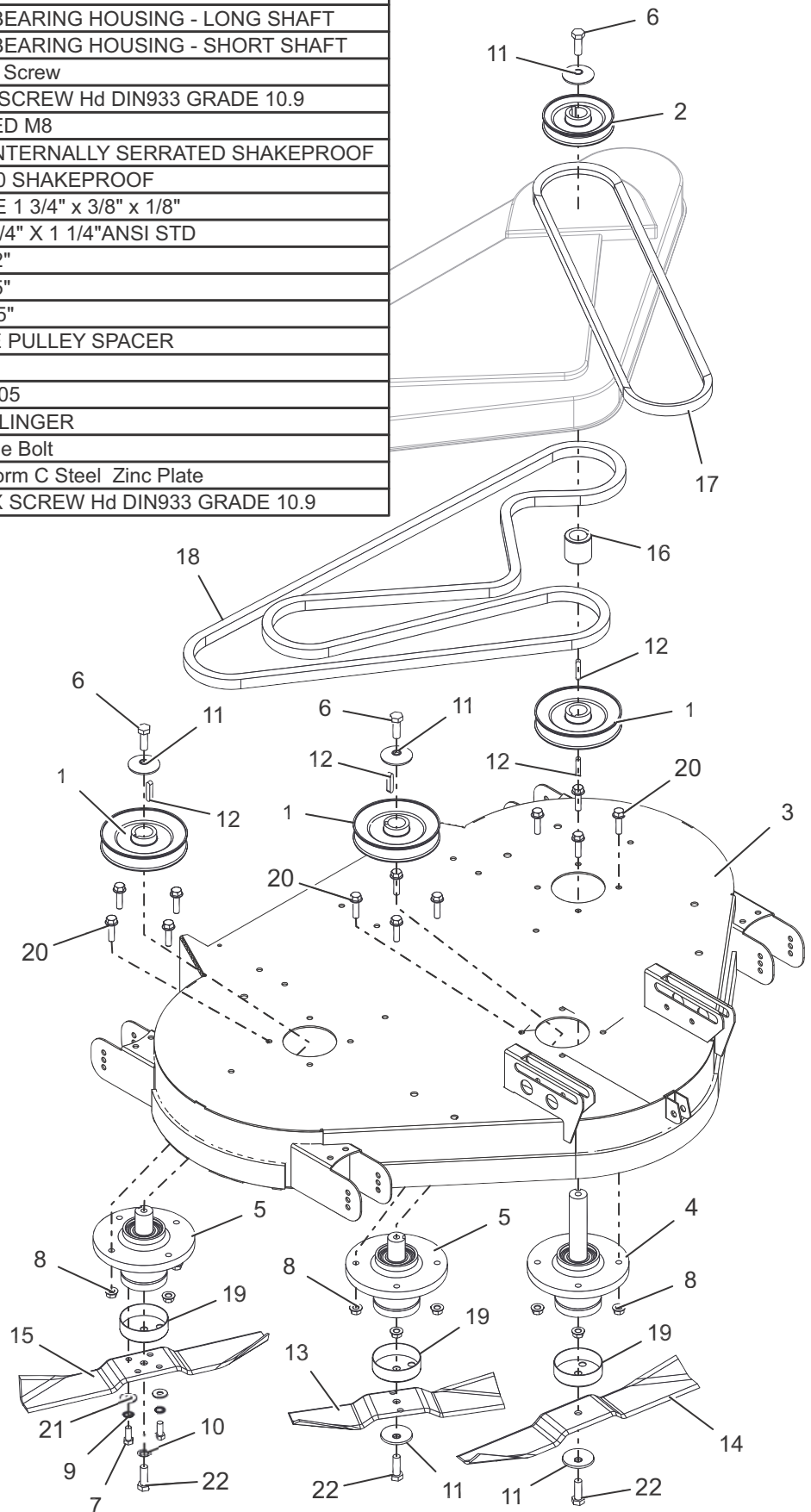


BOM ID	Number	Qty	Description
1	327402200	1	ASM, GUIDE PLATE 36
2	048001400	7	M5 JACK NUT
3	049383700	2	NUT, FLANGED M8
4	12824400	3	RVT, POP 4.8X10mm
5	12860100	3	RIVET 4.8 X 16MM ALLOY POP
6	148002200	1	DECK, 36 XRD COVER
7	14868900	1	FLAP, DECK RUBBER
8	301205000	1	SHIELD, DECK FRONT
9	541113000	1	STRIP, DECK FLAP
10	549100700	1	GUARD, LH 36 XRD - E36
11	549100800	1	GUARD, RH 36 XRD - E36
12	02912200	7	M5 x16 Hex Screw HT Grade 8.8 Zinc Trivalent Clear DIN933
13	088002800	7	M5 Washer Form C BS4320 Zinc & Clear

DECK – DECK, SPINDLES, AND BELTS

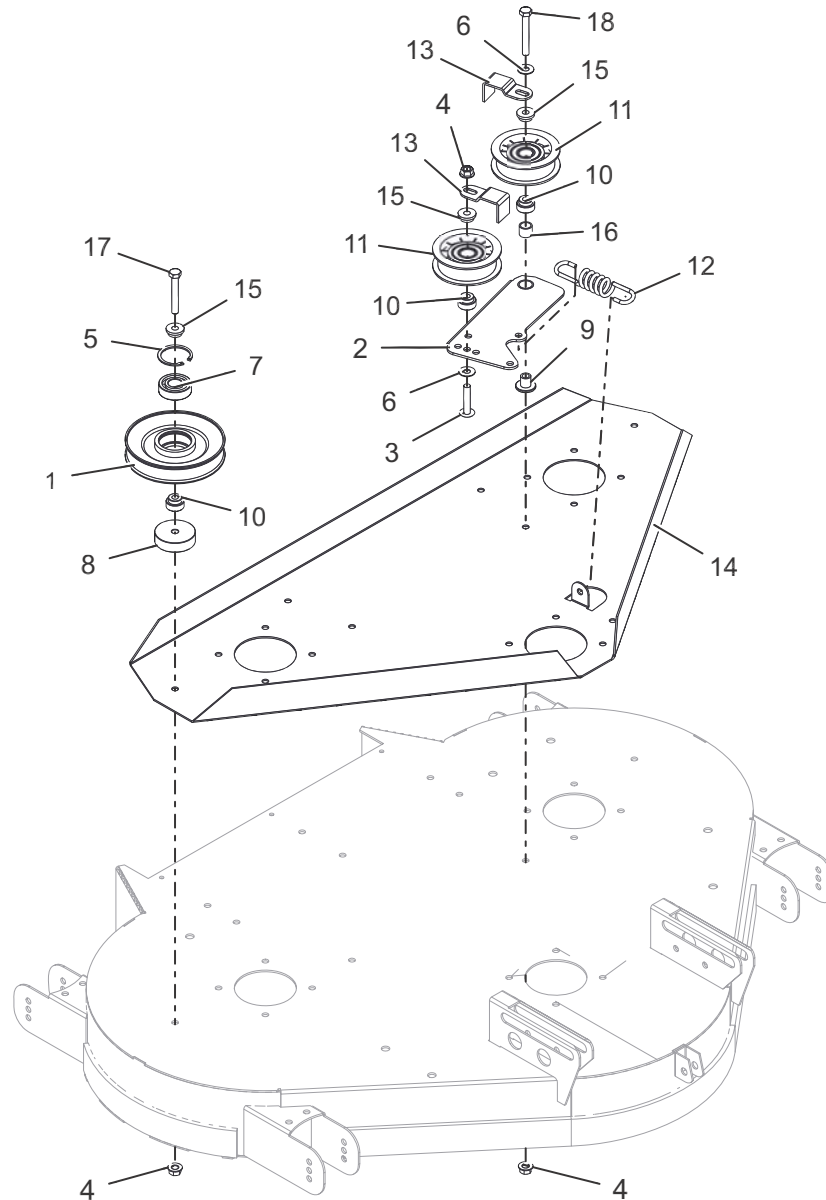
Model E36

BOM ID	Number	Qty	Description
1	20869502	3	ASM, PULLEY , 5" SPLIT, DECK
2	20869900	1	ASM, PULLEY 100 MM
3	327402400	1	DECK, BODY 36 XRD - E SERIES
4	40503507	1	ASM, DECK BEARING HOUSING - LONG SHAFT
5	40503607	2	ASM, DECK BEARING HOUSING - SHORT SHAFT
6	02886000	3	M10 x 30 Hex Screw
7	028893500	2	M8 x 20 HEX SCREW Hd DIN933 GRADE 10.9
8	049383700	12	NUT, FLANGED M8
9	088003800	2	WSHR, M8 INTERNALLY SERRATED SHAKEPROOF
10	088004000	1	WASHER M10 SHAKEPROOF
11	08819901	5	WSHR, DOME 1 3/4" x 3/8" x 1/8"
12	09853401	4	KEY, 1/4" X 1/4" X 1 1/4"ANSI STD
13	16869001	1	BLADE, LH 12"
14	16869102	1	BLADE, LH 15"
15	16869202	1	BLADE, RH 15"
16	183530500	1	DECK, DRIVE PULLEY SPACER
17	228000100	1	BELT, B51
18	22869800	1	V-BELT, AA 105
19	30831500	3	CAP, DECK SLINGER
20	019483700	12	M8 x 30 Flange Bolt
21	088003700	2	M8 Washer Form C Steel Zinc Plate
22	028892300	3	M10 x 30 HEX SCREW Hd DIN933 GRADE 10.9



DECK – PULLEYS AND IDLERS

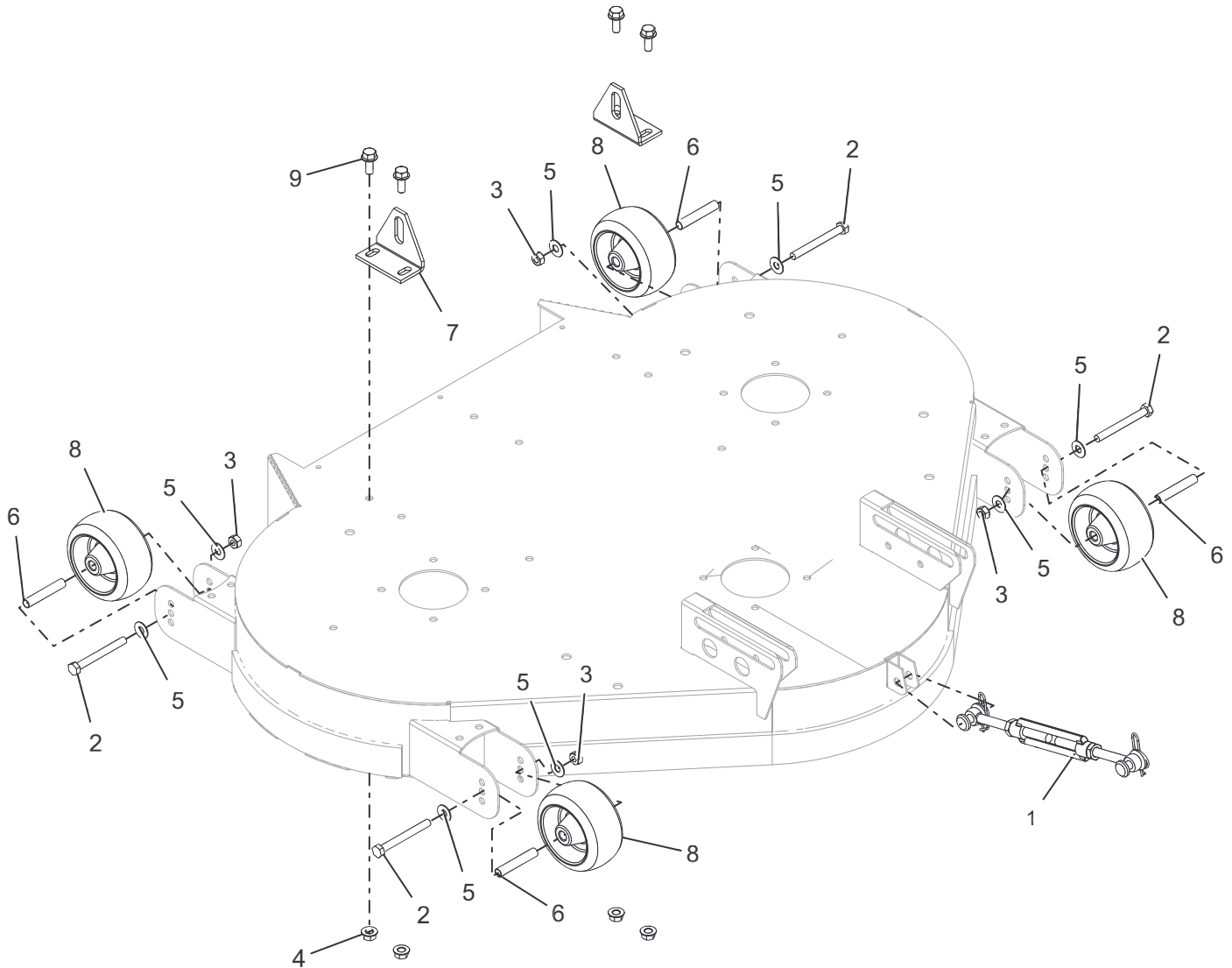
Model E36



BOM ID	Number	Qty	Description
1	209044601	1	PULLEY, IDLER 5"
2	32731000	1	ASM, DECK TENSION PLATE
3	018001700	1	M8 x 40 Zinc Plated Roofing Bolt
4	049383700	3	NUT, FLANGED M8
5	07847600	1	40 mm Circlip
6	088003700	2	M8 Plated Form C Washer
7	108116001	1	BRG, 6203-2RS ROLLER SHAFT
8	183004200	1	SPCR, IDLER PULLEY
9	183853800	1	SPCR, PIVOT UNIVERSAL JOCKEY
10	18831602	3	IDLER, PULLEY SPACER
11	20811500	2	PULLEY, PLASTIC IDLER
12	25906200	1	Deck Spring
13	301123800	2	BRKT, BELT RETAINING
14	302012300	1	DECK, TOP 36 STIFFENER
15	31351101	3	BOSS, PGC JOCKEY CAP
16	52936700	1	BRG, OILITE BUSH 2
17	028662600	1	M8 x 55 Hex Bolt HT Grade 8.8 Zinc Trivalent Clear
18	018000600	1	M8 x 60 Hex Bolt HT Grade 8.8 Zinc Plate

DECK – HANGERS AND WHEELS

Model E36



BOM ID	Number	Qty	Description
1	409436800	1	ASM, DECK TENSION ADJUSTMENT - LONG
2	018005600	4	M8 x 75 Plated Hex Bolt
3	04920100	4	NUT, NYLOC M8
4	049383700	4	NUT, FLANGED M8
5	088003700	8	M8 Plated Form C Washer
6	179550400	4	DECK, Anti Scalp Wheel Hub 10 x 57 mm
7	541039100	2	DECK, REAR HANGING BRACKET
8	7320	4	DECK, WHEEL SMALL
9	019483600	4	M8 x 20 Flange Bolt



Ariens Company Limited
Countax House, Great Haseley,
Oxford, OX44 7PF

Telephone: +44 (0)1844 278 800

www.countax.co.uk

 An *Ariens* Company Brand