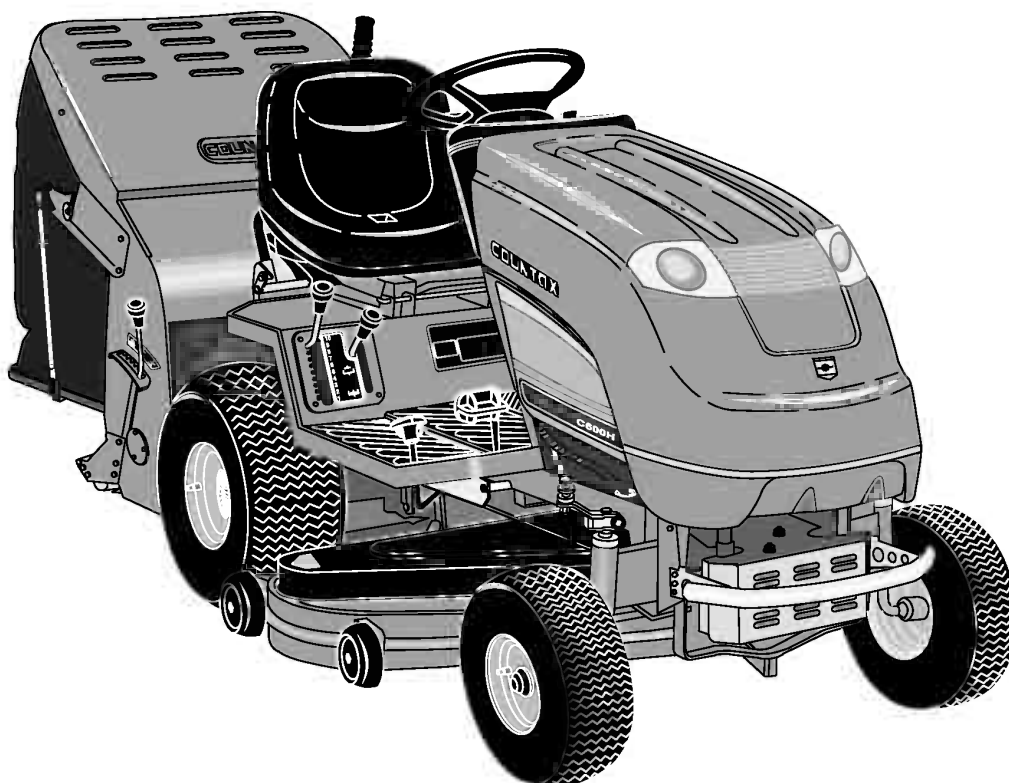


# COUNTAX

Britain's Best Selling Range of Garden Tractors

**C-SERIES TRACTOR**  
**Mk3 2003-2007**  
**SERVICE DRAWINGS**  
**AND**  
**PARTS LIST**



## **Countax Limited**

Countax House  
Haseley Trading Estate  
Great Haseley  
Oxford OX44 7PF

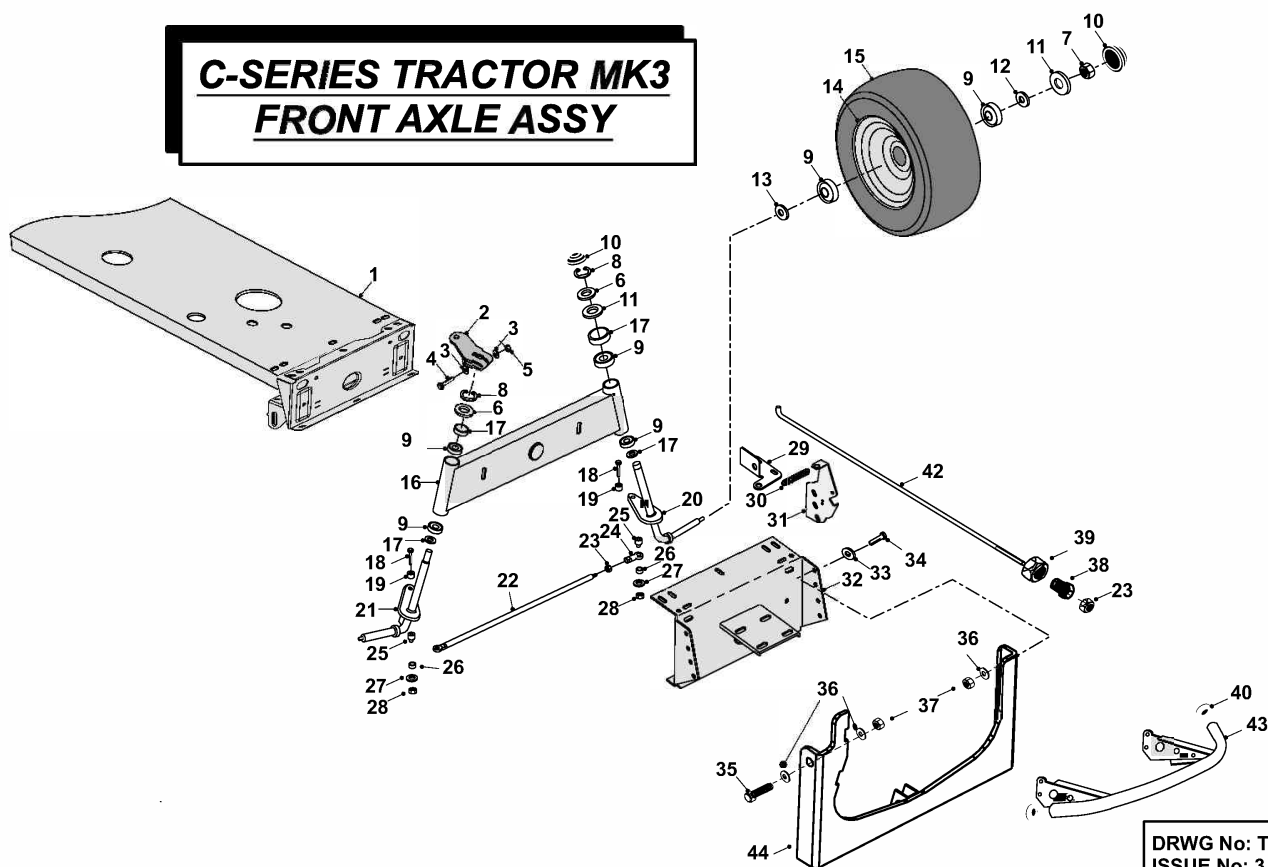
Telephone: +44 (0) 1844 278800  
Facsimile: +44 (0) 1844 278792  
EMail: [email@countax.com](mailto:email@countax.com)  
Web Site: <http://www.countax.com>

***Manufacturers of Britain's  
No.1 Range of Garden Tractors  
and Ride-on Mowers***

**COUNTAX**  
**C-SERIES TRACTOR MK3**  
**SERVICE DRAWINGS**  
**AND**  
**PARTS LIST**  
**INDEX**

1. FRONT AXLE ASSEMBLY
2. BONNET ASSEMBLY
3. CONSUL ASSEMBLY
4. REAR BODY ASSEMBLY
- 4a. REAR BODY ASSEMBLY MANUAL
5. PTO & TRANSMISSION ASSEMBLY
6. HYDROSTATIC TRANSAXLE ASSEMBLY
7. MAIN WIRING LOOM
8. H.E. WIRING LOOM
9. DIAL HEIGHT WIRING LOOM
10. DECALS

# **C-SERIES TRACTOR MK3** **FRONT AXLE ASSY**



DRWG No: T2010303  
 ISSUE No: 3

SECTION 1

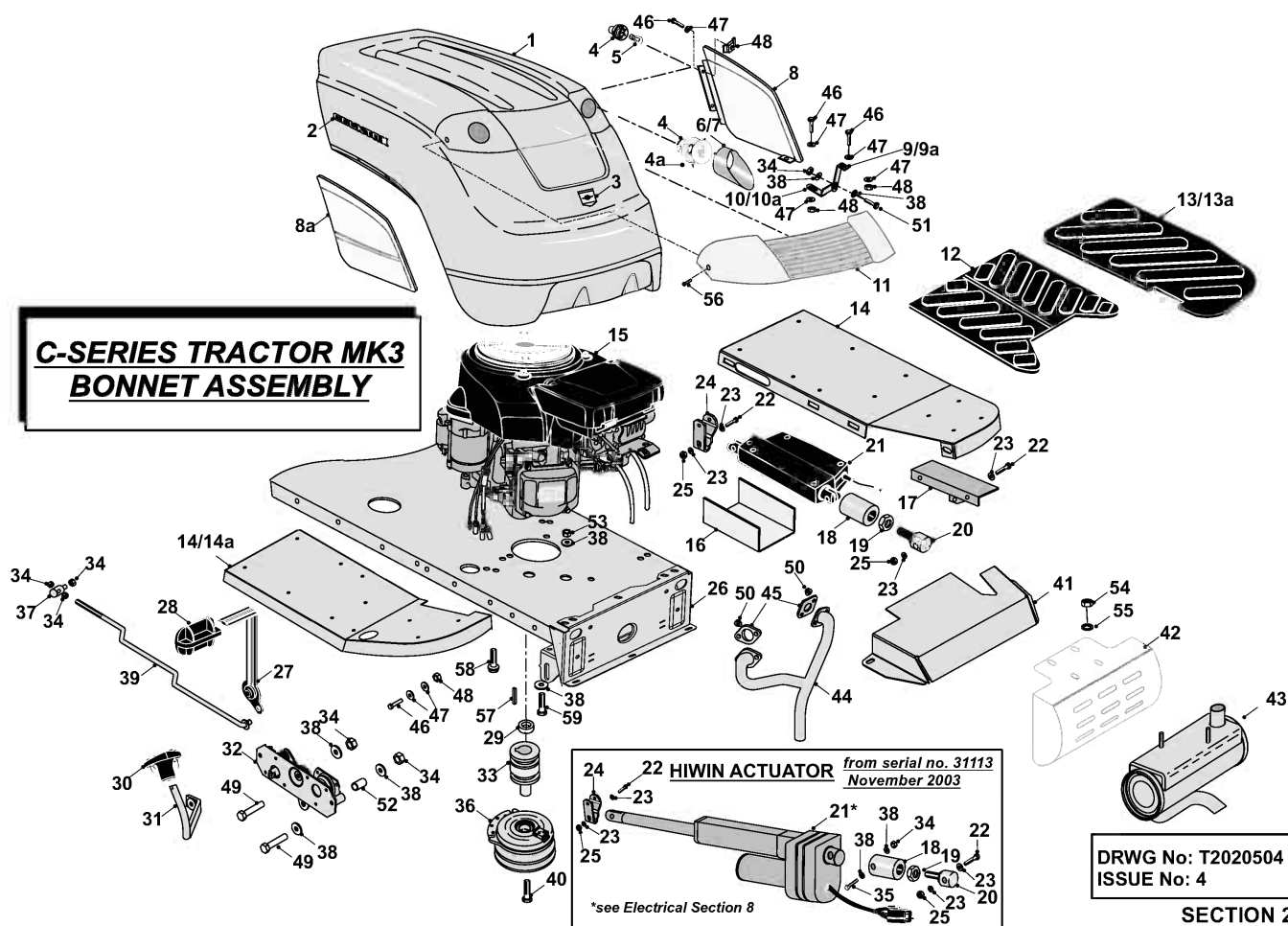
**C-SERIES MK3 TRACTOR  
FRONT AXLE ASSEMBLY  
PARTS LIST**

|     | PART DESCRIPTION   | PART NUMBER |
|-----|--|-------------|
| 1.  | Chassis 04   | 327023302   |
| 2.  | Steering Arm   | 32702501    |
| 3.  | Washer M10   | 088002400   |
| 4.  | Coach Bolt M10 x 60mm zinc clear                         | 018005000   |
| 5.  | Nyloc Nut M10  | 04886100    |
| 6.  | Washer 19mm x 2mm  | 088000500   |
| 7.  | Nyloc Nut M12  | 049381100   |
| 8.  | 19mm External Circlip                                    | 07921200    |
| 9.  | Front Wheel Bearing                                      | 10802200    |
| 10. | Hub Cap (Moulded)  | 14811800    |
| 11. | Hub Cap Washer 46mm x 13mm I.D.                          | 30128100    |
| 12. | M12 Washer   | 088001200   |
| 13. | Washer 19mm x 2mm  | 088000500   |
| 14. | Front Wheel Rim & Hub                                    | 32701100    |
| 15. | Front Tyre 15X6  | 19802800    |
|     | Wheel Valve (Not Illustrated - Location Outer Wheel Hub) | 14889200    |
| 16. | C-Series Front Axle Beam                                 | 327014700   |
| 17. | Washer 32mm x 19.5 I.D.                                  | 30127900    |
| 18. | M10 x 90 Hex Head Bolt                                   | 018002500   |
| 19. | Rose Joint Boss  | 31302400    |
| 20. | Stub Axle L/H  | 327015100   |
| 21. | Stub Axle R/H  | 327015200   |
| 22. | Track Rod M10  | 31318300    |
| 23. | Locknut M10  | 04872100    |
| 24. | Rod End 10mm   | 10872600    |
| 25. | Rose Joint Shoulder Boss Long                            | 31337100    |
| 26. | Spacer 7mm x 10mm I.D.                                   | 31302900    |
| 27. | Washer 10.81 i.d. x 20.70 d x 2mm Thick                  | 088002400   |
| 28. | M10 Nyloc Nut  | 04886100    |
| 29. | Bonnet Hinge Bracket L/H                                 | 301136300   |
|     | Bonnet Hinge Bracket R/H                                 | 301136400   |
| 30. | Bonnet Spring  | 25805200    |
| 31. | Bonnet Stop L/H  | 301136500   |
|     | Bonnet Stop R/H  | 301136600   |
| 32. | Chassis Front  | 27115500    |
| 33. | M8 Washer  | 08819500    |
| 34. | Bolt M8 x 25 mm Roofing Bolt                             | 01902300    |
| 35. | 5/16" x 1. ¼" Bolt                                       | 01820600    |
| 36. | M8 x 21 x 1.6 Washer                                     | 088003700   |
| 37. | 5/16" Nut  | 04827500    |

**C-SERIES MK3 TRACTOR  
FRONT AXLE ASSEMBLY  
PARTS LIST**

|     | PART DESCRIPTION                      | PART NUMBER |
|-----|---------------------------------------|-------------|
| 38. | Deck Tension Adjuster                 | 189507400   |
| 39. | M16 Lock Nut                          | 049382500   |
| 40. | Bull Bar Plastic End Caps             | 148014400   |
| 41. | Washer 10.81 i.d. x 20.70 d x 2mm Thk | 088002400   |
| 42. | Deck Tension Rod                      | 318963200   |
| 43. | Stainless Steel Bull Bar              | 327028000   |
| 44. | Deck Tension Cradle                   | 327365700   |
|     |                                       |             |
|     |                                       |             |
|     |                                       |             |
|     |                                       |             |
|     |                                       |             |
|     |                                       |             |
|     |                                       |             |
|     |                                       |             |

# **C-SERIES TRACTOR MK3 BONNET ASSEMBLY**



**C-SERIES MK3 TRACTOR**  
**BONNET ASSEMBLY**  
**PARTS LIST**

|     | PART DESCRIPTION   | PART NUMBER                   |
|-----|--|-------------------------------|
| 1.  | Bonnet C300, C400 & C600   | 405007300                     |
|     | Bonnet C800  | 405007400                     |
| 2.  | Pegged Badge Countax   | 149499000                     |
| 3.  | Countax Bonnet Badge   | 359513400                     |
| 4.  | Headlight Unit – Hella   | 448008400                     |
| 4a  | Fir Tree Fastener  | 148012300                     |
| 5.  | Headlight Bulb 21w - Hella   | 448008500                     |
| 6.  | Headlight Can L/H  | 148013500                     |
| 7.  | Headlight Can R/H  | 148013600                     |
| 8   | Engine Side Panel L/H C-Series 2002  | 148014100                     |
| 8a. | Engine Side Panel R/H C-Series 2002  | 148014200                     |
| 9   | Front Side Panel Top Fixing Bracket L/H  | 301137600                     |
| 9a. | Front Side Panel Top Fixing Bracket R/H  | 301137700                     |
| 10  | Side Panel Base Bracket L/H  | 301137200                     |
| 10a | Side Panel Base Bracket R/H  | 301137300                     |
| 11. | Bonnet Headlight Lens 2002   | 148013400                     |
| 12. | Centre Runner Mat  | 148006500                     |
| 13  | Running Board Mat L/H (Uplifted Running Board)   | 148010900                     |
| 13a | Running Board Mat R/H (Uplifted Running Board)   | 148010800                     |
| 14  | Running Board L/H  | 327177800                     |
| 14a | Running Board R/H  | 327177700                     |
| 15. | Honda Engine GXV 620 (18 & 20HP)<br>Honda Engine GCV 520/530 (13, 14 & 16HP)                   | Not Available from<br>Countax |
| 16. | H.E.Actuator Cover 2002  | 307188100                     |
| 17. | H.E Mounting Bracket   | 327363500                     |
| 18. | LA12 Linak Actuator Adjuster Boss<br>Universal Actuator Attachment Body – Aug 03               | 189498600<br>183028100        |
| 19. | Nut M12  | 049381200                     |
| 20. | Deck Lift Actuator Adjustment Screw  | 187184900                     |
| 21. | LA12 Actuator Serial no from 20811 - 31015<br>Actuator 1200N Hiwin Serial No from 31015 - date | 448008601<br>448015700        |
| 22. | M10 X 55mm Hx Head Bolt  | 018002400                     |
| 23. | Washer 10.81 i.d. x 20.70d x 2mmThk  | 088002400                     |
| 24. | Deck Lift Actuator Arm<br>Universal Deck Lift Arm – Hiwin Actuator                             | 301055001<br>307192400        |
| 25. | M10 Nut Nyloc  | 04886100                      |
| 26. | Chassis 06   | 327023302                     |
| 27. | Forward Pedal Rod  | 327361200                     |
| 28. | Forward Pedal Rubber   | 148013700                     |
| 29. | Engine Pulley Spacer   | 31854000                      |
| 30. | Reverse Pedal Rubber   | 148013800                     |
| 31. | Cassette Reverse Pedal   | 327361300                     |
| 32. | Transmission Cassette 2002 C-Series  | 409429500                     |
| 33. | Magstop Engine Pulley  | 31330502                      |

**NOV 2007**

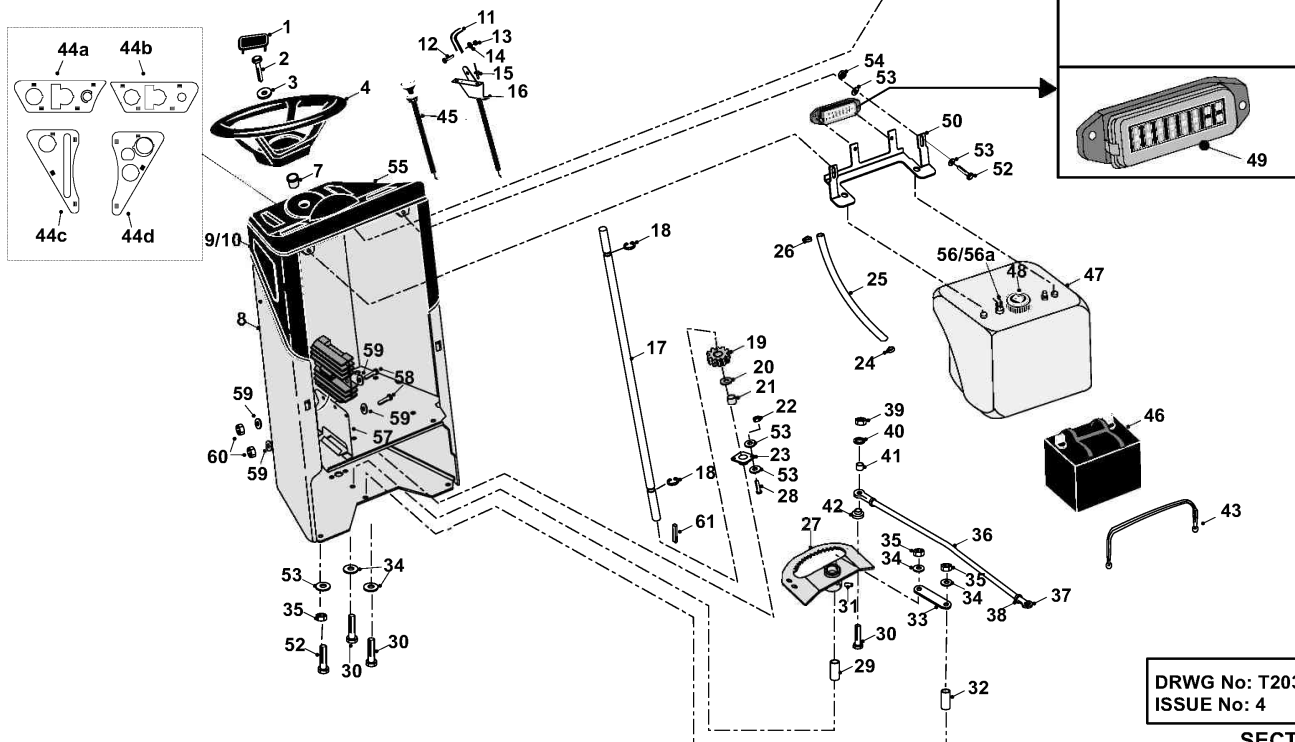
**SECTION 2**

**C- SERIES MK3 TRACTOR**  
**BONNET ASSEMBLY**  
**PARTS LIST**

|     | PART DESCRIPTION   | PART NUMBER            |
|-----|--|------------------------|
| 34. | Full Nut Hex M8 Z/P  | 04822300               |
| 35. | M8 x 35mm Bolt   | 01935700               |
| 36. | Warner Electric Mag Stop Clutch                                  | 44936100               |
| 37. | Forward Reverse Trunnion   | 183017300              |
| 38. | M8 Washer  | 08819500               |
| 39. | Cassette Forward Reverse Rod                                     | 327362500              |
| 40. | Bolt 7/16" UNF x 4.5" UNF  | 01831000               |
| 41. | Heat Shield Zintec 13, 14 & 16HP<br>Heat Shield Zintec 18 & 20HP | 301137900<br>301138000 |
| 42. | Exhaust Box Cover  | 307199700              |
| 43. | 2003 Exhaust R/H Outlet  | 328956301              |
| 44. | Exhaust Pipe 13, 14 & 16HP<br>Exhaust Pipe 18 & 20HP             | 327026300<br>327026400 |
| 45. | Exhaust Gasket   | Supplied by Honda      |
| 46. | Set Screw M6 x 20mm pozi   | 019479400              |
| 47. | Washer 9/16"   | 08874300               |
| 48. | M6 Captive Nut   | 049381900              |
| 49. | Bolt M8 x 45mm (Vac)   | 02941000               |
| 50. | Exhaust Flanged Fixing Nuts                                      | Supplied by Honda      |
| 51. | Bolt M8  | 01852000               |
| 52. | Transaxle Deflector Spacer                                       | 31322200               |
| 53. | M8 Nyloc Nut   | 04920100               |
| 54. | M8 Philadas Self Locking Nut Zinc Plated                         | 048001700              |
| 55. | Washer M8 x 25 x 3 unplated                                      | 089418600              |
| 56. | M4 x 16mm Socket Head Countersunk Screw                          | 018005100              |
| 57. | Engine Key 1/4" Square x 1.1/4"                                  | 09853401               |
| 58. | Engine Bolt 3/8" x 1.1/4" BZP                                    | 01848700               |
| 59. | Bolt M8 x 20mm   | 02825900               |



# **C-SERIES TRACTOR MK3 CONSOL ASSY**



DRWG No: T2030504  
ISSUE No: 4

SECTION 3

**C-SERIES MK3 TRACTOR**  
**CONSOL ASSEMBLY**  
**PARTS LIST**

|     | PART DESCRIPTION   | PART NUMBER            |
|-----|--|------------------------|
| 1.  | Steering Wheel Cap   | 14938700               |
| 2.  | Bolt M8 x 25mm   | 02826000               |
| 3.  | M8 Washer  | 08819500               |
| 4.  | Steering Wheel   | 14928200               |
| 5.  | Washer No.10   | 088004400              |
| 6.  | Screw No.10 x ½" Flat Ended Pozidrive Self Tapper  | 028663300              |
| 7.  | Column Upper Bush  | 14801800               |
| 8.  | C-Series Consol  | 327028401              |
| 9.  | Rubber Knee Pad R/H  | 14859200               |
| 10. | Rubber Knee Pad L/H  | 14859300               |
| 11. | Control Knob   | 14810400               |
| 12. | Set Screw M4 x 12mm pozi pan zinc plated   | 02826300               |
| 13. | Nut M4 Nyloc T   | 04826400               |
| 14. | M4 Form A Washer BZP   | 08826200               |
| 15. | Rivet 3.2mm x 10mm   | 12863100               |
| 16. | Throttle Control 13 & 14 HP Honda Single Lever<br>Throttle Control 16, 18HP Honda Double Lever | 528005000<br>528005401 |
| 17. | Steering Column – C Series   | 31328400               |
| 18. | Circlip 5/8"   | 07823800               |
| 19. | Steering Gear  | 213112100              |
| 20. | Washer 5/8" T3 LP  | 08822700               |
| 21. | Steering Rod Spacer  | 18401500               |
| 22. | M8 Nyloc Nut   | 04850600               |
| 23. | Column Lower Bearing   | 10801700               |
| 24. | Spring Type Hose Clip  | 11867100               |
| 25. | Fuel Feed Pipe 40cm  | 14803200               |
| 26. | Jubilee Clip (Fuel Tank Hose)  | 11856900               |
| 27. | Steering Quadrant 17t  | 327015800              |
| 28. | Bolt M8 x 20mm   | 02825900               |
| 29. | Steering Quadrant Pivot  | 31337400               |
| 30. | M10 x 65mm Hex Head Bolt BZP   | 018005300              |
| 31. | Grease Nipple  | 11808600               |
| 32. | Steering Support Boss  | 31337500               |
| 33. | Steering Link Plate  | 27102400               |
| 34. | Washer 10.81 i.d. x 20.70 d x 2mm Thk  | 088002400              |
| 35. | M10 Nyloc Nut  | 04886100               |
| 36. | Tractor Steering Link Rod  | 313007800              |
| 37. | Rod End 10mm   | 10872600               |
| 38. | M10 Locknut  | 04872100               |
| 39. | M10 Nyloc Nut  | 04886100               |
| 40. | Washer 10.81 i.d. x 20.70 d x 2mm Thk  | 088002400              |

NOV 2007

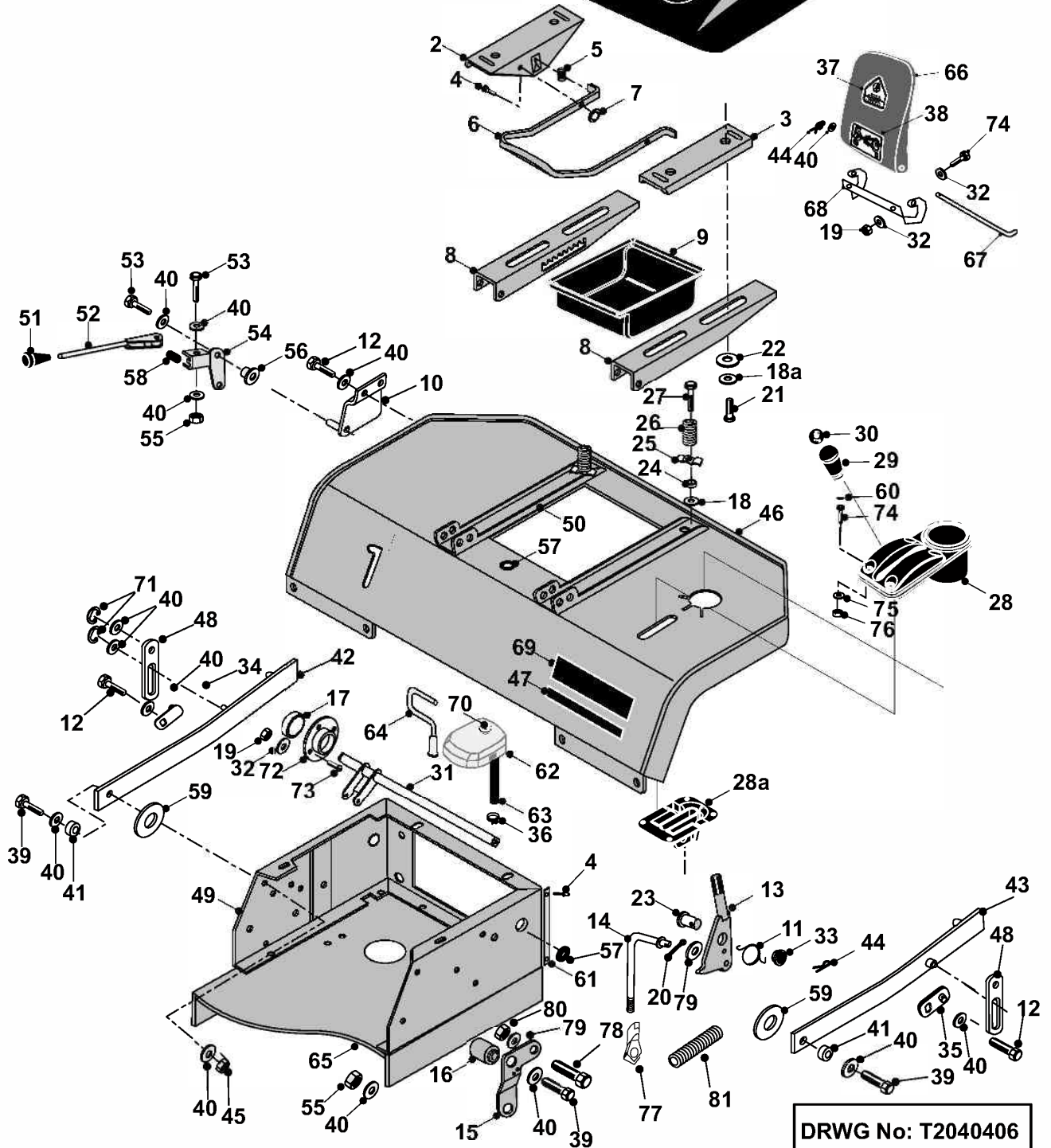
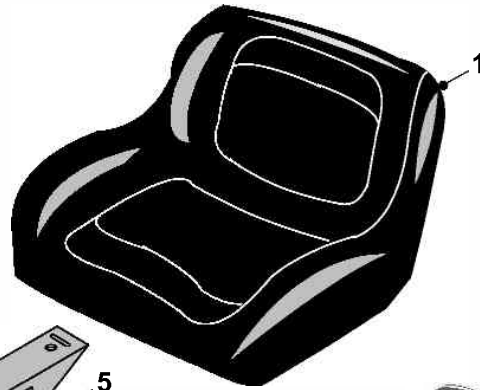
SECTION 3

**C-SERIES MK3 TRACTOR**

### **CONSUL ASSEMBLY**

|      | PART DESCRIPTION                                | PART NUMBER  |
|------|---|--------------|
| 41.  | Spacer 7mm x 10mm i.d.                          | 31302900     |
| 42.  | Rose Joint Shoulder Boss - Short                | 31339600     |
| 43.  | Battery Strap                                   | 149495900    |
| 44.a | Consul Top Insert Upper Left                    | 148012900    |
| 44.b | Consul Top Insert Upper Right                   | 148013000    |
| 44.c | Consul Top Insert Lower Left                    | 148013100    |
| 44.d | Consul Top Insert Lower Right                   | 148013200    |
|      | From serial No 02104 to date                    |              |
| 45.  | Choke Cable (only used on twin cylinder models) | RCL290058-00 |
| 46.  | Battery 12v 3AH (Gel)                           | 458141200    |
| 47.  | Fuel Tank (with hole for gauge)                 | 148015400    |
| 48.  | Fuel Tank Cap                                   | 52803100     |
| 49.  | 2002 Fuse Box Holder                            | 301139400    |
| 50.  | Fuel Tank & Fuse Holder Bracket                 | 307187400    |
| 51.  | Main PCB November 2001- September 2002          | 448002000    |
|      | Main PCB September 2002- September 2004         | 448009402    |
|      | Main PCB September 2004- Current                | 448017004    |
| 52.  | Bolt M8 x 20mm                                  | 02825900     |
| 53.  | M8 Washer                                       | 08819500     |
| 54.  | M8 Nyloc Nut                                    | 04850600     |
| 55.  | Dashboard Consul Top                            | 148012801    |
| 56.  | Fuel Level Sensor                               | 448010600    |
| 56a  | Fuel Level Sensor Seal Kit                      | 149510900    |
| 57.  | Relay Mounting Plate                            | 301069200    |
| 58.  | M6 x 25mm Screw                                 | 02941300     |
| 59   | M6 Washer                                       | 089422200    |
| 60   | M6 Nyloc Nut                                    | 048001000    |
| 61   | Key   | 09823900     |

# **C-SERIES TRACTOR HE Mk3** **REAR BODY ASSEMBLY**



DRWG No: T2040406  
 ISSUE No: 6

SECTION 4

**C-SERIES MK3 TRACTOR**  
**REAR BODY ASSEMBLY**  
**PARTS LIST**

|     | PART DESCRIPTION   | PART NUMBER          |
|-----|--|----------------------|
| 1.  | Seat   | 14947200             |
| 2.  | Seat Plate Adjuster R/H                                    | 30117900             |
| 3.  | Seat Plate Adjuster L/H                                    | 30118000             |
| 4.  | Rivet 5mm x 10mm   | 12824400             |
| 5.  | Compression Spring Universal                               | 25831100             |
| 6.  | Seat Handle  | 30203100             |
| 7.  | Starlock Washer 1/4"                                       | 08868700             |
| 8.  | Adjustable Seat Channel R/H<br>Adjustable Seat Channel L/H | 30117700<br>30117800 |
| 9.  | Tool Tray  | 14848500             |
| 10. | PTO Engage Bridge  | 32722500             |
| 11. | Spring Handbrake Block Torsion 1.75 Dia                    | 258000600            |
| 12. | Bolt M8 x 20mm   | 02825900             |
| 13. | Handbrake Handle   | 321124300            |
| 14. | Handbrake Link Rod   | 32953800             |
| 15. | Handbrake Chassis Joggle Plate                             | 301137800            |
| 16. | Handbrake Chassis Joggle Plate Boss                        | 183027400            |
| 17. | Bearing  | 10811600             |
| 18. | Washer 10.81i.d. 20.70 o.d. x 2mm Thk                      | 088002400            |
| 18a | 1/4" x 5/8" Shakeproof Washer                              | 08824200             |
| 19. | M5 Nyloc Nut   | 04885900             |
| 20. | Split Pin 1" x 1/8"  | 06823300             |
| 21. | Bolt M8 x 20mm   | 02825900             |
| 22. | M8 x40 x3mm Heavy Gauge Washer                             | 08925400             |
| 23. | Deck Lift Pin  | 31336800             |
| 24. | Spacer (Seat Spring)                                       | 31330800             |
| 25. | Spring Retaining Washer (seat)                             | 27835400             |
| 26. | Adjustable Seat Spring                                     | 25845600             |
| 27. | M10 x 40 Socket Cap Screw Zinc Plated                      | 028003400            |
| 28. | Handbrake Cup Holder                                       | 148013900            |
| 28a | Handbrake Lever Housing                                    | 148014000            |
| 29. | C-Series Handbrake Handle Knob                             | 187185300            |
| 30. | Handbrake Handle Badge 2002                                | 359505100            |
| 31. | Cross Shaft Deck Lift                                      | 327009400            |
| 32. | M5 Washer  | 088002800            |
| 33. | Handbrake Nylon Bush                                       | 149498000            |
| 34. | RH Sweeper Lift Cross Bar Conn Pl                          | 327171600            |
| 35. | LH Sweeper Lift Cross Bar Conn Pl                          | 327171700            |
| 36. | Jubilee Clip   | 11856900             |
| 37. | PTO `Danger` Decal   | 35809500             |
| 38. | Decal PTO Flap   | 35891200             |
| 39. | Bolt M8 x 45mm (Vac)                                       | 02941000             |

Nov 2007

SECTION 4

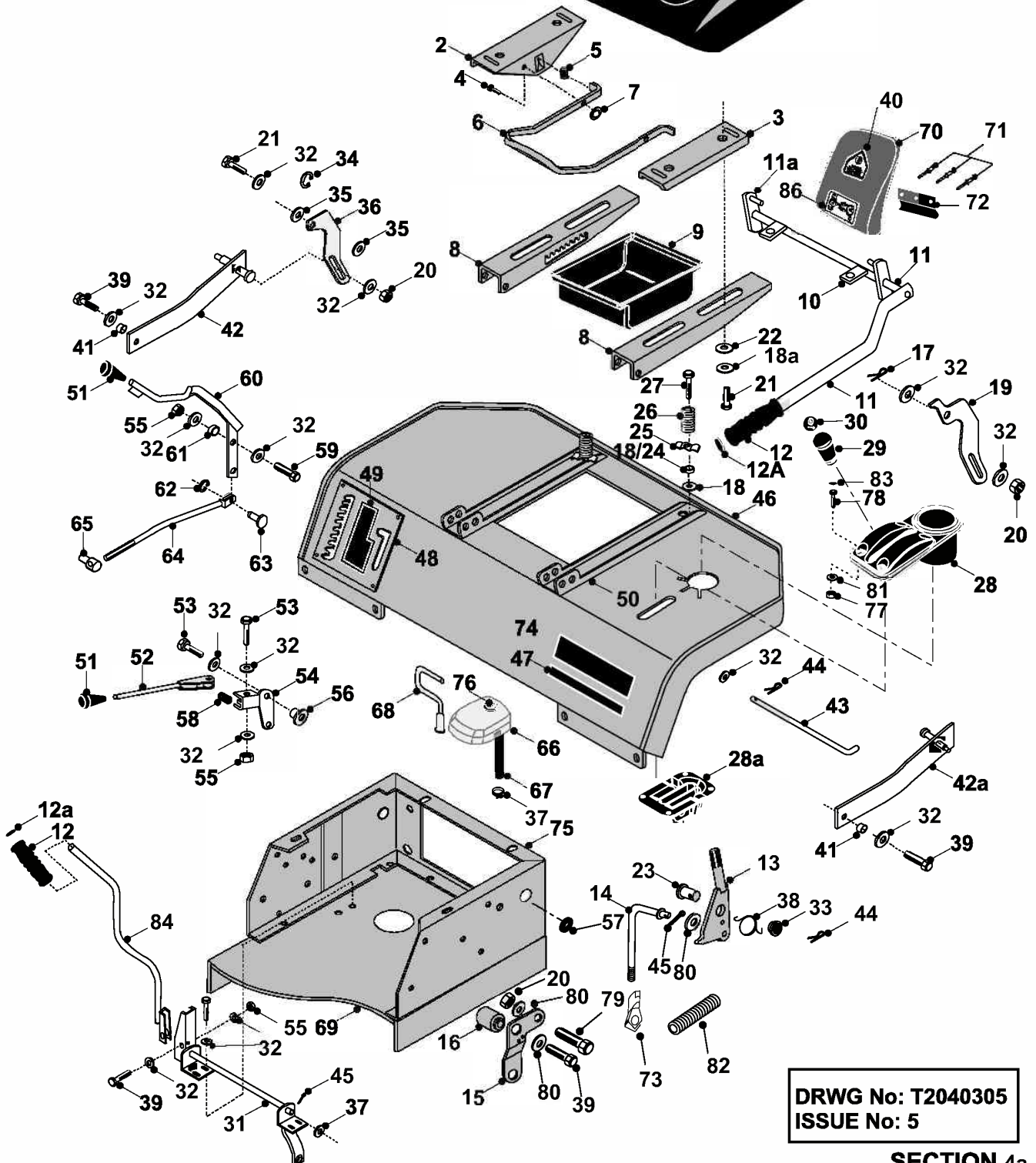
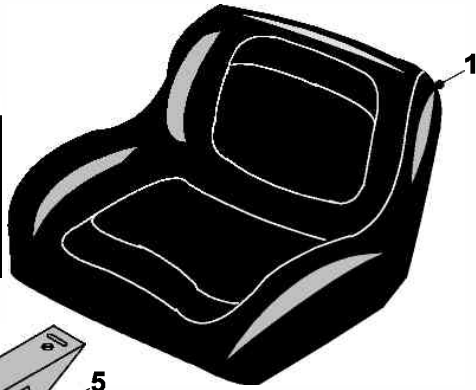
**C-SERIES MK3 TRACTOR**  
**REAR BODY ASSEMBLY**  
**PARTS LIST**

|     | PART DESCRIPTION            | PART NUMBER                   |
|-----|-----------------------------|-------------------------------|
| 40. | M8 Washer                   | 08819500                      |
| 41. | Spacer 9 x 8.3mm I.D.       | 31302700                      |
| 42. | HE Sweeper Lift Arm R/H     | 32720300                      |
| 43. | HE Sweeper Lift Arm L/H     | 32721100                      |
| 44. | R-Clip 2mm                  | 06849100                      |
| 45. | M8 Nyloc Nut                | 04920100                      |
| 46. | Rear Body Panel             | 327028500                     |
|     | Rear Body Panel manual      | 327028300                     |
| 47. | Decal - Deck Size 107cm/42" | 35931701                      |
| 48. | HE Sweeper Lift Plate       | 30133500                      |
| 49. | Rear Seat Box               | 32730801                      |
| 50. | Seat Channel (bolt on)      | 30144900                      |
| 51. | Lever Knob                  | 14804800                      |
| 52. | PTO Engage Lever            | 32708700                      |
| 53. | M8 x 30mm Hx Hd Bolt        | 018005700                     |
| 54. | PTO Level Plate – H.E. only | 30134500                      |
| 55. | Nut M8                      | 04920100                      |
| 56. | PTO Plate Spacer.           | 31305100                      |
| 57. | 16mm Open Grommet           | 52849700                      |
| 58. | Spring                      | 25831100                      |
| 59. | Washer 40mm o.d x 8.3mm i.d | 08104400                      |
| 60. | M6 Socket Screw Cap         | 148014300                     |
| 61. | Stainless Steel Wear Strip  | 301140300                     |
| 62. | K46 Oil Tank                | 148018600                     |
| 63. | Reservoir Hose              | 148014800                     |
| 64. | Sweeper Belt Guide Pin      | 32723800                      |
| 65. | Chassis 04                  | 327023302                     |
| 66. | PTO Flap Shell (H.E.)       | 149496300                     |
| 67. | Seat Pivot Rod              | 31301800                      |
| 68. | PTO Flap Hinge              | 302005200                     |
| 69. | Decal IBS Deck              | 35931400                      |
| 70. | Vent Valve Breather         | Tuff Torq Pt.No<br>1948592452 |
| 71. | E-Clip M12 Plated           | 078000800                     |
| 72. | Bearing Housing 17mm        | 27106600                      |
| 73. | Screw M5 x 16mm             | 019479500                     |
| 74. | Screw M6 x 20mm             | 018000300                     |
| 75. | Washer M6                   | 08827800                      |
| 76. | Nut Nyloc M6                | 04920500                      |
| 77. | Rose Joint M10 Rod          | 10872600                      |
| 78. | M10 x 30 Bolt               | 018003000                     |
| 79. | M10 Washer                  | 088002400                     |
| 80. | M10 Nut                     | 04886100                      |
| 81. | 42" Deck Spring             | 25906200                      |

**Nov 2007**

**SECTION 4**

# **C-SERIES TRACTOR MANUAL** **Mk3 REAR BODY ASSEMBLY**



DRWG No: T2040305  
 ISSUE No: 5

SECTION 4a

**C-SERIES MK3 TRACTOR**  
**REAR BODY ASSEMBLY**  
**PARTS LIST**

|     | PART DESCRIPTION                        | PART NUMBER |
|-----|---|-------------|
| 1.  | Seat                                    | 14947200    |
| 2.  | Seat Plate Adjuster R/H                 | 30117900    |
| 3.  | Seat Plate Adjuster L/H                 | 30118000    |
| 4.  | Rivet 5mm x 10mm                        | 12824400    |
| 5.  | Compression Spring Universal            | 25831100    |
| 6.  | Seat Handle                             | 30203100    |
| 7.  | Starlock Washer 1/4"                    | 08868700    |
| 8.  | Adjustable Seat Channel R/H             | 30117700    |
|     | Adjustable Seat Channel L/H             | 30117800    |
| 9.  | Tool Tray                               | 14848500    |
| 10. | PTO Hanging Plate                       | 32733300    |
| 11. | Sweeper Lift Lever                      | 32733200    |
| 11a | Sweeper Lift Connecting Plate           | 327016100   |
| 12. | Soft Handle Grip                        | 38936500    |
| 12a | Bag Tipping Handle Plug                 | 14880500    |
| 13. | Handbrake Handle                        | 321124300   |
| 14. | Handbrake Link Rod                      | 32953800    |
| 15. | Handbrake Chassis Joggle Plate          | 301137800   |
| 16. | Handbrake Chassis Joggle Plate Boss     | 183027400   |
| 17. | 19mm External Circlip                   | 07921200    |
| 18. | Washer 10.81i.d. 20.70 o.d. x 2mm Thk   | 088002400   |
| 18a | 1/4" x 5/8" Shakeproof Washer           | 08824200    |
| 19. | L/H Sweeper Lift Hook                   | 307177100   |
| 20. | M10 Nyloc Nut                           | 04886100    |
| 21. | Bolt M8 x 20mm                          | 02825900    |
| 22. | M8 x40 x3mm Heavy Gauge Washer          | 08925400    |
| 23. | Deck Lift Pin                           | 31336800    |
| 24. | Spacer (Seat Spring)                    | 31330800    |
| 25. | Spring Retaining Washer (seat)          | 27835400    |
| 26. | Adjustable Seat Spring                  | 25845600    |
| 27. | M10 x 40 Socket Cap Screw Zinc Plated   | 028003400   |
| 28. | Handbrake Cup Holder                    | 148013900   |
| 28a | Handbrake Lever Housing                 | 148014000   |
| 29. | C-Series Handbrake Handle Knob          | 187185300   |
| 30. | Handbrake Handle Badge 2002             | 359505100   |
| 31. | Gear Select Cross Over -Manual          | 32700400    |
| 32. | M8 Washer                               | 08819501    |
| 33. | Handbrake Nylon Bush                    | 149498000   |
| 34. | E-clip M12 Plated                       | 078000800   |
| 35. | M12 Washer                              | 088001200   |
| 36. | R/H Sweeper Lift Hook                   | 27114200    |
| 37. | Jubilee Clip                            | 11856900    |
| 38. | Spring Handbrake Block Torsion 1.75 Dia | 258000600   |
| 39. | Bolt M8 x 45mm (Vac)                    | 02941000    |

**Nov 2007**

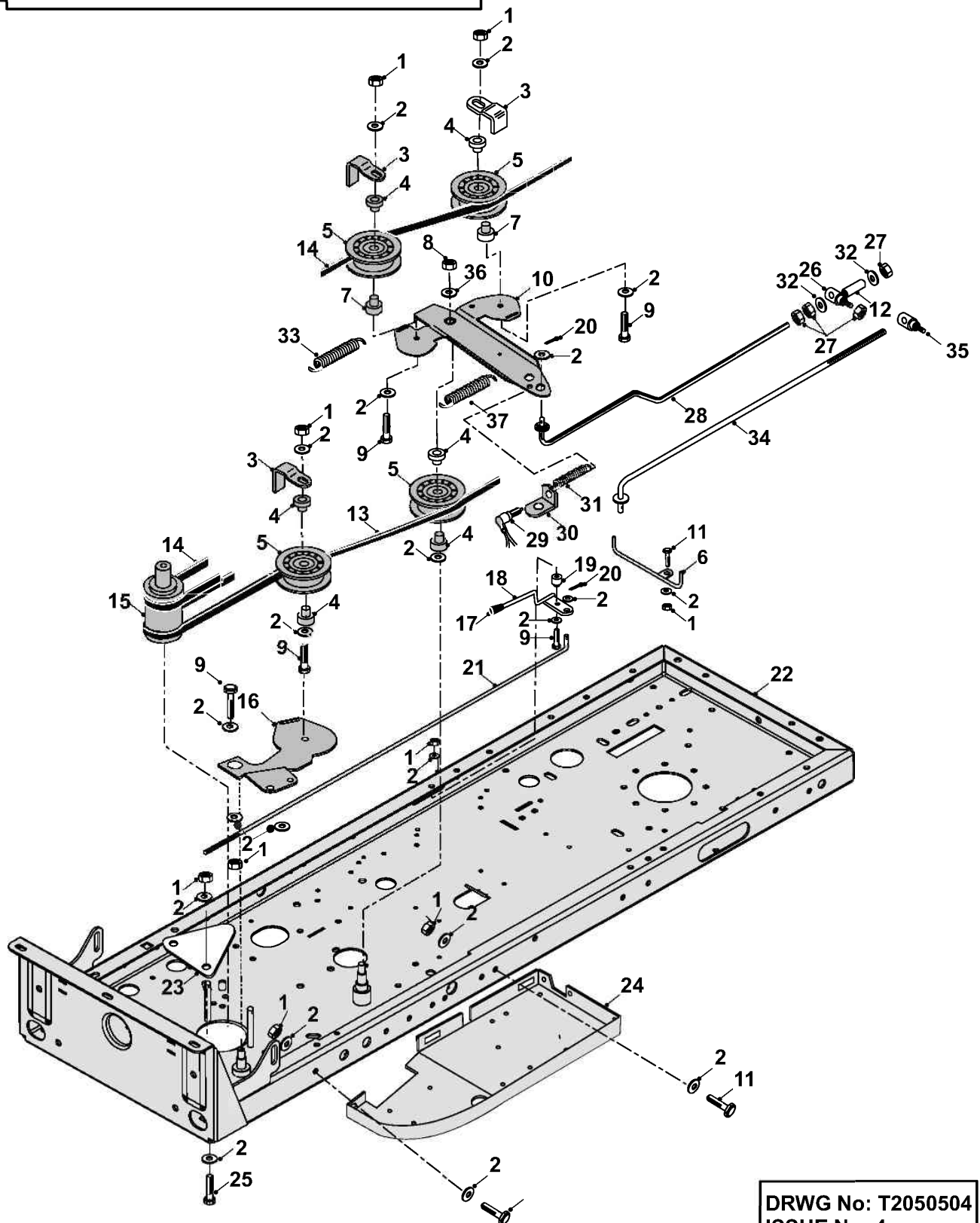
**SECTION 4a**



**C-SERIES MK3 TRACTORREAR BODY ASSEMBLYPARTS LIST**

|     | PART DESCRIPTION                             | PART NUMBER                     |
|-----|--|---------------------------------|
| 40. | PTO Danger Decal                             | 35809500                        |
| 41. | Spacer 9 x 8.3mm I.D.                        | 31302700                        |
| 42. | PGC Link Arm (RH)                            | 32725900                        |
| 42a | PGC Link Arm (LH)                            | 32726000                        |
| 43. | Seat Pivot Rod                               | 31301800                        |
| 44. | R-Clip 2mm                                   | 06849100                        |
| 45. | Split Pin 1" x 1/8"                          | 06823300                        |
| 46. | Rear Body Panel HE<br>Rear Body Panel manual | 327028500<br>327028300          |
| 47. | Decal - Deck Size 107cm/42"                  | 35931700                        |
| 48. | Rear Body Deck Gate Plate (H.E. Models)      | 303071500                       |
| 49. | Decal Deck Height/ Engage                    | 358005602                       |
| 50. | Seat Channel (bolt on)                       | 30144900                        |
| 51. | Lever Knob                                   | 14804800                        |
| 52. | PTO Engage Lever                             | 32708700                        |
| 53. | M8 x 30mm Hx Hd Bolt                         | 018005700                       |
| 54. | PTO Level Plate – H.E. only                  | 30134500                        |
| 55. | Nut M8                                       | 04920100                        |
| 56. | PTO Plate Spacer.                            | 31305100                        |
| 57. | 16mm Open Grommet                            | 52849700                        |
| 58. | Spring                                       | 25831100                        |
| 59. | Bolt M8 x 50mm                               | 018001800                       |
| 60. | Deck Adjustment Lever                        | 327003300                       |
| 61. | Deck Height Pivot Boss Spacer                | 18317400                        |
| 62. | Circlip 3/8"                                 | 07846800                        |
| 63. | Clevis Pin3/8"                               | 31340800                        |
| 64. | Deck Height Adjust Yoke                      | 32703300                        |
| 65. | Deck Height Trunnion                         | 18805400                        |
| 66. | K46 Oil Tank                                 | 148018600                       |
| 67. | Reservoir Hose                               | 148014800                       |
| 68. | Sweeper Belt Guide Pin                       | 32723800                        |
| 69. | Chassis 04                                   | 327023302                       |
| 70. | PTO Flap Shell (H.E.)                        | 149496300                       |
| 71. | Pop Rivet 5mm x 10mm                         | 12824400                        |
| 72. | PTO Flap Hinge                               | 149496500                       |
| 73. | Rose Joint 10mm                              | 10872600                        |
| 74. | decal IBS Deck                               | 35931400                        |
| 75. | Rear Seat Box                                | 32730801                        |
| 76. | Vent Valve Breather                          | Tuff Torq Part No<br>1948592452 |
| 77. | Nut Nyloc M6                                 | 04920500                        |
| 78. | Rscrew M6 x 20mm                             | 018000300                       |
| 79. | M10 x 30 Bolt                                | 018003000                       |
| 80. | M10 Washer                                   | 088002400                       |
| 81. | Washer M6                                    | 08827800                        |
| 82. | 42" Deck Spring                              | 25906200                        |
| 83. | M6 Socket Screw Cap                          | 14801430                        |
| 84. | Speed Select/Gear Lever-Manual               | 32731200                        |

**NEW C-SERIES MK3**  
**PTO & TRANSMISSION ASSY**

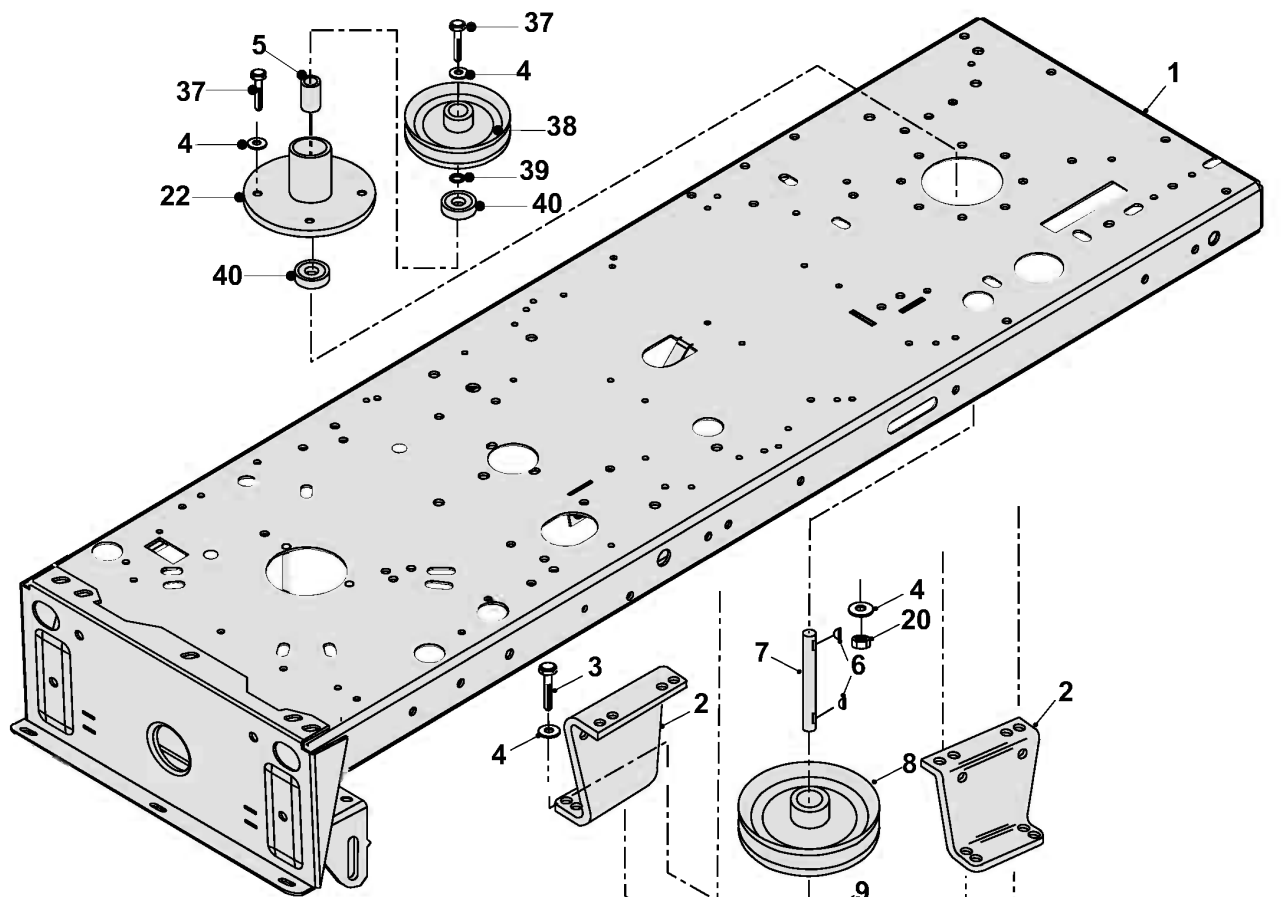


DRWG No: T2050504  
ISSUE No: 4

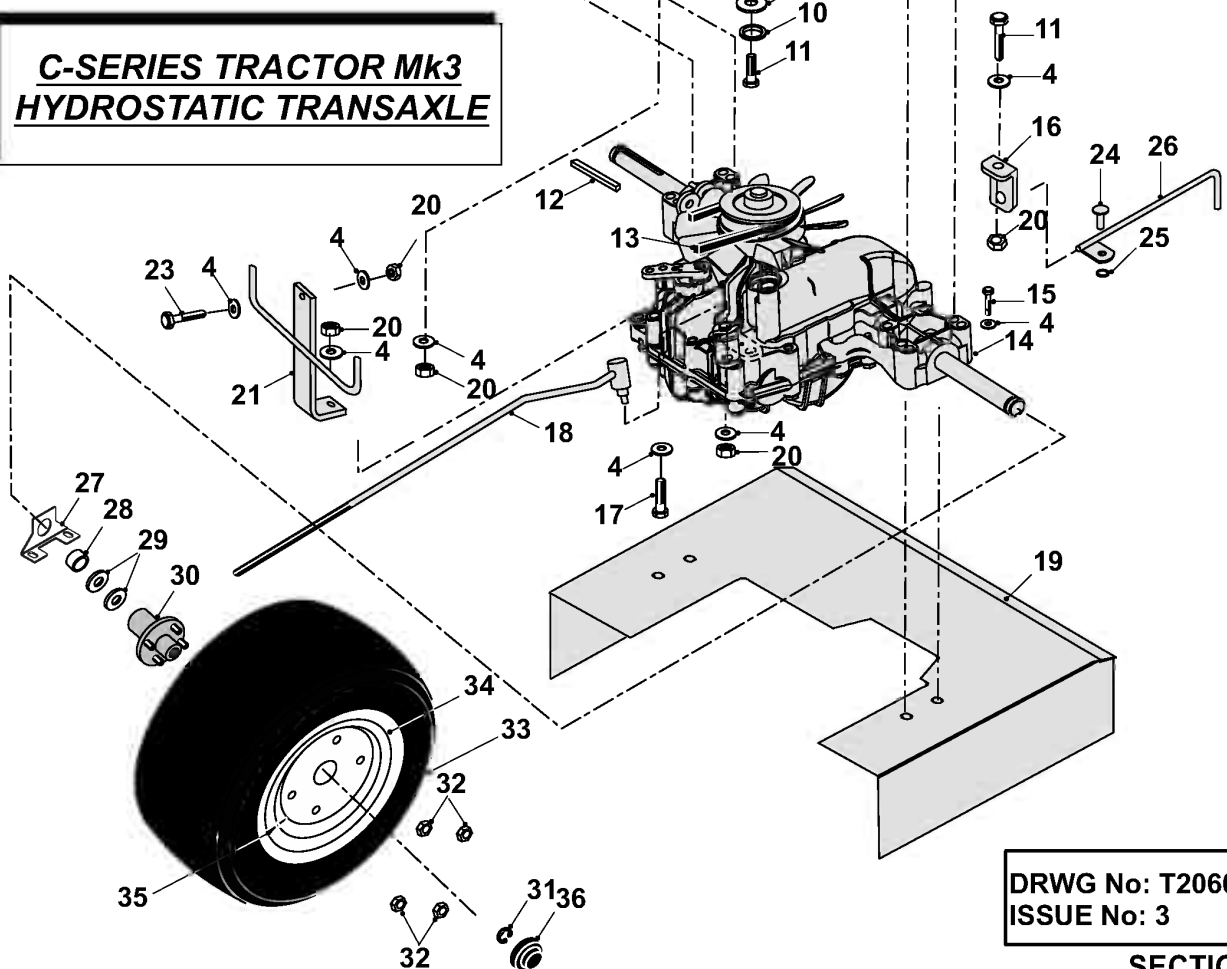
SECTION 5

**C-SERIES MK3 TRACTOR**  
**PTO & TRANSMISSION ASSEMBLY**  
**PARTS LIST**

|     | PART DESCRIPTION                         | PART NUMBER |
|-----|--|-------------|
| 1.  | Nut M8                                   | 04920100    |
| 2.  | M8 Washer                                | 08819500    |
| 3.  | Belt Retaining Bracket                   | 27105800    |
| 4.  | Spacer Jockey Wheel                      | 18831600    |
| 5.  | PTO Jockey Pulley Plastic                | 20811500    |
| 6.  | PTO Rear Belt Guide                      | 328955500   |
| 7.  | Sweeper Jockey Cap                       | 31351100    |
| 8.  | M10 Nyloc Nut                            | 04886100    |
| 9.  | Bolt M8 x 50mm                           | 018001800   |
| 10. | Jockey Pulley Plate                      | 328955100   |
| 11. | Bolt M8 x 20mm                           | 02825900    |
| 12. | MK3 Park Brake Engage Rod Sleeve         | 174008900   |
| 13. | PTO Drive Belt Dayco A82                 | 2281110A    |
| 14. | A79 Super 11 Belt Transmission Drive K46 | 229503400   |
| 15. | Magstop Engine Pulley                    | 31330500    |
| 16. | PTO Jockey Plate                         | 307187000   |
| 17. | Plastic Lever Cap                        | 14946200    |
| 18. | Deck Tension Lever - H.E - D/H           | 327361800   |
|     | Deck Tension Lever – Hiwin Actuator      | 328956700   |
| 19. | Pivot (Deck Overlock)                    | 18833700    |
| 20. | Split Pin 1/8" x 1"                      | 06823300    |
| 21. | Deck Tension Rod                         | 31805601    |
| 22. | Chassis 04                               | 327023302   |
| 23. | Clutch Retaining Bracket                 | 302007000   |
| 24. | Running Board R/H                        | 327177700   |
|     | Running Board L/H (Not Illustrated)      | 327177800   |
| 25. | Bolt M8 x 20mm                           | 02825900    |
| 26. | Park Brake Engage Rod Trunnion           | 187186100   |
| 27. | Nut M10 Nyloc                            | 04886100    |
| 28. | Hand Brake Engage / Park Brake Rod       | 318952401   |
| 29. | Pull Safety Switch                       | 44945001    |
| 30. | Brake Switch Mounting Plate              | 302005400   |
| 31. | Brake Return Spring                      | 25812201    |
| 32. | Washer 10.8 id x 20.7 od x 2mm Thk       | 088002400   |
| 33. | Return Spring                            | 259405600   |
| 34. | Deck Tension/P.T.O Engage Rod            | 31805600    |
| 35. | Trunnion (PTO Engage)                    | 18806100    |
| 36. | M10 Washer                               | 088002400   |
| 37. | Deck Assist Spring                       | 25885300    |



**C-SERIES TRACTOR Mk3**  
**HYDROSTATIC TRANSAXLE**



DRWG No: T2060403  
ISSUE No: 3

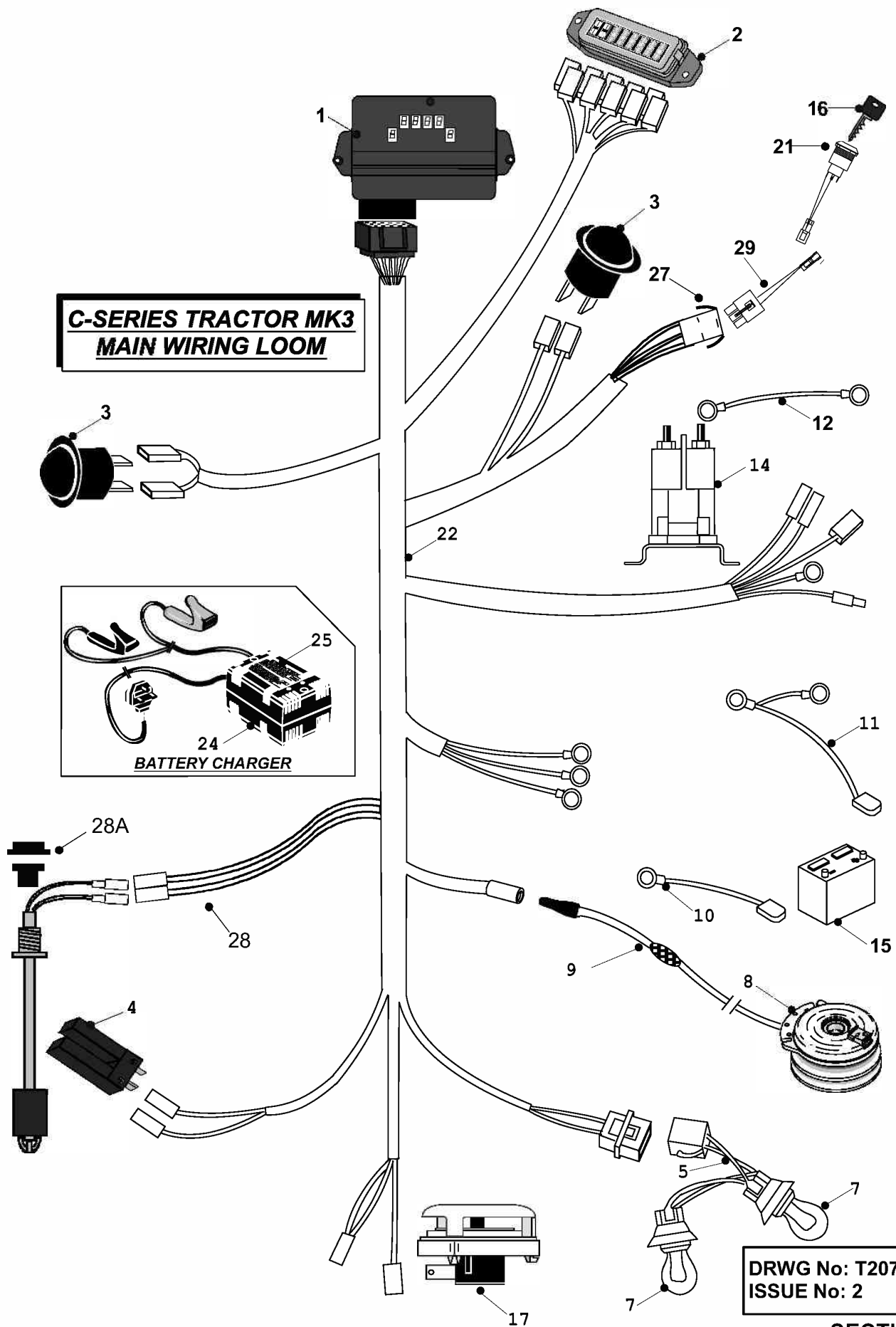
SECTION 6

**C-SERIES MK3 TRACTOR  
TRANSAXLE ASSEMBLY  
PARTS LIST**

|     | PART DESCRIPTION                           | PART NUMBER |
|-----|--|-------------|
| 1.  | Chassis 04                                 | 327023302   |
| 2.  | Transaxle Bracket                          | 307025900   |
| 3.  | M8 x 75mm Hex Bolt Zinc Plated & Clear PAS | 018005600   |
| 4.  | M8 Washer                                  | 088195000   |
| 5.  | PTO End Spacer                             | 31306200    |
| 6.  | Key  | 09823900    |
| 7.  | PTO Shaft                                  | 31306000    |
| 8.  | Pulley 7"                                  | 20870700    |
| 9.  | Washer M8 x 20 x 3 unplated                | 089418600   |
| 10. | M8 Star Washer (Vac)                       | 088000800   |
| 11. | Bolt M8 x 25mm                             | 02826000    |
| 12. | Key 2" x 3/16" (Rear Wheel)                | 09830700    |
| 13. | A79 Super 11 Belt – K46                    | 229503400   |
| 14. | K46 Hydrostatic Transaxle                  | 478000300   |
| 15. | Bolt M8 x 65mm                             | 028662700   |
| 16. | 99 C-Series Dump Rod Bracket               | 303071400   |
| 17. | Bolt M8 x 50mm                             | 018001800   |
| 18. | Handbrake Transmission Rod                 | 327360900   |
| 19. | K46 Transaxle Deflector                    | 30307101    |
| 20. | Nut M8                                     | 04920100    |
| 21. | Transaxle Support Bracket                  | 313009400   |
| 22. | PTO Bearing Housing                        | 32700300    |
| 23. | Bolt M8 x 25mm                             | 02826000    |
| 24. | Rivet 4.8 x 16mm Alloy Pop                 | 12860100    |
| 25. | Starlock Washer 1/4"                       | 08868700    |
| 26. | Dump Valve Lever                           | 321123301   |
| 27. | K46 Transaxle Thrust Washer                | 307191801   |
| 28. | K46 Transaxle Wheel Spacer                 | 189498700   |
| 29. | Washer 19mm (Rider)                        | 08829900    |
| 30. | Wheel Hub for 20" Wheel c/w studs & nuts   | 198002000   |
| 31. | 19mm External Circlip                      | 07921200    |
| 32. | C- Series Wheel Nut                        | 048000901   |
| 33. | 20" Rear Tyre                              | 198001200   |
| 34. | Rear Wheel Rim 20"                         | 198001100   |
|     | Grease Nipple                              | 11898800    |
|     | `O' Ring                                   | 24898700    |
|     | M8 Star Washer                             | 088000800   |

**C-SERIES MK3 TRACTOR  
TRANSAXLE ASSEMBLY  
PARTS LIST**

|     | PART DESCRIPTION                  | PART NUMBER |
|-----|-----------------------------------|-------------|
| 35. | Wheel Valve                       | 14889200    |
| 36. | Hub Cap ( Moulded)                | 14811800    |
| 37. | Bolt M8 x 20mm                    | 02825900    |
| 38. | PTO Pulley 5"                     | 208000600   |
| 39. | PTO End Spacer                    | 31306200    |
| 40. | Bearing (PTO Housing)             | 10811600    |
| 41. | Bolt M10 x 30mm                   | 018002100   |
| 42. | Tow Bracket                       | 29200101    |
| 43. | Nut M10                           | 04872100    |
| 44. | Washer 10.8 i.d x 20.7 o.d x 2 mm | 088002400   |

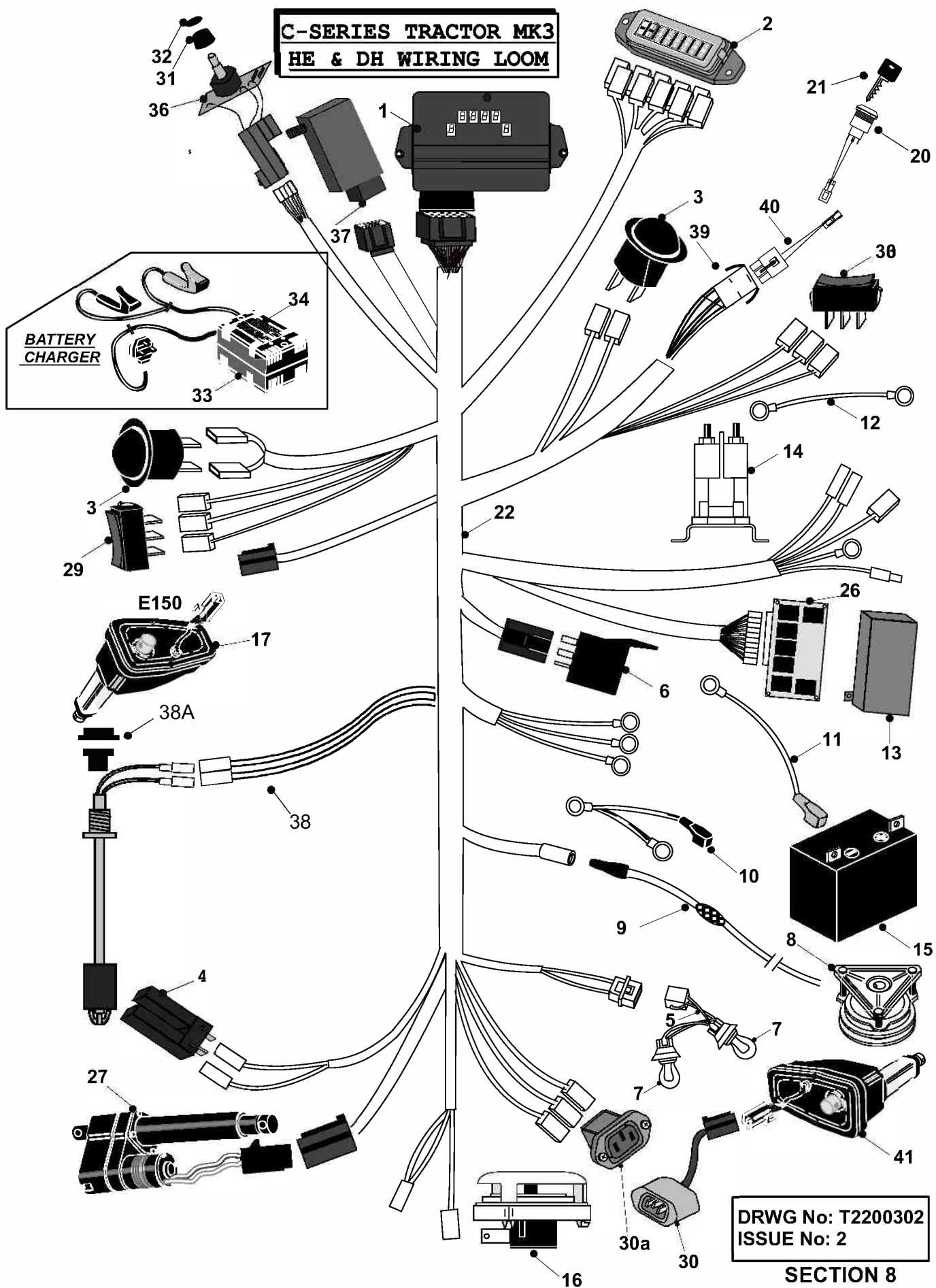


**C-SERIES MK3 TRACTOR**  
**MAIN WIRING LOOM PARTS LIST**

|     | PART DESCRIPTION  | PART NUMBER           |
|-----|---|-----------------------|
| 1   | For the main C Series PCB, please see reference table on page 27                                      |                       |
| 2   | 2002 Fuse Box Holder  | 301139400             |
| 3   | Rocker Switch (on / off / on)   | 449665600             |
| 4   | Position sensor Switch  | 449666600             |
| 5   | Headlight Loom  | 448010400             |
| 6   | Tie Wrap Mount (not illustrated)  | 52816800              |
| 7   | Bulb Hella 21W  | 448008500             |
| 8   | Electric Clutch Magstop   | 44936100              |
| 9   | Clutch Loom Magstop   | 44946800              |
| 10  | Lead Battery to Solenoid (C300H, C300M, C400H & C600H)<br>18 & 20 HP Lead Battery to Solenoid (C800H) | 44812602<br>448010000 |
| 11  | Earth Lead (short)  | 449662800             |
| 11a | Earth Lead (Long)   | 449662900             |
| 12  | Start Lead (Briggs & Stratton Engines only)   | 44812500              |
| 13  | Tie Wrap Adhesive (not Illustrated)   | 52816700              |
| 14  | Starter Solenoid Briggs Engines Only  | 44814801              |
| 15  | Battery 12V (Dry Charged)   | 458141200             |
| 16  | Ignition Key  | 529471700             |
| 17  | Seat Switch   | 44949500              |
| 18  | Countax / B&S Engine Loom Block Connector - C-Series M (not illustrated)                              | 448015600             |
| 19  | 10A Amp Fuse (not illustrated)  | 44889500              |
| 20  | Fuse Spade 20A (not illustrated)  | 44835000              |
| 21  | Ignition Switch   | 449683300             |
| 22  | C Series Main wiring loom   | 449663000             |
| 23  | Tie Wrap (not Illustrated)  | 52825400              |
| 24  | Battery Charger   | 449562800             |
| 25  | Battery Charger Decal   | 359509300             |
| 26  | Battery Charger Instructions (not illustrated)  | 36919400              |
| 27  | Ignition Switch Sub Loom  | 449563200             |
| 28  | Fuel Level Sender   | 449665300             |
| 28a | 16mm Sealing Washer<br>16mm Shock Proof Washer<br>Fuel Sensor Nut                                     | 149510900             |
| 29  | Ignition Adaptor Loom   | 449683400             |



**C-SERIES TRACTOR MK3  
HE & DH WIRING LOOM**



**C-SERIES TRACTOR MK3**  
**H.E. LOOM**  
**PARTS LIST**

|     | PART DESCRIPTION  | PART NUMBER                         |
|-----|---|-------------------------------------|
| 1   | For the main C Series HE PCB, please see reference table on page 27   |                                     |
| 2   | Fuse Box Holder 2002 C-Series   | 301139400                           |
| 3   | Switch Momentary on 2003 ( R13208FAAA)  | 448008700                           |
| 4   | Position Sensor Switch  | 449666602                           |
| 5   | 2003 C-Series Headlight Loom  | 448010400                           |
| 6   | Electric Relay 12v / 30amp Omron  | 449559100                           |
| 7   | Bulb C-Series 2002 PY21W  | 448008500                           |
| 8   | Warner Electric Clutch 20/50  | 44936100                            |
| 9   | Clutch Loom Magstop Modular till 060403<br>Clutch Loom Magstop 060403 to current  | 44946800<br>44947500                |
| 10  | 18 & 20hp Battery Lead  | 448010000                           |
| 11  | Earth Lead 2003   | 44812402                            |
| 12  | Start Lead 3923   | 44812500                            |
| 13  | HE PCB Cover 2003   | 148016700                           |
| 14  | Starter Solenoid Briggs only not used on Honda  | 44814801                            |
| 15  | Battery – Dry Charged 18/50   | 458141200                           |
| 16  | Seat Switch Milsco Seat 97)   | 44949500                            |
| 17  | Warner E150 Actuator Serial No from 011203 to 021108<br>Linak LA10 Actuator Serial No from 021108 to 031015<br>Hiwin Serial No from 031015 to Current Day | 448007700<br>448008600<br>448015700 |
| 18  | 10AMP Fuse(not illustrated)   | 44889500                            |
| 19  | Fuse Spade 20AMP(not illustrated)   | 44835000                            |
| 20  | Ignition Switch Serial No Until 40824<br>Ignition switch Serial No from 40824 to 71203<br>Ignition Switch Serial No from 71203 to date                    | 44812900<br>448010700<br>449683300  |
| 21  | Ignition Key Until Serial No 40824<br>Ignition Key Serial No from 40824 to 71203<br>Ignition Key Serial No from 71203 to date                             | 52813000<br>528006900<br>529471700  |
| 22  | HE Loom for full electric tractors<br>Dial-a-height Loom for tractors with deck lift only   | 449663200<br>449663100              |
| 23  | Tie Wrap (Not Illustrated)  | 52825400                            |
| 24  | Tie Wrap Mount (Not Illustrated)  | 52816800                            |
| 25  | Tie Wrap Self Adhesive (Not Illustrated)  | 52816700                            |
| 26  | HE PCB September upto serial no: from 20930 to 40921<br>HE PCB September 40921- Current   | 448009200<br>448017200              |
| 27  | Sweeper Actuator serial no: from 990218 to 00718<br>Actuator Warner LA10 serial no:from 00718 to current  | 448002800<br>449559500              |
| 28  | Fuse 30AMP Spade D18/50,Diesel Fuse Box – not illustrated   | 449559200                           |
| 29  | Switch on / off / on 2003 (R1311DAAA)serial no from 21108 to 70725<br>Switch July 70725 – current   | 449665600                           |
| 30  | PGC Net Emptying Loom used on C series  | 448004300                           |
| 30a | Rear Socket For Net Emptying Loom –Trac   | 448005600                           |
| 31  | Lift Kit Collet Knob  | 148010601                           |
| 32  | Collet Knob Cap – Rotary HE PCB   | 148011001                           |
| 33  | Battery Charger   | 449563000                           |

|     |   |                                  |
|-----|---|----------------------------------|
| 34  | Battery Charger Decal   | 359509600                        |
| 35  | Battery Charger Instructions (not Illustrated)  | 36919400                         |
| 36  | Dial height Switch September 2004- current  | 449561501                        |
| 37  | For the C Series Dial a Height PCB, please see reference table below  |                                  |
| 38  | Fuel Level Sender   | 449665300                        |
| 38a | 16mm Sealing Washer<br>16mm Shock Proof Washer<br>Fuel Sensor Nut   | Kit for all 3 parts<br>149510900 |
| 39  | Ignition Switch Sub Loom Serial No from 40824 to 71203<br>Ignition Switch Sub Loom Serial No from 71203 to date | 449563200<br>449683400           |
| 40  | Adaptor Loom  | 449683400                        |
| 41  | C Series Sweeper Empty Actuator   | 449662200                        |

Nov 2007

SECTION 8

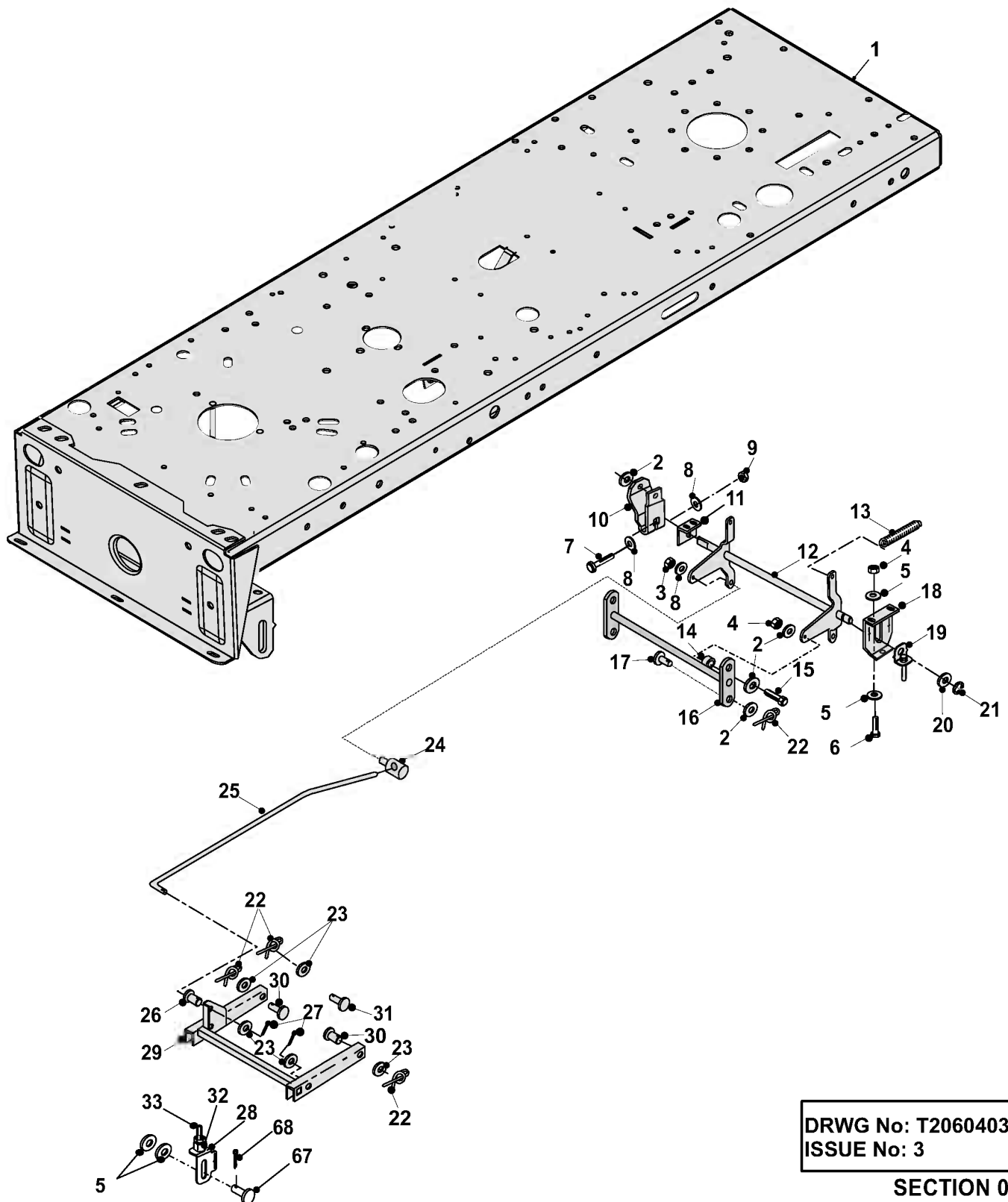
## Printed Circuit Boards (P.C.Board)

(The serial number is the first 5 digits from your barcode on your machine)

(\* = PCB Board Only – for switch order part number: 449561501)

|   | Model           | Serial No.                 | Engine           | Main PCB  | HE PCB    | Dial Height PCB |
|---|-----------------|----------------------------|------------------|-----------|-----------|-----------------|
| <b>Countax<br/>C Series<br/><br/>(96 –<br/>current)</b> | C Series non HE | 60101- 80624<br>( '96-'98) | Briggs           | 26817000  | N/A       | N/A             |
|   | C Series non HE | 80625- 20901<br>( '98-'02) | Briggs           | 448001803 | N/A       | N/A             |
|   | C Series non HE | 20902- 40915<br>( '02-'04) | Honda            | 448009402 | N/A       | N/A             |
|   | C Series non HE | 40916- 90615<br>( '04-'09) | Honda            | 449878400 | N/A       | N/A             |
|   | C Series non HE | 90616<br>(2009)- Current   | Kawasaki         | 448017005 | N/A       | N/A             |
|   | C Series non HE | 90616<br>(2009)- Current   | Kohler           | 449878000 | N/A       | N/A             |
|   | C Series non HE | 90616<br>(2009)- Current   | Honda<br>/Briggs | 449878400 | N/A       | N/A             |
|   | C Series HE     | 60102- 80624<br>( '96-'98) | Briggs           | 26817000  | 44910901  | N/A             |
|   | C Series HE     | 80625-11101<br>( '98-'01)  | Briggs           | 448001903 | N/A       | N/A             |
|   | C Series HE     | 11202- 20911<br>( '01-'02) | Briggs           | 448002000 | N/A       | 449559602       |
|   | C Series HE     | 20912- 40915<br>( '02-'04) | Honda            | 448009402 | 448009200 | 449560602       |
|   | C Series HE     | 40916- 90615<br>( '04-'09) | Honda            | 449878400 | 448017200 | 448017104 *     |
|   | C Series HE     | 90616<br>(2009)- Current   | Kawasaki         | 448017005 | 448017200 | 448017104 *     |

**C-SERIES TRACTOR Mk3**  
**DECK CRADLE ASSEMBLY**



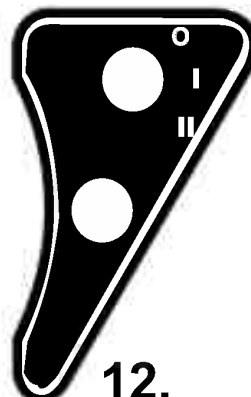
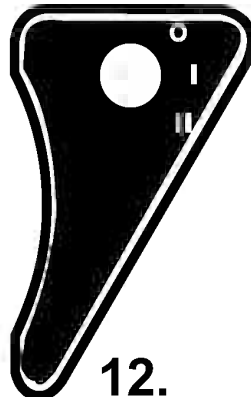
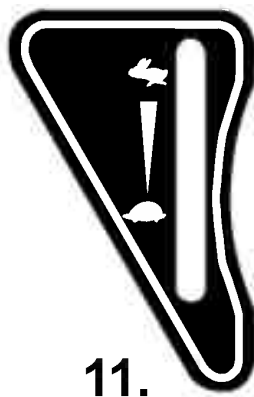
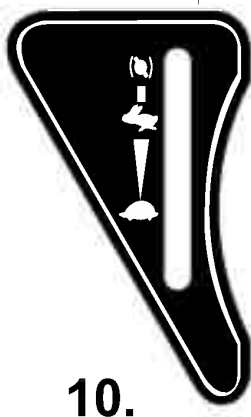
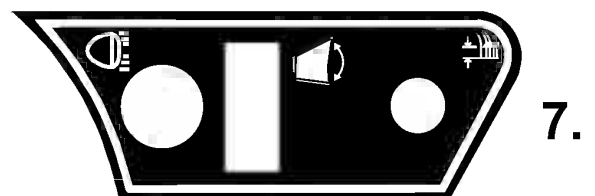
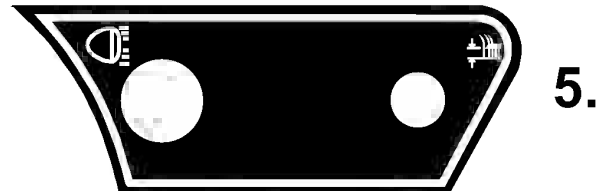
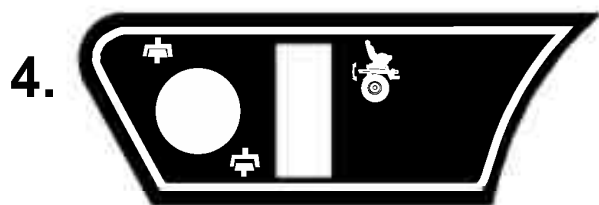
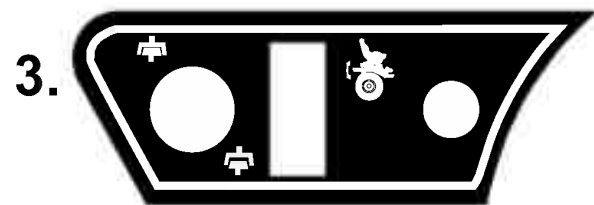
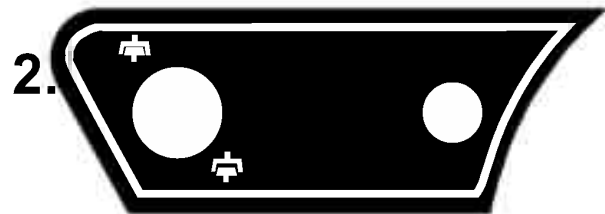
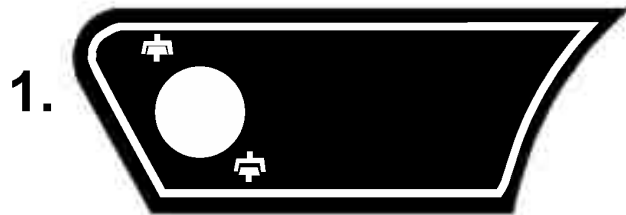
DRWG No: T2060403  
ISSUE No: 3

SECTION 09

**C SERIES MK3 TRACTOR**  
**DECK CRADLE ASSEMBLY Parts List**

|    | PART DESCRIPTION  | PART NUMBER            |
|----|---|------------------------|
| 1  | Chassis   | 327023302              |
| 2  | Washer M8 x 25 x 3 Unplated                             | 089418600              |
| 3  | M8 x 16mm M/Screw                                       | 028001000              |
| 4  | Nut M8  | 04920100               |
| 5  | M8 Washer   | 08819501               |
| 6  | Bolt M8 x 20mm  | 02825900               |
| 7  | M10 x 55 Hex Head Bolt                                  | 018002400              |
| 8  | Washer 10.8 i.d. X 20.7 o.d x 2mm Thk                   | 0880002400             |
| 9  | M10 Nyloc Nut   | 04886100               |
| 10 | Lift Arm (20" Wheel Model)                              | 301122400              |
| 11 | Deck Hanging Bracket (Rear)                             | 27102001               |
| 12 | Deck Hanging Bar (Rear)<br>Rear Deck Lift cradle (H.E.) | 327361700<br>328954100 |
| 13 | Sweeper Lift assist Spring                              | 25908801               |
| 14 | Spacer 9mm x 8.3mm id                                   | 31302700               |
| 15 | M8 x 30mm Hx Hd Bolt Zinc Plt & Clear Passivated        | 018005700              |
| 16 | Deck Lift Cradle Rear                                   | 328961100              |
| 17 | Deck Lift Pin Rear                                      | 31337200               |
| 18 | Rear Deck Level Bracket                                 | 301143700              |
| 19 | Rear Deck Cradle Adjuster                               | 327029300              |
| 20 | Washer ¾ T3 LP  | 08823000               |
| 21 | M12 'E' Clip  | 078000800              |
| 22 | Rue Clip  | 11836700               |
| 23 | M12 Washer  | 088001200              |
| 24 | 2002 Tractor Deck Level Trunnion                        | 189497500              |
| 25 | Height Adjuster Rod                                     | 18805900               |
| 26 | Deck lift Pin   | 31339400               |
| 27 | Split Pin 1/8" x 1"                                     | 07823300               |
| 28 | Deck Adjustment Plate                                   | 27115100               |
| 29 | Deck Carrying (Front)                                   | 32703700               |
| 30 | Deck Lift Pin (Front)                                   | 31336800               |
| 31 | Deck Push Rod Pin                                       | 31336800               |
| 32 | Deck Level Adjuster Nut                                 | 189501801              |
| 33 | M/Screw M10 x 60mm                                      | 358009301              |

**C-SERIES TRACTOR MK3**  
**DECALS (Page 1.)**



DRWG No: T2160301(P1)  
 ISSUE No: 1

13.



# C-SERIES TRACTOR MK3 DECALS (Page 2)

17.



15.

97 CM / 38"

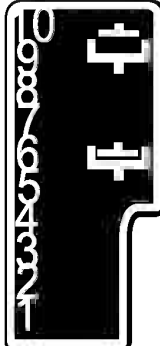
14.



16.



18.



(MANUAL)

19.



(H.E.)

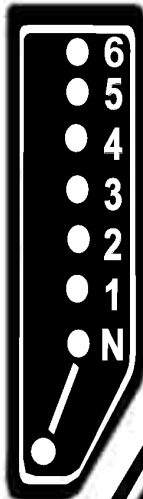
20.



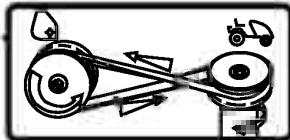
24.

COUNTAX

21.



22.



25.



27.



23.



26.



29.

C600H

POWERED BY HONDA

L/H

POWERED BY HONDA

C600H

R/H

29.

C800H

Dial Height Control

POWERED by Honda Engines

L/H

POWERED by Honda Engines

Dial Height Control

C800H

R/H

DRWG No: T2160301(P2)  
ISSUE No: 1

SECTION 10

**C-SERIES TRACTOR MK3****DECALS  
PARTS LIST**

|     | PART DESCRIPTION                                  | PART NUMBER                |
|-----|---|----------------------------|
| 1.  | Deck Engage Dash Decal 2003 C-Series              | 358026400                  |
| 2.  | Deck Engage / Choke Decal 2003                    | 358028800                  |
| 3.  | Clutch / Sweeper / Choke (Rectangular) Decal 2003 | 358031000                  |
| 4.  | Clutch / Sweeper (Rectangular) Decal 2003         | 358031100                  |
| 5.  | Deck / HLight Consol Decal 2003                   | 358031400                  |
| 6.  | Headlight – Dash 2003 C-Series                    | 358026200                  |
| 7.  | Deck / Net / HLight Consol Dcl 2003               | 358031500                  |
| 8.  | Decal Dash Display 2003 ( Version 1.)             | 358027100 use<br>358032900 |
| 9.  | Decal Dash Display 2003 ( Version 2.)             | 358032900                  |
| 10. | Choke / Throttle Dash Decal 2003                  | 358026500                  |
| 11. | Throttle Dash Decal 2003                          | 358026900                  |
| 12. | Dash Ignition Decal 2003 C-Series                 | 358026600                  |
|     | Dash Ignition Decal 2007 C-Series                 | 359513600                  |
| 13. | Rear Body PTO Engage Decal 2003                   | 35882701                   |
| 14. | C-Series Handbrake Handle Badge                   | 359505100                  |
| 15. | Decal – 97cm Deck Size                            | 35931601                   |
|     | Decal – 107cm Deck Size                           | 35931701                   |
| 16. | Sweeper Height Decal 2003                         | 35937601                   |
| 17. | IBS Decal 2003                                    | 35931301                   |
| 18. | Deck Height PTO Disengage Manual Decal 2003       | 358034200                  |
| 19. | DK Height / PTO Engage Rear Body Decal 03         | 358005602                  |
| 20. | Instructions Decal 2003                           | 358027200                  |
| 21. | 6 Speed Gear Select Decal                         | 358028900                  |
| 22. | Sweeper Belt Decal (Symbols Only)                 | 35891200                   |
| 23. | PTO Danger Label                                  | 35809500                   |
| 24. | Pegged Badge Countax ( Countax Yellow)            | 149499000                  |
| 25. | Decal Countax Badge                               | 359513400                  |
| 26. | Noise Label Decal 100db – Nov 01                  | 35809701                   |
|     | Decal 105 Decibel – Nov 01                        | 359497101                  |
| 27. | Rider Deck Danger Decal                           | 35803300                   |
| 28. | Decal C300H Honda L/H Side Panel 2003             | 358028401                  |
|     | C300H Honda RH Side Panel Decal 2003              | 358028501                  |
|     | C300M B&S LH Side Panel Decal 6 Speed             | 359005000                  |
|     | C300M B&S RH Side Panel Decal 6 Speed             | 359004900                  |
|     | C400H Honda Twin LH Side Panel Decal 03           | 358027500                  |
|     | Decal C400H Honda Twin RH Side Panel              | 358027400                  |
|     | C600H Honda LH Side Panel Decal                   | 359004601                  |
|     | C600H Honda RH Side Panel Decal                   | 359004501                  |
|     | C600HE LH Side Panel Decal 2003                   | 358029500                  |
|     | C600HE RH Side Panel Decal 2003                   | 358029400                  |

**Nov 2007****SECTION 10****C-SERIES TRACTOR MK3**



**DECALS**  
**PARTS LIST**

|     | PART DESCRIPTION                       | PART NUMBER |
|-----|--|-------------|
| 28. | C800H LH Side Panel Decal 2003         | 358028000   |
|     | C800H RH Side Panel Decal 2003         | 358028100   |
|     | C800HE Honda LH Side Panel Decal       | 359004800   |
|     | C800HE Honda RH Side Panel Decal       | 359004700   |
| 29. | C300H Dial Height Side Panel Decal L/H | 358033000   |
|     | C300H Dial Height Side Panel Decal R/H | 358033100   |
|     | C400H Dial Height Side Panel Decal L/H | 358033200   |
|     | C400H Dial Height Side Panel Decal R/H | 358033300   |
|     | C600H Dial Height Side Panel Decal L/H | 358033400   |
|     | C600H Dial Height Side Panel Decal R/H | 358033500   |
|     | C800H Dial Height Side Panel Decal L/H | 358033600   |
|     | C800H Dial Height Side Panel Decal R/H | 358033700   |