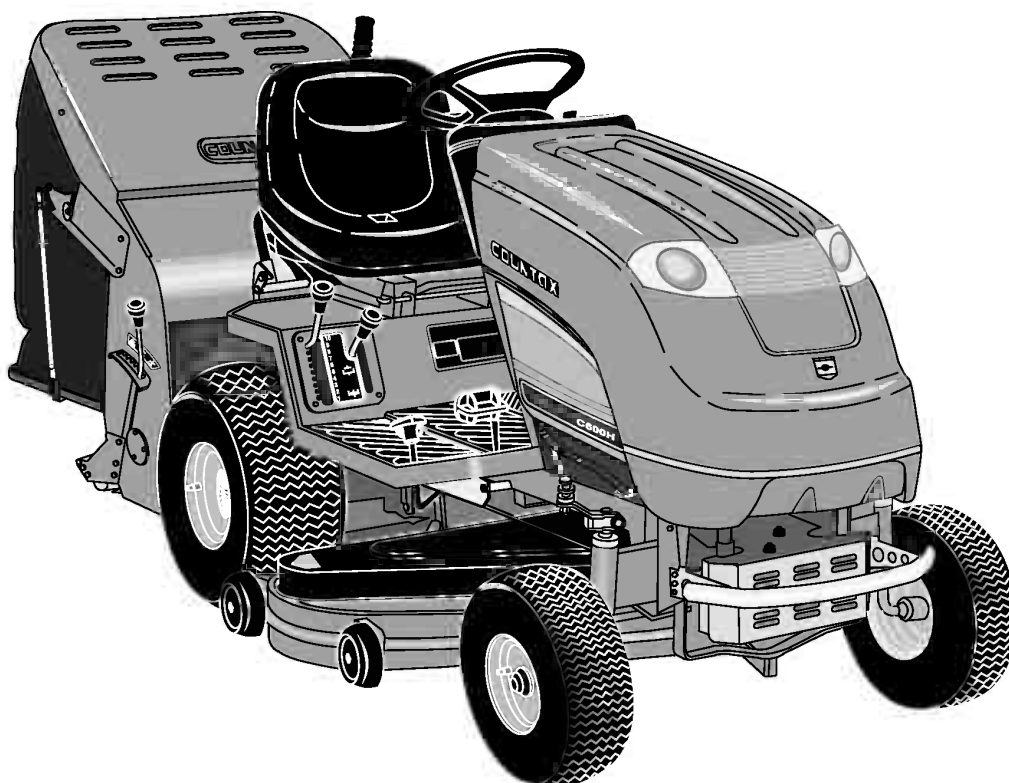


COUNTAX

Britain's Best Selling Range of Garden Tractors

C-SERIES TRACTOR Mk3 2006 SERVICE DRAWINGS AND PARTS LIST



Countax Limited

Countax House
Haseley Trading Estate
Great Haseley
Oxford OX44 7PF

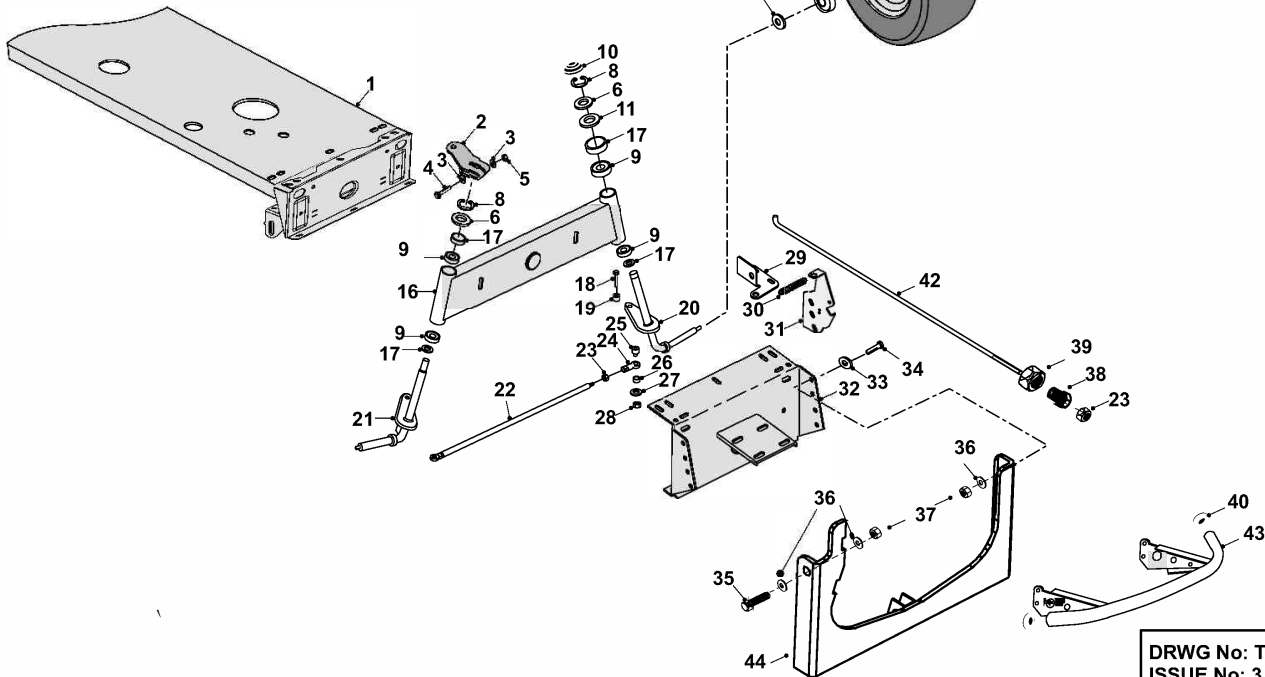
Telephone: +44 (0) 1844 278800
Facsimile: +44 (0) 1844 278792
EMail: email@countax.com
Web Site: <http://www.countax.com>

***Manufacturers of Britain's
No.1 Range of Garden Tractors
and Ride-on Mowers***

COUNTAX
C-SERIES TRACTOR MK3
SERVICE DRAWINGS
AND
PARTS LIST
INDEX

1. FRONT AXLE ASSEMBLY
2. BONNET ASSEMBLY
3. CONSUL ASSEMBLY
4. REAR BODY ASSEMBLY
5. PTO & TRANSMISSION ASSEMBLY
6. HYDROSTATIC TRANSAXLE ASSEMBLY
7. MAIN WIRING LOOM
8. H.E. WIRING LOOM
9. DIAL HEIGHT WIRING LOOM
10. DECALS

C-SERIES TRACTOR MK3 **FRONT AXLE ASSY**



DRWG No: T2010303
ISSUE No: 3

SECTION 1

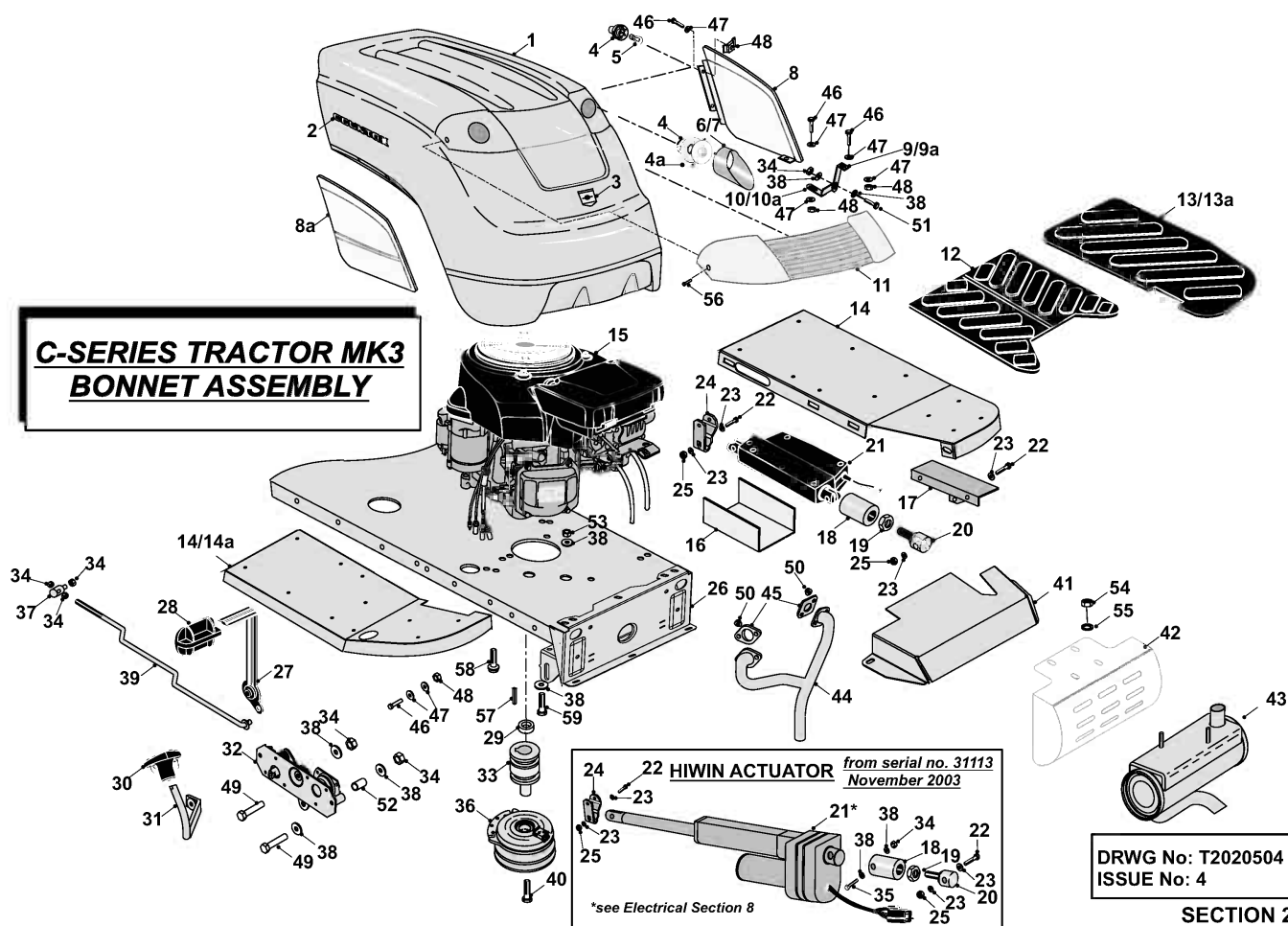
C-SERIES MK3 TRACTOR
FRONT AXLE ASSEMBLY
PARTS LIST

	PART DESCRIPTION	PART NUMBER
1.	Chassis 04	327023302
2.	Steering Arm	32702501
3.	Washer M10	088002400
4.	Coach Bolt M10 x 60mm zinc clear	018005000
5.	Nyloc Nut M10	04886100
6.	Washer 19mm x 2mm	088000500
7.	Nyloc Nut M12	049381100
8.	19mm External Circlip	07921200
9.	Front Wheel Bearing	10802200
10.	Hub Cap (Moulded)	14811800
11.	Hub Cap Washer 46mm x 13mm I.D.	30128100
12.	M12 Washer	088001200
13.	Washer 19mm x 2mm	088000500
14.	Front Wheel Rim & Hub	32701100
15.	Front Tyre 15X6 Wheel Valve (Not Illustrated - Location Outer Wheel Hub)	19802800 14889200
16.	C-Series Front Axle Beam	327014700
17.	Washer 32mm x 19.5 I.D.	30127900
18.	M10 x 90 Hex Head Bolt	018002500
19.	Rose Joint Boss	31302400
20.	Stub Axle L/H	327008900
21.	Stub Axle R/H	327009000
22.	Track Rod M10	31318300
23.	Locknut M10	04872100
24.	Rod End 10mm	10872600
25.	Rose Joint Shoulder Boss Long	31337100
26.	Spacer 7mm x 10mm I.D.	31302900
27.	Washer 10.81 i.d. x 20.70 d x 2mm Thick	088002400
28.	M10 Nyloc Nut	04886100
29.	Bonnet Hinge Bracket L/H Bonnet Hinge Bracket R/H	301136300 301136400
30.	Bonnet Spring	25805200
31.	Bonnet Stop L/H Bonnet Stop R/H	301136500 301136600
32.	Chassis Front	27115500
33.	M8 Washer	08819501
34.	Bolt M8 x 25 mm Roofing Bolt	01902300
35.	5/16" x 1. ¼" Bolt	01820600
36.	M8 x 21 x 1.6 Washer	088003700
37.	5/16" Nut	04827500

C-SERIES MK3 TRACTOR
FRONT AXLE ASSEMBLY
PARTS LIST

	PART DESCRIPTION	PART NUMBER
38.	Deck Tension Adjuster	189507400
39.	M16 Lock Nut	048002000
40.	Bull Bar Plastic End Caps	148014400
41.	Washer 10.81 i.d. x 20.70 d x 2mm Thk	088002400
42.	Deck Tension Rod	31805600
43.	Stainless Steel Bull Bar	327028000
44.	Deck Tension Cradle	327365700

C-SERIES TRACTOR MK3 BONNET ASSEMBLY



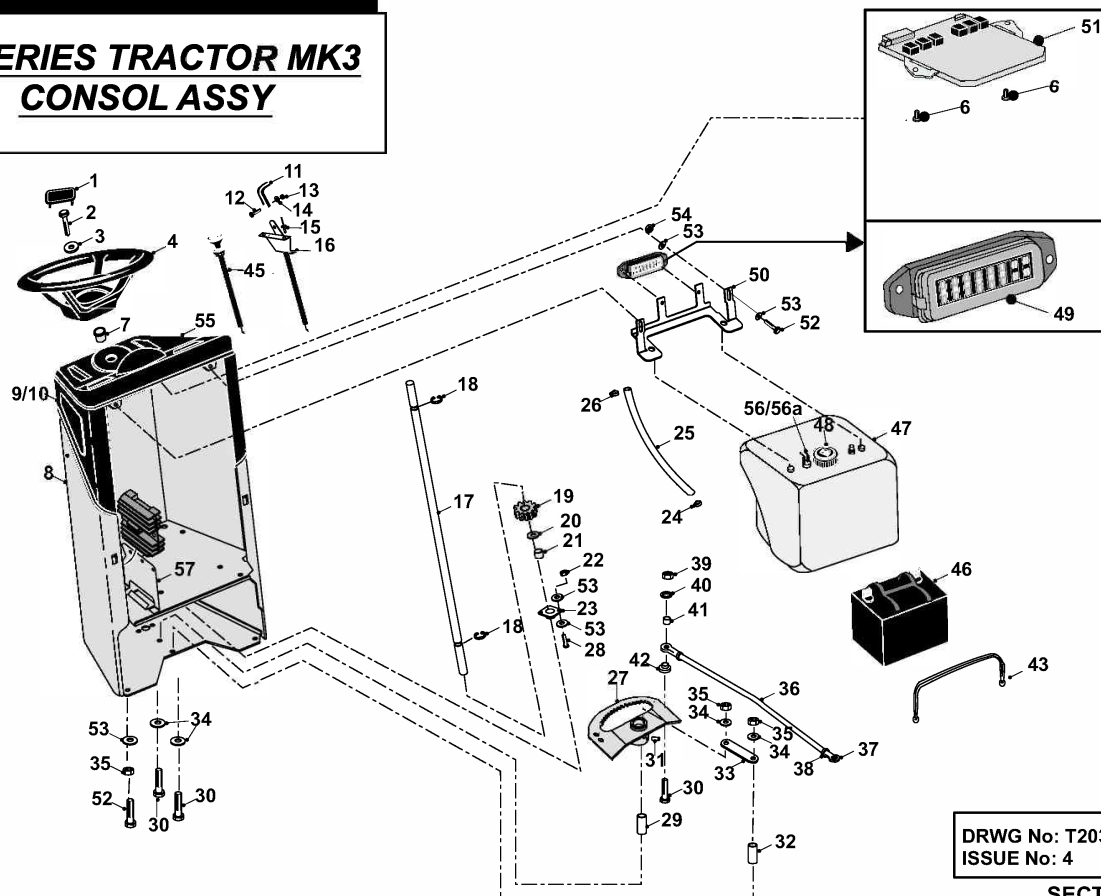
C-SERIES MK3 TRACTOR
BONNET ASSEMBLY
PARTS LIST

	PART DESCRIPTION	PART NUMBER
1.	Bonnet C300, C400 & C600 Bonnet C800	405007300 405007400
2.	Pegged Badge Countax	35932500
3.	Countax 'C' Series Badge	35929300
4.	Headlight Unit – Hella	448008400
4a	Fir Tree Fastener	148012300
5.	Headlight Bulb 21w - Hella	448008500
6.	Headlight Can L/H	148013500
7.	Headlight Can R/H	148013600
8	Engine Side Panel L/H C-Series 2002	148014100
8a.	Engine Side Panel R/H C-Series 2002	148014200
9	Front Side Panel Top Fixing Bracket L/H	301137600
9a.	Front Side Panel Top Fixing Bracket R/H	301137700
10	Side Panel Base Bracket L/H	301137200
10a	Side Panel Base Bracket R/H	301137300
11.	Bonnet Headlight Lens 2002	148013400
12.	Centre Runner Mat	14800800
13	Running Board Mat L/H (Uplifted Running Board)	148010900
13a	Running Board Mat R/H (Uplifted Running Board)	148010800
14	Running Board L/H	327177800
14a	Running Board R/H	327177700
15.	Honda Engine GXV 620 (18 & 20HP) Honda Engine GCV 520/530 (13, 14 & 16HP)	Not Available from Countax
16.	H.E.Actuator Cover 2002	307188100
17.	H.E Mounting Bracket 2003	327363500
18.	LA12 Linak Actuator Adjuster Boss Universal Actuator Attachment Body – Aug 03	189498600 183028100
19.	Nut M12	049381200
20.	Deck Lift Actuator Adjustment Screw	187184900
21.	LA12 Actuator Actuator 1200N Hiwin	448008601 448015700
22.	M10 X 55mm Hx Head Bolt	018002400
23.	Washer 10.81 i.d. x 20.70d x 2mmThk	088002400
24.	Deck Lift Actuator Arm Universal Deck Lift Arm – Hiwin Actuator	301055001 307192400
25.	M10 Nut Nyloc	04886100
26.	Chassis 06	327023302
27.	Forward Pedal Rod	327361200
28.	Forward Pedal Rubber	148013700
29.	Engine Pulley Spacer	31854000
30.	Reverse Pedal Rubber	148013800
31.	Cassette Reverse Pedal	327361300
32.	Transmission Cassette 2002 C-Series	409427400
33.	Magstop Engine Pulley	31330502

C- SERIES MK3 TRACTOR
BONNET ASSEMBLY
PARTS LIST

	PART DESCRIPTION	PART NUMBER
34.	Full Nut Hex M8 Z/P	04822300
35.	M8 x 35mm Bolt	01935700
36.	Warner Electric Mag Stop Clutch	44936100
37.	Forward Reverse Trunnion	183017300
38.	M8 Washer	08819501
39.	Cassette Forward Reverse Rod	327361400
40.	Bolt 7/16" UNF x 4.5" UNF	01831000
41.	Heat Shield Zintec 13, 14 & 16HP Heat Shield Zintec 18 & 20HP	301137900 301138000
42.	Exhaust Box Cover	307199700
43.	2003 Exhaust R/H Outlet	328956300
44.	Exhaust Pipe 13, 14 & 16HP Exhaust Pipe 18 & 20HP	327026300 327026400
45.	Exhaust Gasket	Supplied by Honda
46.	Set Screw M6 x 20mm pozi	028000200
47.	Washer 9/16"	08827800
48.	M6 Captive Nut	048000900
49.	Bolt M8 x 45mm (Vac)	02941000
50.	Exhaust Flanged Fixing Nuts	Supplied by Honda
51.	Bolt M8	01852000
52.	Transaxle Deflector Spacer	31322200
53.	M8 Nyloc Nut	04850600
54.	M8 Philadas Self Locking Nut Zinc Plated	048001700
55.	Washer M8 x 25 x 3 unplated	089418600
56.	M4 x 16mm Socket Head Countersunk Screw	018005100
57.	Engine Key 1/4" Square x 1.1/4"	09853400
58.	Engine Bolt 3/8" x 1.1/4" BZP	01848700
59.	Bolt M8 x 20mm	02825900

C-SERIES TRACTOR MK3 **CONSOL ASSY**



DRWG No: T2030504
ISSUE No: 4

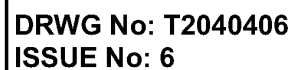
SECTION 3

C-SERIES MK3 TRACTOR
CONSOL ASSEMBLY
PARTS LIST

	PART DESCRIPTION	PART NUMBER
1.	Steering Wheel Cap	14938700
2.	Bolt M8 x 25mm	02826000
3.	M8 Washer	08819501
4.	Steering Wheel	14928200
5.	Washer No.10	088004400
6.	Screw No.10 x ½" Flat Ended Pozidrive Self Tapper	028663300
7.	Column Upper Bush	14801800
8.	C-Series Consol	327028401
9.	Rubber Knee Pad R/H	14859200
10.	Rubber Knee Pad L/H	14859300
11.	Control Knob	14810400
12.	Set Screw M4 x 12mm pozi pan zinc plated	02826300
13.	Nut M4 Nyloc T	04826400
14.	M4 Form A Washer BZP	08826200
15.	Rivet 3.2mm x 10mm	12863100
16.	Throttle Control 16 HP Honda Single Lever	528005400
17.	Steering Column – C Series	31328400
18.	Circlip 5/8"	07823800
19.	Steering Gear	213112100
20.	Washer 5/8" T3 LP	08822700
21.	Steering Rod Spacer	18401500
22.	M8 Nyloc Nut	04850600
23.	Column Lower Bearing	10801700
24.	Spring Type Hose Clip	11867100
25.	Fuel Feed Pipe 40cm	14803200
26.	Jubilee Clip (Fuel Tank Hose)	11856900
27.	Steering Quadrant 17t	327015800
28.	Bolt M8 x 20mm	02825900
29.	Steering Quadrant Pivot	31337400
30.	M10 x 65mm Hex Head Bolt BZP	018005300
31.	Grease Nipple	11808600
32.	Steering Support Boss	31337500
33.	Steering Link Plate	27102400
34.	Washer 10.81 i.d. x 20.70 d x 2mm Thk	088002400
35.	M10 Nyloc Nut	04886100
36.	Tractor Steering Link Rod	313007800
37.	Rod End 10mm	10872600
38.	M10 Locknut	04872100
39.	M10 Nyloc Nut	04886100
40.	Washer 10.81 i.d. x 20.70 d x 2mm Thk	088002400

C-SERIES MK3 TRACTOR
CONSUL ASSEMBLY

	PART DESCRIPTION	PART NUMBER
41.	Spacer 7mm x 10mm i.d.	31302900
42.	Rose Joint Shoulder Boss - Short	31339600
43.	Battery Strap	149495900
44.	Consul Top Insert Upper Left (not illustrated)	148012900
	Consul Top Insert Upper Right (not illustrated)	148013000
	Consul Top Insert Lower Left (not illustrated)	148013100
	Consul Top Insert Lower Right (not illustrated)	148013200
45.	Choke Cable	RCL290058-00
46.	Battery 12v 3AH (Gel)	458141200
47.	Fuel Tank (with hole for gauge)	148015400
48.	Fuel Tank Cap	52803100
49.	2002 Fuse Box Holder	301139400
50.	Fuel Tank & Fuse Holder Bracket	307187400
51.	Main Control Printed Circuit Board	448009400
	Dial Height PCB – Hiwin Actuator	449560700
52.	Bolt M8 x 20mm	02825900
53.	M8 Washer	08819501
54.	M8 Nyloc Nut	04850600
55.	Dashboard Consul Top	148012800
56.	Fuel Level Sensor	448010600
56a	Fuel Level Sensor Seal Kit	149510900
57.	Relay Mounting Plate	301069200



SECTION 4

C-SERIES MK3 TRACTOR
REAR BODY ASSEMBLY
PARTS LIST

	PART DESCRIPTION	PART NUMBER
1.	Seat	14947200
2.	Seat Plate Adjuster R/H	30117900
3.	Seat Plate Adjuster L/H	30118000
4.	Rivet 5mm x 10mm	12824400
5.	Compression Spring Universal	25831100
6.	Seat Handle	30203100
7.	Starlock Washer ¼"	08868700
8.	Adjustable Seat Channel R/H	30117700
	Adjustable Seat Channel L/H	30117800
9.	Tool Tray	14848500
10.	PTO Engage Bridge	32722500
11.	Spring Handbrake Block Torsion 1.75 Dia	258000600
12.	Bolt M8 x 20mm	02825900
13.	Handbrake Handle	321124300
14.	Handbrake Link Rod	32948500
15.	Handbrake Chassis Joggle Plate	301137800
16.	Handbrake Chassis Joggle Plate Boss	183027400
17.	Bearing	10811600
18.	Washer 10.81i.d. 20.70 o.d. x 2mm Thk	088002400
18a	¼" x 5/8" Shakeproof Washer	08824200
19.	M5 Nyloc Nut	04885900
20.	Split Pin 1" x 1/8"	06823300
21.	Bolt M8 x 20mm	02825900
22.	M8 x40 x3mm Heavy Gauge Washer	08925400
23.	Deck Lift Pin	31336800
24.	Spacer (Seat Spring)	31330800
25.	Spring Retaining Washer (seat)	27835400
26.	Adjustable Seat Spring	25845600
27.	M10 x 40 Socket Cap Screw Zinc Plated	028003400
28.	Handbrake Cup Holder	148013900
28a	Handbrake Lever Housing	148014000
29.	C-Series Handbrake Handle Knob	187185300
30.	Handbrake Handle Badge 2002	359505100
31.	Cross Shaft Deck Lift	327181500
32.	M5 Washer	088002800
33.	Handbrake Nylon Bush	149498000
34.	RH Sweeper Lift Cross Bar Conn Pl	327171600
35.	LH Sweeper Lift Cross Bar Conn Pl	327171700
36.	Jubilee Clip	11856900
37.	PTO 'Danger' Decal	35809500
38.	Decal PTO Flap	35891200
39.	Bolt M8 x 45mm (Vac)	02941000

APRIL 2005

SECTION 4

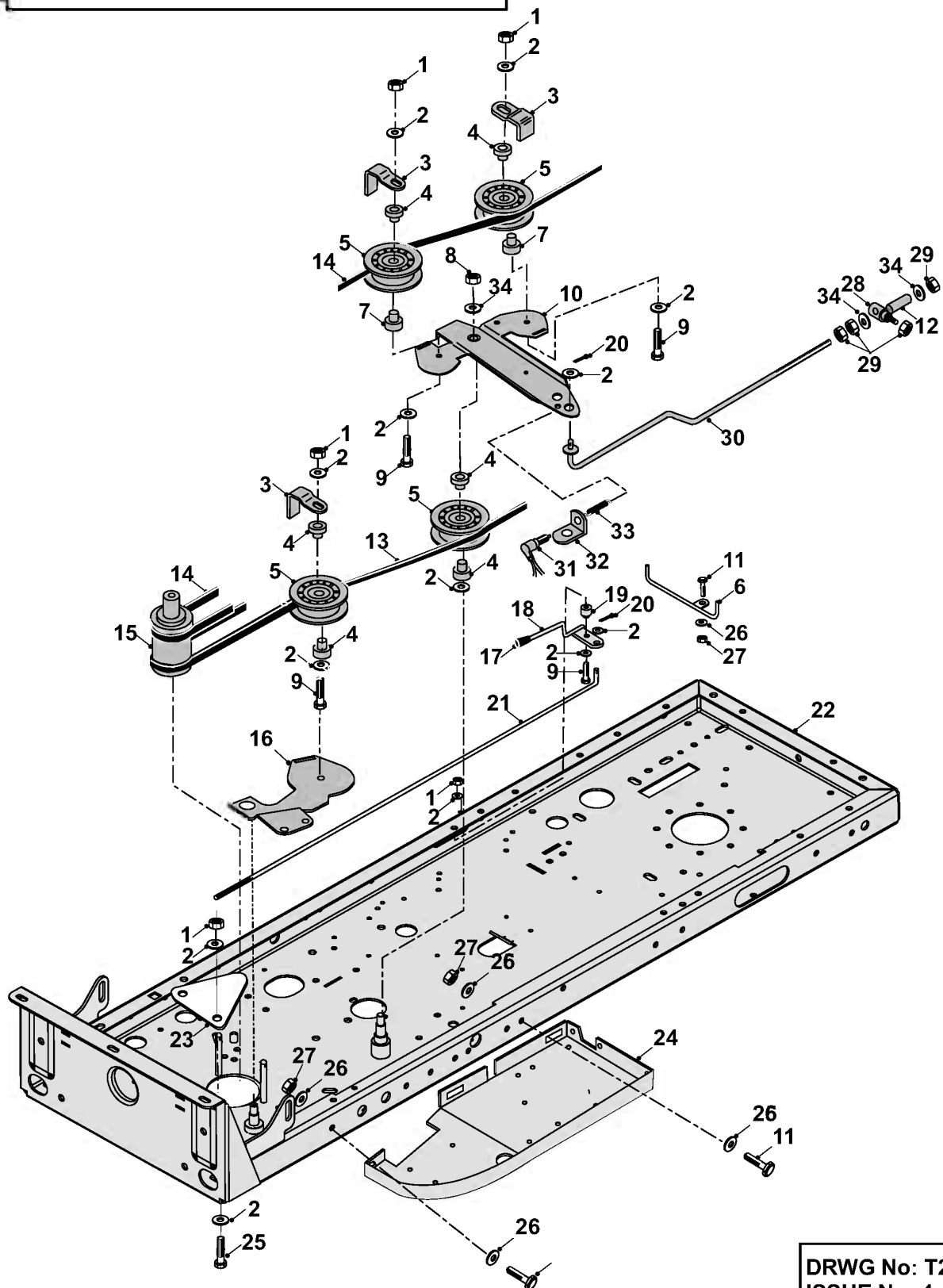
C-SERIES MK3 TRACTOR
REAR BODY ASSEMBLY
PARTS LIST

	PART DESCRIPTION	PART NUMBER
40.	M8 Washer	08819501
41.	Spacer 9 x 8.3mm I.D.	31302700
42.	HE Sweeper Lift Arm R/H	32720300
43.	HE Sweeper Lift Arm L/H	32721100
44.	R-Clip 2mm	06849100
45.	M8 Nyloc Nut	04920100
46.	Rear Body Panel	327028501
47.	Decal - Deck Size 107cm/42"	35931700
48.	HE Sweeper Lift Plate	30133500
49.	Rear Seat Box	32730801
50.	Seat Channel (bolt on)	30144900
51.	Lever Knob	14804800
52.	PTO Engage Lever	32708700
53.	M8 x 30mm Hx Hd Bolt	018005700
54.	PTO Level Plate – H.E. only	30134500
55.	Nut M8	04920100
56.	PTO Plate Spacer.	31305100
57.	5/8" Open Grommet	52849200
58.	Spring	25831100
59.	Washer 40mm o.d x 8.3mm i.d	08104400
60.	M6 Socket Screw Cap	148014300
61.	Stainless Steel Wear Strip	301140300
63.	K46 Oil Tank	148018600
64.	Reservoir Hose	148014800
65.	Sweeper Belt Guide Pin	32723800
66.	Chassis 04	327023302
67.	PTO Flap Shell (H.E.)	149496300
68.	Seat Pivot Rod	31301800
69.	PTO Flap Hinge	302005200
70.	Decal IBS Deck	35931400
71.	Vent Valve Breather	Tuff Torq Pt.No 1948592452
72.	E-Clip M12 Plated	078000800
73.	Bearing Housing 17mm	27106600
74.	Screw M5 x 16mm	019479500
75.	Screw M6 x 20mm	018000300
76.	Washer M6	08827800
77.	Nut Nyloc M6	04920500
78.	Rose Joint M10 Rod	10872600
79.	M10 x 30 Bolt	018003000
80.	M10 Washer	088002400
81.	M10 Nut	04886100

APRIL 2005

SECTION 4

NEW C-SERIES MK3 **PTO & TRANSMISSION ASSY**

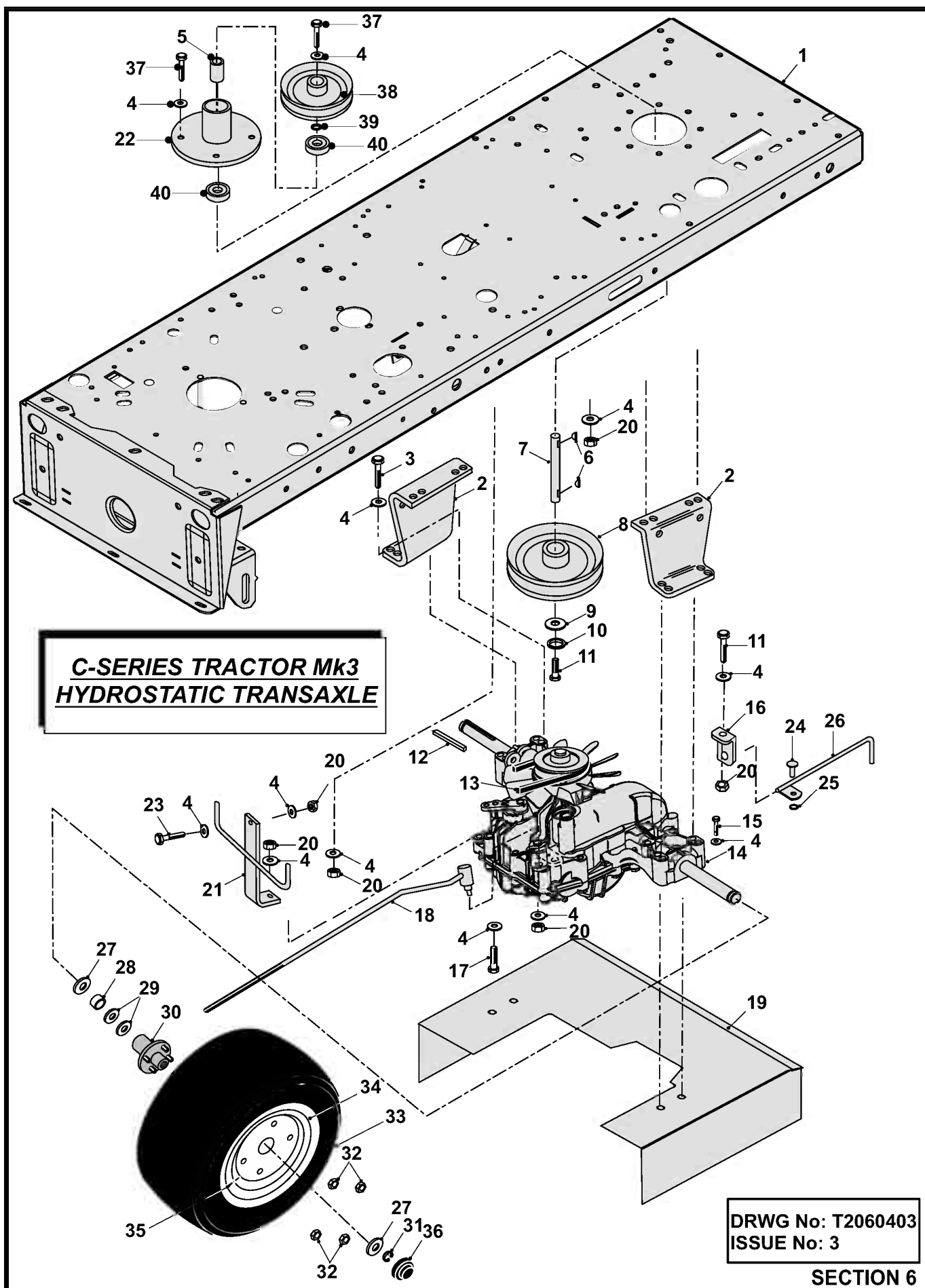


DRWG No: T2050504
 ISSUE No: 4

SECTION 5

C-SERIES MK3 TRACTOR
PTO & TRANSMISSION ASSEMBLY
PARTS LIST

	PART DESCRIPTION	PART NUMBER
1.	Nut M8	04920100
2.	M8 Washer	08819501
3.	Belt Retaining Bracket	27105800
4.	Spacer Jockey Wheel	18831600
5.	PTO Jockey Pulley Plastic	20811500
6.	PTO Rear Belt Guide	328955500
7.	Sweeper Jockey Cap	31351100
8.	M10 Nyloc Nut	04886100
9.	Bolt M8 x 50mm	018001800
10.	Jockey Pulley Plate	328955100
11.	Bolt M8 x 20mm	02825900
12.	MK3 Park Brake Engage Rod Sleeve	174008900
13.	PTO Drive Belt Dayco A82	2281110A
14.	A79 Super 11 Belt Transmission Drive K46	229503400
15.	Magstop Engine Pulley	31330502
16.	PTO Jockey Plate	307187000
17.	Plastic Lever Cap	14946200
18.	Deck Tension Lever - H.E - D/H Deck Tension Lever – Hiwin Actuator	327361800 328956700
19.	Pivot (Deck Overlock)	18833700
20.	Split Pin 1/8" x 1"	06823300
21.	Deck Tension Rod	31805601
22.	Chassis 04	327023302
23.	Clutch Retaining Bracket	302007000
24.	Running Board R/H Running Board L/H (Not Illustrated)	327177700 327177800
25.	Bolt M8 x 20mm	02825900
26.	M8 Washer	08819501
27.	Nut Nyloc M8	04920100
28.	Park Brake Engage Rod Trunnion	187186100
29.	Nut M10 Nyloc	04886100
30.	Hand Brake Engage / Park Brake Rod	318952401
31.	Pull Safety Switch	44813400
32.	Brake Switch Mounting Plate	302005400
33.	Brake Return Spring	25812201
34.	Washer 10.8 id x 20.7 od x 2mm Thk	088002400



**C-SERIES MK3 TRACTOR
TRANSAXLE ASSEMBLY
PARTS LIST**

	PART DESCRIPTION	PART NUMBER
1.	Chassis 04	327023302
2.	Transaxle Bracket	307025900
3.	M8 x 75mm Hex Bolt Zinc Plated & Clear PAS	018005600
4.	M8 Washer	08819501
5.	PTO End Spacer	31306200
6.	Key	09823900
7.	PTO Shaft	31306000
8.	Pulley 7"	20870700
9.	Washer M8 x 20 x 3 unplated	089418600
10.	M8 Star Washer (Vac)	088000800
11.	Bolt M8 x 25mm	02826000
12.	Key 2" x 3/16" (Rear Wheel)	09830700
13.	A79 Super 11 Belt – K46	229503400
14.	K46 Hydrostatic Transaxle	478000300
15.	Bolt M8 x 65mm	028662700
16.	99 C-Series Dump Rod Bracket	303071400
17.	Bolt M8 x 50mm	018001800
18.	Handbrake Transmission Rod	327360900
19.	K46 Transaxle Deflector	30307101
20.	Nut M8	04920100
21.	Transaxle Support Bracket	313009400
22.	PTO Bearing Housing	32700300
23.	Bolt M8 x 25mm	02826000
24.	Rivet 4.8 x 16mm Alloy Pop	12860100
25.	Starlock Washer ¼"	08868700
26.	Dump Valve Lever	321123301
27.	K46 Transaxle Thrust Washer	307191800
28.	K46 Transaxle Wheel Spacer	189498700
29.	Washer 19mm (Rider)	08829900
30.	Wheel Hub for 20" Wheel c/w studs & nuts	198002000
31.	19mm External Circlip	07921200
32.	C- Series Wheel Nut	048000901
33.	20" Rear Tyre	198001200
34.	Rear Wheel Rim 20"	198001100
	Grease Nipple	11898800
	`O' Ring	24898700
	M8 Star Washer	088000800

**C-SERIES MK3 TRACTOR
TRANSAXLE ASSEMBLY
PARTS LIST**

	PART DESCRIPTION	PART NUMBER
35.	Wheel Valve	14889200
36.	Hub Cap (Moulded)	14811800
37.	Bolt M8 x 20mm	02825900
38.	PTO Pulley 5"	208000600
39.	PTO End Spacer	31306200
40.	Bearing (PTO Housing)	10811600
41.	Bolt M10 x 30mm	018002100
42.	Tow Bracket	29200101
43.	Nut M10	04872100
44.	Washer 10.8 i.d x 20.7 o.d x 2 mm	088002400

C-SERIES MK3 TRACTOR
MAIN WIRING LOOM PARTS LIST

	PART DESCRIPTION	PART NUMBER
1	For the main C Series PCB, please see reference table on page 24	
2	2002 Fuse Box Holder	301139400
3	Rocker Switch (on / off / on)	448008900
4	Position sensor Switch	449666600
5	Headlight Loom	448010400
6	Tie Wrap Mount (not illustrated)	52816800
7	Bulb Hella 21W	448008500
8	Electric Clutch Magstop	44936100
9	Clutch Loom Magstop	44946800
10	Lead Battery to Solenoid (C300H, C300M, C400H & C600H)	44812602
	18 & 20 HP Lead Battery to Solenoid (C800H)	448010000
11	Earth Lead (short)	449662800
11a	Earth Lead (Long)	449662900
12	Start Lead (Briggs & Stratton Engines only)	44812500
13	Tie Wrap Adhesive (not illustrated)	52816700
14	Starter Solenoid C300M only	44814801
15	Battery 12V (Dry Charged)	458141300
16	Ignition Key	528006900
17	Seat Switch	44949500
18	Countax / B&S Engine Loom Block Connector - C-Series M (not illustrated)	448015600
19	10A Amp Fuse (not illustrated)	44889500
20	Fuse Spade 20A (not illustrated)	44835000
21	Ignition Switch	448010700
22	Loom – Honda Twin 2003	448009100
23	Tie Wrap (not illustrated)	52825400
24	Battery Charger	449562800
25	Battery Charger Decal	359509300
26	Battery Charger Instructions (not illustrated)	36919400
27	WW/CTAX Ignition Switch Sub Loom 04	449563200
28	Fuel Level Sender	449665300
28a	16mm Sealing Washer	149545700
	16mm Shock Proof Washer	089421000
	Fuel Sensor Nut	149548000

[illegible]

BATTERY
CHARGER

E150

DRWG No: T2200302
ISSUE No: 2

SECTION 8

C-SERIES TRACTOR MK3
H.E. LOOM
PARTS LIST

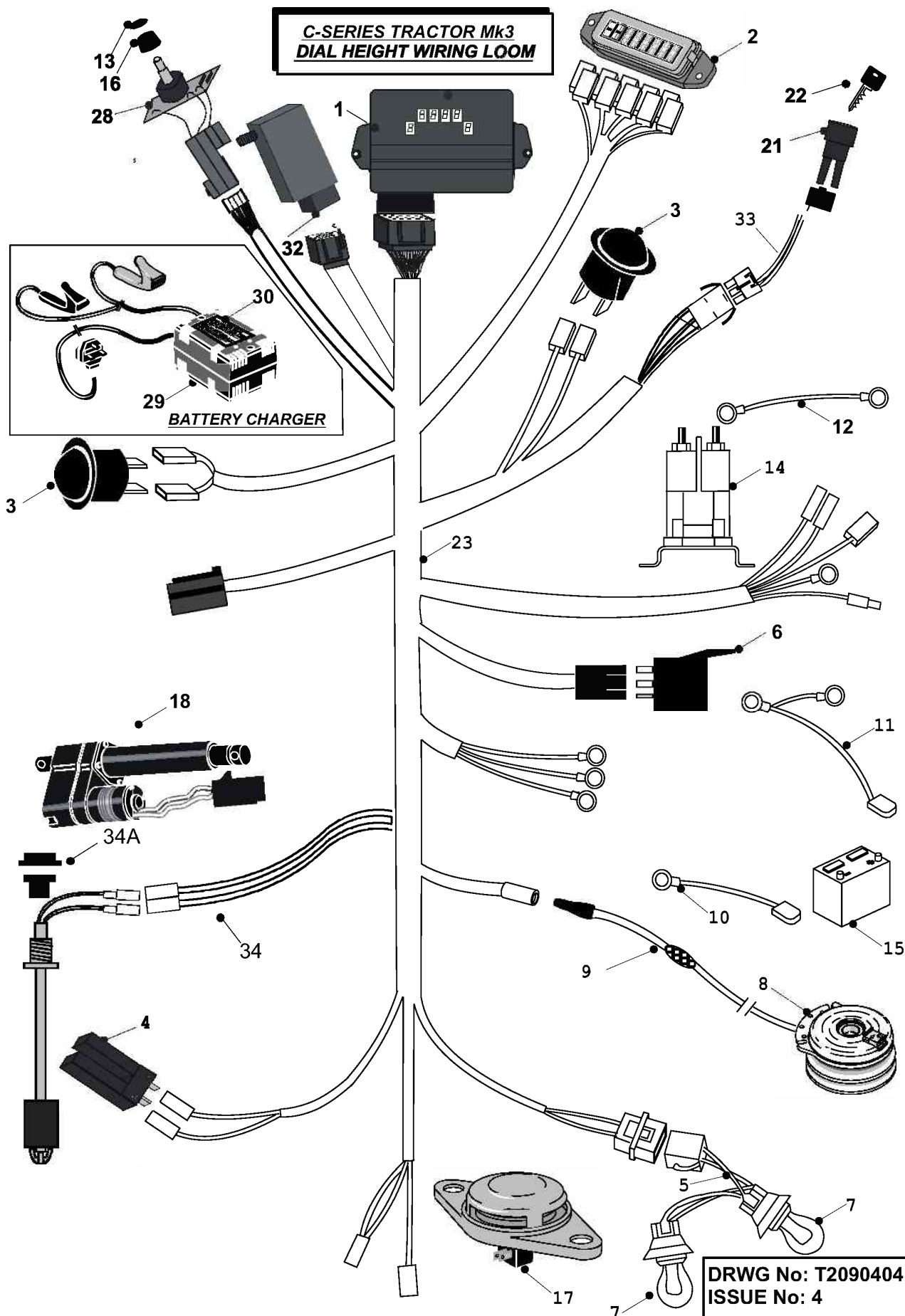
	PART DESCRIPTION	PART NUMBER
1	For the main C Series PCB, please see reference table on the next page	
2	Fuse Box Holder 2002 C-Series	301139400
3	Switch Momentary on 2003 (R13208FAAA)	448008700
4	Position Sensor Switch	449666600
5	2003 C-Series Headlight Loom	448010400
6	Electric Relay 12v / 30amp Omron	449559100
7	Bulb C-Series 2002 PY21W	448008500
8	Warner Electric Clutch 20/50	44815200
9	Clutch Loom Magstop Modular	44946800
10	18 & 20hp Battery Lead	448010000
11	Earth Lead 2003	44812402
12	Start Lead 3923	44812500
13	HE PCB Cover 2003	307187800
14	Starter Solenoid	44814801
15	Battery – Dry Charged 18/50	458141300
16	Seat Switch Milsco Seat 97)	44949500
17	Actuator c/w Potentiometer	448007700
18	10AMP Fuse(not illustrated)	44889500
19	Fuse Spade 20AMP(not illustrated)	44835000
20	Ignition Switch	448010700
21	Ignition Key	528006900
22	HE Loom + Fuel Sender 2003	448015300
	C-Series Loom + Fuel Sender 2003	448015100
23	Tie Wrap (Not Illustrated)	52825400
24	Tie Wrap Mount (Not Illustrated)	52816800
25	Tie Wrap Self Adhesive (Not Illustrated)	52816700
26	HE PCB For LA10 Actuators & Net 2003	448009200
27	Deck Actuator (upto serial no: 00718)	448002800
	Actuator Warner LA10 (after serial no:00718)	448005800
28	Fuse 30AMP Spade D18/50,Diesel Fuse Box – not illustrated	449559200
29	Switch on / off / on 2003 (R1311DAAA)	448008900
30	A20/50 PGC Net Emptying Loom	448004300
30a	Rear Socket For Net Emptying Loom –Trac	448005600
31	2002 Lift Kit Collet Knob	148010600
32	Collet Knob Cap – Rotary HE PCB 2001	148011000
33	Battery Charger	449563000
34	Battery Charger Decal	359509600
35	Battery Charger Instructions (not Illustrated)	36919400
36	Dial height Switch	449561501
37	Deck Control PCB	448017102
38	Fuel Level Sender	449665300
38a	16mm Sealing Washer	149545700
	16mm Shock Proof Washer	089421000
	Fuel Sensor Nut	149548000

Printed Circuit Boards (P.C.Board)

(The serial number is the first 5 digits from your barcode on your machine)

(* = PCB Board Only – for switch order part number: 449561501)

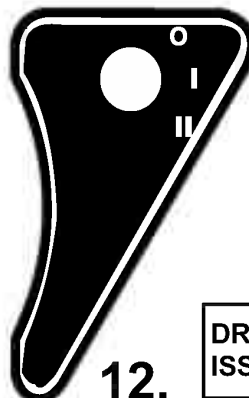
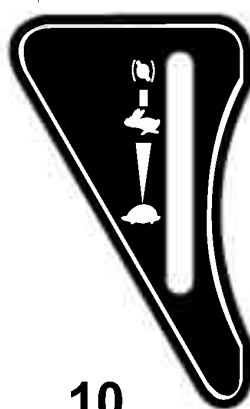
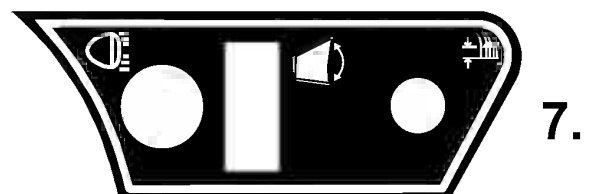
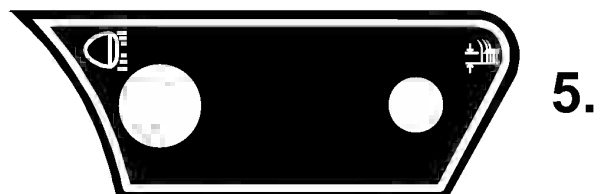
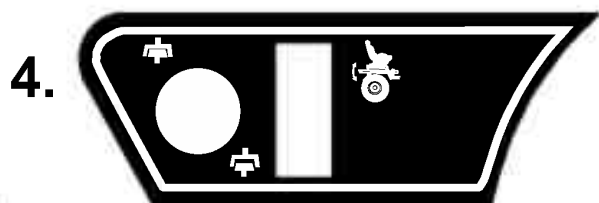
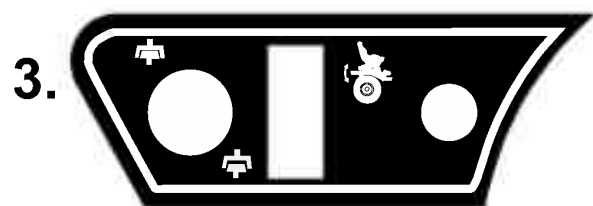
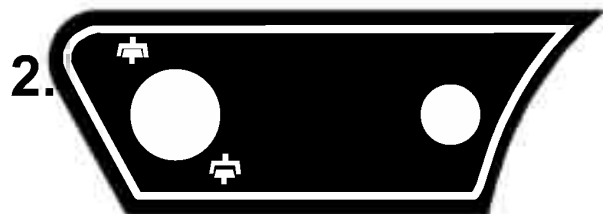
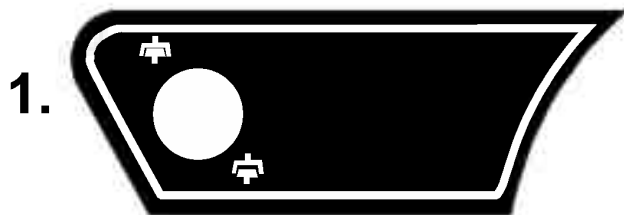
	Model	Serial No.	Engine	Main PCB	HE PCB	Dial Height PCB
Countax C Series	C Series non HE	20902- 40915 ('02-'04)	Honda	448009402	N/A	N/A
	C Series non HE	40916- 90615 ('04-'09)	Honda	449878400	N/A	N/A
	C Series HE	20912- 40915 ('02-'04)	Honda	448009402	448009200	449560602
	C Series HE	40916- 90615 ('04-'09)	Honda	449878400	448017200	448017104 *



C-SERIES MK3 TRACTOR
DIAL HEIGHT LOOM
PARTS LIST

	PART DESCRIPTION	PART NUMBER
1	Main Control PCB	448017004
2	Fusebox Holder 2002	301139400
3	Rocker Switch (on / off / on)	448008900
4	Position Sensor Switch	449666600
5	Headlight Loom	448010400
6	Electric Relay 12v / 30amp	449559100
7	Bulb Hella 21W	448008500
8	Electric Magstop Clutch	44936100
9	Clutch Loom Magstop	44946800
10	Lead Battery to Solenoid (C300H, C300M, C400H & C600H) 18 & 20 HP Battery Lead to Solenoid (C800H)	44812602 448010000
11	Earth Lead	44812402
12	Start Lead (Briggs & Stratton Engines only)	44812500
13	Collet Knob Cap – Rotary HE PCB 2001	148011000
14	Starter Solenoid C300M only	44814801
15	Battery Dry Charge	458141300
16	2002 Lift Kit Collet Knob	148010600
17	Seat Switch	44949500
18	Deck Actuator (upto serial no: 00718) Actuator Warner LA10 (after serial no:00718)	448002800 448005800
19	10A Fuse (not illustrated)	44889500
20	Fuse Spade 20A (not illustrated)	44835000
21	Ignition Switch	448010700
22	Ignition Key	528006900
23	Loom & Fuel Sender	448015100
24	Tie Wrap (Not Illustrated)	52825400
25	Tie Wrap Mount (Not Illustrated)	52816800
26	Tie Wrap Self Adhesive (Not Illustrated)	52816700
27	Dial Height Loom & Fuel Sender (not illustrated)	448015200
28	Dial height Switch	449561501
29	Battery Charger	449563000 use 449562800
30	Battery Charger Decal	359509300
31	Battery Charger Instructions (not illustrated)	36919400
32	Deck Control PCB	448017102
33	WW/CTAX Ignition Switch Sub Loom 04	449563200
34	Fuel Level Sender	449665300
34a	16mm Sealing Washer 16mm Shock Proof Washer Fuel Sensor Nut	149545700 089421000 149548000

C-SERIES TRACTOR MK3
DECALS (Page 1.)



DRWG No: T2160301(P1)
 ISSUE No: 1

SECTION 10

13.



C-SERIES TRACTOR MK3 DECALS (Page 2)

17.



14.



15.

97 CM / 38"

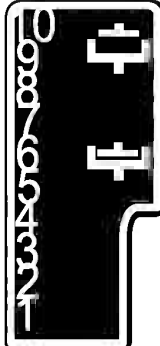
16.



18.



19.



(MANUAL)

20.



(H.E.)

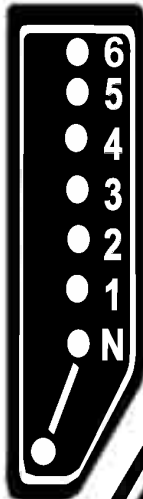
21.



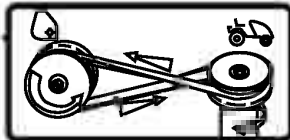
25.

COUNTAX

22.



23.



26.



28.



24.



27.



29.

C600H

POWERED BY HONDA

L/H

POWERED BY HONDA

C600H

R/H

30.

C800H

Dial Height Control

POWERED by Honda Engines

L/H

POWERED by Honda Engines

Dial Height Control

C800H

R/H

DRWG No: T2160301(P2)
ISSUE No: 1

SECTION 10

C-SERIES TRACTOR MK3**DECALS
PARTS LIST**

	PART DESCRIPTION	PART NUMBER
1.	Deck Engage Dash Decal 2003 C-Series	358026400
2.	Deck Engage / Choke Decal 2003	358028800
3.	Clutch / Sweeper / Choke (Rectangular) Decal 2003	358031000
4.	Clutch / Sweeper (Rectangular) Decal 2003	358031100
5.	Deck / HLight Consol Decal 2003	358031400
6.	Headlight – Dash 2003 C-Series	358026200
7.	Deck / Net / HLight Consol Dcl 2003	358031500
8.	Decal Dash Display 2003 (Version 1.)	358027100 use 358032900
9.	Decal Dash Display 2003 (Version 2.)	358032900
10.	Choke / Throttle Dash Decal 2003	358026500
11.	Throttle Dash Decal 2003	358026900
12.	Dash Ignition Decal 2003 C-Series	358026600
13.	Rear Body PTO Engage Decal 2003	35882701
14.	C-Series Handbrake Handle Badge	359505100
15.	Decal – 92cm Deck Size	35931500
	Decal – 97cm Deck Size	35931600
	Decal – 107cm Deck Size	35931700
	Decal – 122cm Deck Size	35931800
16.	Sweeper Height Decal 2003	35937601
17.	IBS Decal 2003	35931301
18.	Mulcher Decal 2003	35945901
19.	Deck Height PTO Disengage Manual Decal 2003	358034200
20.	DK Height / PTO Engage Rear Body Decal 03	358005602
21.	Instructions Decal 2003	358027200
22.	6 Speed Gear Select Decal	35949300
23.	Sweeper Belt Decal (Symbols Only)	35891200
24.	PTO Danger Label	35809500
25.	Pegged Badge Countax (Countax Yellow)	35932500
26.	Decal `C` Series Badge	35929300
27.	Noise Label Decal 100db – Nov 01	35809701
	Decal 105 Decibel – Nov 01	359497101
28.	Rider Deck Danger Decal	35803300
29.	Decal C300H Honda L/H Side Panel 2003	358028400
	C300H Honda RH Side Panel Decal 2003	358028500
	C300M B&S LH Side Panel Decal 6 Speed	359005000
	C300M B&S RH Side Panel Decal 6 Speed	359004900
	C400H Honda Twin LH Side Panel Decal 03	358027500
	Decal C400H Honda Twin RH Side Panel	358027400
	C600H Honda LH Side Panel Decal	359004600
	C600H Honda RH Side Panel Decal	359004500
	C600HE LH Side Panel Decal 2003	358029500
	C600HE RH Side Panel Decal 2003	358029400

C-SERIES TRACTOR MK3

DECALS
PARTS LIST

	PART DESCRIPTION	PART NUMBER
29.	C800H LH Side Panel Decal 2003	358028000
	C800H RH Side Panel Decal 2003	358028100
	C800HE Honda LH Side Panel Decal	359004800
	C800HE Honda RH Side Panel Decal	359004700
30.	C300H Dial Height Side Panel Decal L/H	358033000
	C300H Dial Height Side Panel Decal R/H	358033100
	C400H Dial Height Side Panel Decal L/H	358033200
	C400H Dial Height Side Panel Decal R/H	358033300
	C600H Dial Height Side Panel Decal L/H	358033400
	C600H Dial Height Side Panel Decal R/H	358033500
	C800H Dial Height Side Panel Decal L/H	358033600
	C800H Dial Height Side Panel Decal R/H	358033700