

# COUNTAX™

## SERVICE BULLETIN

12-08-34

DATE: 12/03/12

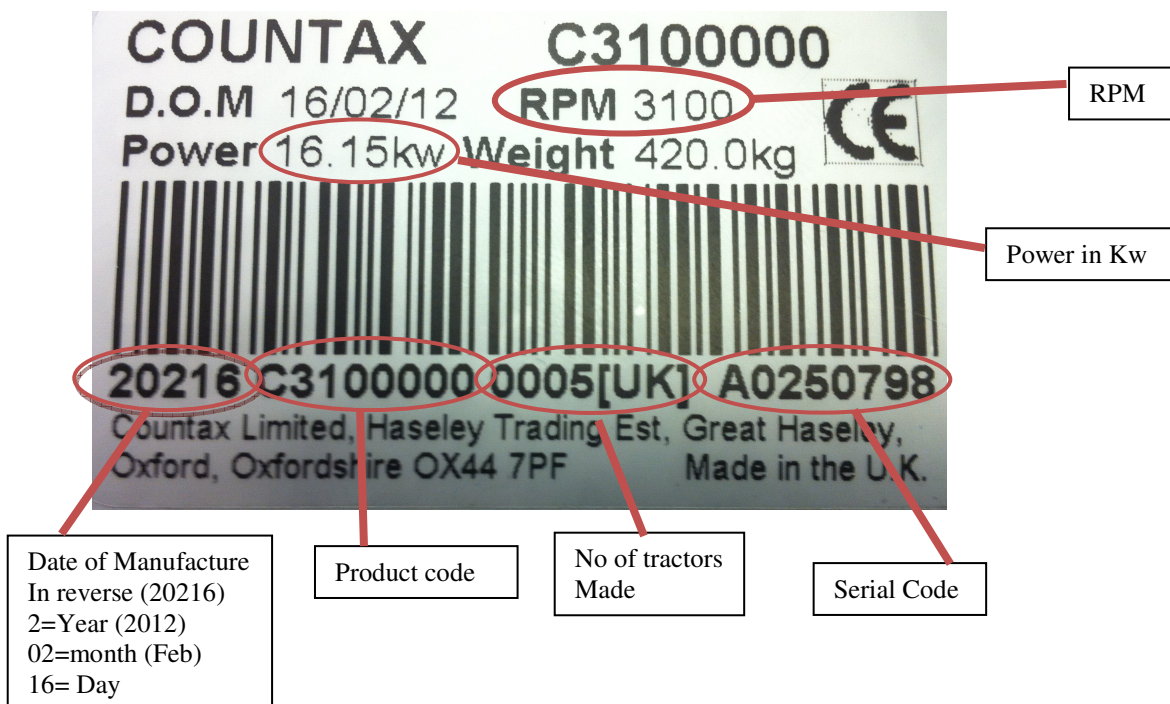
SERIAL No:

MODELS CONCERNED: All Models

Replace all stock in your warehouse & product ☐ Fix as Fail ☐

CONCERN: New serial code structure (2012)

2012-Current



The first 5 digits of the serial number indicates the year of manufacture, the date is printed in reverse digits. The next 8 digits represent the product code of the machine being sold. The next 4 digits are the number of tractor's built. The last 8 digits are the serial number of the tractor which follows a sequential format.

Not only does the product code structure differ from the previous serial codes (see service bulletin 12-08-33), but the RPM has now been added to the label to.

The power of the tractor is still marked but has now been converted from cc to Kw.

1	2	3	4	5	6	7	8
BRAND	SERIES	REGULATORY					
A=Ariens	0=Attachment	1=CE					
C=Countax	1=C&T-Series	2=Non-CE					
G=Gravelly	2=A&V-Series	3=Global					
W=Westwood	3=D-Series	4=Guarding					
E=ECHO	4=X&W Series						
	5=C Series Mini						
2=Deck							
3=PGC							
4=Net							
5=Other Attachment							
6=Service Kit Only							

**Example:** C 1 1 0 0 0 0 0

Note: The last 5 digits are just to make up the product code and follow in a sequential form.



Please contact COUNTAX service department for any further information