

MODEL-TYPE-CODE & SERIAL NUMBER LOCATIONS (CLICK ON YOUR ENGINE TYPE)



SMALL LAWN MOWER ENGINES



RIDE ON LAWN MOWER ENGINES



SMALL UTILITY ENGINES



LARGE COMMERCIAL UTILITY ENGINES



BRIGGS & STRATTON
CORPORATION

For historic engines click here.

YOU.POWERED.



SMALL LAWN MOWER ENGINES (CLICK ON YOUR ENGINE BELOW)



**450E
(OHV)**



**450-550
(L-HEAD)**



**500E-575EX
(OHV)**



**600E - 675EX
(L-HEAD)**



**600EX-675EXi
(OHV)**



**750EX - 775EX
(DOV)**



**INTEK &
INTEK PRO**



**825EX - 875 EXi
(OHV)**



**850EX - 875EX
(OHV pre Oct. 2017)**



BRIGGS & STRATTON
CORPORATION

YOU.POWERED.



RIDE ON LAWN MOWER ENGINES (CLICK ON YOUR ENGINE BELOW)



**SINGLE CYLINDER OHV
3,4 & 5 SERIES. POWERBUILT™, INTEK™ &
PROFFESIONAL SERIES™**



**V-TWIN CYLINDER OHV
7 & 8 SERIES, INTEK™, PROFFESIONAL SERIES™
& COMMERCIAL SERIES™**



**VANGUARD V-TWIN
16 – 23 HP**



**VANGUARD V-TWIN
810cc**



**VANGUARD V-TWIN
BIG BLOCK**



**BRIGGS & STRATTON
CORPORATION**

YOU.POWERED.



SMALL UTILITY ENGINES (CLICK ON YOUR ENGINE BELOW)



RS, CR AND XR / SERIES ENGINES



**INTEK, INTEK-PRO
& POWERBUILT**



**VANGUARD 6.5HP,
8HP & 10HP PRE-2018**



**VANGUARD 6.5HP
AFTER 2018**



VANGUARD 13HP



BRIGGS & STRATTON
CORPORATION

YOU.POWERED.



LARGE COMMERCIAL UTILITY ENGINES

(CLICK ON YOUR ENGINE BELOW)



**VANGUARD V-TWIN
SMALL BLOCK 14-23HP**



**VANGUARD V-TWIN
SMALL BLOCK 14-23HP**



**VANGUARD V-TWIN
BIG BLOCK 27-40HP**



**VANGUARD V-TWIN
BIG BLOCK 27-40HP**



BRIGGS & STRATTON
CORPORATION

YOU.POWERED.



450E - OHV



BRIGGS & STRATTON
CORPORATION

YOU.POWERED.



450 – 550 (L-HEAD)



BRIGGS & STRATTON
CORPORATION

YOU.POWERED.



550 – 575 EX (OHV)



BRIGGS & STRATTON
CORPORATION

YOU.POWERED.



600-675EX (L-HEAD QUANTUM)

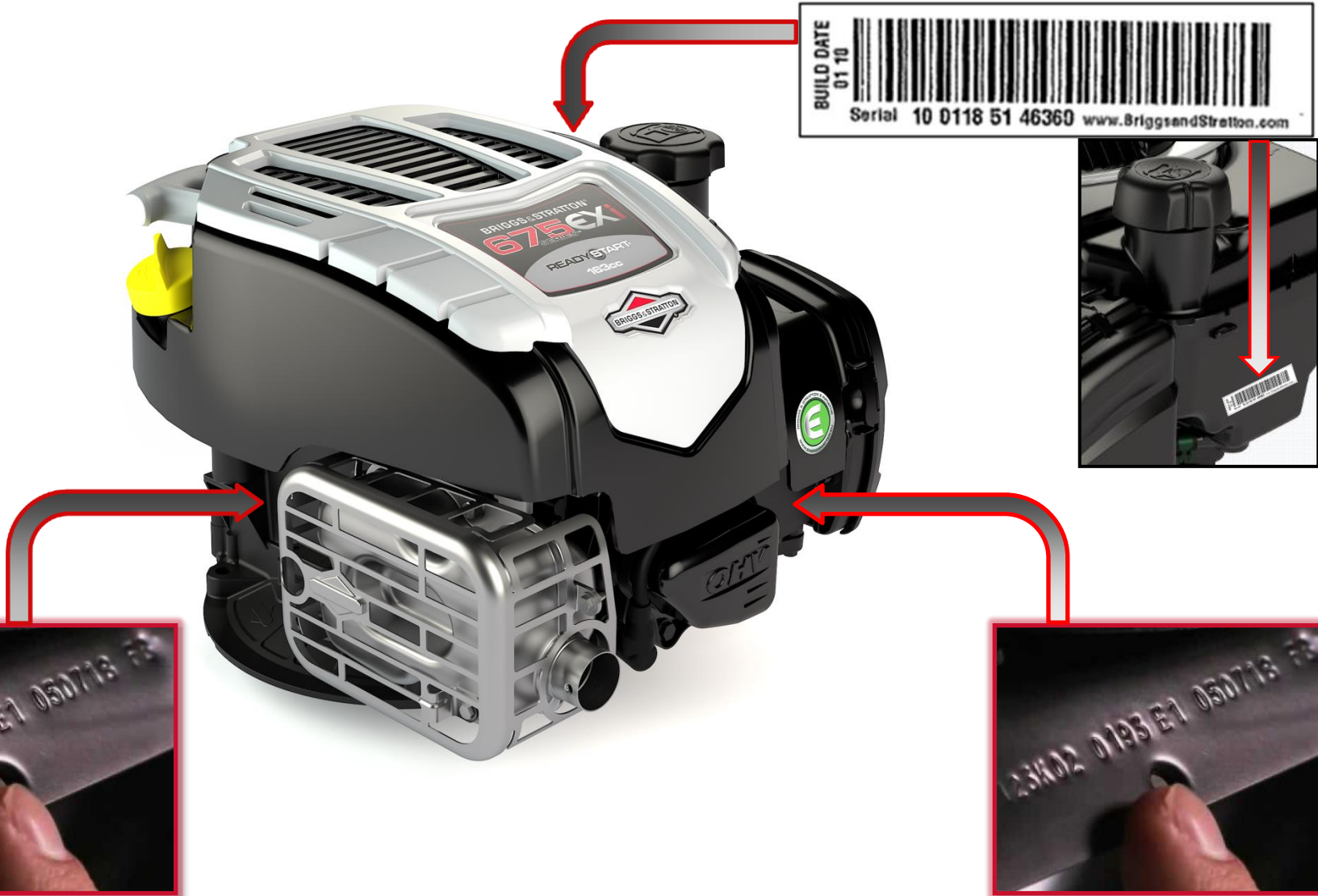


BRIGGS & STRATTON
CORPORATION

YOU.POWERED.



675EXI (OHV)

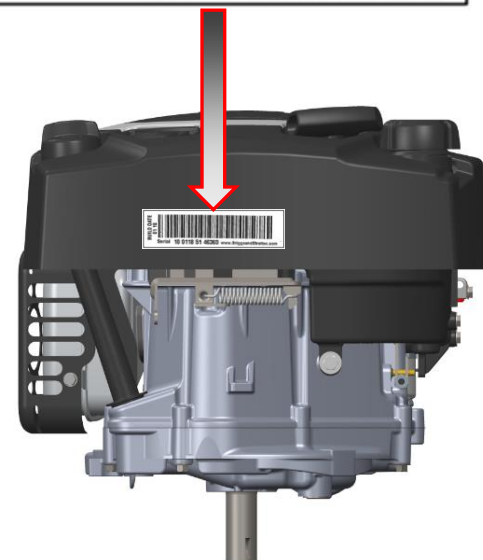


BRIGGS & STRATTON
CORPORATION

YOU.POWERED.



750 – 775EX (DOV)



BRIGGS & STRATTON
CORPORATION

YOU.POWERED.



850 INTEK

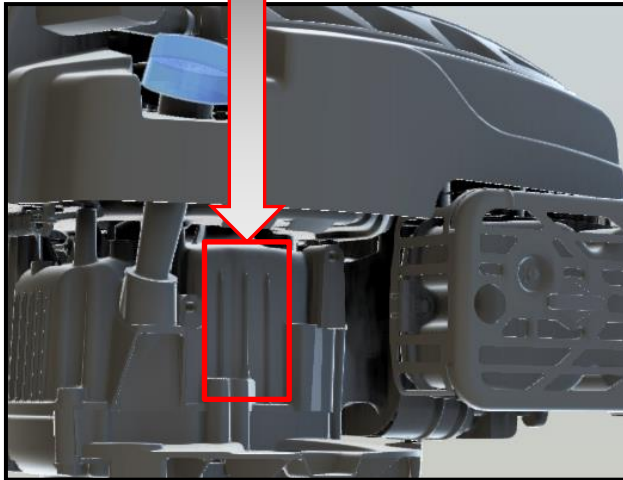


BRIGGS & STRATTON
CORPORATION

YOU.POWERED.



850 – 875EX (NEW, AFTER OCT 17)

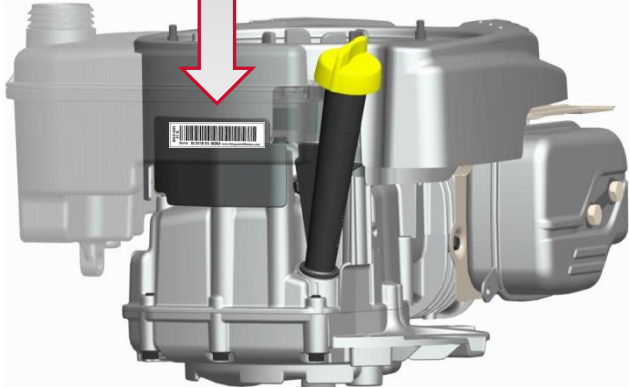


BRIGGS & STRATTON
CORPORATION

YOU.POWERED.

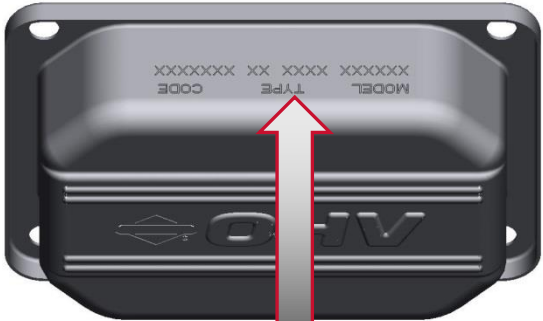


850-875ex (OHV PRE OCT 2017)





SINGLE CYLINDER LARGE VERTICAL ENGINE (OHV)



BRIGGS & STRATTON
CORPORATION

YOU.POWERED.



V-TWIN CYLINDER OHV 7 & 8 SERIES, INTEK™, PROFFESIONAL SERIES™ & COMMERCIAL SERIES™



BRIGGS & STRATTON
CORPORATION

YOU.POWERED.



VANGUARD V-TWIN VERTICAL SHAFT OHV 16 – 23 HP

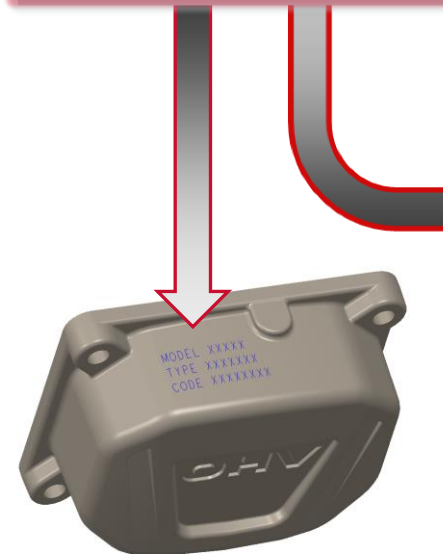


BRIGGS & STRATTON
CORPORATION

YOU.POWERED.



VANGUARD V-TWIN 810cc VERTICAL SHAFT OHV

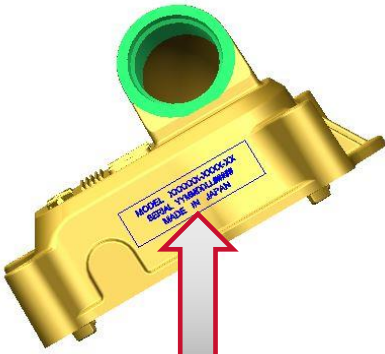


BRIGGS & STRATTON
CORPORATION

YOU.POWERED.



VANGUARD V-TWIN BIG BLOCK 28-40HP

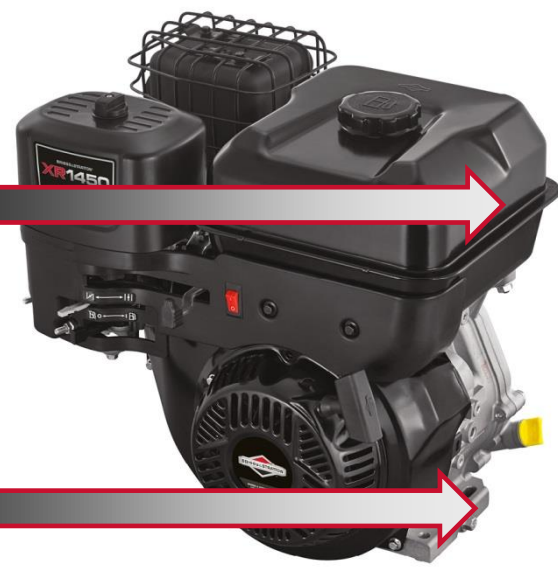


BRIGGS & STRATTON
CORPORATION

YOU.POWERED.



CR 750 & 950, XR550, XR750 XR 950, XR1450 XR2100 & SERIES ENGINES

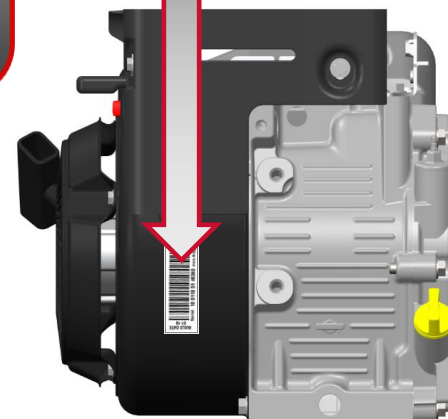


BRIGGS & STRATTON
CORPORATION

YOU.POWERED.



INTEK, INTEK PRO , I/C OHV & POWERBUILT

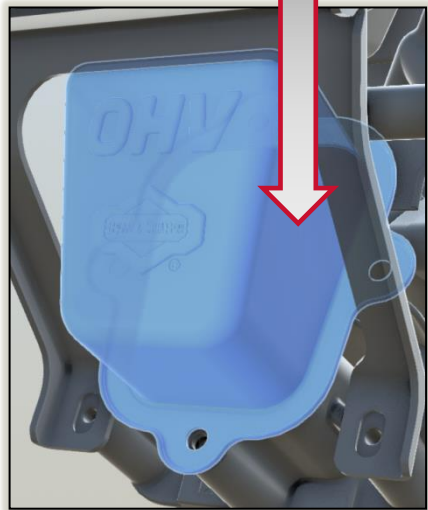
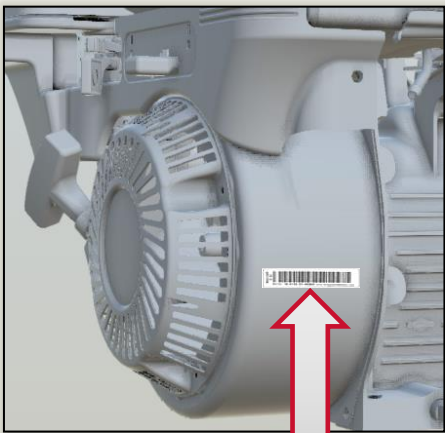


BRIGGS & STRATTON
CORPORATION

YOU.POWERED.



6.5HP, 8 HP & 10HP OHV VANGUARD ENGINES



BRIGGS & STRATTON
CORPORATION

YOU.POWERED.



VANGUARD 6.5HP



BRIGGS & STRATTON
CORPORATION

YOU.POWERED.



VANGUARD 13HP



BRIGGS & STRATTON
CORPORATION

YOU.POWERED.



VANGUARD V-TWIN HORIZONTAL SHAFT SMALL BLOCK

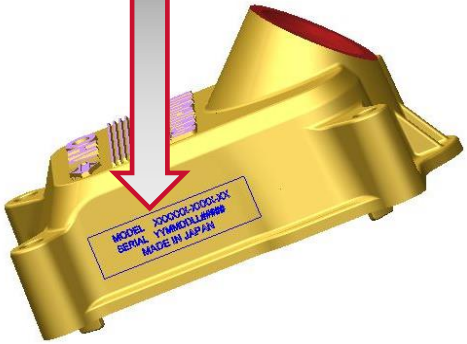


BRIGGS & STRATTON
CORPORATION

YOU.POWERED.



VANGUARD V-TWIN HORIZONTAL SHAFT BIG BLOCK



BRIGGS & STRATTON
CORPORATION

YOU.POWERED.



Help – What are these number for?



Model – Type – Code

Model-type-code is a number that is stamped into every Briggs & Stratton engine. This set of numbers is required to identify spare parts and gather technical information for repair purposes..Eg; Valve Clearances and torque settings. The model-type number outlines engine features and the code provides a date the engine was built.



Model	Type	Code
126L02	1015 - F1	10031856 YYMMDDXX



Some engines do not feature a “code” to show the production date. Instead they display DOM mm dd yyyy as above.



Serial Number

All engines now feature a serial number that is required to process warranty claims after repair. The serial number can be found on a barcode decal.



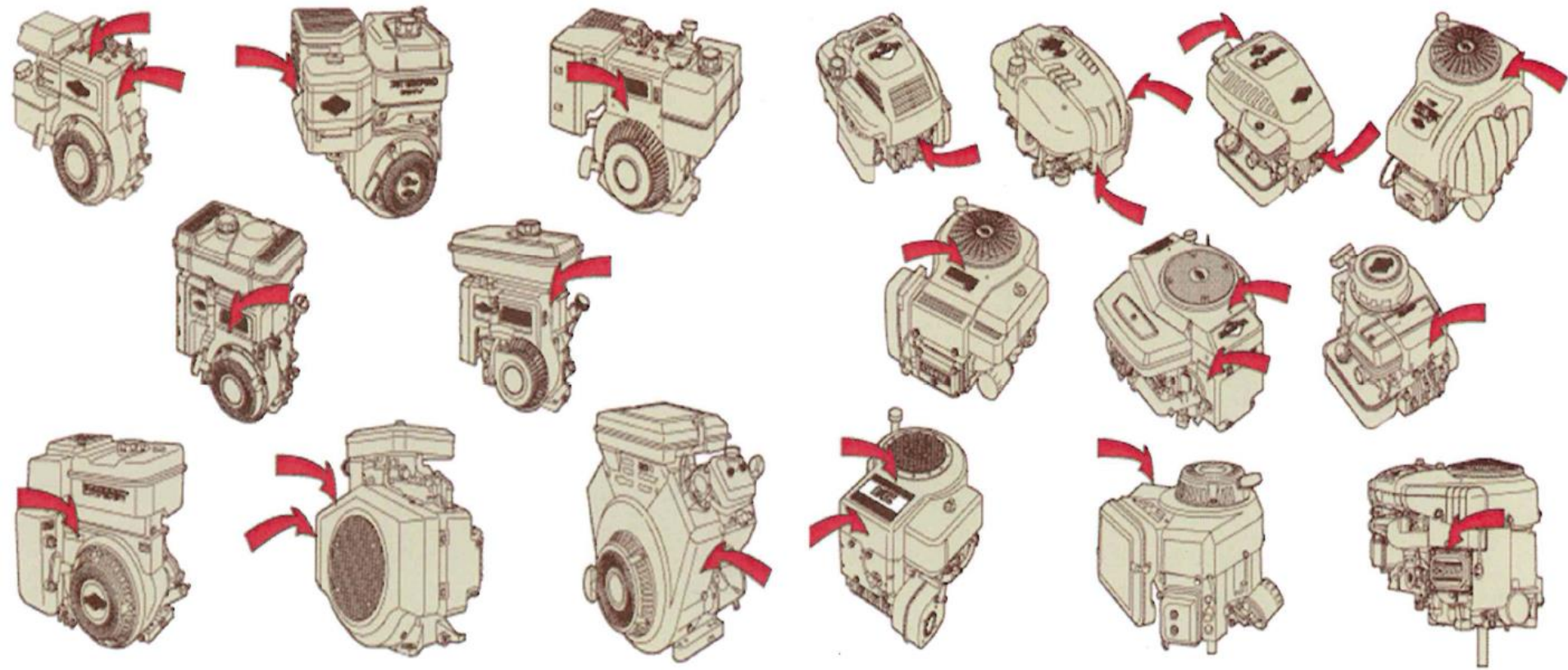
Power Code

Vanguard engines now feature a QR code/ serial number that can be scanned with a smartphone. This number is also required for processing warranty claims after repair. The QR code can be scanned to present engine parts lists, features and operators manuals on www.vanguardengines.com.





Historic Engines



BRIGGS & STRATTON
CORPORATION

YOU. POWERED.